

EXHIBIT A LEGAL DESCRIPTION

1-AB-2021

THAT PORTION OF PARCEL 16, GOLDIE BROWN PINNACLE PEAK RANCH UNIT ONE, ACCORDING TO THE PLAT RECORDED IN BOOK 191 OF MAPS, PAGE 26, RECORDS OF MARICOPA COUNTY, ARIZONA LOCATED IN A PORTION OF THE NORTHEAST QUARTER OF SECTION 11, TOWNSHIP 4 NORTH, RANGE 5 EAST OF THE GILA AND SALT RIVER MERIDIAN, MARICOPA COUNTY, ARIZONA, MORE PARTICULARLY DESCRIBED AS FOLLOWS:

THE NORTH 55.00 FEET, THE EAST 55.00 FEET AND THE WEST 15.00 FEET OF SAID PARCEL 16.

CONTAINING 3.700 ACRES MORE OR LESS.

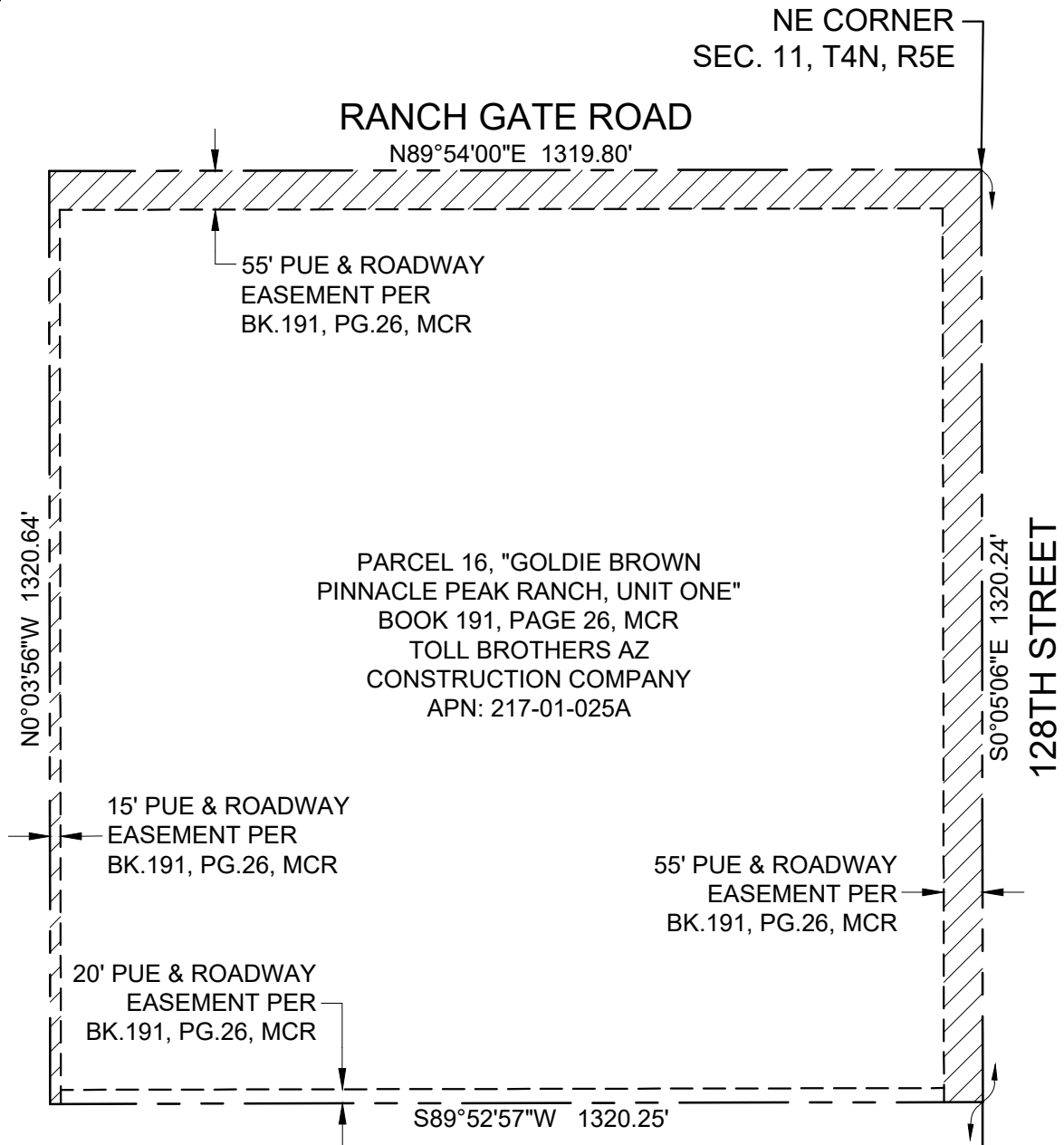
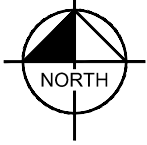


CHAD W. HUBER
RLS 35316
7740 N. 16TH STREET, SUITE 300
PHOENIX, ARIZONA 85020
PH. 602-837-5511
chad.huber@kimley-horn.com

Kimley»Horn					
7740 N. 16TH ST, Suite 300 PHOENIX, AZ 85020			Tel. No. (602) 837-5511		
Scale	Drawn by	Checked by	Date	Project No.	Sheet No.
N/A	CWH	CWH	10/26/2022	291245006	1 OF 2

EXHIBIT B

1-AB-2021



CHAD W. HUBER
 RLS 35316
 7740 N. 16TH STREET, SUITE 300
 PHOENIX, ARIZONA 85020
 PH. 602-837-5511
 chad.huber@kimley-horn.com

E 1/4 CORNER
 SEC. 11 T4N, R5E

Kimley»Horn

7740 N. 16TH ST, Suite 300
 PHOENIX, AZ 85020

Tel. No. (602) 837-5511

Scale	Drawn by	Checked by	Date	Project No.	Sheet No.
N.T.S.	CWH	CWH	10/26/2022	291245006	2 OF 2