

- KEYNOTES**
- 4.1 EXTERIOR STUCCO SYSTEM
  - 4.2 STUCCO PARAPET CAP
  - 4.3 BRICK VENEER
  - 4.4 STONE VENEER
  - 4.5 FOAM / STUCCO POP-OUT WITH SAND FINISH (4')
  - 4.6 WINDOW
  - 4.7 METAL RAILING
  - 4.8 DOOR PER PLAN
  - 4.9 STUCCO CONTROL JOINT
  - 4.11 3'-6" DEEP METAL CANOPY, PAINTED. SEE DETAIL 3 ON SHEET 4.8.
  - 4.12 ALUMINUM STOREFRONT WINDOW SYSTEM
  - 4.13 FIBER CEMENT SIDING
  - 4.14 GATE. SEE DETAILS
  - 4.19 42" RAILING OVER LOW FRAMED WALL
  - 4.23 DECORATIVE COLUMN
  - 4.64 WINDOW SHADE. SEE DETAIL 4 ON SHEET 4.8
  - 4.65 FRAMED MECHANICAL SCREEN WALL WITH STUCCO FINISH
  - 4.67 2'-0" DEEP METAL CANOPY, PAINTED. SEE DETAIL 3 ON SHEET 4.8.
  - 4.68 LIGHT FIXTURE. SEE ELECTRICAL SHEETS E1-E4
  - 4.69 ELECTRICAL METER PANEL SCREEN WALL. SEE SITE PLAN & FIRST FLOOR PLAN FOR LOCATIONS OF METER PANELS

- GENERAL ELEVATION NOTES**
1. ALL ROOF MOUNTED MECHANICAL EQUIPMENT SHALL BE FULLY SCREENED BY PARAPET WALLS EQUAL TO, OR GREATER THAN, THE HIGHEST POINT ON THE MECHANICAL EQUIPMENT.
  2. SOLID MASONRY WALLS AND GATES EQUAL TO, OR GREATER THAN, THE HIGHEST POINT ON THE MECHANICAL EQUIPMENT SHALL SCREEN ALL GROUND MOUNTED MECHANICAL EQUIPMENT.
  3. ANY ROOF ACCESS LADDERS SHALL BE LOCATED INSIDE THE BUILDING. ROOF DRAINAGE SHALL UTILIZE INTERIOR ROOF DRAINS OR BE ARCHITECTURALLY INTEGRATED INTO THE BUILDING DESIGN. ARCHITECTURALLY INTEGRATED FLOOR DRAINS SHALL REQUIRE ADDITIONAL ARTICULATION BEYOND PAINT ACCENTS. SECTION 35-1902 (B)(e) (15), ZONING CODE.
  4. SCREENING SHALL BE ARCHITECTURALLY INTEGRATED FOR THE SERVICE ENTRANCE SECTION (SES) AND ALL UTILITIES. ALL GROUND MOUNTED EQUIPMENT SHALL BE SCREENED FROM PUBLIC VIEW BY A CONCRETE OR MASONRY WALL WITH SOLID GATES, EQUAL TO OR GREATER IN HEIGHT THAN THE MECHANICAL EQUIPMENT. SECTION 35-1902 (B) (e)13, ZONING CODE.
  5. SIGNS REQUIRE A SEPARATE SUBMITTAL AND PERMIT.
  6. ALL ROOF EQUIPMENT, HVAC, TRASH CHUTE AND ANY ELEVATOR VENTS, ETC. ARE TO BE BELOW THE LOWEST BUILDING PARAPET ELEVATION.
  7. ALL ROOF DRAINAGE (SYSTEM) IS INTERNAL TO THE BUILDING.
  8. SES IS WITHIN AN INTERNAL ELECTRICAL ROOM.

**EXTERIOR COLOR SCHEME**

EXTERIOR FINISH SCHEDULE		
LOCATION	MFG. / PAINT	COLOR
A	PAINT	SHERWIN WILLIAMS DUNN EDWARDS DE 6247 "GARDEN PEBBLE" LRV 71
B	PAINT	DUNN EDWARDS DE6255 "WISHING WELL" LRV 58
C	PAINT	DUNN EDWARDS DE6313 "ENCHANTED EYE" LRV 21
D	PAINTED METALS & RAILINGS	DUNN EDWARDS DEA187 "BLACK" LRV 3
D1	BALCONY RAIL	MCNICHOLS - METAL MESH SQUARE 2" X 2"
E2	METAL SHADE CANOPY	MCNICHOLS PERFORATED METAL - 23% OPEN AREA
D	FIBER CEMENT LAP SIDING	DUNN EDWARDS DET681 "MODERNE CLASS" LRV 11
F	STONE VENEER	CORONADO OLD WORLD LEDGE ANTIQUE CREAM
G	THIN BRICK VENEER	SUMMIT FACE BRICK, 702 TBL CONCORD
H	WINDOW FRAME	CLEAR ANODIZED ALUM. SILVER METALIC



1 EAST OVERALL - COLOR  
3/64" = 1'-0"



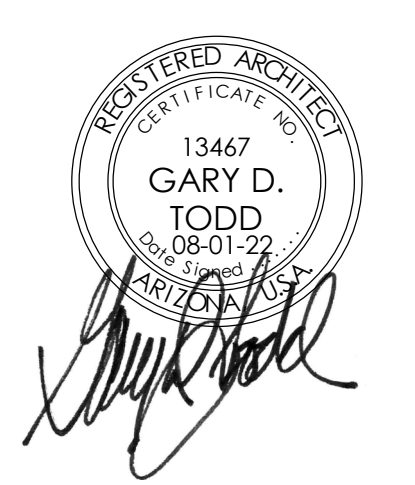
2 EAST A - COLOR  
3/32" = 1'-0"

**TODD+ ASSOCIATES**  
602-952-8280 / TODDASSOC.COM  
21-2031-00



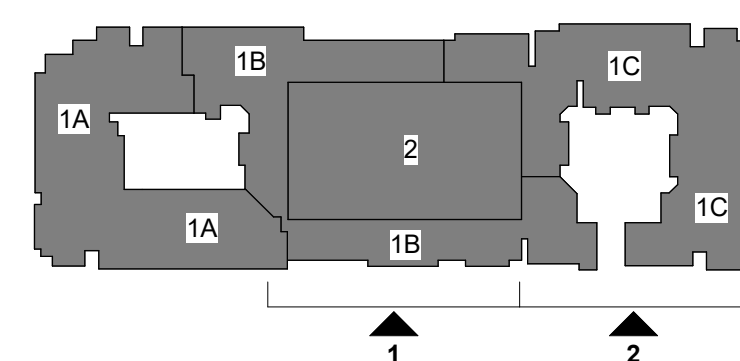
**BELLA ALBA**  
1000 N. SCOTTSDALE RD SCOTTSDALE, ARIZONA  
DRB 3RD SUBMITTAL  
08-01-22

EXTERIOR ELEVATIONS



**4.1C**

KEYMAP



KEYNOTES

- 4.1 EXTERIOR STUCCO SYSTEM
- 4.2 STUCCO PARAPET CAP
- 4.3 BRICK VENEER
- 4.4 STONE VENEER
- 4.5 FOAM / STUCCO POP-UP WITH SAND FINISH (4")
- 4.6 WINDOW
- 4.7 METAL RAILING
- 4.8 DOOR PER PLAN
- 4.9 STUCCO CONTROL JOINT
- 4.11 3'-6" DEEP METAL CANOPY, PAINTED, SEE DETAIL 3 ON SHEET 4.8.
- 4.13 FIBER CEMENT SIDING
- 4.16 GATE, SEE DETAILS
- 4.18 FRAMED PATIO / BALCONY
- 4.19 42" RAILING OVER LOW FRAMED WALL
- 4.65 FRAMED MECHANICAL SCREEN WALL WITH STUCCO FINISH
- 4.67 2'-0" DEEP METAL CANOPY, PAINTED, SEE DETAIL 3 ON SHEET 4.8.
- 4.68 LIGHT FIXTURE, SEE ELECTRICAL SHEETS E1-E4
- 4.69 ELECTRICAL METER PANEL SCREEN WALL, SEE SITE PLAN & FIRST FLOOR PLAN FOR LOCATIONS OF METER PANELS

GENERAL ELEVATION NOTES

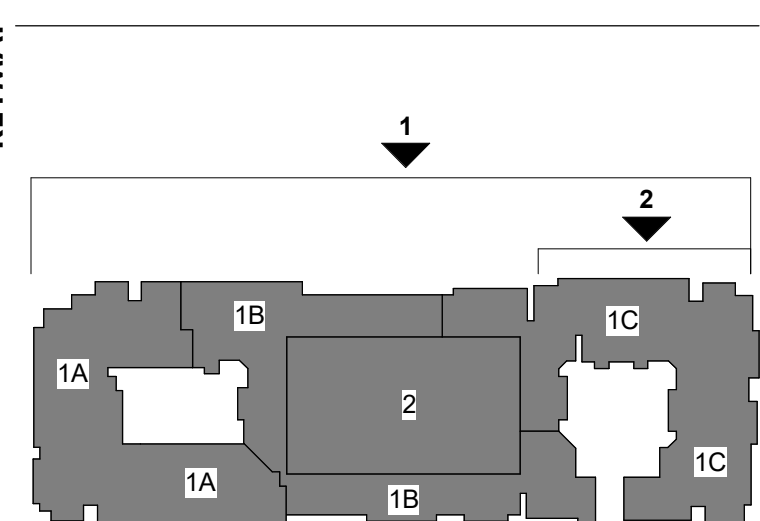
- 1. ALL ROOF MOUNTED MECHANICAL EQUIPMENT SHALL BE FULLY SCREENED BY PARAPET WALLS EQUAL TO, OR GREATER THAN, THE HIGHEST POINT ON THE MECHANICAL EQUIPMENT.
- 2. SOLID MASONRY WALLS AND GATES EQUAL TO, OR GREATER THAN, THE HIGHEST POINT ON THE MECHANICAL EQUIPMENT SHALL SCREEN ALL GROUND MOUNTED MECHANICAL EQUIPMENT.
- 3. ANY ROOF ACCESS LADDERS SHALL BE LOCATED INSIDE THE BUILDING. ROOF DRAINAGE SHALL UTILIZE INTERIOR ROOF DRAINS OR BE ARCHITECTURALLY INTEGRATED INTO THE BUILDING DESIGN. ARCHITECTURALLY INTEGRATED FLOOR DRAINS SHALL REQUIRE ADDITIONAL ARTICULATION BEYOND PAINT ACCENTS, SECTION 35-1902 (8)(e) (15), ZONING CODE.
- 4. SCREENING SHALL BE ARCHITECTURALLY INTEGRATED FOR THE SERVICE ENTRANCE SECTION (SES) AND ALL UTILITIES. ALL GROUND MOUNTED EQUIPMENT SHALL BE SCREENED FROM PUBLIC VIEW BY A CONCRETE OR MASONRY WALL WITH SOLID GATES, EQUAL TO OR GREATER IN HEIGHT THAN THE MECHANICAL EQUIPMENT, SECTION 35-1902 (8) (e)13, ZONING CODE.
- 5. SIGNS REQUIRE A SEPARATE SUBMITTAL AND PERMIT.
- 6. ALL ROOF EQUIPMENT, HVAC, TRASH CHUTE AND ANY ELEVATOR VENTS, ETC. ARE TO BE BELOW THE LOWEST BUILDING PARAPET ELEVATION.
- 7. ALL ROOF DRAINAGE (SYSTEM) IS INTERNAL TO THE BUILDING.
- 8. SES IS WITHIN AN INTERNAL ELECTRICAL ROOM.

EXTERIOR COLOR SCHEME

EXTERIOR FINISH SCHEDULE			
	LOCATION	MFG. / PAINT	COLOR
A	PAINT	SHERWIN WILLIAMS	DE 6247 "GARDEN PEBBLE" LRV 71
B	PAINT	DUNN EDWARDS	DE6255 "WISHING WELL" LRV 58
C	PAINT	DUNN EDWARDS	DE6313 "ENCHANTED EVE" LRV 21
D	PAINTED METALS & RAILINGS	DUNN EDWARDS	DEA187 "BLACK" LRV 3
D1	BALCONY RAIL	MCNICHOLS - METAL MESH	SQUARE 2" X 2"
D2	METAL SHADE CANOPY	MCNICHOLS	PERFORATED METAL - 23% OPEN AREA
E	FIBER CEMENT LAP SIDING	DUNN EDWARDS	DET681 "MODERNE CLASS" LRV 11
F	STONE VENEER	CORONADO	OLD WORLD LEDGE ANTIQUE CREAM
G	THIN BRICK VENEER	SUMMIT	FACE BRICK, 702 TBL CONCORDE
H	WINDOW FRAME	CLEAR ANODIZED ALUM.	SILVER METALIC



KEYMAP



KEYNOTES

- 4.1 EXTERIOR STUCCO SYSTEM
- 4.5 FOAM / STUCCO POP-OUT WITH SAND FINISH (4')
- 4.6 WINDOW
- 4.7 METAL RAILING
- 4.8 DOOR PER PLAN
- 4.9 STUCCO CONTROL JOINT
- 4.11 3'-6" DEEP CANOPY, PAINTED, SEE DETAIL 3 ON SHEET 4.8.
- 4.18 FRAMED PATIO / BALCONY
- 4.65 FRAMED MECHANICAL SCREEN WALL WITH STUCCO FINISH
- 4.67 2'-0" DEEP METAL CANOPY, PAINTED, SEE DETAIL 3 ON SHEET 4.8.
- 4.68 LIGHT FIXTURE, SEE ELECTRICAL SHEETS E1-E4

GENERAL ELEVATION NOTES

1. ALL ROOF MOUNTED MECHANICAL EQUIPMENT SHALL BE FULLY SCREENED BY PARAPET WALLS EQUAL TO, OR GREATER THAN, THE HIGHEST POINT ON THE MECHANICAL EQUIPMENT.
2. SOLID MASONRY WALLS AND GATES EQUAL TO, OR GREATER THAN, THE HIGHEST POINT ON THE MECHANICAL EQUIPMENT SHALL SCREEN ALL GROUND MOUNTED MECHANICAL EQUIPMENT.
3. ANY ROOF ACCESS LADDERS SHALL BE LOCATED INSIDE THE BUILDING. ROOF DRAINAGE SHALL UTILIZE INTERIOR ROOF DRAINS OR BE ARCHITECTURALLY INTEGRATED INTO THE BUILDING DESIGN. ARCHITECTURALLY INTEGRATED FLOOR DRAINS SHALL REQUIRE ADDITIONAL ARTICULATION BEYOND PAINT ACCENTS. SECTION 35-1902 (B)(e) (15), ZONING CODE.
4. SCREENING SHALL BE ARCHITECTURALLY INTEGRATED FOR THE SERVICE ENTRANCE SECTION (SES) AND ALL UTILITIES. ALL GROUND MOUNTED EQUIPMENT SHALL BE SCREENED FROM PUBLIC VIEW BY A CONCRETE OR MASONRY WALL WITH SOLID GATES, EQUAL TO OR GREATER IN HEIGHT THAN THE MECHANICAL EQUIPMENT. SECTION 35-1902 (B) (e)13, ZONING CODE.
5. SIGNS REQUIRE A SEPARATE SUBMITTAL AND PERMIT.
6. ALL ROOF EQUIPMENT, HVAC, TRASH CHUTE AND ANY ELEVATOR VENTS, ETC. ARE TO BE BELOW THE LOWEST BUILDING PARAPET ELEVATION.
7. ALL ROOF DRAINAGE (SYSTEM) IS INTERNAL TO THE BUILDING.
8. SES IS WITHIN AN INTERNAL ELECTRICAL ROOM.

EXTERIOR COLOR SCHEME

EXTERIOR FINISH SCHEDULE			
	LOCATION	MFG. / PAINT	COLOR
		SHERWIN WILLIAMS	
A	PAINT	DUNN EDWARDS	DE 6247 "GARDEN PEBBLE" LRV 71
B	PAINT	DUNN EDWARDS	DE6255 "WISHING WELL" LRV 58
C	PAINT	DUNN EDWARDS	DE6313 "ENCHANTED EVE" LRV 21
D	PAINTED METALS & RAILINGS	DUNN EDWARDS	DEA187 "BLACK" LRV 3
D1	BALCONY RAIL	MCNICHOLS - METAL MESH	SQUARE 2" X 2"
D2	METAL SHADE CANOPY	MCNICHOLS	PERFORATED METAL - 23% OPEN AREA
E	FIBER CEMENT LAP SIDING	DUNN EDWARDS	DEJ681 "MODERNE CLASS" LRV 11
F	STONE VENEER	CORONADO	OLD WORLD LEDGE ANTIQUE CREAM
G	THIN BRICK VENEER	SUMMIT	FACE BRICK, 702 TBL CONCORDE
H	WINDOW FRAME	CLEAR ANODIZED ALUM.	SILVER METALIC



1 WEST OVERALL - COLOR  
3/64" = 1'-0"

- T.O. ELEVATOR 2 54'-5"
- T.O. ROOF 47'-10"
- T.O. PARAPET 2 46'-10"
- T.O. PARAPET 1 45'-4"
- T.O. PLATE 41'-3"
- BALCONY PARAPET 35'-10 3/8"
- LEVEL 4 32'-2 3/8"
- LEVEL 3 21'-5 3/4"
- LEVEL 2 10'-9 1/8"
- LEVEL 1 (1228.5) 0'-0"
- LEVEL 1 - STEP 1 (1228.0) -0'-6"
- LEVEL 1 - STEP 2 (1227.0) -1'-0"



2 WEST A - COLOR  
3/32" = 1'-0"

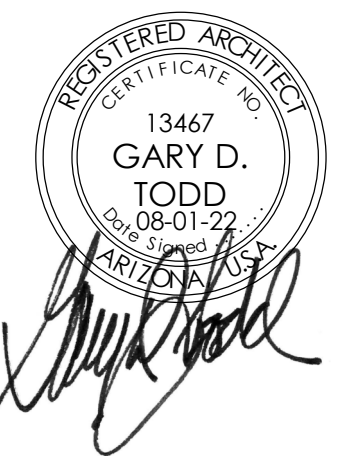
- T.O. ROOF 47'-10"
  - T.O. PARAPET 2 46'-10"
  - T.O. PARAPET 1 45'-4"
  - T.O. PLATE 41'-3"
  - BALCONY PARAPET 35'-10 3/8"
  - LEVEL 4 32'-2 3/8"
  - LEVEL 3 21'-5 3/4"
  - LEVEL 2 10'-9 1/8"
  - LEVEL 1 (1228.5) 0'-0"
  - (1225.5)
- ELEVATION ESTABLISHED 12 INCHES ABOVE THE AVERAGE ELEVATION AT THE TOP OF THE CURB OF THE STREET

**TODD+ ASSOCIATES**  
602-952-8280 / TODDASSOC.COM  
21-2031-00



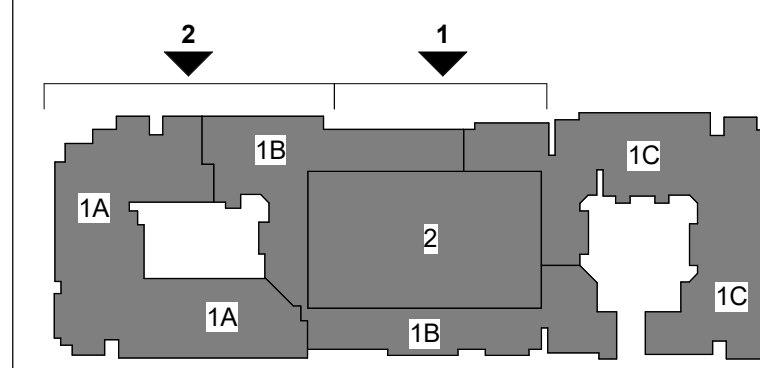
**BELLA ALBA**  
1000 N. SCOTTSDALE RD SCOTTSDALE, ARIZONA  
DRB 3RD SUBMITTAL  
08-01-22

EXTERIOR ELEVATIONS



4.3C

KEYMAP



KEYNOTES

- 4.1 EXTERIOR STUCCO SYSTEM
- 4.2 STUCCO PARAPET CAP
- 4.3 BRICK VENEER
- 4.4 STONE VENEER
- 4.5 FOAM / STUCCO POP-OUT WITH SAND FINISH (4")
- 4.6 WINDOW
- 4.7 METAL RAILING
- 4.8 DOOR PER PLAN
- 4.9 STUCCO CONTROL JOINT
- 4.11 3'-6" DEEP METAL CANOPY, PAINTED, SEE DETAIL 3 ON SHEET 4.8.
- 4.12 ALUMINUM STOREFRONT WINDOW SYSTEM
- 4.13 FIBER CEMENT SIDING
- 4.17 COIL-OVER DOOR
- 4.18 FRAMED PATIO / BALCONY
- 4.22 RECESSED STUCCO
- 4.67 2'-0" DEEP METAL CANOPY, PAINTED, SEE DETAIL 3 ON SHEET 4.8.
- 4.68 LIGHT FIXTURE, SEE ELECTRICAL SHEETS E1-E4
- 4.69 ELECTRICAL METER PANEL SCREEN WALL, SEE SITE PLAN & FIRST FLOOR PLAN FOR LOCATIONS OF METER PANELS

GENERAL ELEVATION NOTES

1. ALL ROOF MOUNTED MECHANICAL, EQUIPMENT SHALL BE FULLY SCREENED BY PARAPET WALLS EQUAL TO, OR GREATER THAN, THE HIGHEST POINT ON THE MECHANICAL EQUIPMENT.
2. SOLID MASONRY WALLS AND GATES EQUAL TO, OR GREATER THAN, THE HIGHEST POINT ON THE MECHANICAL EQUIPMENT SHALL SCREEN ALL GROUND MOUNTED MECHANICAL EQUIPMENT.
3. ANY ROOF ACCESS LADDERS SHALL BE LOCATED INSIDE THE BUILDING. ROOF DRAINAGE SHALL UTILIZE INTERIOR ROOF DRAINS OR BE ARCHITECTURALLY INTEGRATED INTO THE BUILDING DESIGN. ARCHITECTURALLY INTEGRATED FLOOR DRAINS SHALL REQUIRE ADDITIONAL ARTICULATION BEYOND PAINT ACCENTS, SECTION 35-1902 (8)(e) (15), ZONING CODE.
4. SCREENING SHALL BE ARCHITECTURALLY INTEGRATED FOR THE SERVICE ENTRANCE SECTION (SES) AND ALL UTILITIES. ALL GROUND MOUNTED EQUIPMENT SHALL BE SCREENED FROM PUBLIC VIEW BY A CONCRETE OR MASONRY WALL WITH SOLID GATES, EQUAL TO OR GREATER IN HEIGHT THAN THE MECHANICAL EQUIPMENT, SECTION 35-1902 (8) (e)13, ZONING CODE.
5. SIGNS REQUIRE A SEPARATE SUBMITTAL AND PERMIT.
6. ALL ROOF EQUIPMENT, HVAC, TRASH CHUTE AND ANY ELEVATOR VENTS, ETC. ARE TO BE BELOW THE LOWEST BUILDING PARAPET ELEVATION.
7. ALL ROOF DRAINAGE (SYSTEM) IS INTERNAL TO THE BUILDING.
8. SES IS WITHIN AN INTERNAL ELECTRICAL ROOM.

EXTERIOR COLOR SCHEME

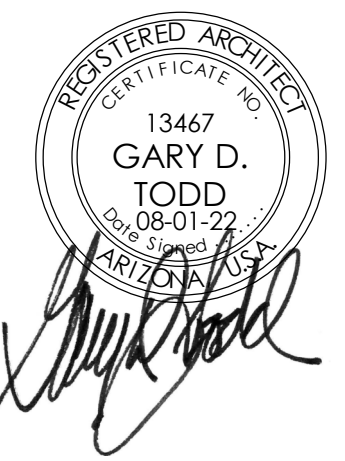
EXTERIOR FINISH SCHEDULE			
	LOCATION	MFG. / PAINT	COLOR
		SHERWIN WILLIAMS	
A	PAINT	DUNN EDWARDS	DE 6247 "GARDEN PEBBLE" LRV 71
B	PAINT	DUNN EDWARDS	DE6255 "WISHING WELL" LRV 58
C	PAINT	DUNN EDWARDS	DE6313 "ENCHANTED EVE" LRV 21
D	PAINTED METALS & RAILINGS	DUNN EDWARDS	DEA187 "BLACK" LRV 3
D1	BALCONY RAIL	MCNICHOLS - METAL MESH	SQUARE 2" X 2"
D2	METAL SHADE CANOPY	MCNICHOLS	PERFORATED METAL - 23% OPEN AREA
E	FIBER CEMENT LAP SIDING	DUNN EDWARDS	DE1681 "MODERNE CLASS" LRV 11
F	STONE VENEER	CORONADO	OLD WORLD LEDGE ANTIQUE CREAM
G	THIN BRICK VENEER	SUMMIT	FACE BRICK, 702 TBL CONCORDE
H	WINDOW FRAME	CLEAR ANODIZED ALUM.	SILVER METALIC



1 WEST B - COLOR  
3/32" = 1'-0"



2 WEST C - COLOR  
3/32" = 1'-0"



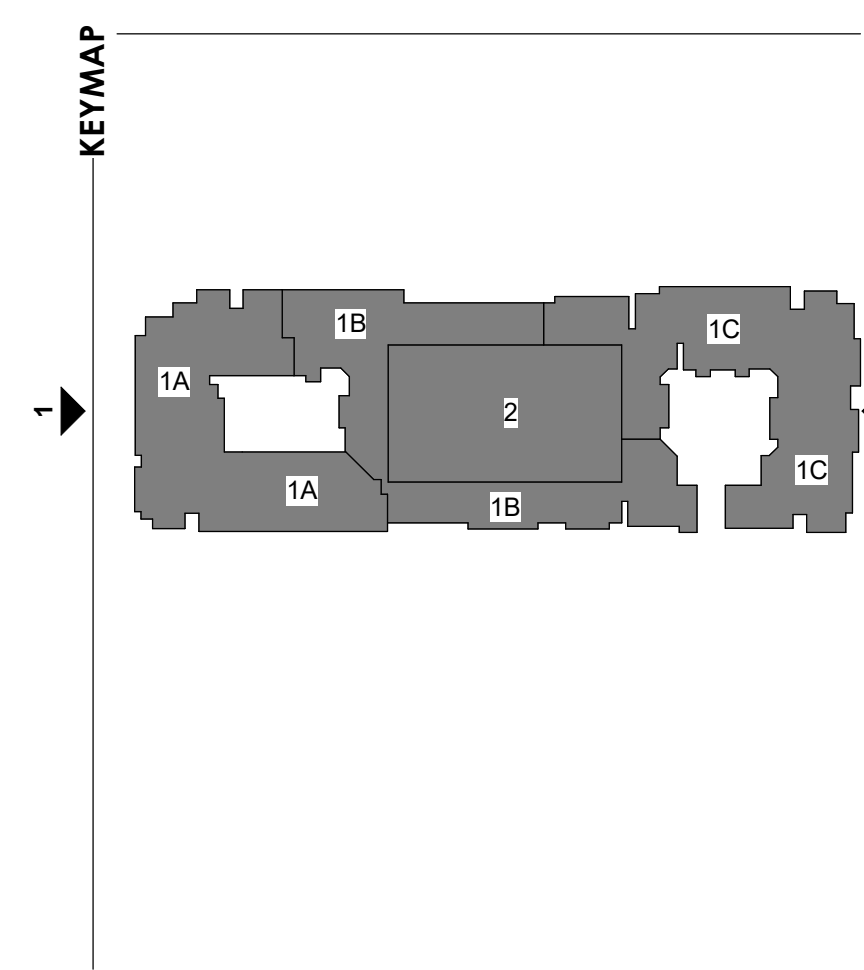
**TODD+**  
**ASSOCIATES**  
602-952-8280 / TODDASSOC.COM  
21-2031-00



**BELLA ALBA**  
1000 N. SCOTTSDALE RD SCOTTSDALE, ARIZONA  
DRB 3RD SUBMITTAL  
08-01-22

EXTERIOR ELEVATIONS

**4.4C**



- KEYNOTES**
- 4.1 EXTERIOR STUCCO SYSTEM
  - 4.2 STUCCO PARAPET CAP
  - 4.3 BRICK VENEER
  - 4.4 STONE VENEER
  - 4.5 FOAM / STUCCO POP-OUT WITH SAND FINISH (4")
  - 4.6 WINDOW
  - 4.7 METAL RAILING
  - 4.8 DOOR PER PLAN
  - 4.9 STUCCO CONTROL JOINT
  - 4.11 3'-6" DEEP METAL CANOPY, PAINTED, SEE DETAIL 3 ON SHEET 4.8.
  - 4.12 ALUMINUM STOREFRONT WINDOW SYSTEM
  - 4.13 FIBER CEMENT SIDING
  - 4.18 FRAMED PATIO / BALCONY
  - 4.19 42" RAILING OVER LOW FRAMED WALL
  - 4.23 DECORATIVE COLUMN
  - 4.65 FRAMED MECHANICAL SCREEN WALL WITH STUCCO FINISH
  - 4.67 2'-0" DEEP METAL CANOPY, PAINTED, SEE DETAIL 3 ON SHEET 4.8.
  - 4.68 LIGHT FIXTURE, SEE ELECTRICAL SHEETS E1-E4

- GENERAL ELEVATION NOTES**
1. ALL ROOF MOUNTED MECHANICAL EQUIPMENT SHALL BE FULLY SCREENED BY PARAPET WALLS EQUAL TO, OR GREATER THAN, THE HIGHEST POINT ON THE MECHANICAL EQUIPMENT.
  2. SOLID MASONRY WALLS AND GATES EQUAL TO, OR GREATER THAN, THE HIGHEST POINT ON THE MECHANICAL EQUIPMENT SHALL SCREEN ALL GROUND MOUNTED MECHANICAL EQUIPMENT.
  3. ANY ROOF ACCESS LADDERS SHALL BE LOCATED INSIDE THE BUILDING. ROOF DRAINAGE SHALL UTILIZE INTERIOR ROOF DRAINS OR BE ARCHITECTURALLY INTEGRATED INTO THE BUILDING DESIGN. ARCHITECTURALLY INTEGRATED FLOOR DRAINS SHALL REQUIRE ADDITIONAL ARTICULATION BEYOND PAINT ACCENTS, SECTION 35-1902 (B)(e) (15) ZONING CODE.
  4. SCREENING SHALL BE ARCHITECTURALLY INTEGRATED FOR THE SERVICE ENTRANCE SECTION (SES) AND ALL UTILITIES. ALL GROUND MOUNTED EQUIPMENT SHALL BE SCREENED FROM PUBLIC VIEW BY A CONCRETE OR MASONRY WALL WITH SOLID GATES, EQUAL TO OR GREATER IN HEIGHT THAN THE MECHANICAL EQUIPMENT, SECTION 35-1902 (B) (e)13, ZONING CODE.
  5. SIGNS REQUIRE A SEPARATE SUBMITTAL AND PERMIT.
  6. ALL ROOF EQUIPMENT, HVAC, TRASH CHUTE AND ANY ELEVATOR VENTS, ETC. ARE TO BE BELOW THE LOWEST BUILDING PARAPET ELEVATION.
  7. ALL ROOF DRAINAGE (SYSTEM) IS INTERNAL TO THE BUILDING.
  8. SES IS WITHIN AN INTERNAL ELECTRICAL ROOM.

**EXTERIOR COLOR SCHEME**

LOCATION	MFG. / PAINT	COLOR
A PAINT	SHERWIN WILLIAMS	DE 6247 "GARDEN PEBBLE" LRV 71
B PAINT	DUNN EDWARDS	DE6255 "WISHING WELL" LRV 58
C PAINT	DUNN EDWARDS	DE6313 "ENCHANTED EVE" LRV 21
D PAINTED METALS & RAILINGS	DUNN EDWARDS	DEA187 "BLACK" LRV 3
D1 BALCONY RAIL	MCNICHOLS - METAL MESH	SQUARE 2" X 2"
D2 METAL SHADE CANOPY	MCNICHOLS	PERFORATED METAL - 23% OPEN AREA
E FIBER CEMENT LAP SIDING	DUNN EDWARDS	DET681 "MODERNE CLASS" LRV 11
F STONE VENEER	CORONADO	OLD WORLD LEDGE ANTIQUE CREAM
G THIN BRICK VENEER	SUMMIT	FACE BRICK, 702 TBL CONCORDE
H WINDOW FRAME	CLEAR ANODIZED ALUM.	SILVER METALIC



1 SOUTH - COLOR  
3/32" = 1'-0"



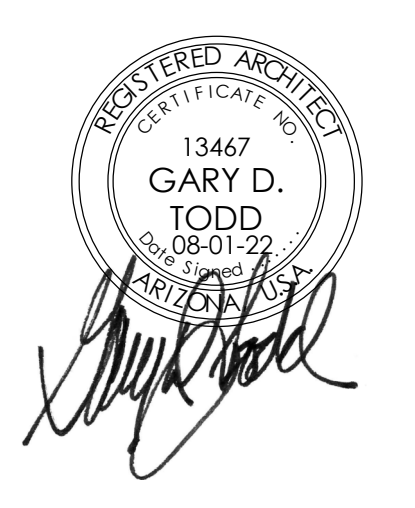
2 NORTH - COLOR  
3/32" = 1'-0"

**TODD+ ASSOCIATES**  
602-952-8280 / TODDASSOC.COM  
21-2031-00



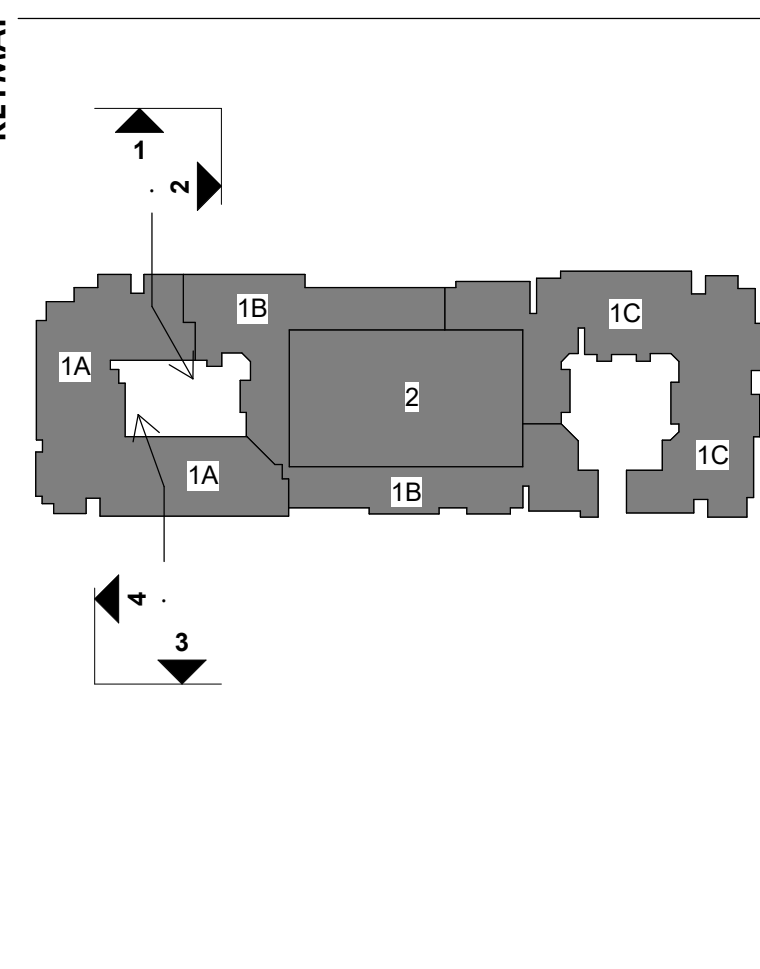
**BELLA ALBA**  
1000 N. SCOTTSDALE RD SCOTTSDALE, ARIZONA  
DRB 3RD SUBMITTAL  
08-01-22

EXTERIOR ELEVATIONS



**4.5C**

KEYMAP



KEYNOTES

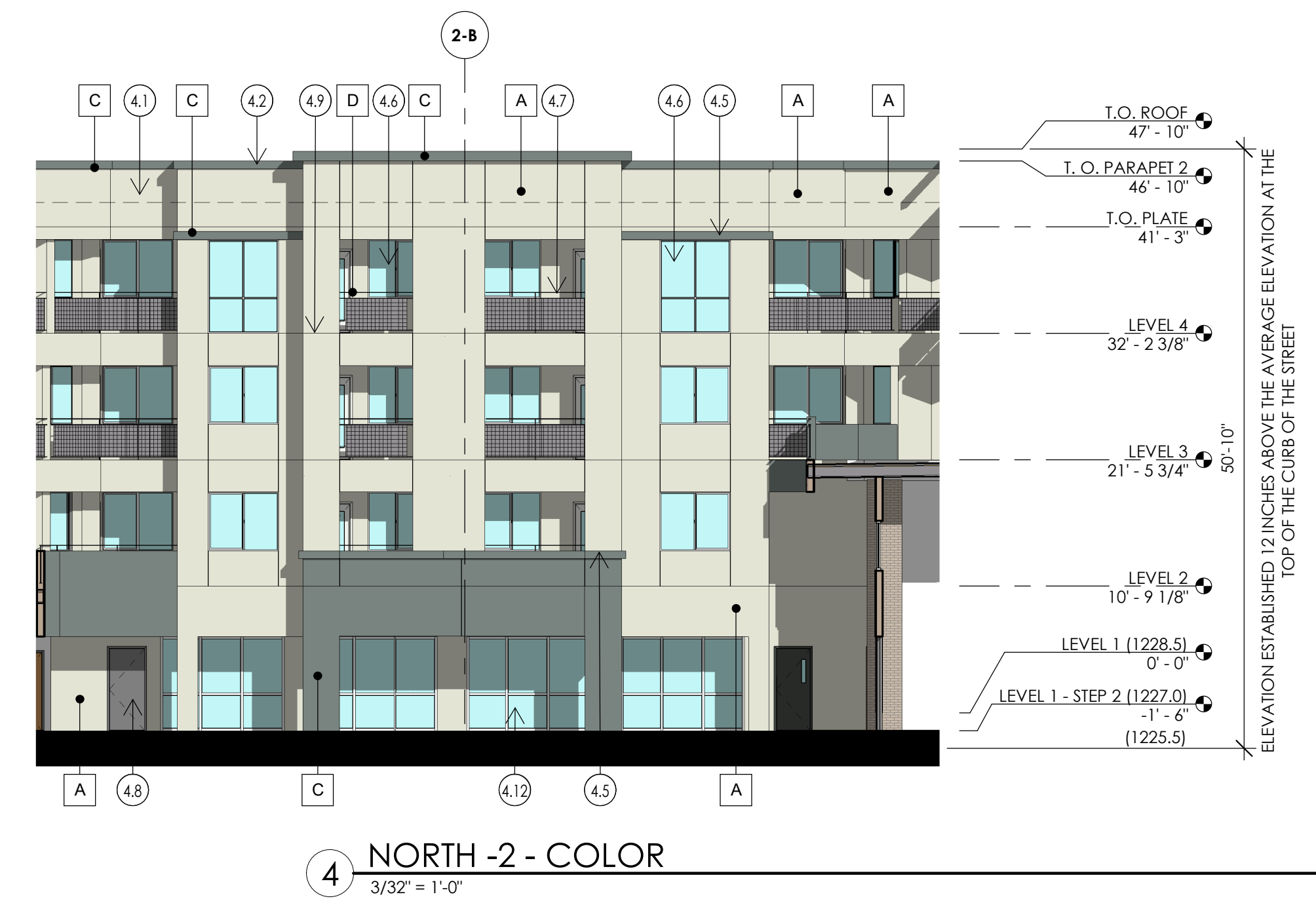
- 4.1 EXTERIOR STUCCO SYSTEM
- 4.2 STUCCO PARAPET CAP
- 4.5 FOAM / STUCCO POP-OUT WITH SAND FINISH (4')
- 4.6 WINDOW
- 4.7 METAL RAILING
- 4.8 DOOR PER PLAN
- 4.9 STUCCO CONTROL JOINT
- 4.12 ALUMINUM STOREFRONT WINDOW SYSTEM
- 4.13 FIBER CEMENT SIDING
- 4.18 FRAMED PATIO / BALCONY

GENERAL ELEVATION NOTES

1. ALL ROOF MOUNTED MECHANICAL EQUIPMENT SHALL BE FULLY SCREENED BY PARAPET WALLS EQUAL TO OR GREATER THAN THE HIGHEST POINT ON THE MECHANICAL EQUIPMENT.
2. SOLID MASONRY WALLS AND GATES EQUAL TO, OR GREATER THAN, THE HIGHEST POINT ON THE MECHANICAL EQUIPMENT SHALL SCREEN ALL GROUND MOUNTED MECHANICAL EQUIPMENT.
3. ANY ROOF ACCESS LADDERS SHALL BE LOCATED INSIDE THE BUILDING. ROOF DRAINAGE SHALL UTILIZE INTERIOR ROOF DRAINS OR BE ARCHITECTURALLY INTEGRATED INTO THE BUILDING DESIGN. ARCHITECTURALLY INTEGRATED FLOOR DRAINS SHALL REQUIRE ADDITIONAL ARTICULATION BEYOND PAINT ACCENTS. SECTION 35-1902 (B)(e) (1)(i), ZONING CODE.
4. SCREENING SHALL BE ARCHITECTURALLY INTEGRATED FOR THE SERVICE ENTRANCE SECTION (SES) AND ALL UTILITIES. ALL GROUND MOUNTED EQUIPMENT SHALL BE SCREENED FROM PUBLIC VIEW BY A CONCRETE OR MASONRY WALL WITH SOLID GATES, EQUAL TO OR GREATER IN HEIGHT THAN THE MECHANICAL EQUIPMENT. SECTION 35-1902 (B) (e)(1)(i), ZONING CODE.
5. SIGNS REQUIRE A SEPARATE SUBMITTAL AND PERMIT.
6. ALL ROOF EQUIPMENT, HVAC, TRASH CHUTE AND ANY ELEVATOR VENTS, ETC., ARE TO BE BELOW THE LOWEST BUILDING PARAPET ELEVATION.
7. ALL ROOF DRAINAGE (SYSTEM) IS INTERNAL TO THE BUILDING.
8. SES IS WITHIN AN INTERNAL ELECTRICAL ROOM.

EXTERIOR COLOR SCHEME

EXTERIOR FINISH SCHEDULE		
LOCATION	MFG. / PAINT	COLOR
A PAINT	SHERWIN WILLIAMS	DE 6247 "GARDEN PEBBLE" LRV 71
B PAINT	DUNN EDWARDS	DE6255 "WISHING WELL" LRV 58
C PAINT	DUNN EDWARDS	DE6313 "ENCHANTED EYE" LRV 21
D PAINTED METALS & RAILINGS	DUNN EDWARDS	DEA187 "BLACK" LRV 3
D1 BALCONY RAIL	MCNICHOLS - METAL MESH	SQUARE 2" X 2"
D2 METAL SHADE CANOPY	MCNICHOLS	PERFORATED METAL - 23% OPEN AREA
E FIBER CEMENT LAP SIDING	DUNN EDWARDS	DET681 "MODERNE CLASS" LRV 11
F STONE VENEER	CORONADO	OLD WORLD LEDGE ANTIQUE CREAM
G THIN BRICK VENEER	SUMMIT	FACE BRICK, 702 TBL CONCORDE
H WINDOW FRAME	CLEAR ANODIZED ALUM.	SILVER METALIC

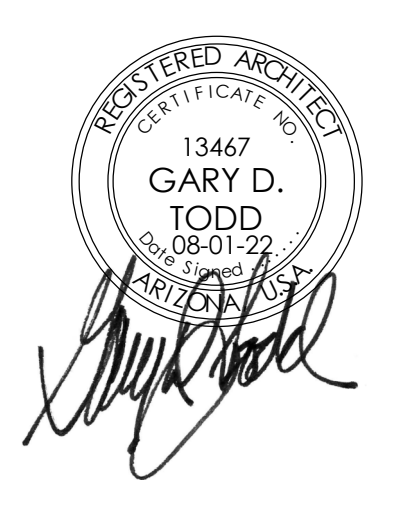


**TODD+ ASSOCIATES**  
602-952-8280 / TODDASSOC.COM  
21-2031-00



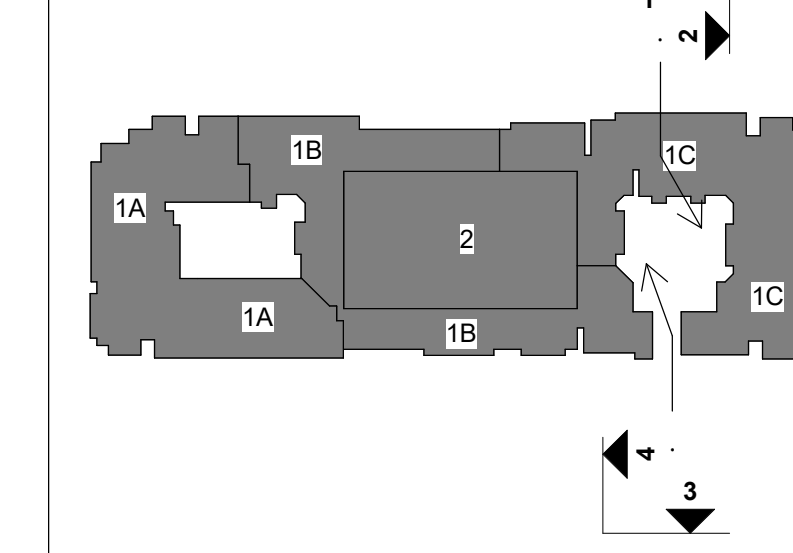
**BELLA ALBA**  
1000 N. SCOTTSDALE RD SCOTTSDALE, ARIZONA  
DRB 3RD SUBMITTAL  
08-01-22

EXTERIOR ELEVATIONS



**4.6C**

KEYMAP



KEYNOTES

- 4.1 EXTERIOR STUCCO SYSTEM
- 4.2 STUCCO PARAPET CAP
- 4.3 FOAM / STUCCO POP-OUT WITH SAND FINISH (4")
- 4.4 WINDOW
- 4.5 METAL RAILING
- 4.6 DOOR PER PLAN
- 4.7 STUCCO CONTROL JOINT
- 4.8 GATE, SEE DETAILS
- 4.9 FRAMED PATIO / BALCONY

GENERAL ELEVATION NOTES

1. ALL ROOF MOUNTED MECHANICAL, EQUIPMENT SHALL BE FULLY SCREENED BY PARAPET WALLS EQUAL TO, OR GREATER THAN, THE HIGHEST POINT ON THE MECHANICAL EQUIPMENT.
2. SOLID MASONRY WALLS AND GATES EQUAL TO, OR GREATER THAN, THE HIGHEST POINT ON THE MECHANICAL EQUIPMENT SHALL SCREEN ALL GROUND MOUNTED MECHANICAL EQUIPMENT.
3. ANY ROOF ACCESS LADDERS SHALL BE LOCATED INSIDE THE BUILDING. ROOF DRAINAGE SHALL UTILIZE INTERIOR ROOF DRAINS OR BE ARCHITECTURALLY INTEGRATED INTO THE BUILDING DESIGN. ARCHITECTURALLY INTEGRATED FLOOR DRAINS SHALL REQUIRE ADDITIONAL ARTICULATION BEYOND PAINT ACCENTS, SECTION 35-1902 (8)(e) (15), ZONING CODE.
4. SCREENING SHALL BE ARCHITECTURALLY INTEGRATED FOR THE SERVICE ENTRANCE SECTION (SES) AND ALL UTILITIES. ALL GROUND MOUNTED EQUIPMENT SHALL BE SCREENED FROM PUBLIC VIEW BY A CONCRETE OR MASONRY WALL WITH SOLID GATES, EQUAL TO OR GREATER IN HEIGHT THAN THE MECHANICAL EQUIPMENT, SECTION 35-1902 (8) (e)13, ZONING CODE.
5. SIGNS REQUIRE A SEPARATE SUBMITTAL AND PERMIT.
6. ALL ROOF EQUIPMENT, HVAC, TRASH CHUTE AND ANY ELEVATOR VENTS, ETC. ARE TO BE BELOW THE LOWEST BUILDING PARAPET ELEVATION.
7. ALL ROOF DRAINAGE (SYSTEM) IS INTERNAL TO THE BUILDING.
8. SES IS WITHIN AN INTERNAL ELECTRICAL ROOM.

EXTERIOR COLOR SCHEME

EXTERIOR FINISH SCHEDULE			
	LOCATION	MFG. / PAINT	COLOR
A	PAINT	SHERWIN WILLIAMS	DE 6247 "GARDEN PEBBLE" LRV 71
B	PAINT	DUNN EDWARDS	DE6255 "WISHING WELL" LRV 58
C	PAINT	DUNN EDWARDS	DE6313 "ENCHANTED EVE" LRV 21
D	PAINTED METALS & RAILINGS	DUNN EDWARDS	DEA187 "BLACK" LRV 3
D1	BALCONY RAIL	MCNICHOLS - METAL MESH	SQUARE 2" X 2"
D2	METAL SHADE CANOPY	MCNICHOLS	PERFORATED METAL - 23% OPEN AREA
E	FIBER CEMENT LAP SIDING	DUNN EDWARDS	DET681 "MODERNE CLASS" LRV 11
F	STONE VENEER	CORONADO	OLD WORLD LEDGE ANTIQUE CREAM
G	THIN BRICK VENEER	SUMMIT	FACE BRICK, 702 TBL CONCORDE
H	WINDOW FRAME	CLEAR ANODIZED ALUM.	SILVER METALIC



3 WEST - 3 - COLOR  
3/32" = 1'-0"



1 EAST - 3 - COLOR  
3/32" = 1'-0"



4 NORTH - 3 - COLOR  
3/32" = 1'-0"



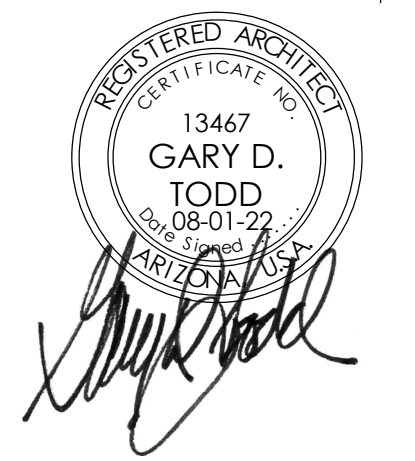
2 SOUTH - 3 - COLOR  
3/32" = 1'-0"

**TODD+ ASSOCIATES**  
602-952-8280 / TODDASSOC.COM  
21-2031-00



**BELLA ALBA**  
1000 N. SCOTTSDALE RD SCOTTSDALE, ARIZONA  
DRB 3RD SUBMITTAL  
08-01-22

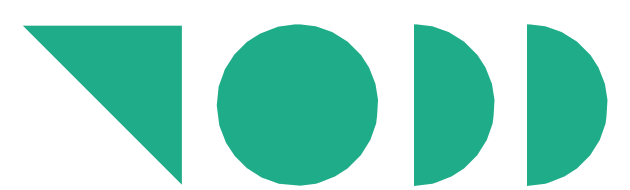
EXTERIOR ELEVATIONS



**4.7C**







**TODD+  
ASSOCIATES**

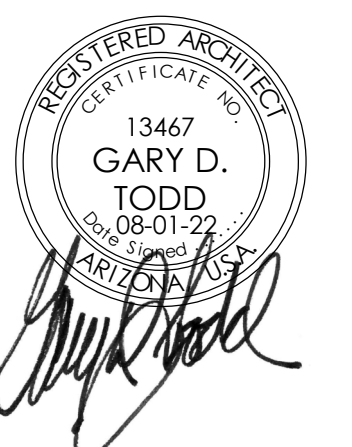
602-952-8280 / TODDASSOC.COM

21-2031-00



**BELLA ALBA**  
1000 N. SCOTTSDALE RD SCOTTSDALE, ARIZONA  
DRB 3RD SUBMITTAL  
08-01-22

PERSPECTIVE FROM  
CLUBHOUSE ENTRY



**7.2**