

PROJECT CONTACT LIST:

ENGINEER OF RECORD
KIMLEY-HORN AND ASSOCIATES, INC.
GARRETT FRAME, P.E.
7740 N. 16TH STREET, STE 300
PHOENIX, AZ, 85020
TEL: (602) 944-5500
GARRETT.FRAME@KIMLEY-HORN.COM

QT REAL ESTATE PROJECT MANAGER
QUIKTRIP CORPORATION
DANIEL CHAMBERS
1116 E BROADWAY RD
TEMPE, AZ 85282
TEL: (480) 330-9127
(480) 446-6321
DANIEL.CHAMBERS@QUIKTRIP.COM

SURVEYOR OF RECORD
ATWELL, LLC.
JAMES G. SPRING, PLS
4700 E. SOUTHERN AVENUE
MESA, AZ 85206
TEL: (480) 218-8831

QT CIVIL PROJECT MANAGER
QUIKTRIP CORPORATION
ASHLEY GOODRICH
1116 SOUTH 129TH EAST AVE.
TULSA, OK 74134
TEL: (918) 615-7273
AGOODRIC@QUIKTRIP.COM

BASIS OF BEARING:

PER ATWELL LLC., THE BASIS OF BEARING IS THE WEST LINE OF THE NORTHWEST QUARTER OF SECTION 26, TOWNSHIP 4 NORTH, RANGE 4 EAST, G.&S.R.M., SHOWN HEREON AS BEARING BEING S00°01'45"E A DISTANCE OF 2639.93'.

LEGAL DESCRIPTION

LOT 3, OF REPLAT PARCEL 1 OF ONE SCOTTSDALE, ACCORDING TO THE PLAT OF RECORD IN THE OFFICE OF THE COUNTY RECORDER OF MARICOPA COUNTY, ARIZONA, RECORDED IN BOOK 1115 OF MAPS, PAGE 41.

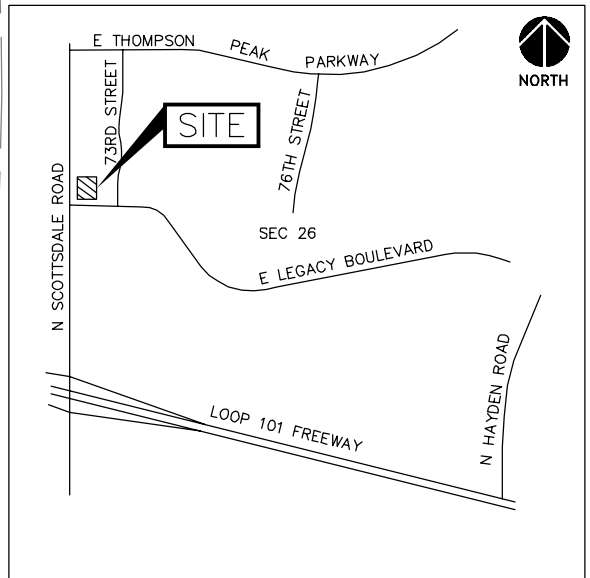
BENCHMARK:

PER ATWELL LLC., THE BENCHMARK IS NORTHWEST CORNER SECTION 26, T.4N., R.4E.
ELEVATION = 1662.72 (NAVD88)
(CITY OF SCOTTSDALE VERTICAL DATUM)

MATCH LINE: SEE SHEET SP2

SITE LEGEND

- BOUNDARY LINE
- CONCRETE CURB AND GUTTER
- MOUNTABLE CURB W/RADIUS PROTECTOR
- PARKING SPACE INDICATOR
- AREA LIGHT
- MULTIPLE PRODUCT DISPENSER WITH CANOPY COLUMNS AND BOLLARDS
- TRANSFORMER
- FUEL SYSTEM ACCESS MANWAY



Vicinity Map

Not to Scale
SECTION 26
T.4N., R.4E., G.&S.R.B.&M.
MARICOPA COUNTY, ARIZONA

SITE DATA (QUIKTRIP STORE)

PROPOSED/EXISTING ZONING:	PRC-PCD
PROPOSED USE:	GAS STATION/CONV. STORE
APN:	215-05-010
SITE AREA INFORMATION:	
GROSS AREA (TO CENTERLINE):	143,444 S.F. 3.29 A.C.
NET AREA:	88,493 S.F. 2.03 A.C.
QUIKTRIP BUILDING:	5,312 S.F.
QUIKTRIP FUELING CANOPY:	7,345 S.F.
PARCEL COVERAGE:	12,657/88,493 = 14%
LANDSCAPE AREA:	36,026 SF (40.1% OF NET AREA)
SERVICE BAYS:	16
PARKING REQUIRED:	1/250 S.F.+ 3/S.B. = 68 P.S.
PARKING PROVIDED:	59 (3 ACCESSIBLE, 16 S.B.)
BICYCLE SPACES REQUIRED:	1/10 P.S. = 7 B.S.
BICYCLE SPACES PROVIDED:	8
MAX BUILDING HEIGHT:	20'-0" AT FRONT DOOR
CONSTRUCTION TYPE:	V-B SPRINKLERED

- NOTES:
- ALL CROSSWALKS SHALL BE DECORATIVE CONCRETE.
 - ALL SIGNS ARE SUBJECT TO SEPARATE REVIEW AND APPROVAL.



PROJECT NO.: 291443018



© 2022 KIMLEY-HORN AND ASSOCIATES, INC.
7740 NORTH 16TH STREET, SUITE 300
PHOENIX, ARIZONA 85020 (602) 944-5500

QuikTrip No. 0480
NEC SCOTTSDALE ROAD & LEGACY BOULEVARD
SCOTTSDALE, AZ



© COPYRIGHT QUIKTRIP CORPORATION 2011
ANY UNAUTHORIZED USE, REPRODUCTION,
PUBLICATION, DISTRIBUTION, OR SALE IN
WHOLE OR IN PART, IS STRICTLY FORBIDDEN.

PROTOTYPE: P-108 (11/01/21)

DIVISION:

VERSION: 001

DESIGNED BY:

DRAWN BY:

REVIEWED BY:

REV	DATE	DESCRIPTION

SHEET TITLE:

PRELIMINARY SITE PLAN

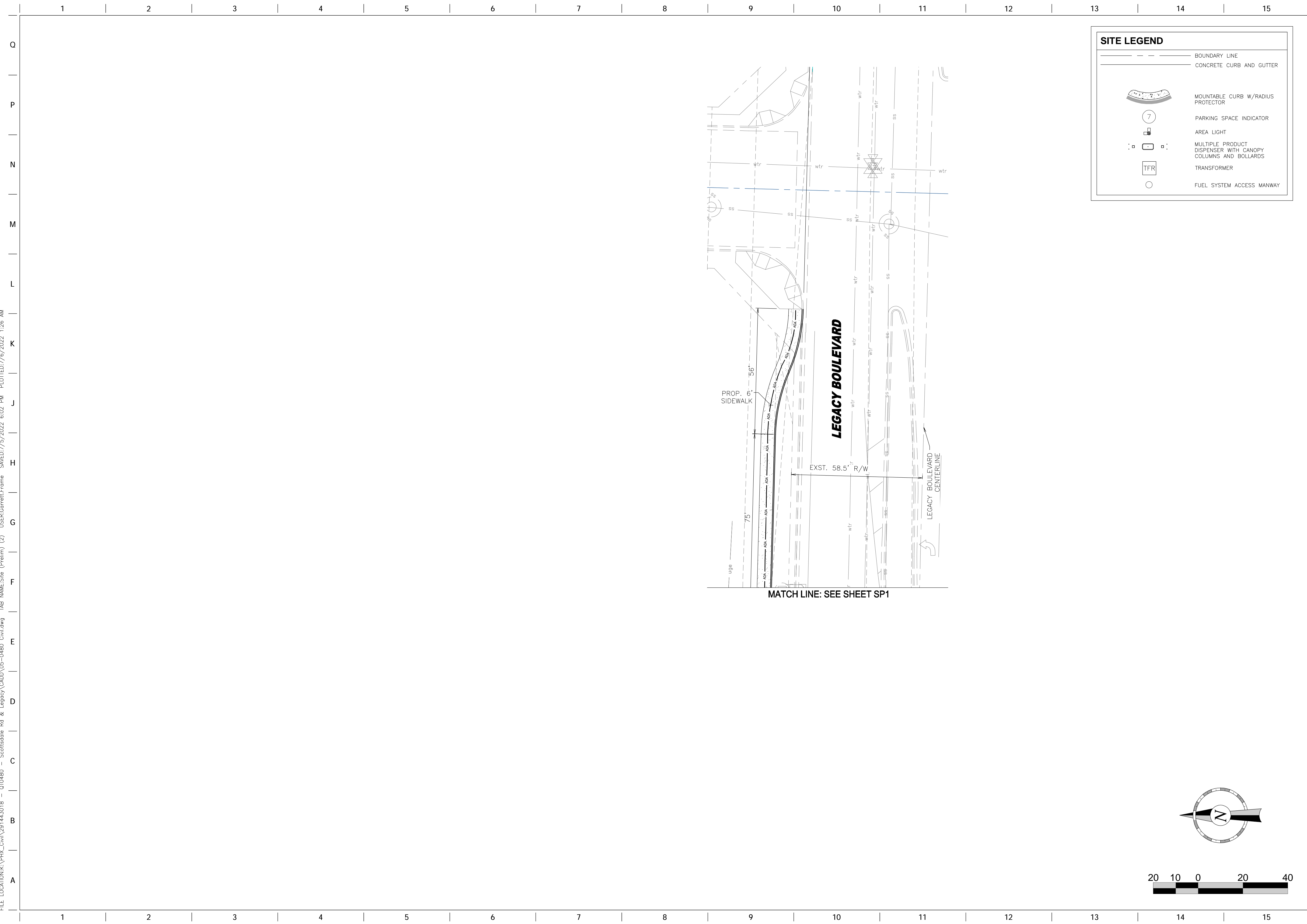
SHEET NUMBER:

SP1

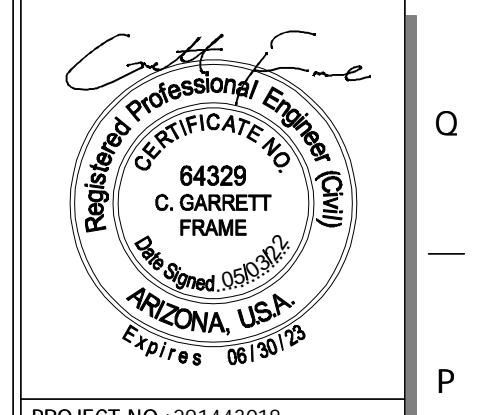
ORIGINAL ISSUE DATE: 07/06/2022

FILE LOCATION: \\P:\P\H_C\W\291443018 - 070480 - Scottsdale Rd & Legacy\CAD\05-0480 Civil.dwg TAB NAME: Site (Final) USER: Cgarrett.Frame SAVED: 7/6/2022 3:41 PM PLOTTED: 7/6/2022 3:42 PM

FILE LOCATION: P:\PHX_Civil\291443018 - 070480 - Scottsdale Rd & Legacy\CAD\05-0480 Civil.dwg TAB NAME: Site (Prelim) (2) USER: Ggarrett.Frome SAVED: 7/5/2022 6:02 PM PLOTTED: 7/6/2022 1:26 AM



SITE LEGEND	
	BOUNDARY LINE
	CONCRETE CURB AND GUTTER
	MOUNTABLE CURB W/RADIUS PROTECTOR
	PARKING SPACE INDICATOR
	AREA LIGHT
	MULTIPLE PRODUCT DISPENSER WITH CANOPY COLUMNS AND BOLLARDS
	TRANSFORMER
	FUEL SYSTEM ACCESS MANWAY



PROJECT NO.: 291443018

Kimley»Horn
 © 2022 KIMLEY-HORN AND ASSOCIATES, INC.
 7740 NORTH 16TH STREET, SUITE 300
 PHOENIX, ARIZONA 85024 (602) 944-2500

QuikTrip No. 0480
 NEC SCOTTSDALE ROAD & LEGACY BOULEVARD
 SCOTTSDALE, AZ

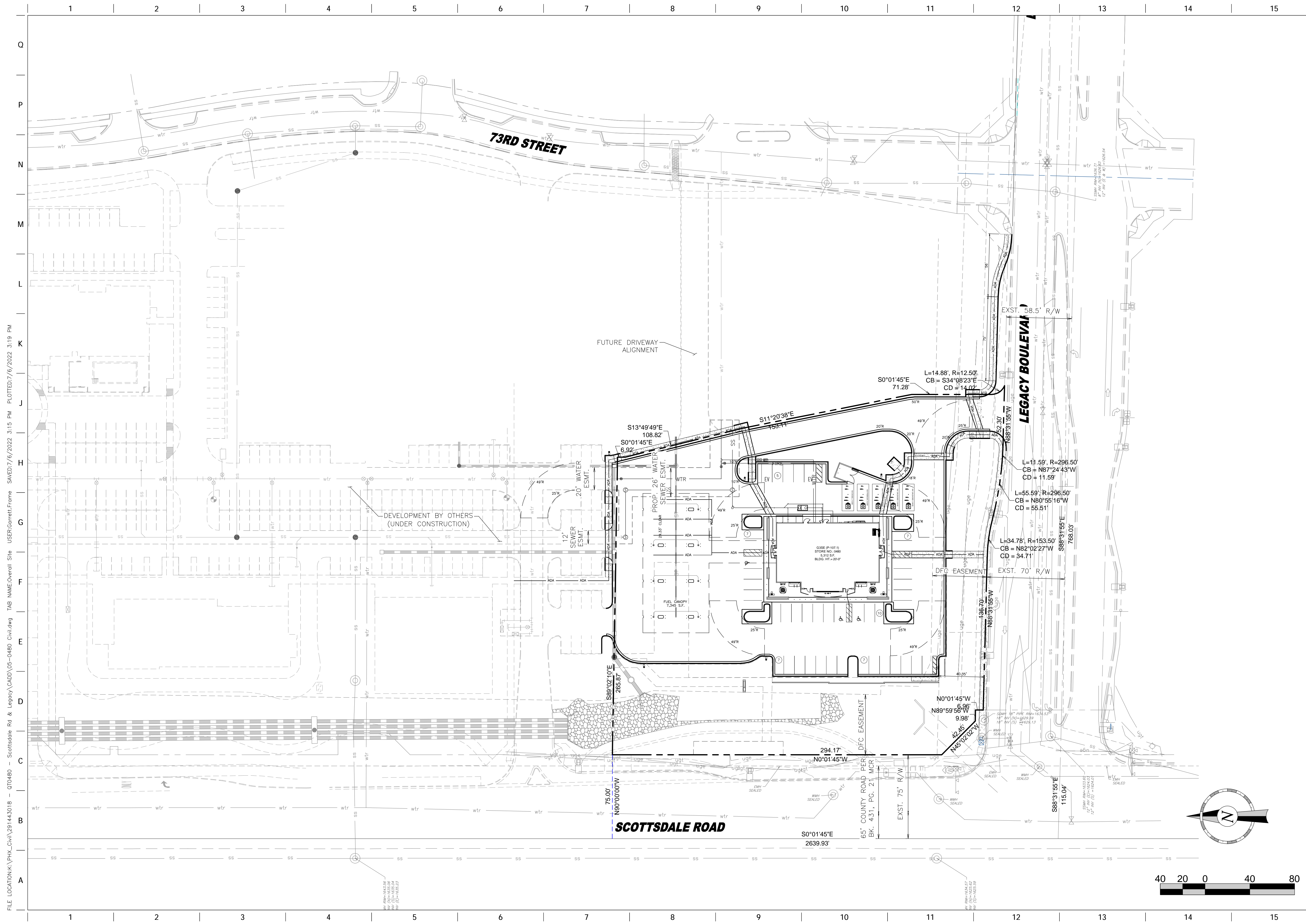
© COPYRIGHT QUIKTRIP CORPORATION 2011 ANY UNAUTHORIZED USE, REPRODUCTION, PUBLICATION, DISTRIBUTION, OR SALE IN WHOLE OR IN PART, IS STRICTLY FORBIDDEN.	
PROTOTYPE:	P-108 (11/01/21)
DIVISION:	
VERSION:	D01
DESIGNED BY:	
DRAWN BY:	
REVIEWED BY:	

REV	DATE	DESCRIPTION

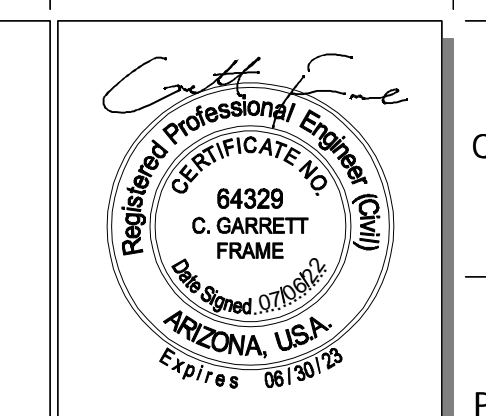
ORIGINAL ISSUE DATE: 06/30/2022

SHEET TITLE:
 PRELIMINARY SITE PLAN

SHEET NUMBER:
SP2



FILE LOCATION: P:\PH_Civil\291443018 - 070480 - Scottsdale Rd & Legacy\CAADD\05-0480 Civil.dwg TAB NAME: Overall Site USER: Garrett.Frame SAVED: 7/6/2022 3:15 PM PLOTTED: 7/6/2022 3:19 PM



PROJECT NO.: 291443018

Kimley»Horn

© 2022 KIMLEY-HORN AND ASSOCIATES, INC.
 7740 NORTH 16TH STREET, SUITE 300
 PHOENIX, ARIZONA 85024 (602) 444-5500

QuikTrip No. 0480

NEC SCOTTSDALE ROAD & LEGACY BOULEVARD
 SCOTTSDALE, AZ

QT

© COPYRIGHT QUIKTRIP CORPORATION 2011
 ANY UNAUTHORIZED USE, REPRODUCTION,
 PUBLICATION, DISTRIBUTION, OR SALE IN
 WHOLE OR IN PART, IS STRICTLY FORBIDDEN.

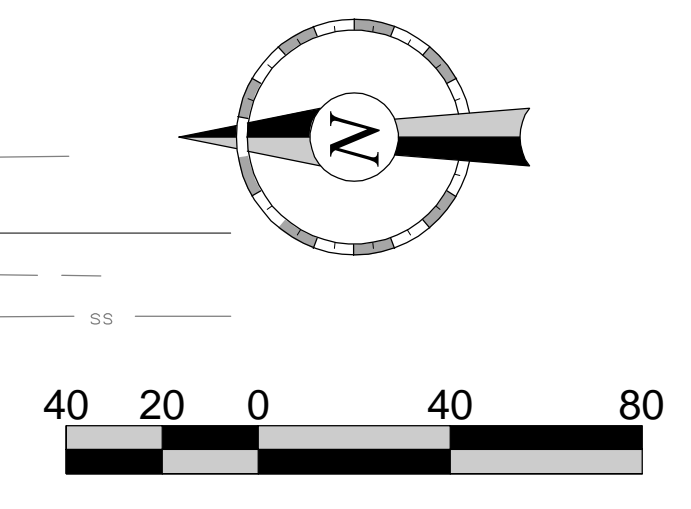
PROTOTYPE: P-108 (11/01/21)
 DIVISION:
 VERSION: D01
 DESIGNED BY:
 DRAWN BY:
 REVIEWED BY:

REV	DATE	DESCRIPTION

SHEET TITLE:
 OVERALL SITE PLAN

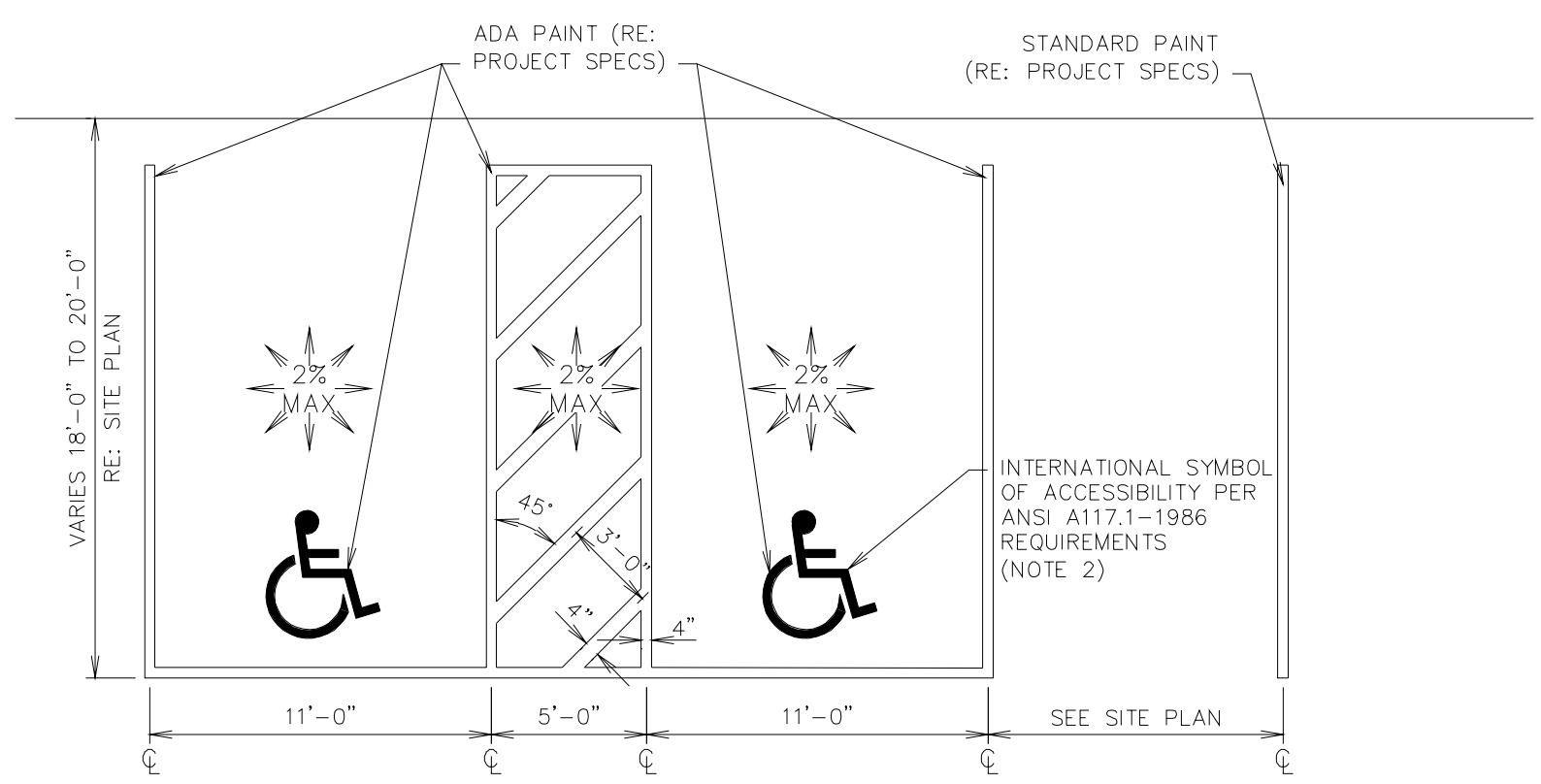
SHEET NUMBER:
SP3

ORIGINAL ISSUE DATE: 07/06/2022



1 2 3 4 5 6 7 8 9 10 11 12 13 14 15

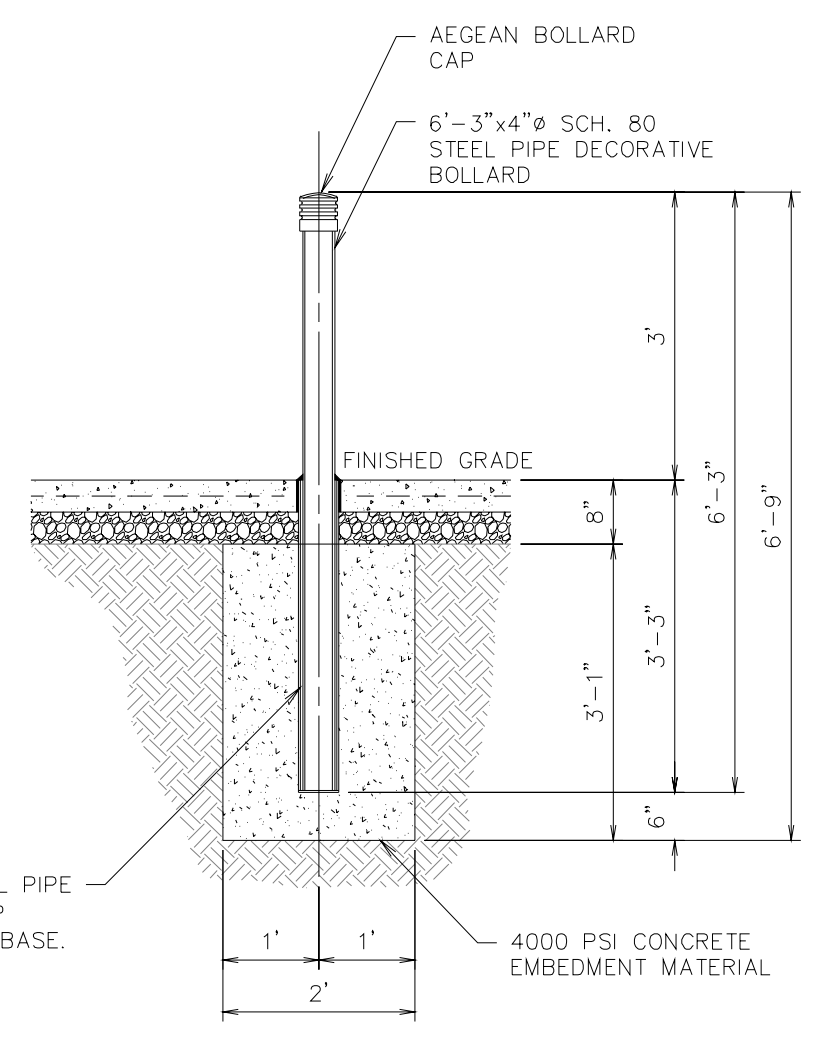
1. RE: SITE PLAN FOR LOCATION OF ADA PARKING SPACES AND ACCESS AISLE IN RELATIONSHIP TO THE DOOR LOCATION. (THIS DETAIL IS FOR STRIPING LAYOUT ONLY)
 2. PARKING STRIPES AND THE ADA INTERNATIONAL HANDICAP SYMBOL ARE TO BE PAINTED PER THE MANUFACTURER'S RECOMMENDATIONS. (RE: PROJECT SPECS)



L1 DOUBLE STALL ADA PARKING STRIPING DETAIL

NTS SN: AD001C008

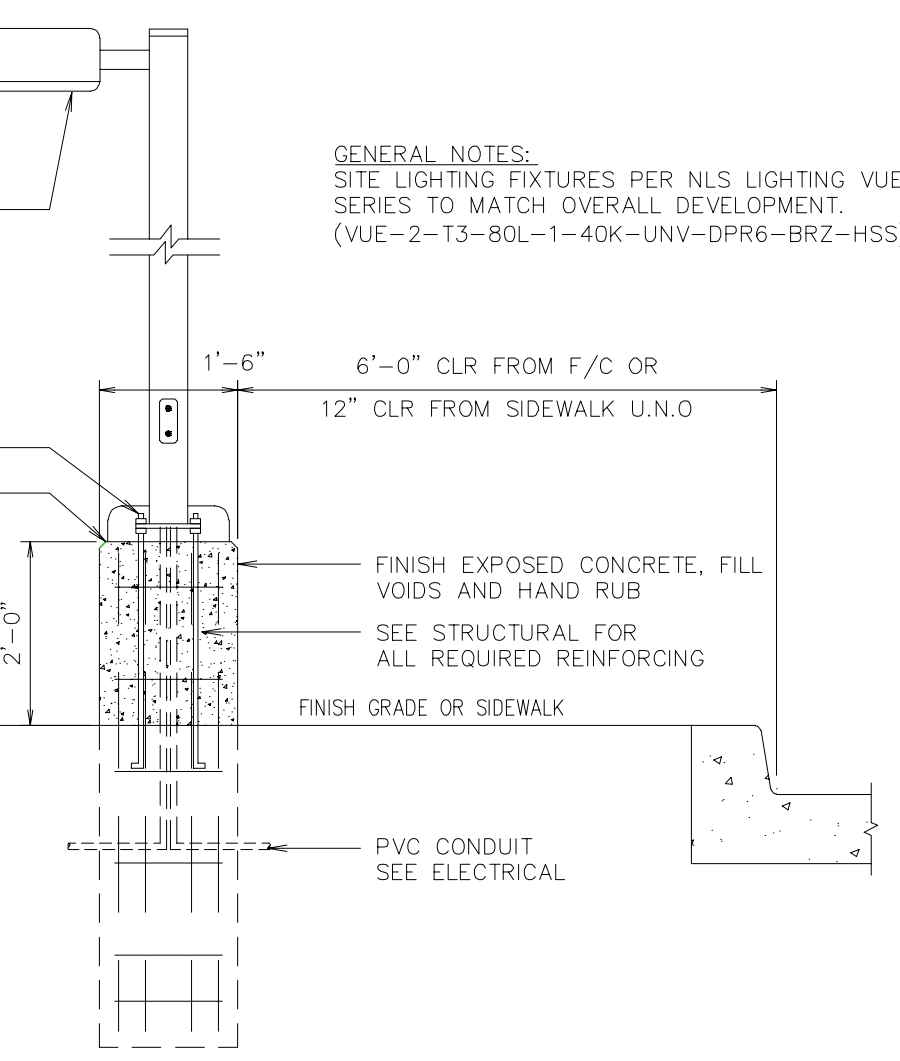
NOTES:
 1. FILL VOIDS W/SILICA SAND BETWEEN BOLLARD & SLEEVE ONCE BOLLARD IS INSERTED INTO SLEEVE.
 2. PAINT COLOR: DARK BROWN
 3. BOLLARD FOOTING INSTALLED INTO SOIL CAPABLE OF SUSTAINING AN ALLOWABLE LATERAL BEARING PRESSURE OF 200 PSF/FT OF DEPTH.
 4. WHERE EMBEDDED IN CONCRETE:
 4.a. EXTEND SLEEVE TO WITHIN 1/4" OF TOP OF CONCRETE OR 2" ABOVE GRADE IN LANDSCAPE AREAS
 4.b. 2 LAYERS 15# FELT AROUND PIPE SLEEVE BETWEEN CONCRETE SIDEWALK AND SLEEVE
 4.c. SEAL AROUND PERIMETER JOINT WITH SONOLASTIC NP2 SEALANT



F1 4" BOLLARD DETAIL

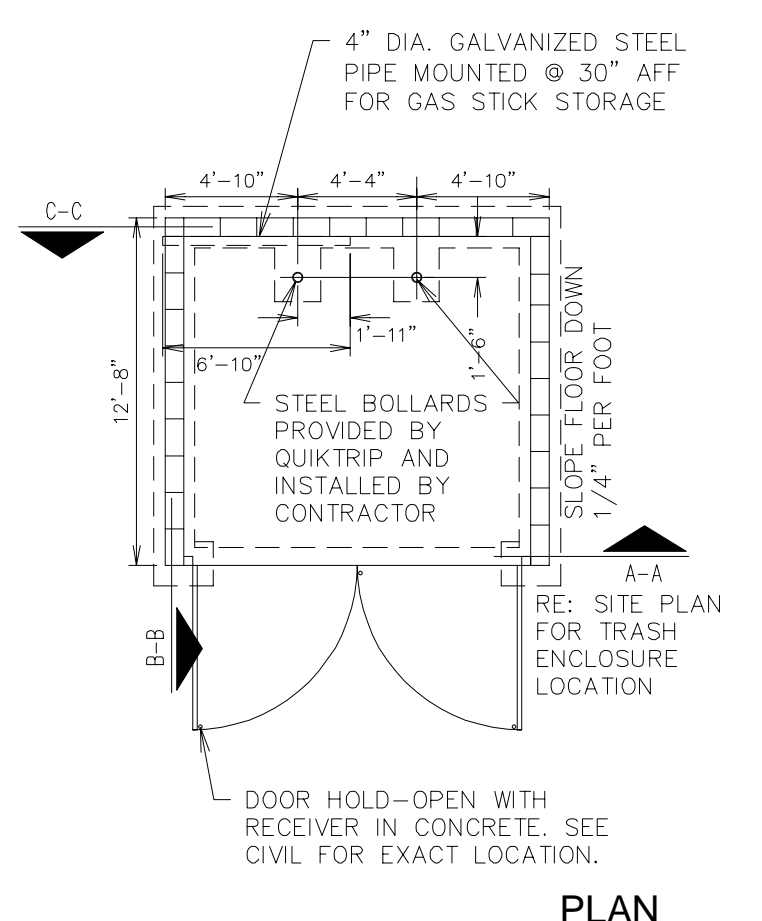
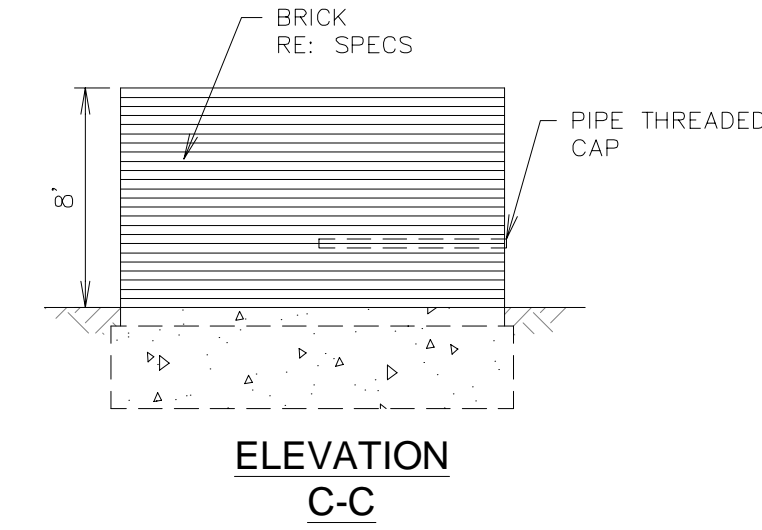
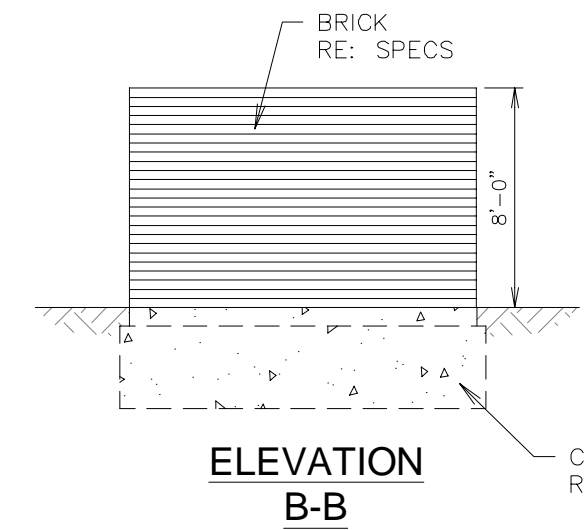
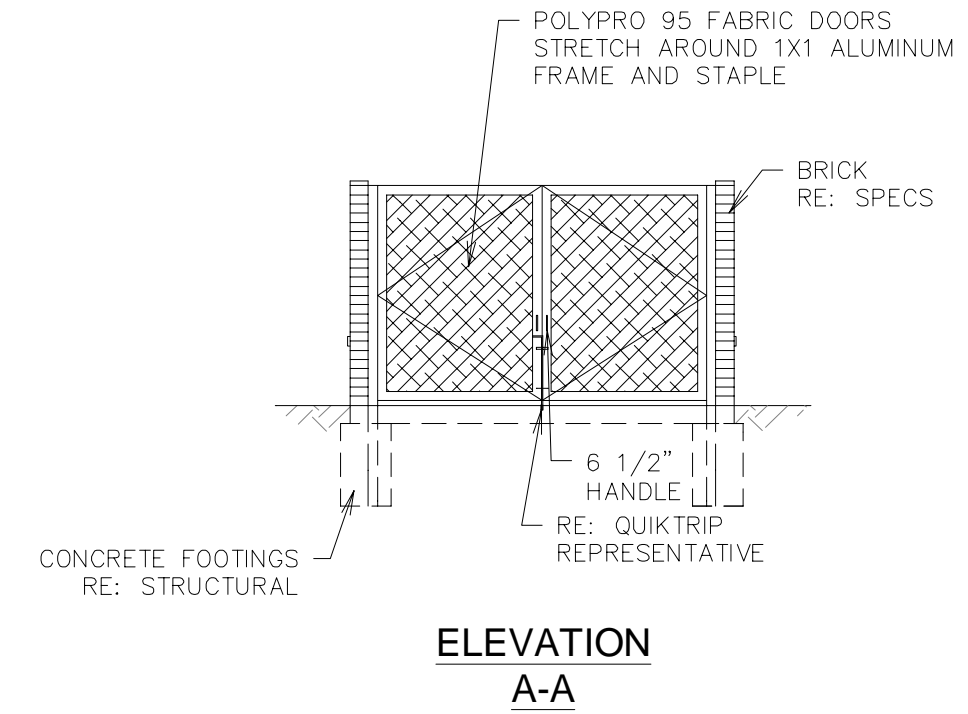
NTS SN:

NOTE: PARKING LOT LUMINAIRES MUST MATCH EXISTING.
 SEE NOTE THIS DETAIL



A1 LIGHT POLE DETAIL

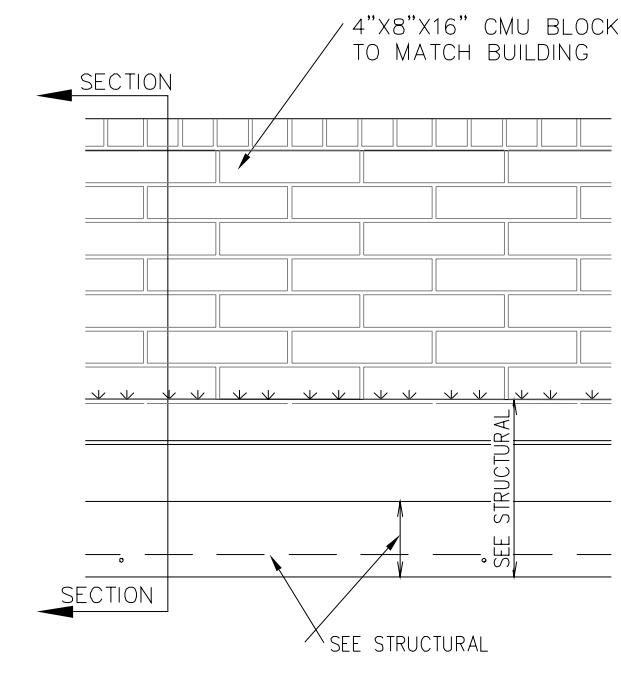
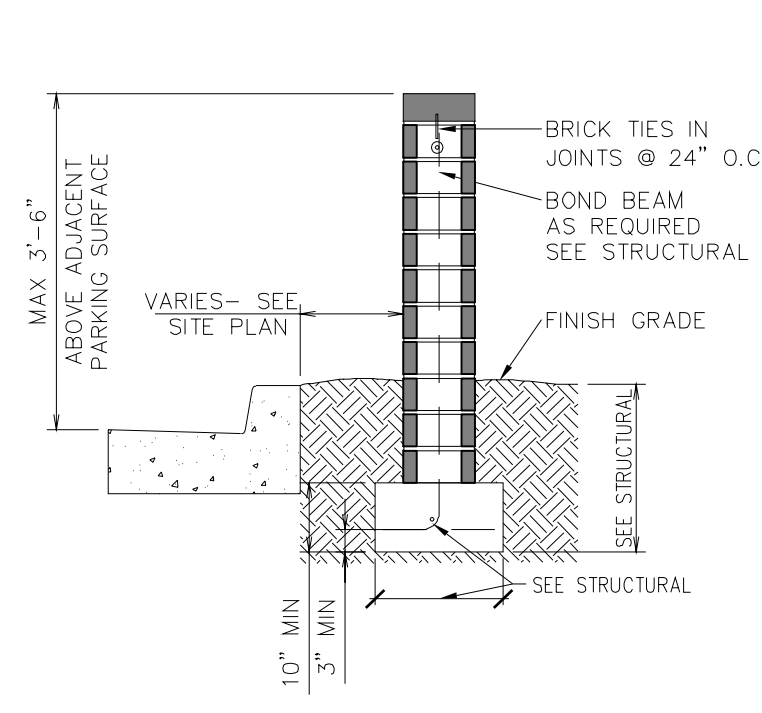
NTS SN:



L6 SINGLE TRASH ENCLOSURE

NTS SN:

NOTE:
 PROVIDE EXPANSION JOINT @ MAX. 24'-0" INTERVALS OR AT EACH CHANGE IN WALL HEIGHT OR AT ANY INTERSECTION. SEE STRUCTURAL

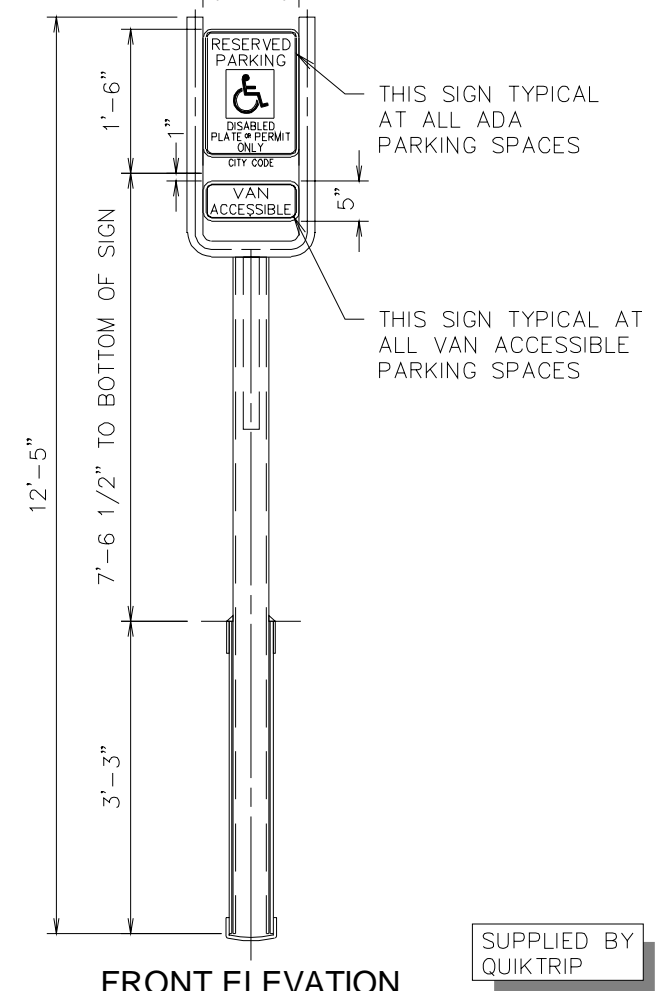
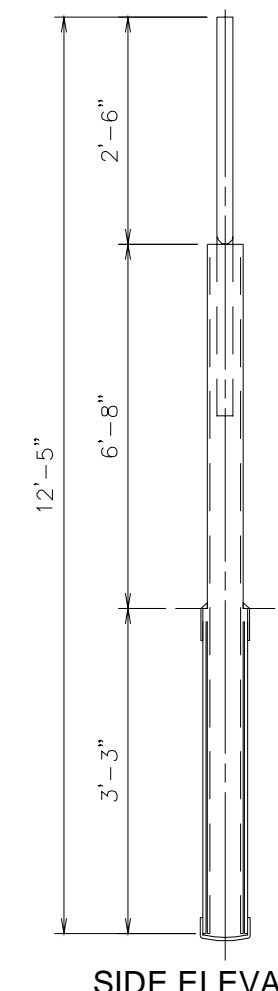
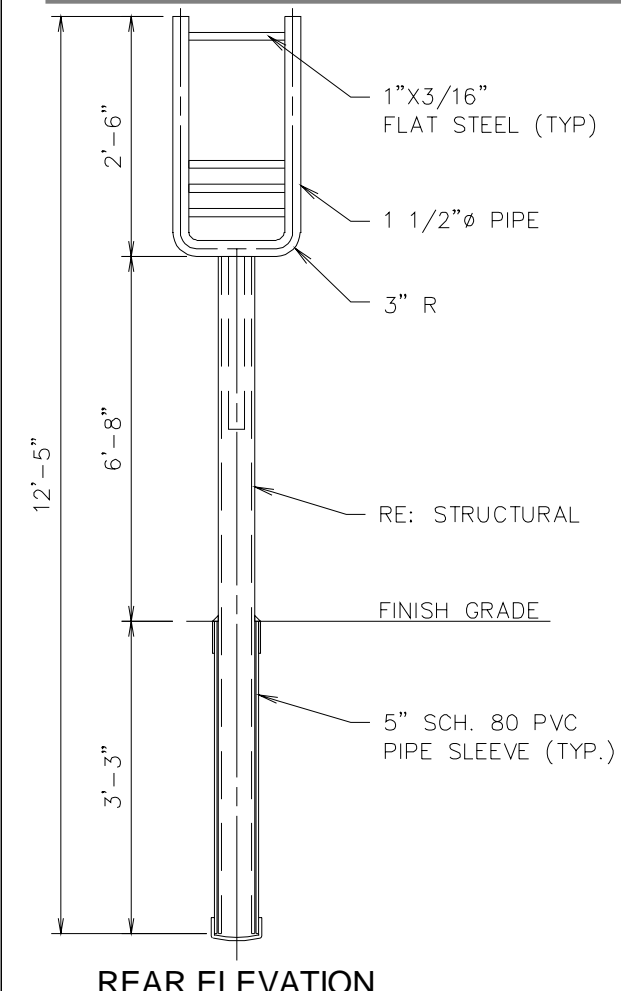


NOTE:
 WHERE GRADE CHANGE NECESSITATES STEP WALL IN 8" INCREMENTS

F6 LANDSCAPE SCREEN WALL DETAIL

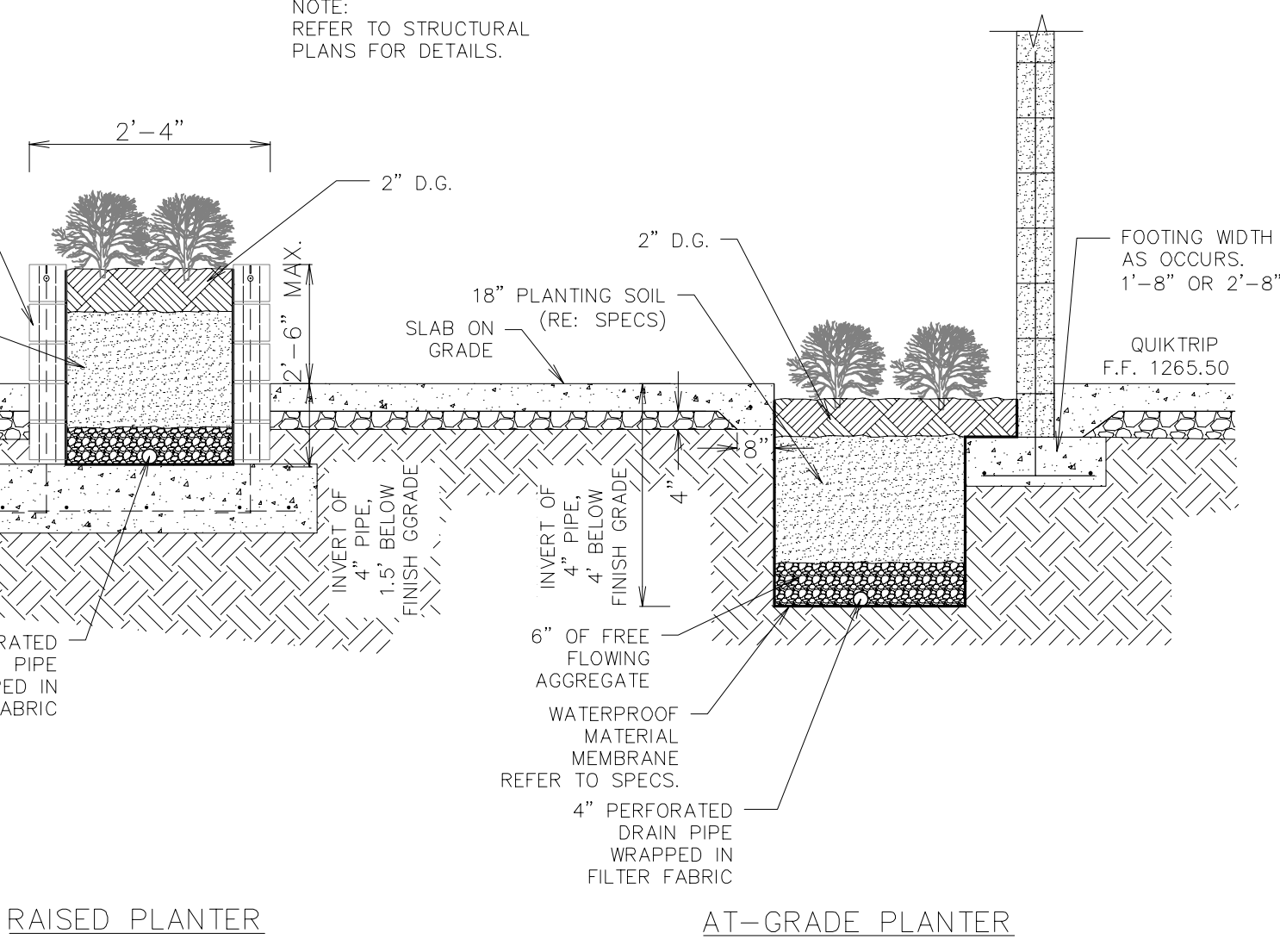
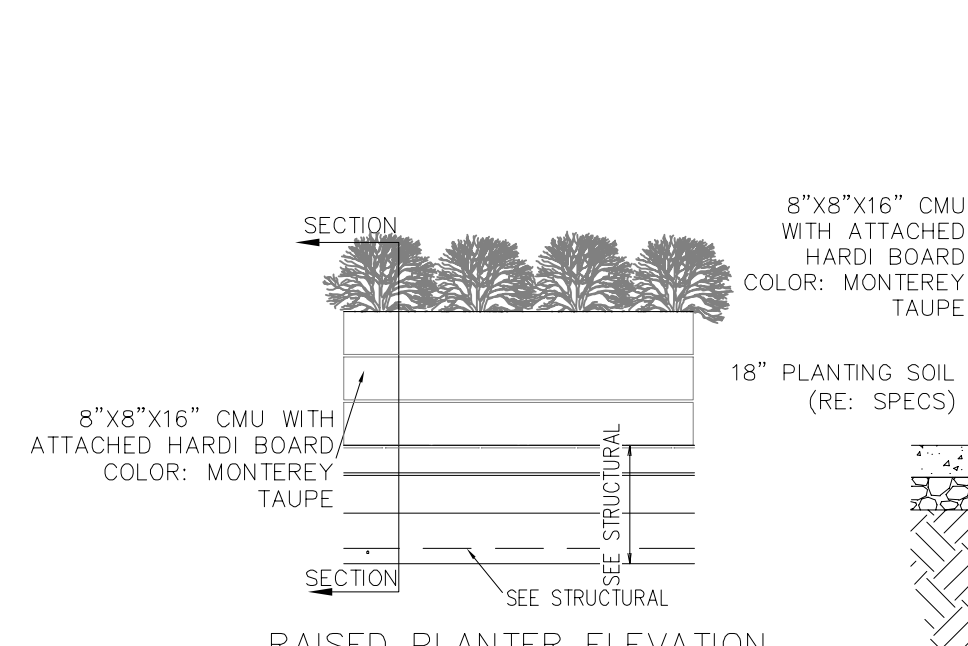
NTS SN:

1. RE: SITE PLAN FOR DETERMINING LOCATION.
 2. ADA SIGNAGE TO BE FASTENED TO FRAME USING POP RIVETS.



F11 ADA SIGN IN BOLLARD

NTS SN: AD003C009



A6 RAISED AND AT-GRADE PLANTER

NTS SN:



PROJECT NO.: 291443018
Kimley»Horn
 © 2022 KIMLEY-HORN AND ASSOCIATES, INC.
 7740 NORTH 16TH STREET, SUITE 300
 PHOENIX, ARIZONA 85021 (602) 444-5500

QuikTrip No. 0480
 NEC SCOTTSDALE ROAD & LEGACY BOULEVARD
 SCOTTSDALE, AZ



© COPYRIGHT QUIKTRIP CORPORATION 2011
 ANY UNAUTHORIZED USE, REPRODUCTION,
 PUBLICATION, DISTRIBUTION, OR SALE IN
 WHOLE OR IN PART, IS STRICTLY FORBIDDEN.
 PROTOTYPE: P-108 (11/01/21)
 DIVISION:
 VERSION: 001
 DESIGNED BY:
 DRAWN BY:
 REVIEWED BY:

REV	DATE	DESCRIPTION

SHEET TITLE:
 SITE PLAN DETAILS SHEET 1

SHEET NUMBER:
SP4

ORIGINAL ISSUE DATE: 07/06/2022

FILE LOCATION: K:\PHX_Civil\291443018 - 010480 - Scottsdale Rd & Legacy\CAD\Details\DETAILS SITE.dwg TAB NAME: SITE DETAIL SHEET 1 USER: Cgarrett:Frame SAVED: 7/16/2022 3:48 PM PLOTTED: 7/16/2022 3:52 PM



APPROVED
Per SF *[Signature]* 07/07/2022



APPROVED
Per SF *[Signature]* 07/07/2022



APPROVED
Per SF *[Signature]* 07/07/2022



BRUSHED ALUMINUM - FASCIA
REYNOBOND

DARK GREY ACCENT -
(TO MATCH HOTEL PALETTE)

LIGHT TAN METAL - FASCIA/TRIM
(TO MATCH HOTEL PALETTE)

EARTH TONE - ALUCOBOND PANEL
(TO MATCH HOTEL PALETTE)

CROSSVILLE TILE
(TO MATCH HOTEL PALETTE)

LAP SIDING - HARDIEPLANK
(TO MATCH HOTEL PALETTE)

APPROVED
Per SF *[Signature]* 07/07/2022