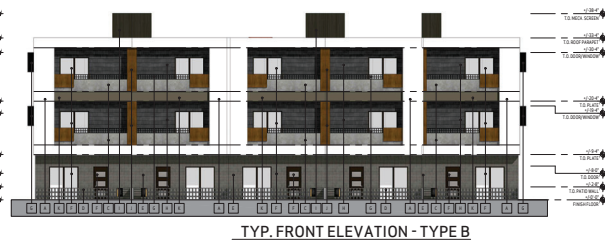
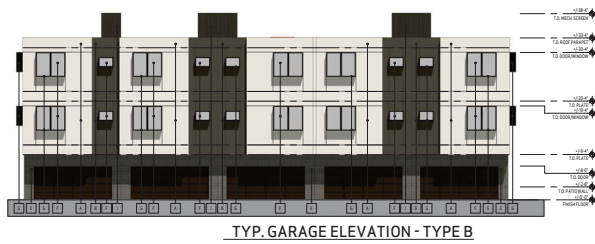
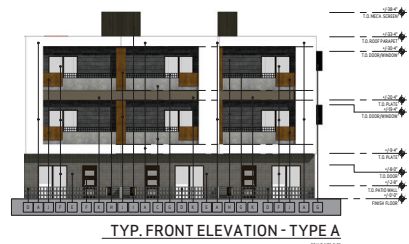
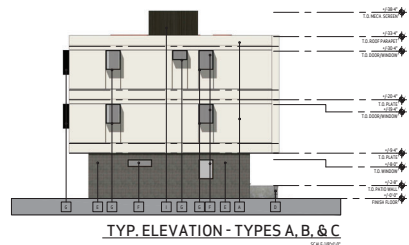
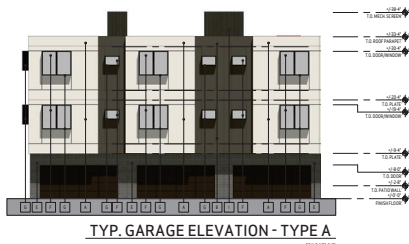
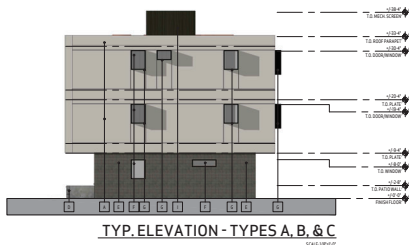


- A. ALL MATERIAL NOTE CALLOUTS ARE TYPICAL UNLESS NOTED OTHERWISE.
- B. SIGNAGE BY OTHERS - UNDER SEPARATE REVIEW AND PERMIT.
- C. BUILDING ACCESS IS TO BE PROVIDED PER FIRE DEPARTMENT REQUIREMENTS AND SUBJECT TO ARCHITECTS APPROVAL.
- D. ALL ROOF MOUNTED EQUIPMENT SHALL BE FULLY SCREENED BY SCREEN WALL.
- E. INSTALL ALL MATERIALS PER MANUFACTURER SPECIFICATIONS.
- F. ALL ROOF TOP DRAINS SHALL BE INTERNALLY PIPED.
- G. ROOF ACCESS SHALL BE PROVIDED FROM INTERIOR OF BUILDING. ROOF ACCESS SHALL NOT BE EXPOSED TO PUBLIC VIEW.
- H. FINISH GRAD TO SLOPE AWAY FROM STRUCTURE TO PROVIDE POSITIVE DRAINAGE AWAY FROM BUILDING.





GENERAL NOTES:

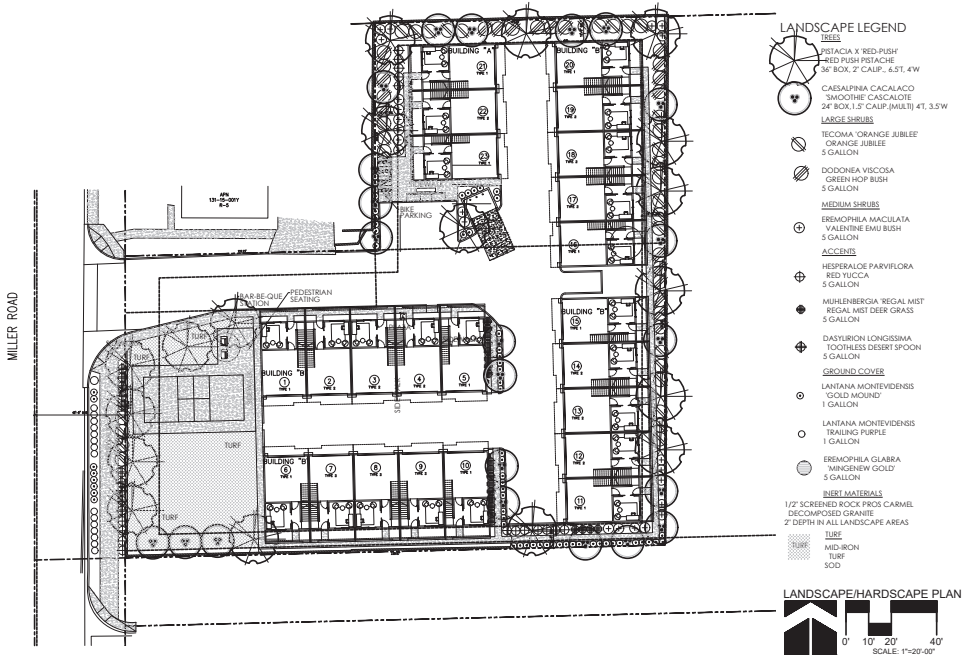
- GENERAL NOTES:**
- ALL MATERIAL NOTE CALLOUTS ARE TYPICAL UNLESS NOTED OTHERWISE.
 - SIGNAGE BY OTHERS - UNDER SEPARATE REVIEW AND PERMIT.
 - BUILDING ACCESS IS TO BE PROVIDED PER FIRE DEPARTMENT REQUIREMENTS AND SUBMITTED TO ARCHITECT'S APPROVAL.
 - ALL ROOF MOUNTED EQUIPMENT SHALL BE FULLY SCREENED BY SCREEN WALL.
 - INDICATE ALL MATERIALS PER MANUFACTURER SPECIFICATIONS.
 - ALL ROOFTOP DRAINS SHALL BE INTERNALLY PIPED.
 - ROOF ACCESS SHALL BE PROVIDED FROM INTERIOR OF BUILDING. ROOF ACCESS SHALL NOT BE EXPOSED TO PUBLIC VIEW.
 - FRESH GRASS TO GLOUSE AHEAD FROM STRUCTURE TO PROVIDE

MATERIAL SCHEDULE

21	WALL PAINT	PAINTED TO MATCH SURROUNDINGS
22	WALL COVERING	SEE 22.77E DASH
23	WALL COVERING	PAINTED TO MATCH FACIA AND SURROUNDINGS
24	WALL COVERING	SEE 22.78C BROWN
25	WALL COVERING	PAINTED TO MATCH SURROUNDINGS
26	WALL COVERING	SEE 22.78C FAWN
27	WALL COVERING	SEE 22.78C FAWN
28	WALL COVERING	SEE 22.78C FAWN
29	WALL COVERING	SEE 22.78C FAWN
30	WALL COVERING	SEE 22.78C FAWN
31	WALL COVERING	SEE 22.78C FAWN
32	WALL COVERING	SEE 22.78C FAWN
33	WALL COVERING	SEE 22.78C FAWN
34	WALL COVERING	SEE 22.78C FAWN
35	WALL COVERING	SEE 22.78C FAWN
36	WALL COVERING	SEE 22.78C FAWN
37	WALL COVERING	SEE 22.78C FAWN
38	WALL COVERING	SEE 22.78C FAWN
39	WALL COVERING	SEE 22.78C FAWN
40	WALL COVERING	SEE 22.78C FAWN
41	WALL COVERING	SEE 22.78C FAWN
42	WALL COVERING	SEE 22.78C FAWN
43	WALL COVERING	SEE 22.78C FAWN
44	WALL COVERING	SEE 22.78C FAWN
45	WALL COVERING	SEE 22.78C FAWN
46	WALL COVERING	SEE 22.78C FAWN
47	WALL COVERING	SEE 22.78C FAWN
48	WALL COVERING	SEE 22.78C FAWN
49	WALL COVERING	SEE 22.78C FAWN
50	WALL COVERING	SEE 22.78C FAWN
51	WALL COVERING	SEE 22.78C FAWN
52	WALL COVERING	SEE 22.78C FAWN
53	WALL COVERING	SEE 22.78C FAWN
54	WALL COVERING	SEE 22.78C FAWN
55	WALL COVERING	SEE 22.78C FAWN
56	WALL COVERING	SEE 22.78C FAWN
57	WALL COVERING	SEE 22.78C FAWN
58	WALL COVERING	SEE 22.78C FAWN
59	WALL COVERING	SEE 22.78C FAWN
60	WALL COVERING	SEE 22.78C FAWN
61	WALL COVERING	SEE 22.78C FAWN
62	WALL COVERING	SEE 22.78C FAWN
63	WALL COVERING	SEE 22.78C FAWN
64	WALL COVERING	SEE 22.78C FAWN
65	WALL COVERING	SEE 22.78C FAWN
66	WALL COVERING	SEE 22.78C FAWN
67	WALL COVERING	SEE 22.78C FAWN
68	WALL COVERING	SEE 22.78C FAWN
69	WALL COVERING	SEE 22.78C FAWN
70	WALL COVERING	SEE 22.78C FAWN
71	WALL COVERING	SEE 22.78C FAWN
72	WALL COVERING	SEE 22.78C FAWN
73	WALL COVERING	SEE 22.78C FAWN
74	WALL COVERING	SEE 22.78C FAWN
75	WALL COVERING	SEE 22.78C FAWN
76	WALL COVERING	SEE 22.78C FAWN
77	WALL COVERING	SEE 22.78C FAWN
78	WALL COVERING	SEE 22.78C FAWN
79	WALL COVERING	SEE 22.78C FAWN
80	WALL COVERING	SEE 22.78C FAWN
81	WALL COVERING	SEE 22.78C FAWN
82	WALL COVERING	SEE 22.78C FAWN
83	WALL COVERING	SEE 22.78C FAWN
84	WALL COVERING	SEE 22.78C FAWN
85	WALL COVERING	SEE 22.78C FAWN
86	WALL COVERING	SEE 22.78C FAWN
87	WALL COVERING	SEE 22.78C FAWN
88	WALL COVERING	SEE 22.78C FAWN
89	WALL COVERING	SEE 22.78C FAWN
90	WALL COVERING	SEE 22.78C FAWN
91	WALL COVERING	SEE 22.78C FAWN
92	WALL COVERING	SEE 22.78C FAWN
93	WALL COVERING	SEE 22.78C FAWN
94	WALL COVERING	SEE 22.78C FAWN
95	WALL COVERING	SEE 22.78C FAWN
96	WALL COVERING	SEE 22.78C FAWN
97	WALL COVERING	SEE 22.78C FAWN
98	WALL COVERING	SEE 22.78C FAWN
99	WALL COVERING	SEE 22.78C FAWN
100	WALL COVERING	SEE 22.78C FAWN

NOTE: GARAGE DOORS TO BE PAINTED TO MATCH

NOTE: EXTERIOR CEILINGS TO BE PAINTED.
MATERIAL: EXTERIOR GYP.
MANUFACTURER: GUNN EDWARDS
COLOR: DEER'S CASTLE ROCK
LBS: 115



LANDSCAPE LEGEND

- TREES**
- PISTACHIA X RED-PUSH
RED-PUSH PISTACHIE
36" BOX, 2" CALIP., 6.5T, 4W
 - CASAPALMA CACALACO
"SMOOTH" CASCALOITE
24" BOX, 1.5" CALIP. (MULTI) 4T, 3.5W
 - LARGE SHRUBS**
 - TECOMA ORANGE JUBILEE
ORANGE JUBILEE
5 GALLON
 - DODONAEA VISCOSA
GREEN-HOP BUSH
5 GALLON
 - MEDIUM SHRUBS**
 - EREMOPHILA MACULATA
VALERINE (MAU) BUSH
5 GALLON
 - ACCENTS**
 - HEPHERALOE PARVIFLORA
RED TUCCA
5 GALLON
 - MUEHLENBERGIA REGAL MIST
REGAL MIST DEER GRASS
5 GALLON
 - DASYLIRION LONGISSIMA
TOOTHLESS DESERT SPOON
5 GALLON
 - GROUND COVER**
 - LANIANA MONTEVIDENSIS
"GOLD MOUND"
1 GALLON
 - LANIANA MONTEVIDENSIS
TRAILING PURPLE
1 GALLON
 - EREMOPHILA GLABRA
"MIDNIGHT GOLD"
5 GALLON
 - INSET MATERIALS**
 - 1/2" SCREENED ROCK PROS CARREL
DECOMPOSED GRANITE
2" DEPTH IN ALL LANDSCAPE AREAS
 - TURF**
 - MID-RICH
TURF
500



CITY OF SCOTTSDALE LANDSCAPE NOTES:

- AN AUTOMATIC IRRIGATION SYSTEM WILL BE INSTALLED GUARANTEEING 100% COVERAGE TO ALL LANDSCAPE AREAS.
- ALL LANDSCAPE AREAS WILL BE TOP-DRESSED WITH A 2" DEPTH OF DECOMPOSED GRANITE.
- PROVIDE 8% SLOPE AWAY FROM WALK OR CURB FOR 5' ALONG ALL STREETS.
- ALL RIGHT-OF-WAYS ADJACENT TO THIS PROPERTY SHALL BE LANDSCAPED AND MAINTAINED BY THE PROPERTY OWNER.
- ANY EXISTING LANDSCAPE MATERIALS INCLUDING TREES DAMAGED OR DESTROYED AS A RESULT OF THIS CONSTRUCTION SHALL BE REPLACED TO THE SATISFACTION OF CITY STAFF, WITH LIKE KIND AND SIZE PRIOR TO RECEIVING A CERTIFICATE OF OCCUPANCY.
- AREAS WITHIN THE SIGHT DISTANCE TRIANGLES IS TO BE CLEAR OF LANDSCAPING, SIGNS, OR OTHER VISIBILITY OBSTRUCTIONS WITH A HEIGHT GREATER THAN 1'-0". TREES WITHIN THE SAFETY TRIANGLE SHALL HAVE A CANOPY THAT BEGINS AT 8 FEET IN HEIGHT UPON INSTALLATION. ALL HEIGHTS ARE MEASURED FROM NEAREST STREET LINE ELEVATION.
- ALL RIGHT-OF-WAY ADJACENT TO THIS PROPERTY SHALL BE LANDSCAPED AND MAINTAINED BY THE PROPERTY OWNER.
- ALL SLOPES ON SITE ARE 4:1 MAX.
- NO TURF AREAS ARE TO BE PROVIDED.
- SEE ARCHITECTURAL SITE PLAN FOR SETBACK DIMENSIONS.
- SEE ARCHITECTURAL FOR SITE LIGHTING LOCATIONS. SEE ELECT. DRAWINGS FOR ALL LIGHTING SPECIFICATIONS.
- SEE ARCHITECTURAL FOR SITE WALL ELEVATIONS, COLORS
- SEE CIVIL DRAWINGS FOR ALL RETENTION AREAS, SECTIONS, AND SLOPE RATIOS.
- SEE ARCHITECTURAL FOR BIKE RACK DETAILS.
- ALL SIGNS REQUIRE SEPARATE APPROVALS & PERMITS.
- "SETBACK ALL SPRAY & STREAM TYPE IRRIGATION HEADS 1'-0" FROM BACK OF CURB OR SIDEWALK TO REDUCE OVER SPRAY".
- A MINIMUM 50 PERCENTAGE (UNLESS OTHERWISE STIPULATED BY THE DEVELOPMENT REVIEW BOARD, AND/OR THE ZONING ORDINANCE REQUIREMENTS) OF THE PROVIDED TREES SHALL BE MATURE TREES, PURSUANT TO THE CITY OF SCOTTSDALE'S ZONING ORDINANCE ARTICLE X, SECTION 10.301, AS DEFINED IN THE CITY OF SCOTTSDALE'S ZONING ORDINANCE ARTICLE III, SECTION 3.100.
- A SINGLE TRUNK TREE'S CALIPER SIZE, THAT IS TO BE EQUAL TO OR LESS THAN 4-INCHES, SHALL BE DETERMINED BY UTILIZING THE SMALLEST DIAMETER OF THE TRUNK 6-INCHES ABOVE FINISHED GRADE ADJACENT TO THE TRUNK.
- A TREE CALIPER SIZE, FOR SINGLE TRUNK TREES WHICH HAVE A DIAMETER GREATER THAN 4-INCHES, SHALL BE DETERMINED BY UTILIZING THE SMALLEST DIAMETER OF THE TRUNK 12-INCHES ABOVE FINISHED GRADE ADJACENT TO THE TRUNK.
- A MULTI TRUNK TREE'S CALIPER SIZE IS MEASURED AT 6-INCHES ABOVE THE LOCATION THAT THE TRUNK SPLITS ORIGINATES, OR 6-INCHES ABOVE FINISHED GRADE OF ALL TRUNKS ORIGINATE FROM THE SOIL.
- RETENTION/DETENTION BASINS SHALL BE CONSTRUCTED SOLELY FROM THE APPROVED CIVIL PLANS. ANY ALTERATION OF THE APPROVED DESIGN (ADDITIONAL FILL, BOULDERS, ETC.) SHALL REQUIRE ADDITIONAL FINAL PLANS STAFF REVIEW AND APPROVAL.
- NO LIGHTING IS APPROVED WITH THE SUBMITTAL.
- THE LANDSCAPE SPECIFICATION SECTION(S) OF THESE PLANS HAVE NOT REVIEWED AND SHALL NOT BE A PART OF THE CITY OF SCOTTSDALE'S APPROVAL.
- NEW LANDSCAPING, INCLUDING SALVAGED PLANT MATERIAL, AND LANDSCAPING INDICATED TO REMAIN, WHICH IS DESTROYED, DAMAGED, OR EXPIRES DURING CONSTRUCTION SHALL BE REPLACED WITH LIKE SIZE, KIND, AND QUALITY PRIOR TO THE ISSUANCE OF THE CERTIFICATE OF OCCUPANCY / LETTER OF ACCEPTANCE TO THE SATISFACTION OF THE INSPECTION SERVICES STAFF.

CITY OF SCOTTSDALE GREEN BUILDING NOTES:

CITY OF SCOTTSDALE
I₉CC AMENDED SECTION 601.3.1.2

IRRIGATION SYSTEMS

1. SHALL BE BASED ON HYDROZONES. TURFGRASS AREAS SHALL BE ON THEIR OWN IRRIGATION STATIONS. TREES IN TURFGRASS SHALL HAVE A SEPARATE DRIP IRRIGATION ZONE.
2. SHALL HAVE BACKFLOW PREVENTION IN ACCORDANCE WITH CITY PLUMBING CODE (IPC).
3. SHALL HAVE A MASTER VALVE ON MUNICIPALLY SUPPLIED WATER SOURCES THAT ALLOWS PRESSURIZATION OF THE IRRIGATION MAINLINE ONLY WHEN IRRIGATION IS SCHEDULED. THE MASTER VALVE SHALL BE INSTALLED IMMEDIATELY DOWNSTREAM OF THE BACK FLOW PREVENTION DEVICE.
4. SHALL HAVE AN ISOLATION VALVE INSTALLED IMMEDIATELY UPSTREAM OF EACH IRRIGATION CONTROL VALVE.

IRRIGATION TURFGRASS SPRINKLERS

1. SHALL NOT SPRAY WATER DIRECTLY ON BUILDINGS OR HARDSCAPE AREA.
2. SHALL BE PROHIBITED ON LANDSCAPE AREAS HAVING ANY DIMENSION LESS THAN 8FT.
3. SHALL BE LIMITED TO USE WITH TURFGRASS.
4. SPRINKLER HEADS INCLUDING ROTORS, HEADS WITH ROTATING AND FIXED SPRAY NOZZLES SHALL CONTAIN PRESSURE REGULATING SPRINKLER BODIES.

LANDSCAPE EMITTERS

1. THE DRIP IRRIGATION CONTROL VALVE SHALL BE EQUIPPED WITH A PRESSURE REGULATOR AND A CLEANABLE WYE STRAINER FILTER.
2. AT THE END OF EACH LATERAL, A FLUSH CAP SHALL BE INSTALLED IN A SIX (6) INCH ROUND PIT BOX.
3. DRIP EMITTERS SHALL BE OF PRESSURE COMPENSATING TYPE.

IRRIGATION CONTROLLERS

- ALL IRRIGATION SYSTEMS SHALL USE A WEATHER BASED SMART IRRIGATION CONTROLLER THAT IS WATERWISE, LABELED OR EQUIVALENT AND CAPABLE OF FREQUENCY ADJUSTMENT AND DAY EXCLUSION. THE FOLLOWING SETTINGS AND SCHEDULE FOR THE IRRIGATION CONTROL SYSTEM SHALL BE POSTED ON OR ADJACENT TO THE CONTROLLER:
1. PRECIPITATION RATE OF EACH IRRIGATION STATION.
 2. PLANT FACTORS FOR EACH HYDROZONE.
 3. SOIL TYPE.
 4. RAIN SENSOR SETTINGS.
 5. PEAK DEMAND SCHEDULE, INCLUDING RUN TIMES, CYCLE STARTS, AND SOAK TIMES.
 6. MAXIMUM RUN TIMES TO PREVENT WATER RUNOFF AND STANDING WATER.
 7. GALLONS PER MINUTE FOR EACH IRRIGATION STATION.

LANDSCAPE PLAN APPROVED

CITY OF SCOTTSDALE

CASE NUMBER: APPROVED DATE: CONSTRUCTION AND INSTALLATION SHALL BE IN ACCORDANCE WITH THE PLAN AND ANY AND ALL DEVIATIONS WILL REQUIRE REAPPROVAL. LANDSCAPE INSTALLATION TO BE APPROVED BY CITY OF SCOTTSDALE INSPECTION SERVICES BEFORE CERT. OF OCCUPANCY IS ISSUED.

Case No: 00 - DR - 2024



T.J. McQUEEN & ASSOCIATES, INC.

LANDSCAPE ARCHITECTURE
URBAN DESIGN
SITE PLANNING
10446 N. 74th Street, Suite 150
Scottsdale, Arizona 85258
P: (602) 981-4200
F: (602) 981-4203
EMAIL: tmcqueen@tjma.com



project: THE ARDEN SCOTTSDALE
500 NORTH MILLER ROAD
SCOTTSDALE, ARIZONA 85257

reviewed:

job #:

2407

date:

01.23.25

contents:

LANDSCAPE PLAN
HARDSCAPE PLAN

sheet No:

La.01