



October 25, 2024

Nationwide Realty Investors' Cavasson, a 134-acre mixed-use development in Scottsdale, includes approximately 1.8 million square feet of market leading commercial office space, 1,600 multifamily units, hotels, retail, restaurants, services and amenities. The walkable community includes tree-lined sidewalks, bike paths, green spaces and community gathering places with ample parking. The project includes an infrastructure investment of approximately \$30 million—delivering new roads, sidewalks, improved connectivity and flood mitigation improvements benefiting the property and significant acreage surrounding the development. Cavasson is located along the north side of Loop 101, at Hayden Road.

This development review package presents Cavasson Retail North, a single-story 12,800 SF building of restaurant and retail suites, and a two-story 37,000 SF Medical Office Building with parking, landscape, and pedestrian pathways linking adjacent sites.

High quality design is exemplary of the character of the development. Evocative materials in natural tones and textures seamlessly blend architecture and environment. Substantial use of glass on both buildings carries natural light to all parts of the interior and frames views of the McDowell Mountains to the east. Well-proportioned overhangs on the east and west retail elevations protect the nearly all-glass facades from harsh solar exposure and shade exterior gathering areas. Unifying the overall design of the Cavasson development, the retail and MOB buildings share select stone and metal exterior materials with existing buildings, while establishing unique identities through smart application of finish materials, colors and textures. Common site wall, landscape and hardscape materials and design strategies further connect building sites across Cavasson.

The project site is accessed via full-movement ingress-egress drives along its northern and western boundaries, and internal circulation pathways are easily discerned by service vehicles and patrons alike. Pedestrian routes are numerous and provided in contrasting featured materials that aid wayfinding and contribute to compliance with solar reflectance requirements of the IgCC. Landscape islands at the parking lot are well-appointed to ensure asphalt areas are shaded, and to enhance views within the site. Electric Vehicle Parking (current and future) is provided in compliance with Scottsdale Electric Vehicle Infrastructure requirements.

All surface accessible utility and building service equipment is concealed within the architecture, buried within landscape beds, or blended into hardscape and landscape screening elements. In anticipation of roof-mounted mechanical and kitchen equipment to be installed by future tenant improvements at the retail building, screened rooftop areas are ample and integrated into the building's core architecture.

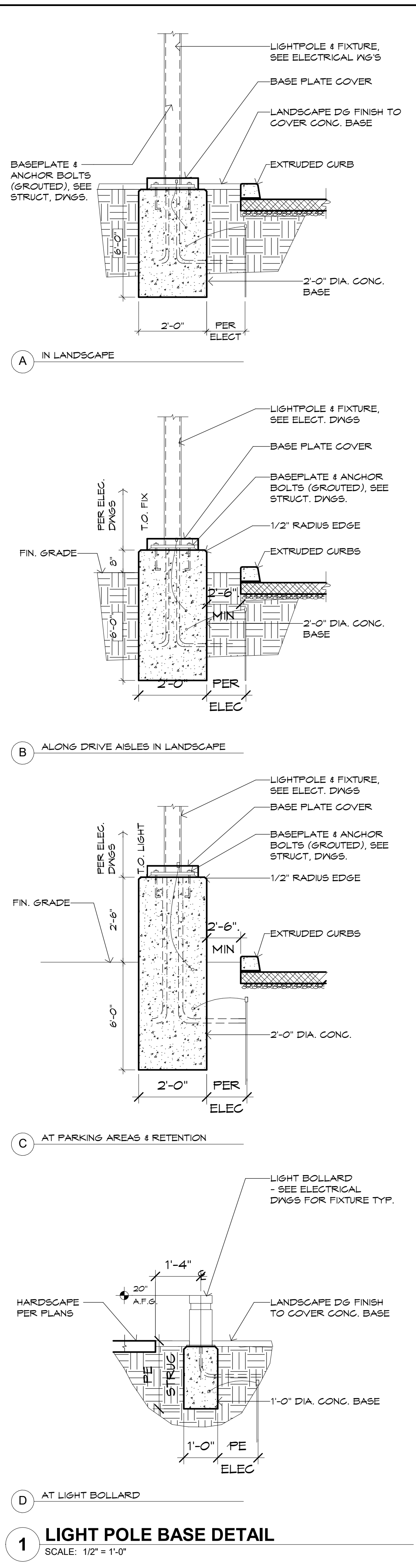
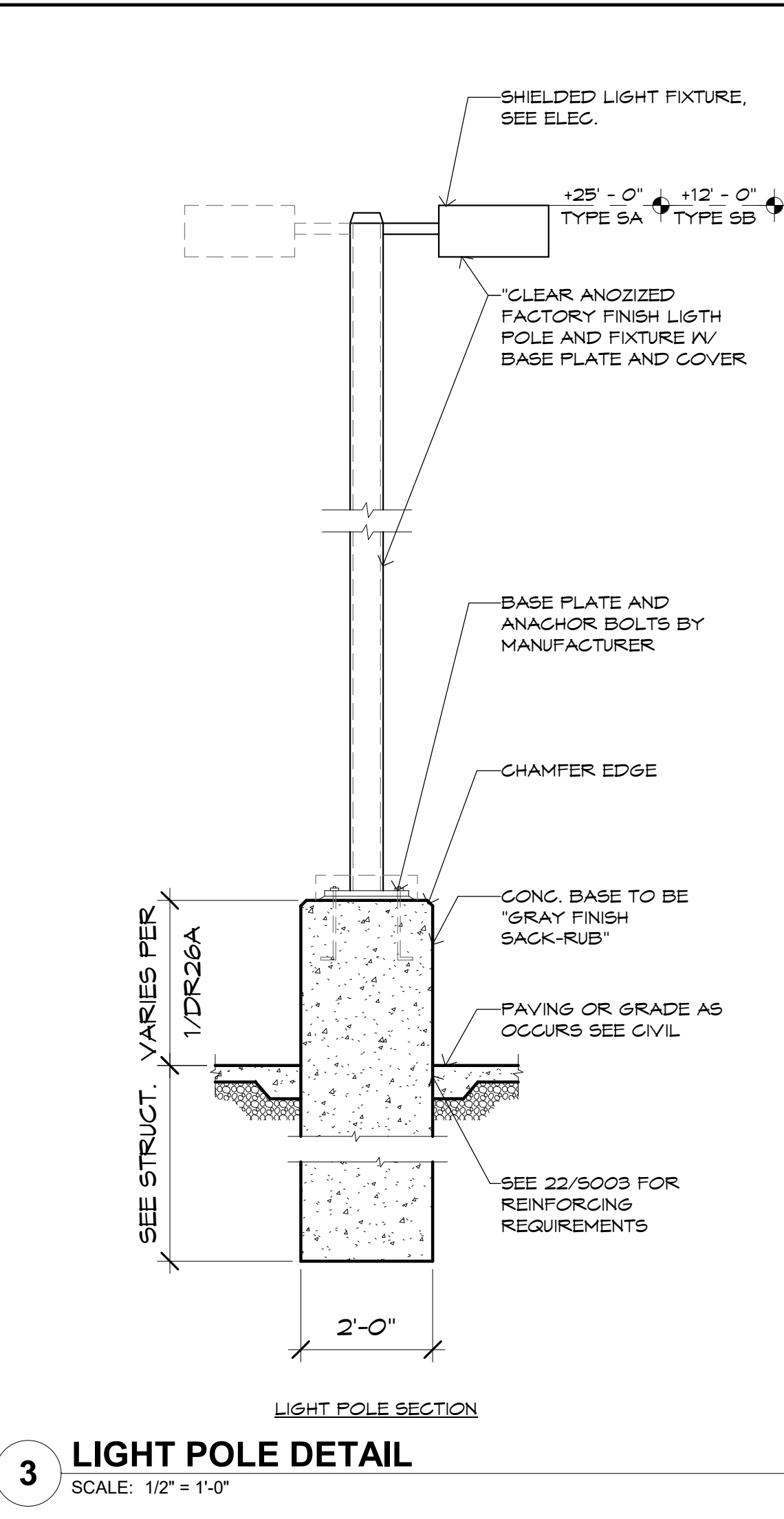
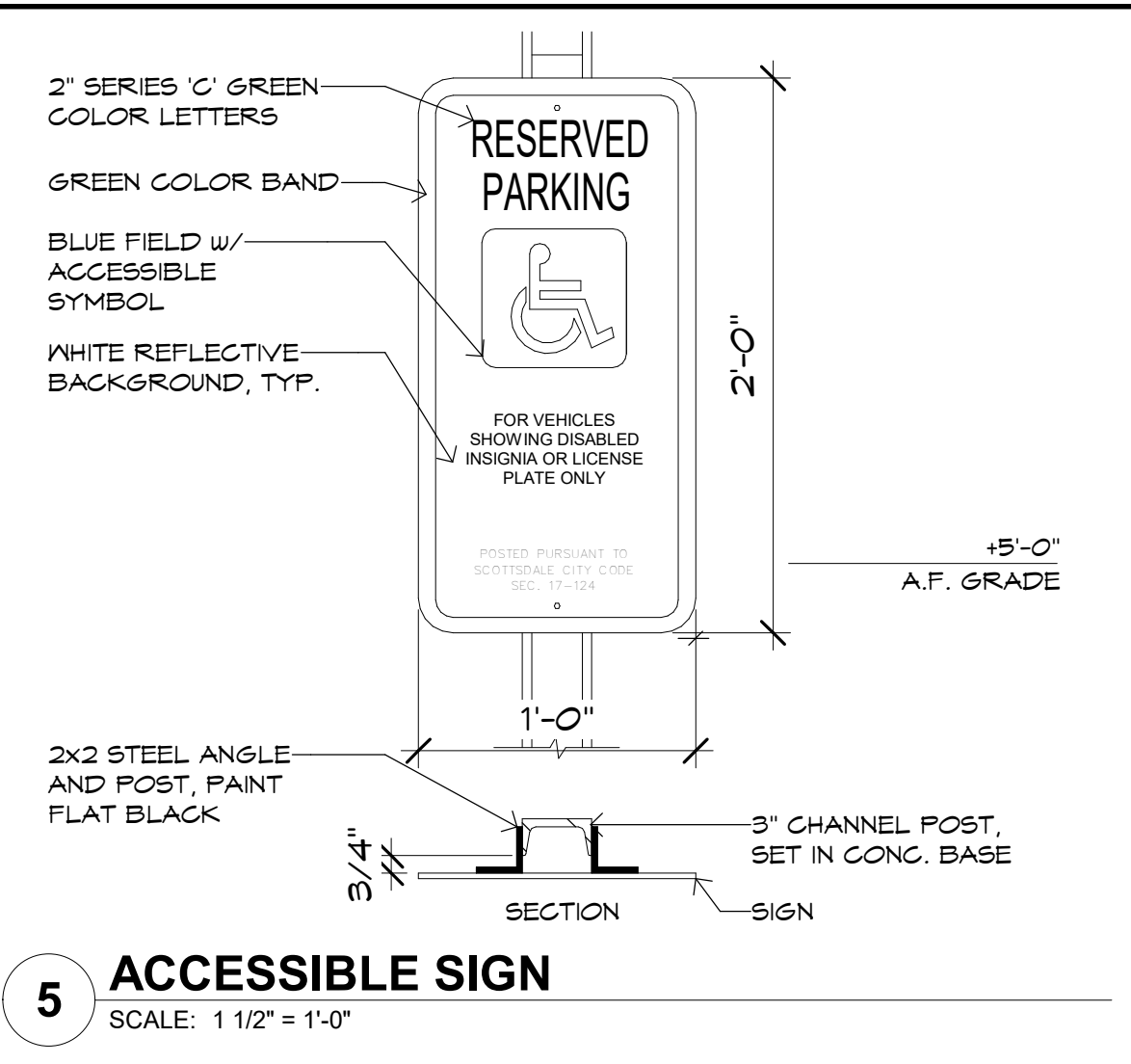
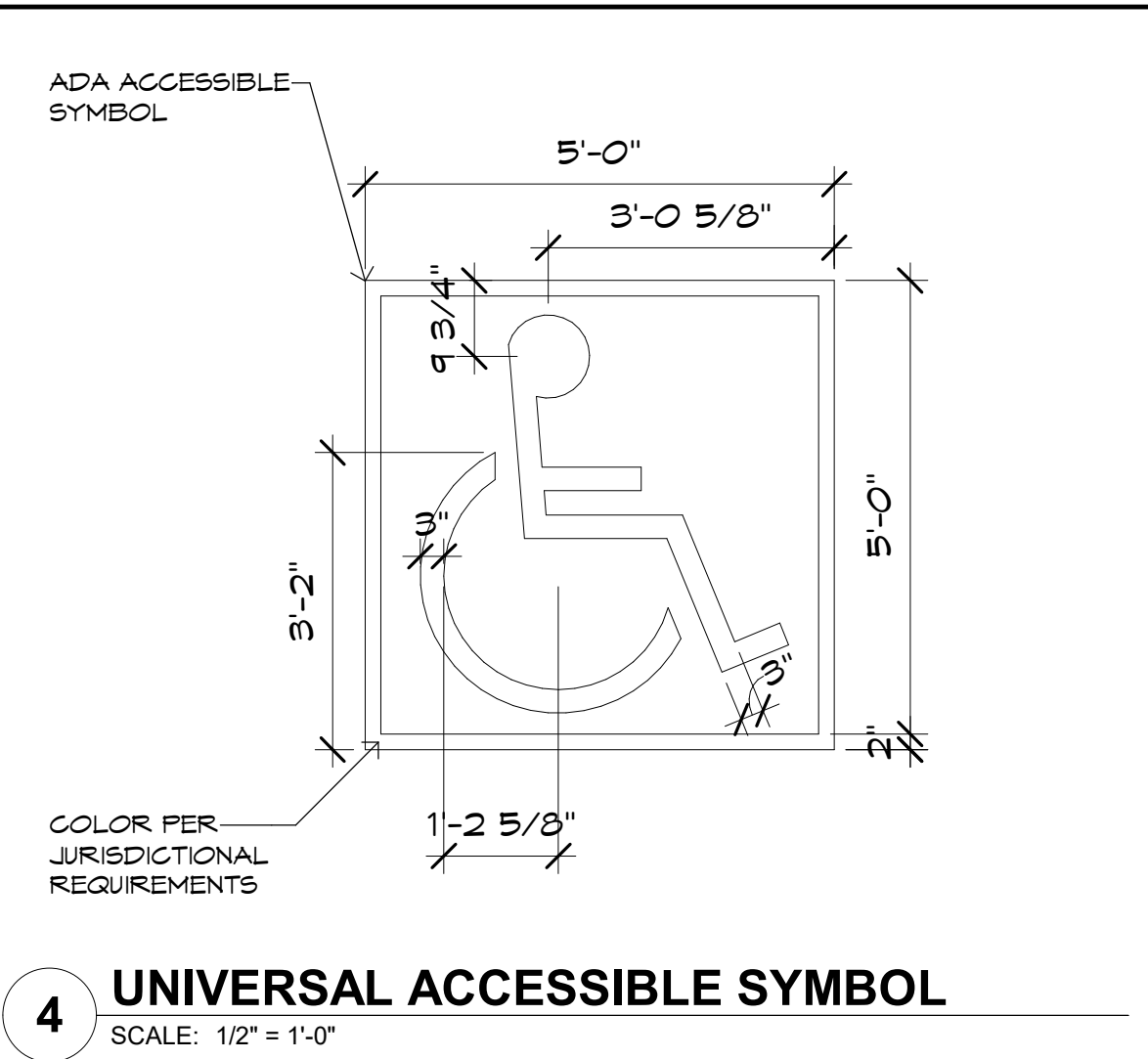
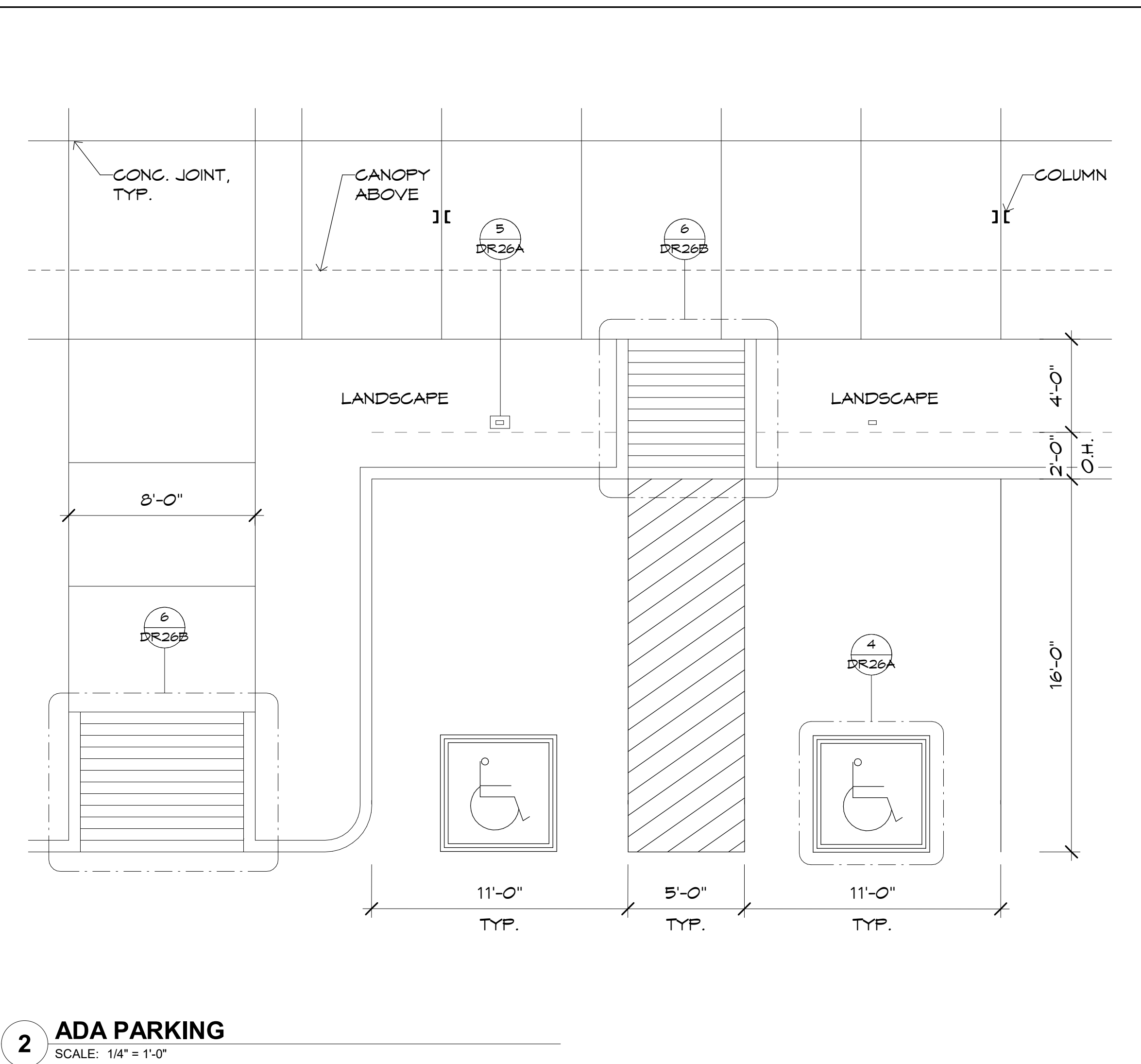
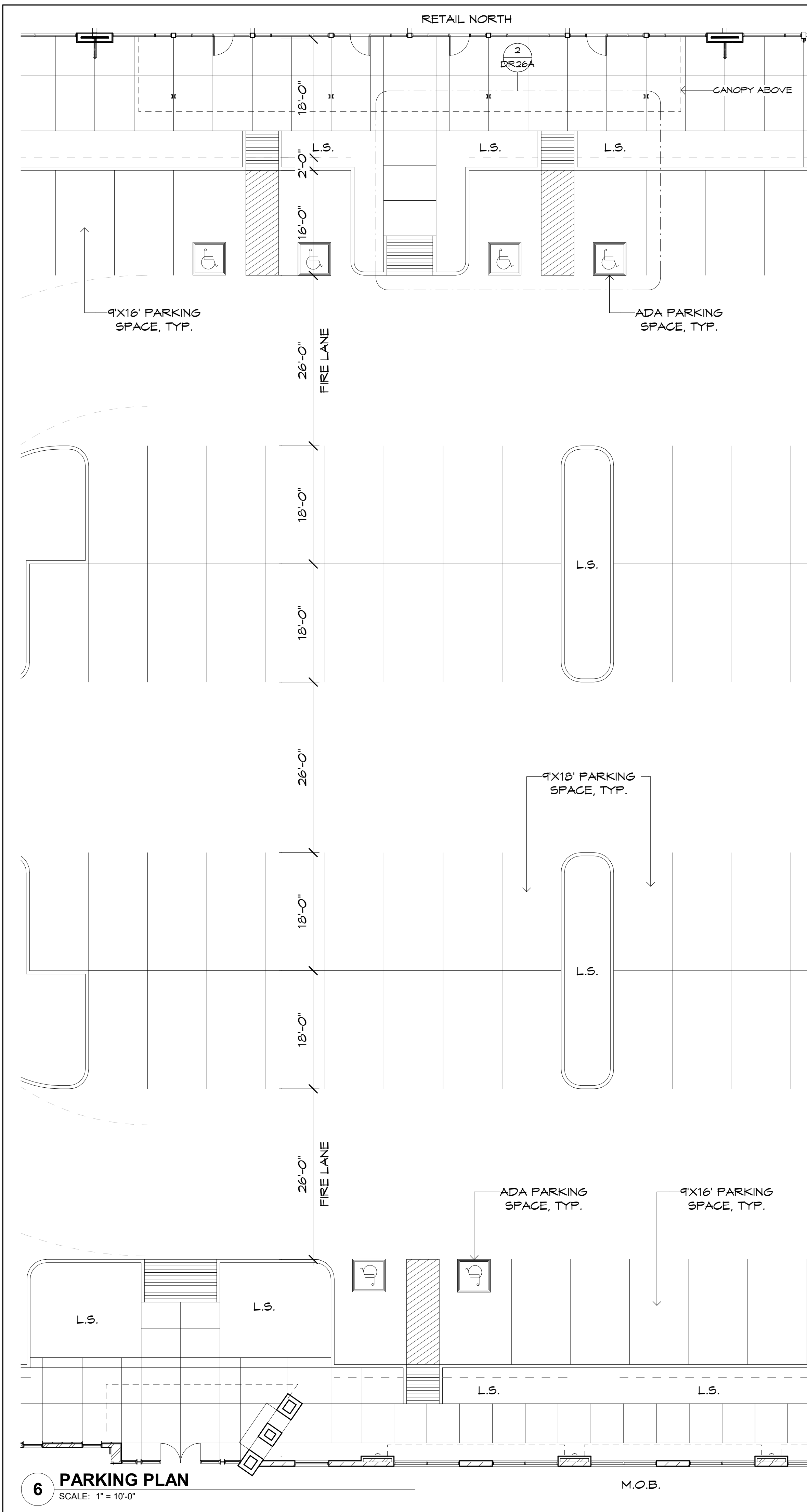
There are no specific tenant commitments for the buildings.

This proposed development complies with the General Plan, Zoning Ordinance requirements, Commercial Design Guidelines, Design Standards and Policies Manual and other applicable standards of the City of Scottsdale.

James K Rost
Vice President, Development & Construction
Nationwide Realty Investors, LTD

Nationwide Realty Investors
375 N. Front Street, Suite 200
Columbus, OH 43215

Tel: 614-857-2330
Fax: 614-857-2346
www.nationwiderealtyinvestors.com



Bgd
Butler Design Group Inc.
architects & planners
5013 East Washington St. #100
Phoenix, Arizona 85034
Phone 602-957-1800

PRELIMINARY
NOT FOR
CONSTRUCTION

OWNERSHIP OF INSTRUMENTS OF SERVICE
All reports, plans, specifications, computer files, third party, notes and other documents and instruments prepared by the design professional are the property of the design professional. The design professional shall retain all common law, statutory and other related rights, including the copyright therein.

Nationwide

CAVASSON
Retail North & M.O.B.
Scottsdale, Arizona

Current Submittal: DRB 10/25/2024
Revisions:

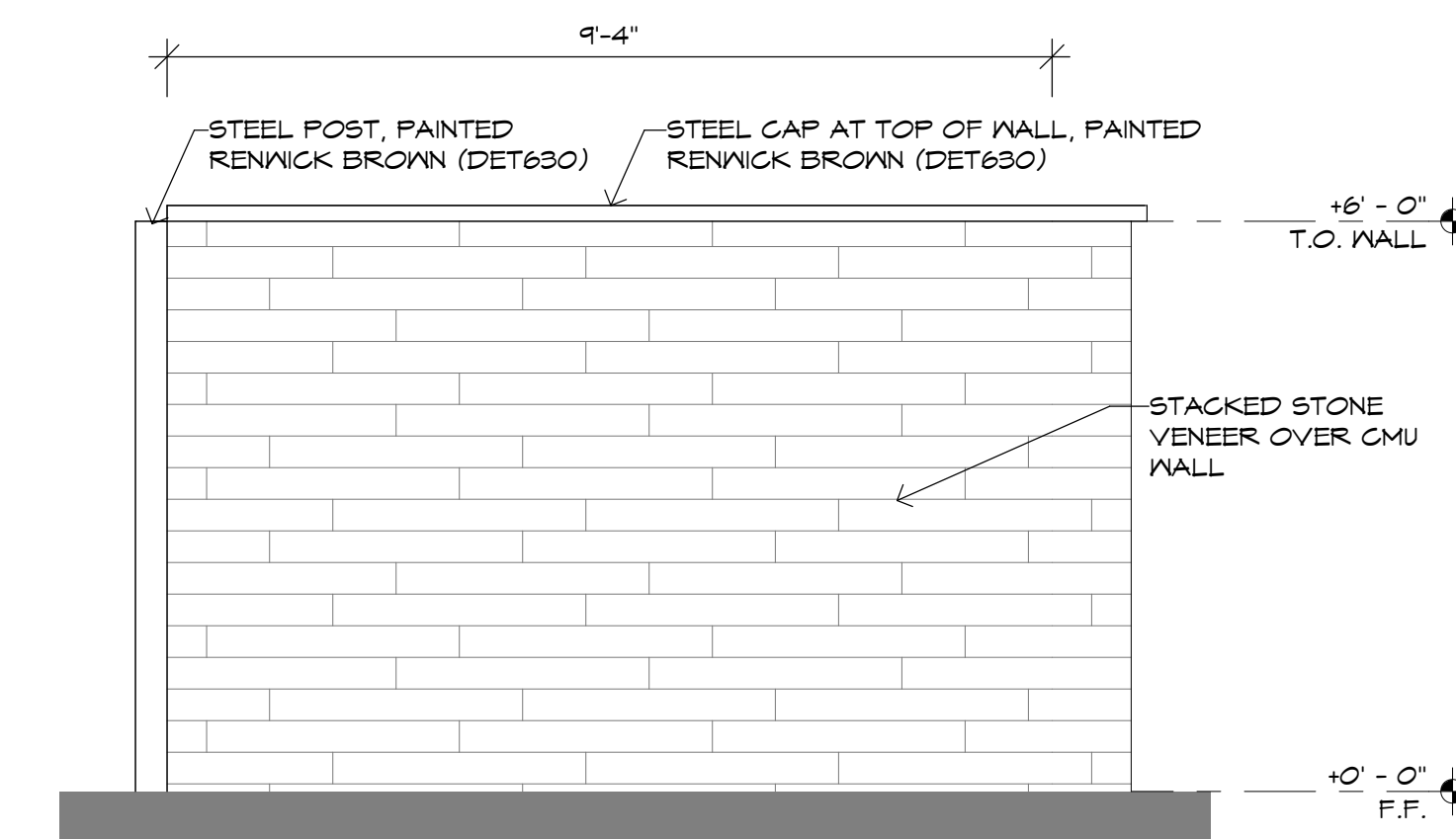
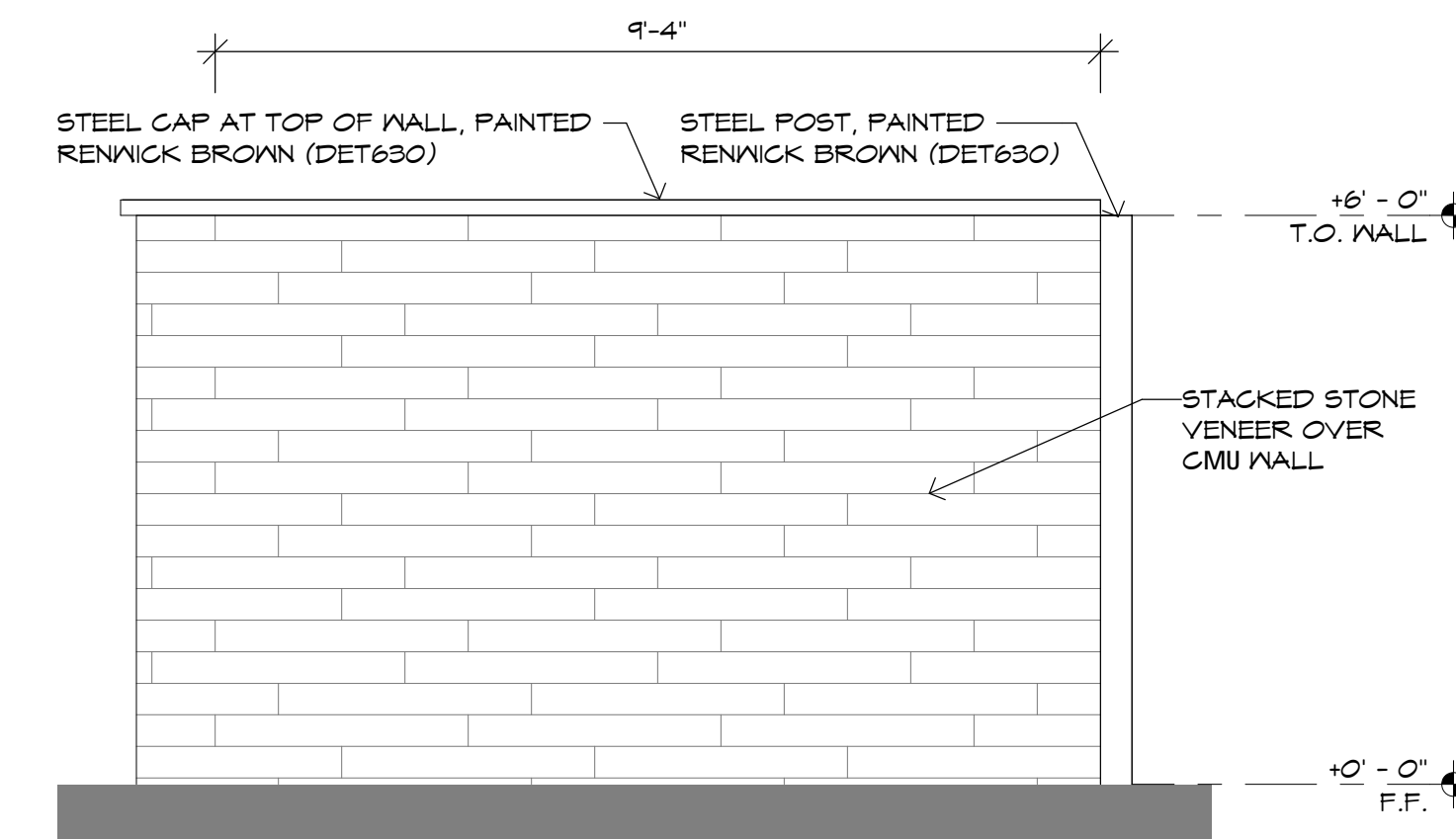
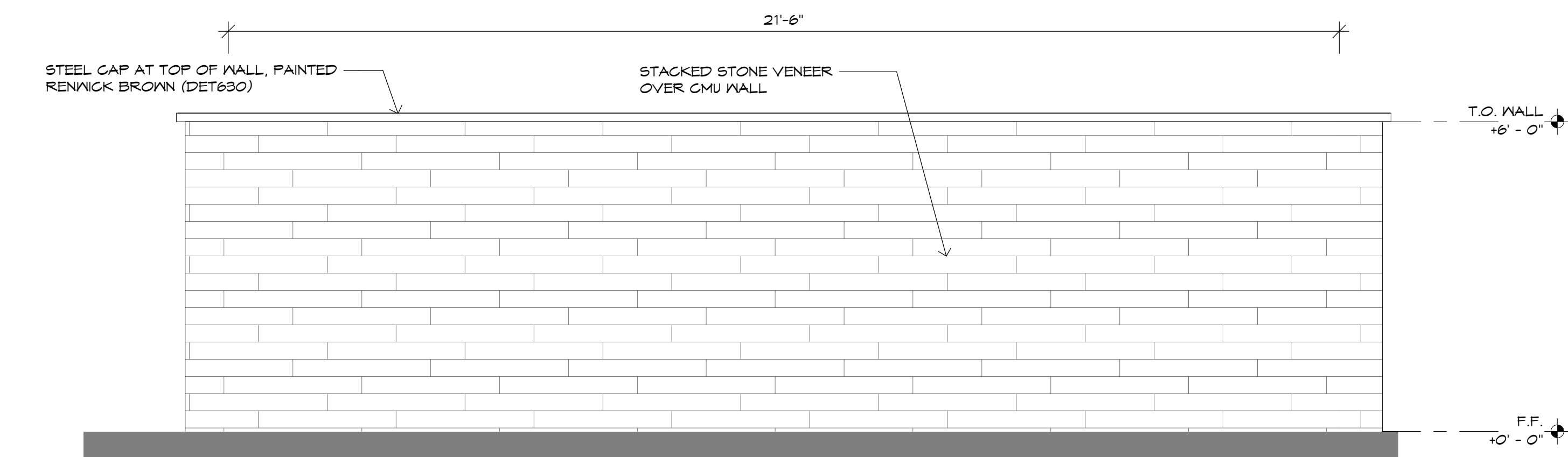
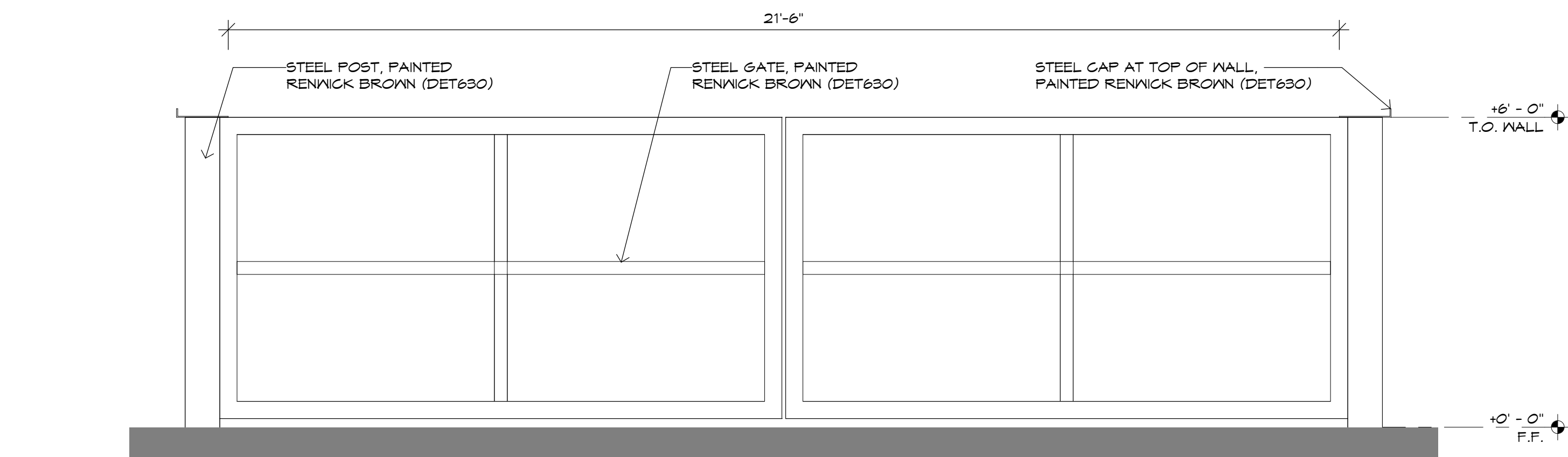
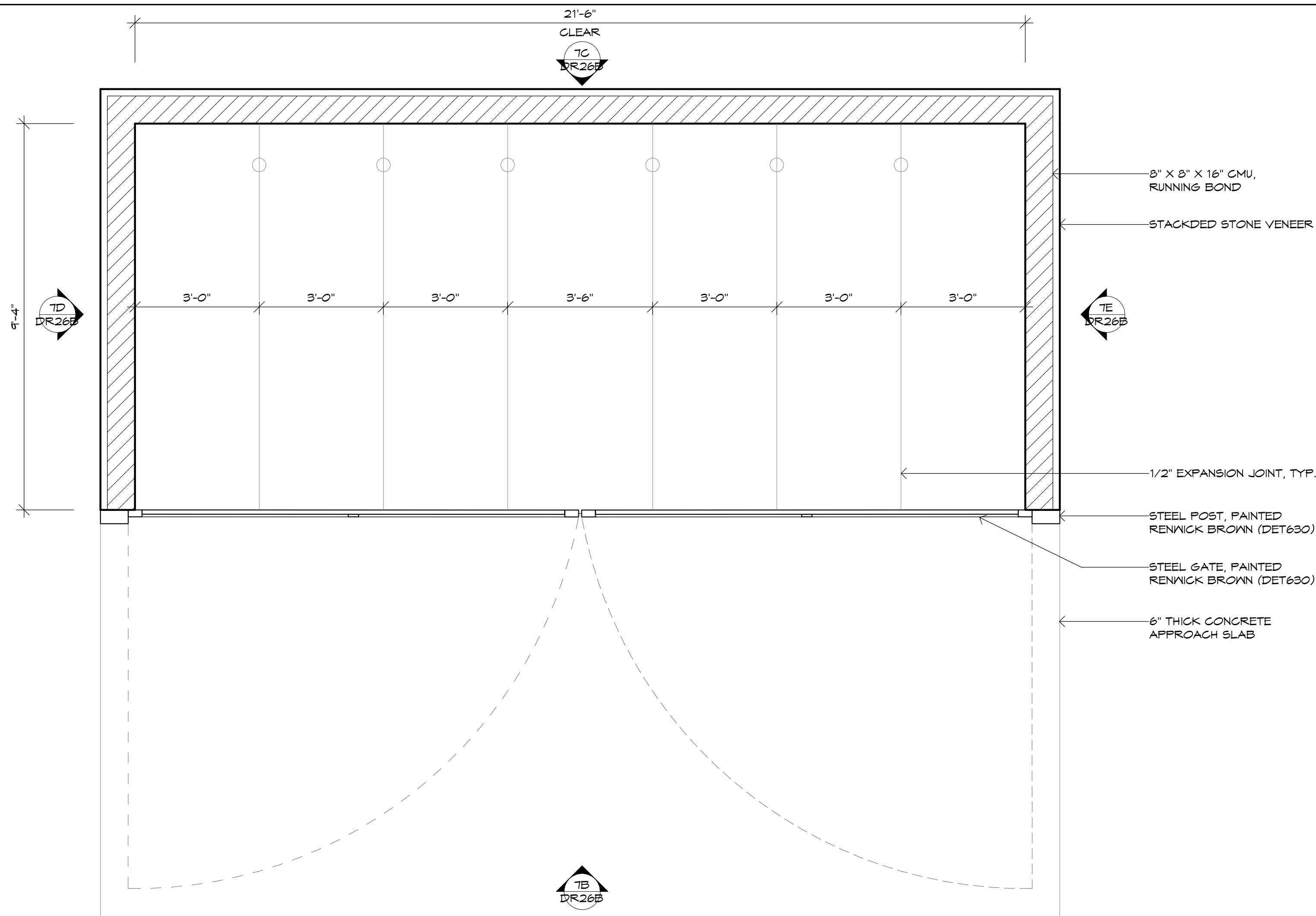
Project No.: 15148
Issue Date: 10/25/2024
Drawn By: --
Project Manager: --
Title: SITE DETAILS

DR26A

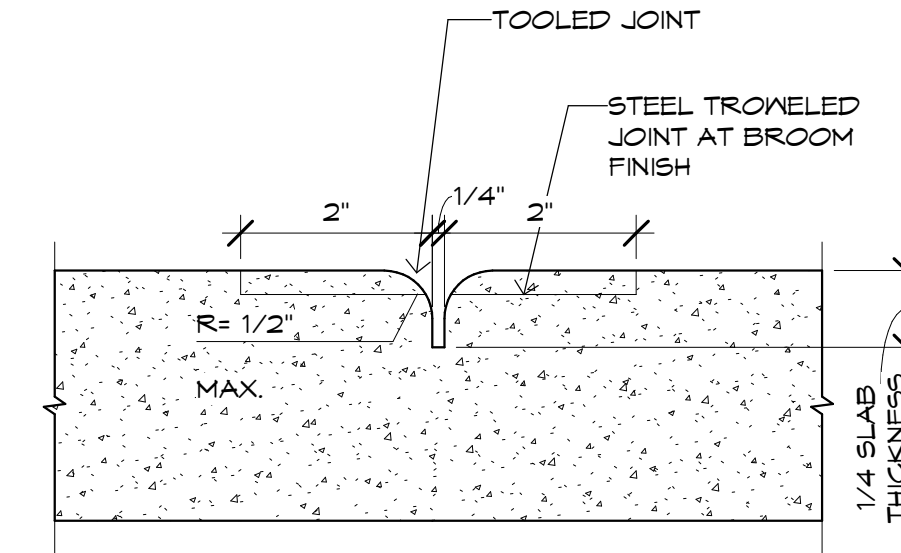
34-DR-2024
10/31/2024

PRELIMINARY
NOT FOR
CONSTRUCTION

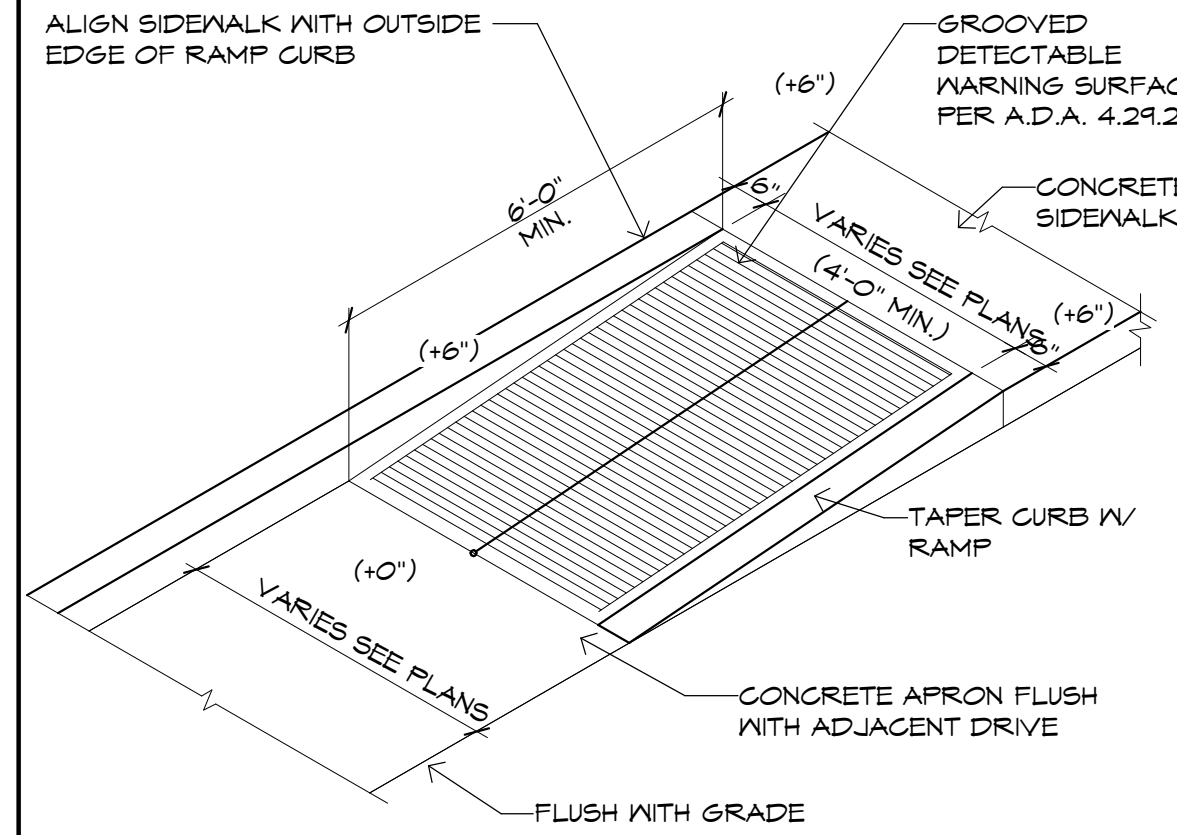
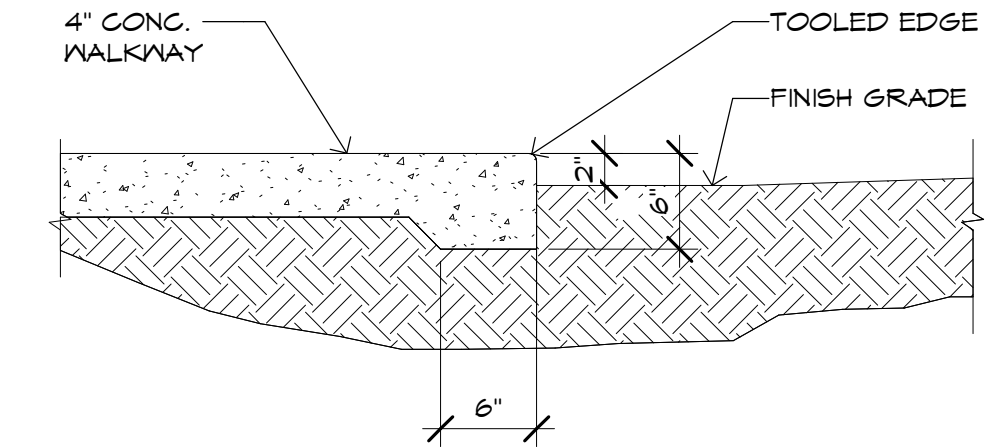
OWNERSHIP OF INSTRUMENTS OF SERVICE
All reports, plans, specifications, computer files, third data, notes and other documents and instruments prepared by the design professional herein shall remain the property of the design professional. The design professional shall retain all common law, statutory and other related rights, including the copyright therein.



5 TOOLED CONCRETE JOINT
SCALE: 6" = 1'-0"



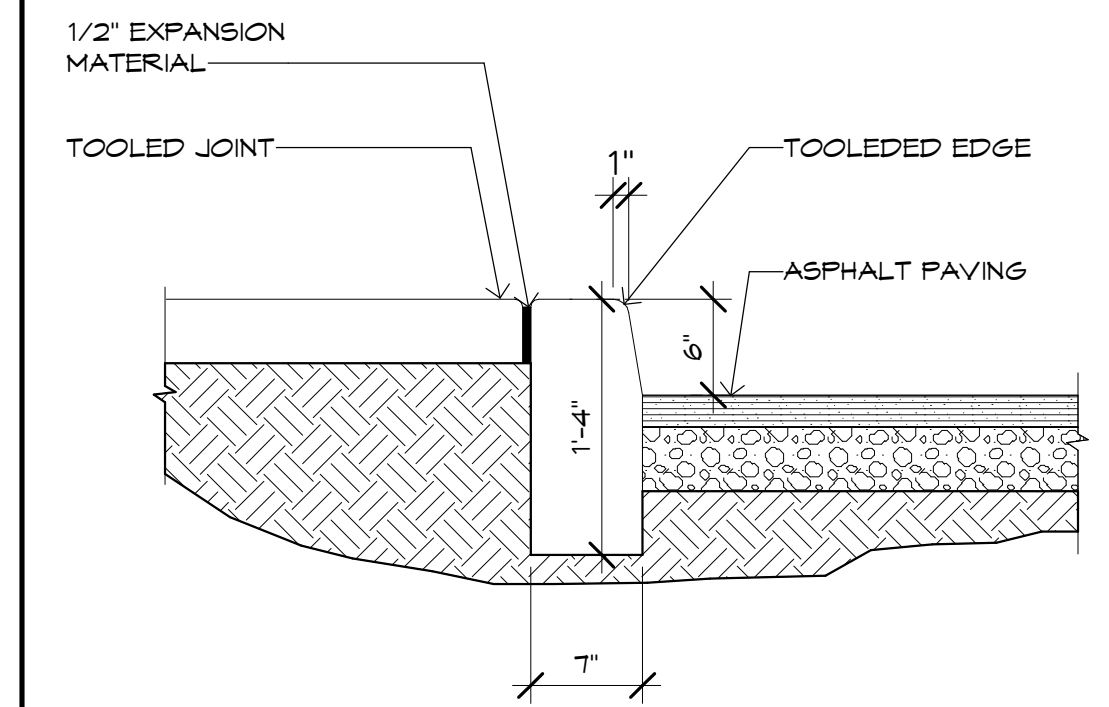
1 SIDEWALK AT GRADE
SCALE: 1" = 1'-0"



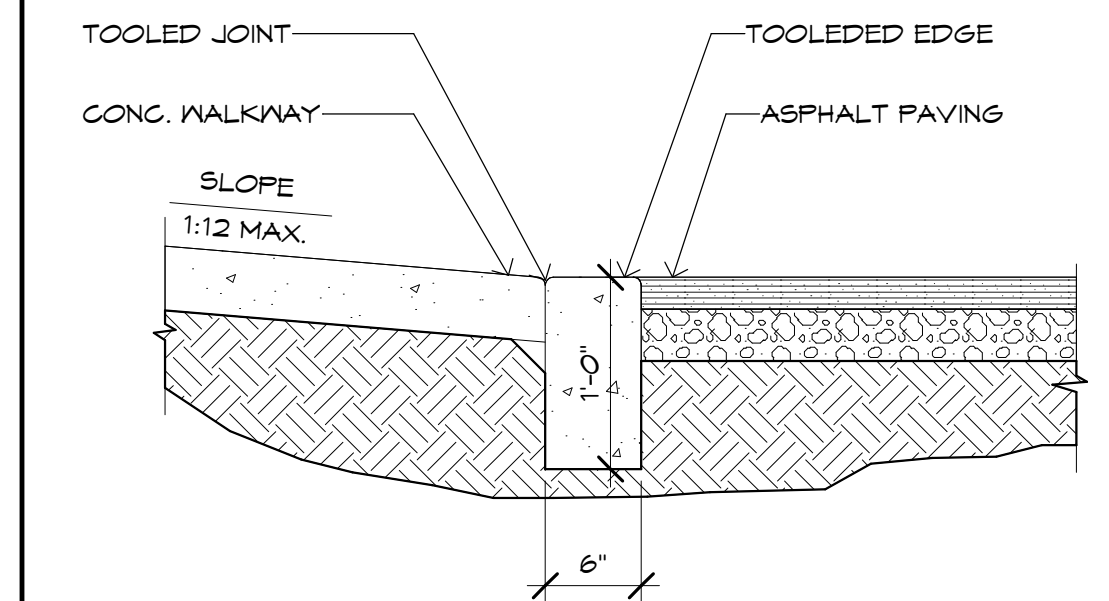
6 ACCESSIBLE RAMP
SCALE: 3/8" = 1'-0"

2 SIDEWALK AT ASPHALT
SCALE: 1" = 1'-0"

NOTE: SEE CIVIL DRAWING FOR ADD'L. INFORMATION AND CURB WITH GUTTER LOCATIONS AND DETAILS

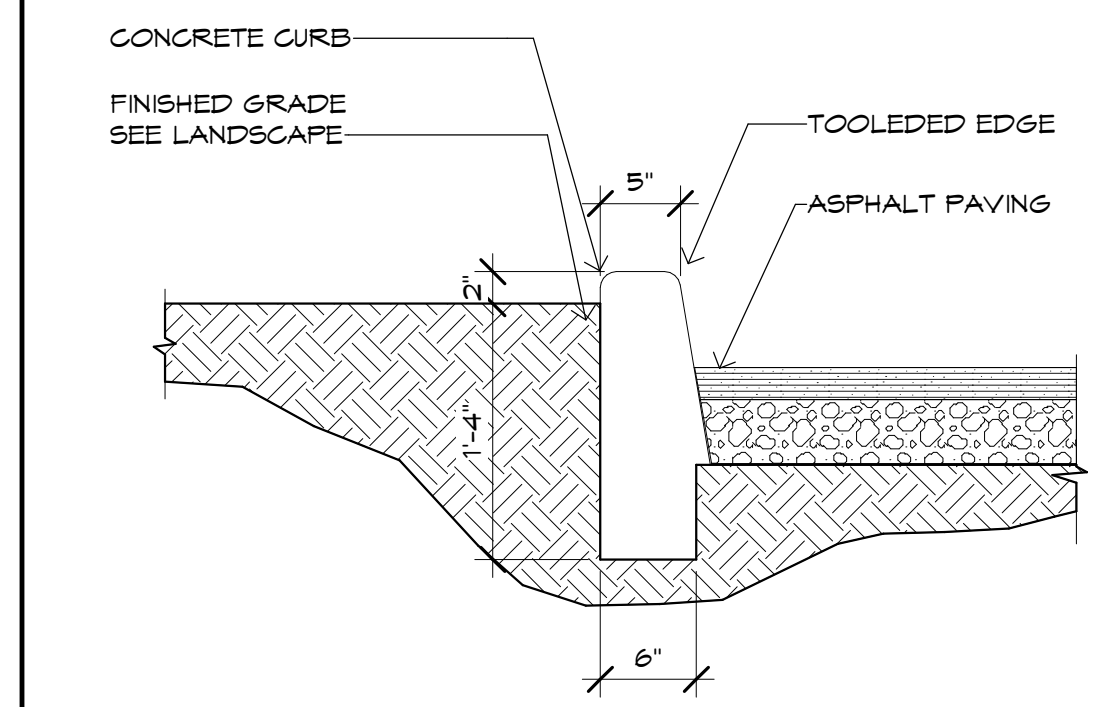


NOTE: SEE CIVIL DRAWING FOR ADD'L. INFORMATION AND CURB WITH GUTTER LOCATIONS AND DETAILS



3 CAST IN PLACE CURB
SCALE: 1" = 1'-0"

NOTE: SEE CIVIL DRAWING FOR ADD'L. INFORMATION AND CURB WITH GUTTER LOCATIONS AND DETAILS



7 DOUBLE REFUSE ENCLOSURE (PER 2147-1)
SCALE: 1/2" = 1'-0"

4 LANDSCAPE AT RAISED CURB
SCALE: 1" = 1'-0"

PRELIMINARY
NOT FOR
CONSTRUCTION

OWNERSHIP OF INSTRUMENTS OF SERVICE
All reports, plans, specifications, computer files, hard data, notes and other documents and instruments prepared by the design professional herein shall remain the property of the design professional. The design professional shall retain all common law, statutory and other reserved rights, including the copyright therein.

CAVASSON

Retail North & M.O.B.
Scottsdale, Arizona

Current Submittal: DRB
10/25/2024

Revisions:

Project No.: 15148
Issue Date: 10/25/2024
Drawn By: --
Project Manager: --
Title: BUILDING ELEVATIONS

DR39A



1 EAST ELEVATION
SCALE: 1" = 10'-0"



2 NORTH ELEVATION
SCALE: 1" = 10'-0"



3 SOUTH ELEVATION
SCALE: 1" = 10'-0"



4 WEST ELEVATION
SCALE: 1" = 10'-0"

MATERIAL FINISH SCHEDULE

MARK	DESCRIPTION	COLOR / FINISH	MODEL	MANUFACTURER	COMMENTS
GLAZING					
GLO1	LOW-E GLAZING	CRYSTAL GREY	ISX 51/23	GUARDIAN GLASS	
MASONRY					
ST01	STONE VENEER	MOJAVE LEDGE STONE ---		SOLSTICE STONE	
METAL					
MTO1	METAL PANEL	COPPER PENNY	---	LORIN	
PAINT					
PT01	PAINTED EIFS	CALICO ROCK	DE6229	DUNN EDWARDS	
PT02	PAINTED METALS	DOWNPOUR	1010-5	PPG	
PT03	PAINTED METALS	MINK	DE6342	DUNN EDWARDS	

PRELIMINARY
NOT FOR
CONSTRUCTION

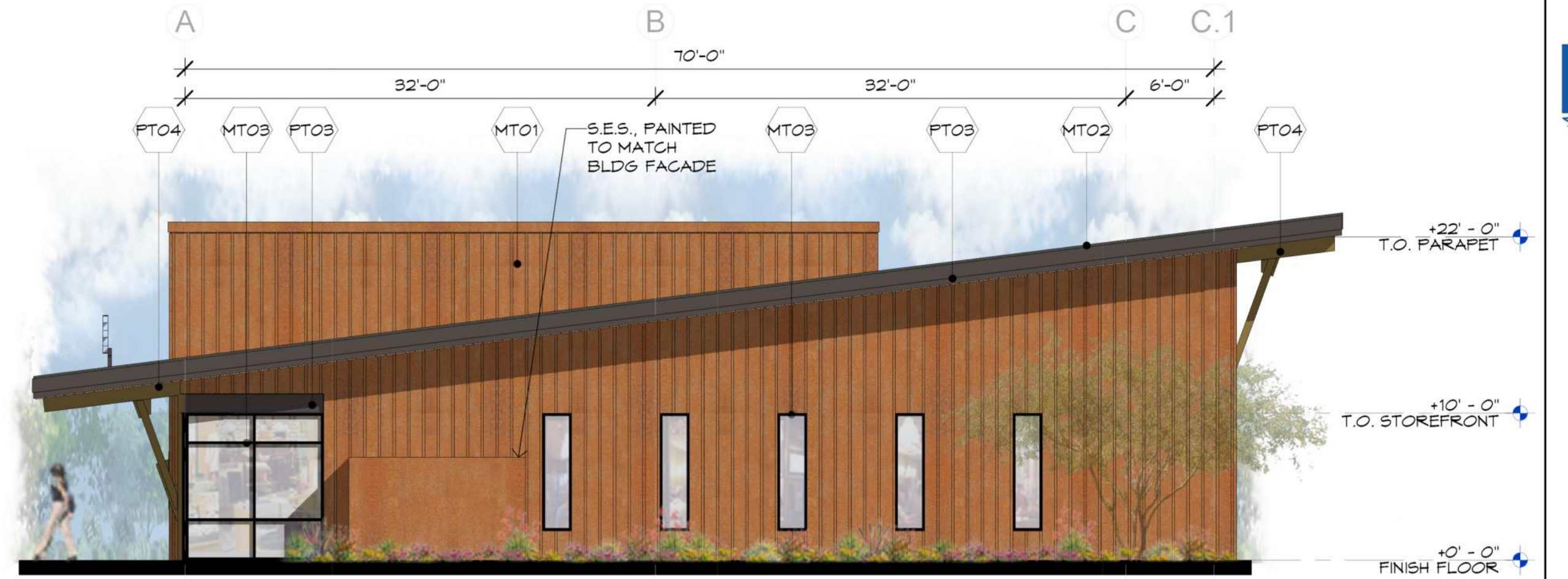
OWNERSHIP OF INSTRUMENTS OF SERVICE
All reports, plans, specifications, computer files, hard data, notes and other documents and materials prepared by the design professional shall remain the property of the design professional. The design professional shall retain all common law, statutory and other reserved rights, including the copyright therein.



1 WEST ELEVATION
SCALE: 1/8" = 1'-0"



2 NORTH ELEVATION
SCALE: 1/8" = 1'-0"



3 SOUTH ELEVATION
SCALE: 1/8" = 1'-0"



4 EAST ELEVATION
SCALE: 1/8" = 1'-0"

MATERIAL FINISH SCHEDULE

MARK	DESCRIPTION	COLOR / FINISH	MODEL	MANUFACTURER	COMMENTS
GLAZING					
GL01	LOW-E GLAZING	CRYSTAL GREY	SNX 51/23	GUARDIAN GLASS	
METAL					
MT01	METAL PANEL	COPPER PENNY	---	LORIN	
MT02	STANDING SEAM	STEEL	TBD	TBD	
MT03	ALUMINUM WINDOW FRAME SYSTEM	BLACK ANODIZED	AB7	ARCADIA	
PAINT					
PT02	PAINTED METALS	DOWNPOUR	1010-5	PPG	
PT03	PAINTED METALS	MINK	DE6392	DUNN EDWARDS	
PT04	PAINTED METALS	GOLDEN HARMONY	DE6168	DUNN EDWARDS	
WOOD					
W001	WOOD PANEL	WOOD	TBD	TBD	



Butler Design Group Inc.
architects & planners

5013 East Washington St. #100
Phoenix, Arizona 85034
Phone 602-957-1800

PRELIMINARY
NOT FOR
CONSTRUCTION

OWNERSHIP OF INSTRUMENTS OF SERVICE
All reports, plans, specifications, computer files, data, notes, models and other documents and instruments prepared by the design professional are the property of the design professional. The design professional shall retain all common law, statutory and other related rights, including the copyright therein.



CAVASSON

Retail North & M.O.B.
Scottsdale, Arizona

Current Submittal: DRB
10/25/2024

Revisions:

Project No.: 15148
Issue Date: 10/25/2024
Drawn By: --
Project Manager: --
Title:

PERSPECTIVES

DR41A

1 M.O.B. - LOOKING SOUTHWEST



Butler Design Group Inc.
architects & planners

5013 East Washington St. #100
Phoenix, Arizona 85034
Phone 602-957-1800

PRELIMINARY
NOT FOR
CONSTRUCTION

OWNERSHIP OF INSTRUMENTS OF SERVICE
All reports, plans, specifications, computer files, data, notes and other documents and drawings prepared by the design professional are the property of the design professional. The design professional shall retain all common law, statutory and other related rights, including the copyright therein.



CAVASSON

Retail North & M.O.B.
Scottsdale, Arizona

Current Submittal: DRB
10/25/2024

Revisions:

Project No.: 15148
Issue Date: 10/25/2024
Drawn By: --
Project Manager: --
Title:

PERSPECTIVES

DR41B

1 M.O.B. - LOOKING SOUTHEAST



Butler Design Group Inc.
architects & planners

5013 East Washington St. #100
Phoenix, Arizona 85034
Phone 602-957-1800

PRELIMINARY
NOT FOR
CONSTRUCTION

OWNERSHIP OF INSTRUMENTS OF SERVICE
All reports, plans, specifications, computer files, third party notes and
other documents and drawings prepared by the design professional
shall remain the property of the design professional. The design professional shall retain all common law,
statutory and other reserved rights, including the copyright therein.



CAVASSON

Retail North & M.O.B.
Scottsdale, Arizona

Current Submittal: DRB
10/25/2024

Revisions:

Project No.: 15148
Issue Date: 10/25/2024
Drawn By: --
Project Manager: --
Title:

PERSPECTIVES

1 RETAIL NORTH - LOOKING NORTHEAST

DR41C



Butler Design Group Inc.
architects & planners

5013 East Washington St. #100
Phoenix, Arizona 85034
Phone 602-957-1800

PRELIMINARY
NOT FOR
CONSTRUCTION

OWNERSHIP OF INSTRUMENTS OF SERVICE
All reports, plans, specifications, computer files, third party notes and
other documents and drawings prepared by the design professional
herein shall remain the property of the design professional. The design professional shall retain all common law,
statutory and other related rights, including the copyright therein.



CAVASSON

Retail North & M.O.B.
Scottsdale, Arizona

Current Submittal: DRB
10/25/2024

Revisions:

Project No.: 15148
Issue Date: 10/25/2024
Drawn By: --
Project Manager: --
Title:

PERSPECTIVES

1 RETAIL NORTH - LOOKING NORTHWEST

DR41D



PLANT MATERIALS LEGEND

Sym.	Plant Name	Size	Qty	Remarks
	<i>Acacia aneura</i> Mulga Acacia	36" box 38 box, 7.0'-9.0" High, 4.0'-6.0" Wide, 1.5-2.0 Caliper	39	ADWR
	<i>Caesalpinia cacalaco</i> 'Smoothie' Thornless Cassalote	36" box 38 box, 8.0'-10.0" High, 5.0'-6.0" Wide, 1.5-2.0 Caliper	2	
	<i>Prosopis velutina</i> Native Mesquite	36" box 38 box, 9.0'-11.0" High, 5.0'-6.0" Wide, 1.75-2.5 Caliper	4	
	<i>Quercus virginiana</i> Southern Live Oak	36" box 38 box, 10.0'-12.0" High, 5.0'-7.0" Wide, 1.75-2.5 Caliper	23	

Sym.	Plant Name	Size	Qty	Remarks
	<i>Ambrosia deltoidea</i> Triangle Leaf Bursage	5 gal.	35	
	<i>Bougainvillea</i> 'Rosenka' Rosenka Bougainvillea	5 gal.	23	
	<i>Calliandra californica</i> Red Fairy Duster	5 gal.	4	
	<i>Calliandra eriophylla</i> Pink Fairy Duster	5 gal.	8	
	<i>Dalea frutescens</i> Black Dalea	5 gal.	24	
	<i>Encelia farinosa</i> Brittlebush	5 gal.	17	
	<i>Ericameria laricifolia</i> Turpentine Bush	5 gal.	26	
	<i>Justicia californica</i> Chuparosa	5 gal.	9	
	<i>Justicia californica</i> 'Yellow' Yellow Chuparosa	5 gal.	8	
	<i>Larrea tridentata</i> Creosote	5 gal.	15	
	<i>Leucophyllum langmaniae</i> 'Lynn's Legacy' Lynn's Legacy Sage	5 gal.	45	
	<i>Leucophyllum zygophyllum</i> 'Cimarron' Cimarron Sage	5 gal.	8	
	<i>Ruellia brittoniana</i> Ruellia	5 gal.	9	Purple Flower
	<i>Ruellia peninsularis</i> Desert Ruellia	5 gal.	21	
	<i>Russelia equisetiformis</i> Coral Fountain	15 gal.	112	
	<i>Salvia greggii</i> 'Alba' White Texas Sage	5 gal.	30	
	<i>Simmondsia chinensis</i> Jojoba	5 gal.	11	
	<i>Sphaeralcea ambigua</i> Globe Mallow	5 gal.	21	
	<i>Tecoma</i> 'Sparky' Sparky Tecoma	5 gal.	15	

Sym.	Plant Name	Size	Qty	Remarks
	<i>Baileya multiradiata</i> Desert Marigold	1 gal.	79	
	<i>Chrysanthina mexicana</i> Damianita	1 gal.	10	
	<i>Dyssodia pentachaeta</i> Golden Dysodia	5 gal.	21	
	<i>Eremophila glabra</i> 'Mingenew Gold' Outback Sunrise Emu	3 gal.	163	
	<i>Glandularia gooddingii</i> Goodding Verbena	1 gal.	22	
	<i>Glandularia rigida</i> Sandpaper Verbena	5 gal.	48	
	<i>Lantana montevidensis</i> Purple Trailing Lantana	1 gal.	99	
	<i>Lantana montevidensis</i> 'White' White Lantana	1 gal.	119	
	<i>Lantana</i> 'New Gold' New Gold Lantana	1 gal.	21	

Sym.	Plant Name	Size	Qty	Remarks
	<i>Agave deserti</i> Desert Agave	5 gal.	6	
	<i>Agave</i> x 'Blue Glow' Blue Glow Agave	5 gal.	6	
	<i>Asclepias subulata</i> Desert Milkweed	1 gal.	9	
	<i>Cylindropuntia versicolor</i> Staghorn Cholla	5 gal.	7	
	<i>Echinocactus grusonii</i> Golden Barrel Cactus	5 gal.	8	
	<i>Euphorbia resinifera</i> Moroccan Mound	15 gal.	1	

	<i>Fouquieria splendens</i> Ocotillo	bare root	8	
	<i>Hesperaloe parviflora</i> 'Perpa' Brakelights	3 gal.	109	
	<i>Hesperaloe parviflora</i> -red Red Hesperaloe	5 gal.	34	
	<i>Opuntia basilaris</i> Beavertail Prickly Pear	5 gal.	9	
	<i>Opuntia engelmannii</i> Engelmann's Prickly Pear	5 gal.	17	
	<i>Pedilanthus macrocarpus</i> Lady's Slipper	5 gal.	4	
	<i>Yucca baccata</i> Banana Yucca	5 gal.	4	
	<i>Yucca rostrata</i> Beaked Yucca	5 gal.	4	

INERTS

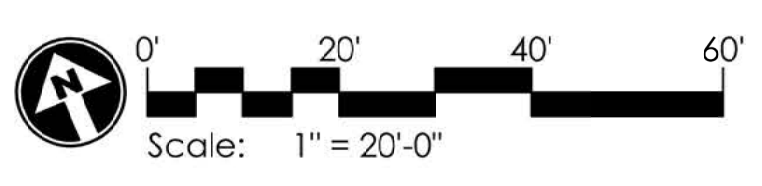
Sym.	Description
	ALL LANDSCAPE AREAS TO RECEIVE 5/8" - 3" SCREENED 'SUPERIOR GOLD' DESERT PAVEMENT FROM ROCK PROS USA 480-591-5151. (3" DEPTH MINIMUM.)

NOTES:

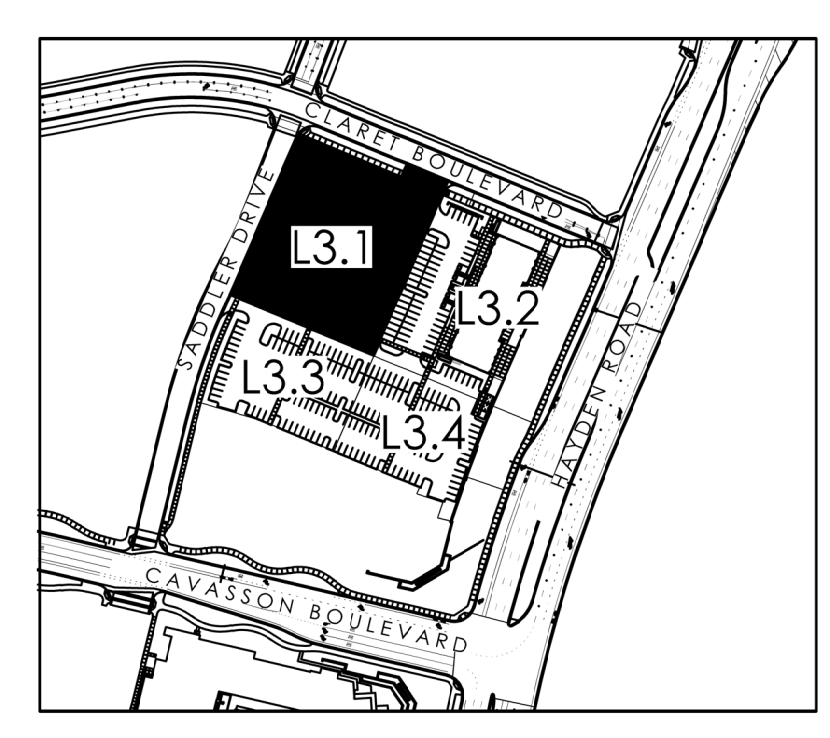
1. THE CONTRACTOR SHALL INSTALL NDS ROOT BARRIER PANELS AVAILABLE IN 20' ROLLS (OR APPROVED EQUAL) AT ALL TREES WITHIN 7'-0" FEET OF HARDSCAPE ELEMENTS INCLUDING (BUT NOT LIMITED TO) SIDEWALKS, ASPHALT, CONCRETE SLABS / FOOTINGS AND STRUCTURES. INSTALL PER ROOT BARRIER DETAIL. CONTRACTOR SHALL SUBMIT SPECIFICATION SHEETS OF PROPOSED ROOT BARRIER PANELS TO THE LANDSCAPE ARCHITECT FOR APPROVAL PRIOR TO INSTALLATION.
2. CONTRACTOR IS RESPONSIBLE FOR ALL SHIPPING / DELIVERY COSTS ASSOCIATED TO HAVE PLANT MATERIAL SHIPPED TO THE SITE FOR ANY OUT OF STATE MATERIALS. THIS INCLUDES, BUT IS NOT LIMITED TO, SATISFYING ALL DEPT. OF AGRICULTURE REQUIREMENTS ASSOCIATED WITH OBTAINING APPROVAL.
3. LANDSCAPE ARCHITECT TO APPROVE FINAL GRADING. PLANTING SHALL NOT OCCUR UNTIL FINAL GRADING IS APPROVED.
4. LOCATIONS OF PLANTS SHOWN ON DRAWING ARE APPROXIMATE. LANDSCAPE ARCHITECT TO FIELD APPROVE ALL FINAL LOCATIONS PRIOR TO INSTALLATION. LANDSCAPE CONTRACTOR HAS OPTION TO FLAG LOCATIONS OR PLACE CONTAINER MATERIAL.
5. DUE TO SEASONAL AND OR UNFORESEEN CONSTRAINTS SOME PLANT MATERIAL WILL POSSIBLY NOT BE AVAILABLE AT TIME OF INSTALLATION. LANDSCAPE CONTRACTOR TO SUBMIT LIST OF ANY NON-AVAILABLE MATERIAL TO LANDSCAPE ARCHITECT FOR REPLACEMENTS TO BE SELECTED.
6. ALL PLANT MATERIAL IS TO BE RETAIL QUALITY.
7. LANDSCAPE CONTRACTOR TO PROVIDE PICTURES OR SAMPLES OF ALL PLANT MATERIAL PRIOR TO INSTALLATION FOR APPROVAL.
8. ALL PLANT MATERIAL SOURCED FROM OUTSIDE OF ARIZONA TO BE PROPERLY ACCLIMATED TO ARIZONA CLIMATE DEPENDING ON TIME OF YEAR OF INSTALLATION. METHODS: SUN-SCREEN CLOTH/FABRIC TO BE INSTALLED ABOVE PLANT MATERIAL.
9. ALL CACTI OR ACCENT MATERIAL WITH SHARP THORNS TO BE PLANTED A MINIMUM OF 3'-0" CLEAR FROM SIDEWALKS
10. LANDSCAPE ARCHITECT RESERVES THE RIGHT TO REFUSE OR SEND BACK ANY PLANT MATERIAL THAT DOES NOT MEET QUALITY STANDARDS.

SALVAGE PLANT MATERIALS LEGEND

Sym.	Plant Name	Size	Qty	Remarks
	<i>Olea europaea</i> 'Swan Hill' Swan Hill Olive	Solvsage	9	
	<i>Olneya tesota</i> Ironwood	36" box 38 box, 7.0'-8.0" High, 5.0'-6.0" Wide	1	
	<i>Parkinsonia florida</i> Blue Palo Verde	36" box 38 box, 8.0'-10.0" High, 5.0'-6.0" Wide, 1.75-2.25 Caliper	8	
	<i>Parkinsonia microphylla</i> Foothills Palo Verde	36" box 38 box, 5.0'-8.0" High, 4.0'-5.0" Wide, 1.5-2.0 Caliper	2	
	<i>Prosopis velutina</i> Native Mesquite	36" box 38 box, 9.0'-11.0" High, 5.0'-6.0" Wide, 1.75-2.5 Caliper	3	
	<i>Carnegiea gigantea</i> Saguaro	Solvsage	18	



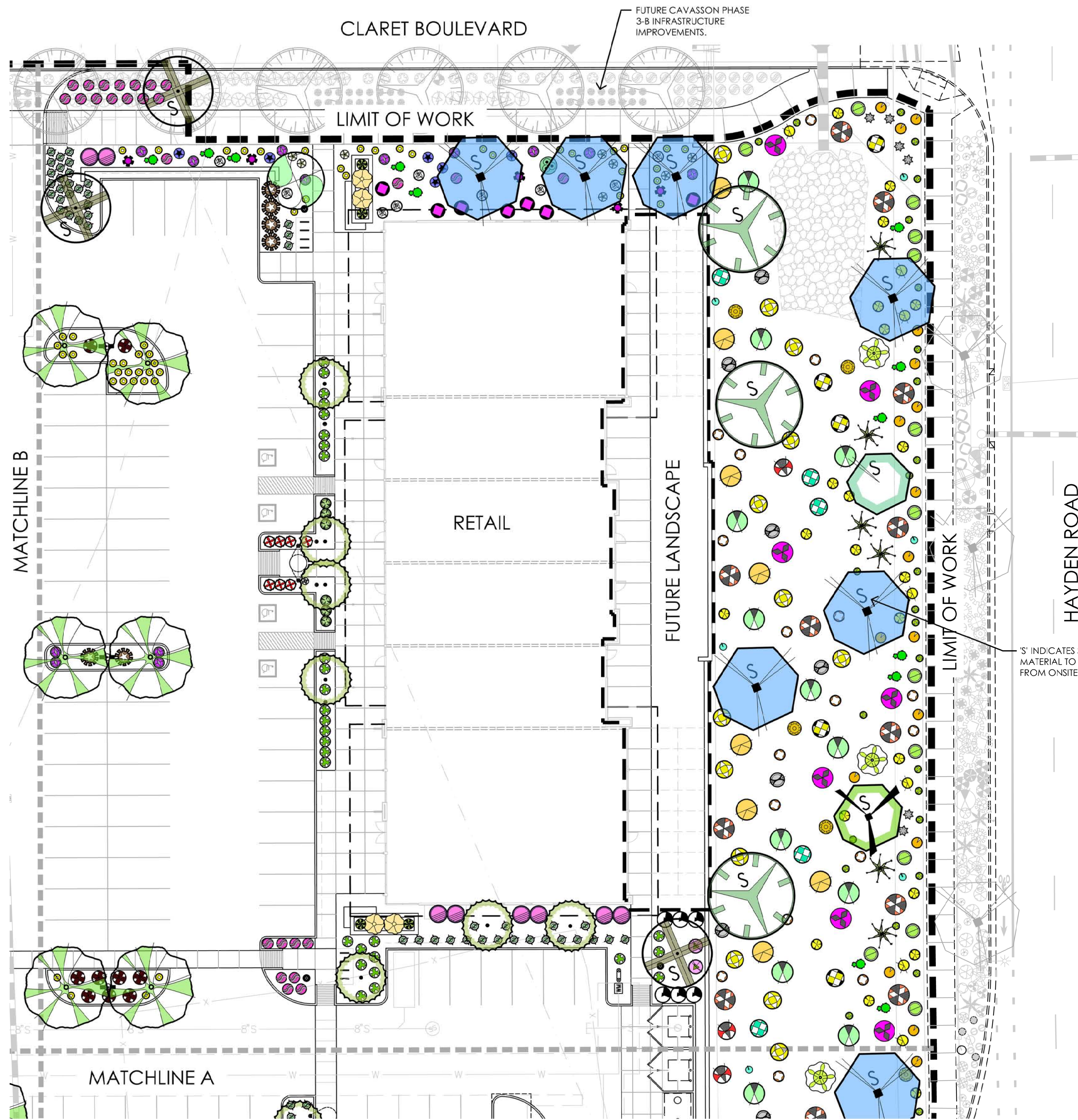
KEY MAP
SCALE: NTS



GREY PICKETT
 landscape architecture | community design
 7051 E. 5th Avenue, Suite 200
 Scottsdale, Arizona 85253
 480.609.0099 | 480.609.0068

Cavasson
 Retail and Medical Office Building
 Scottsdale, Arizona

project #: NR1025
 scale: 1" = 20'-0"
 issued for: DR
 drawn by: TEAM
 date: 10.25.24
 drawing: Planting Plan
L3.1
 of



PLANT MATERIALS LEGEND

Sym.	Plant Name	Size	Qty	Remarks
Trees				
	<i>Acacia aneura</i> Mulga Acacia	36" box 38 box, 7.0'-9.0' High, 4.0'-6.0' Wide, 1.5-2.0 Caliper	39	ADWR
	<i>Caesalpinia cacalaco</i> 'Smoothie' Thornless Cassalote	36" box 38 box, 8.0'-10.0' High, 5.0'-6.0' Wide, 1.5-2.0 Caliper	2	
	<i>Prosopis velutina</i> Native Mesquite	36" box 38 box, 9.0'-11.0' High, 5.0'-6.0' Wide, 1.75-2.5 Caliper	4	
	<i>Quercus virginiana</i> Southern Live Oak	36" box 38 box, 10.0'-12.0' High, 5.0'-7.0' Wide, 1.75-2.5 Caliper	23	
Shrubs				
	<i>Ambrosia deltoidea</i> Triangle Leaf Bursage	5 gal.	35	
	<i>Bougainvillea</i> 'Rosenka' Rosenka Bougainvillea	5 gal.	23	
	<i>Calliandra californica</i> Red Fairy Duster	5 gal.	4	
	<i>Calliandra eriophylla</i> Pink Fairy Duster	5 gal.	8	
	<i>Dalea frutescens</i> Black Dalea	5 gal.	24	
	<i>Encelia farinosa</i> Brittlebush	5 gal.	17	
	<i>Ericameria laricifolia</i> Turpentine Bush	5 gal.	26	
	<i>Justicia californica</i> Chuparosa	5 gal.	9	
	<i>Justicia californica</i> 'Yellow' Yellow Chuparosa	5 gal.	8	
	<i>Larrea tridentata</i> Creosote	5 gal.	15	
	<i>Leucophyllum langmaniae</i> 'Lynn's Legacy' Lynn's Legacy Sage	5 gal.	45	
	<i>Leucophyllum zygophyllum</i> 'Cimarron' Cimarron Sage	5 gal.	8	
	<i>Ruellia brittoniana</i> Ruellia	5 gal.	9	Purple Flower
	<i>Ruellia peninsularis</i> Desert Ruellia	5 gal.	21	
	<i>Russelia equisetiformis</i> Coral Fountain	15 gal.	112	
	<i>Salvia greggii</i> 'Alba' White Texas Sage	5 gal.	30	
	<i>Simmondsia chinensis</i> Jojoba	5 gal.	11	
	<i>Sphaeralcea ambigua</i> Globe Mallow	5 gal.	21	
	<i>Tecoma</i> 'Sparky' Sparky Tecoma	5 gal.	15	
Groundcovers				
	<i>Baileya multiradiata</i> Desert Marigold	1 gal.	79	
	<i>Chrysactinia mexicana</i> Damianita	1 gal.	10	
	<i>Dyssodia pentachaeta</i> Golden Dysodia	5 gal.	21	
	<i>Eremophila glabra</i> 'Mingenew Gold' Outback Sunrise Emu	3 gal.	163	
	<i>Glandularia gooddingii</i> Goodding Verbena	1 gal.	22	
	<i>Glandularia rigida</i> Sandpaper Verbena	5 gal.	48	
	<i>Lantana montevidensis</i> Purple Trailing Lantana	1 gal.	99	
	<i>Lantana montevidensis</i> 'White' White Lantana	1 gal.	119	
	<i>Lantana</i> 'New Gold' New Gold Lantana	1 gal.	21	
Cacti				
	<i>Agave deserti</i> Desert Agave	5 gal.	6	
	<i>Agave</i> x 'Blue Glow' Blue Glow Agave	5 gal.	6	
	<i>Asclepias subulata</i> Desert Milkweed	1 gal.	9	
	<i>Cylindropuntia versicolor</i> Staghorn Cholla	5 gal.	7	
	<i>Echinocactus grusonii</i> Golden Barrel Cactus	5 gal.	8	
	<i>Euphorbia resinifera</i> Moroccan Mound	15 gal.	1	

	<i>Fouquieria splendens</i> Ocotillo	bare root	8	
	<i>Hesperaloe parviflora</i> 'Perpa' Brakelights	3 gal.	109	
	<i>Hesperaloe parviflora-red</i> Red Hesperaloe	5 gal.	34	
	<i>Opuntia basilaris</i> Beavertail Prickly Pear	5 gal.	9	
	<i>Opuntia engelmannii</i> Engelmann's Prickly Pear	5 gal.	17	
	<i>Pedilanthus macrocarpus</i> Lady's Slipper	5 gal.	4	
	<i>Yucca baccata</i> Banana Yucca	5 gal.	4	
	<i>Yucca rostrata</i> Beaked Yucca	5 gal.	4	

INERTS

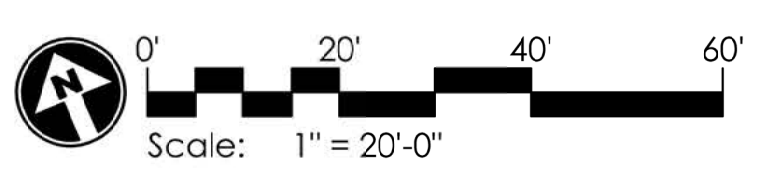
Sym.	Description
	ALL LANDSCAPE AREAS TO RECEIVE 5/8" - 3" SCREENED 'SUPERIOR GOLD' DESERT PAVEMENT FROM ROCK PROS USA 480-591-5151. (3" DEPTH MINIMUM.)

NOTES:

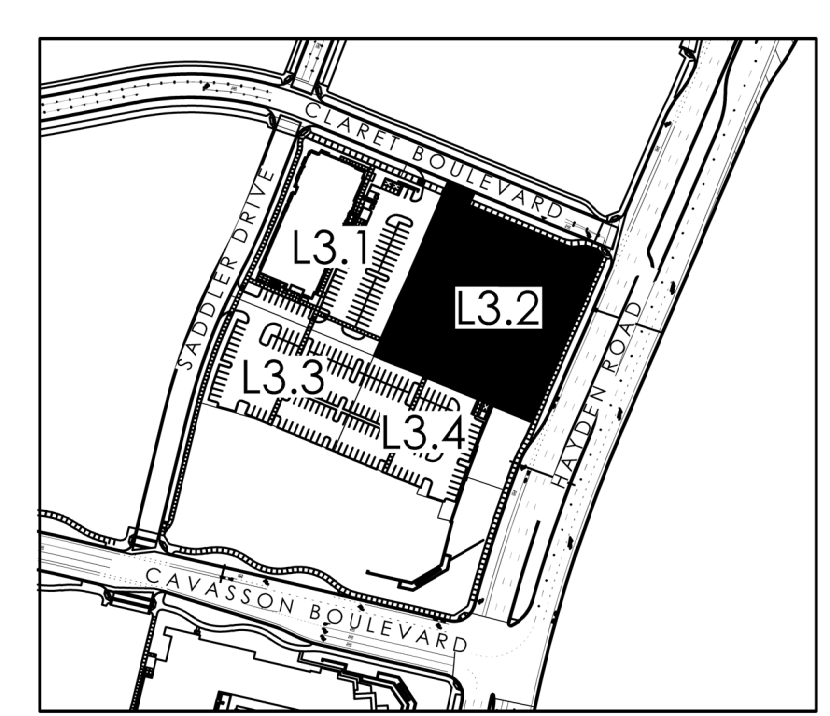
1. THE CONTRACTOR SHALL INSTALL NDS ROOT BARRIER PANELS AVAILABLE IN 20' ROLLS (OR APPROVED EQUAL) AT ALL TREES WITHIN 7'-0" FEET OF HARDSCAPE ELEMENTS INCLUDING (BUT NOT LIMITED TO) SIDEWALKS, ASPHALT, CONCRETE SLABS / FOOTINGS AND STRUCTURES. INSTALL PER ROOT BARRIER DETAIL. CONTRACTOR SHALL SUBMIT SPECIFICATION SHEETS OF PROPOSED ROOT BARRIER PANELS TO THE LANDSCAPE ARCHITECT FOR APPROVAL PRIOR TO INSTALLATION.
2. CONTRACTOR IS RESPONSIBLE FOR ALL SHIPPING / DELIVERY COSTS ASSOCIATED TO HAVE PLANT MATERIAL SHIPPED TO THE SITE FOR ANY OUT OF STATE MATERIALS. THIS INCLUDES, BUT IS NOT LIMITED TO, SATISFYING ALL DEPT. OF AGRICULTURE REQUIREMENTS ASSOCIATED WITH OBTAINING APPROVAL.
3. LANDSCAPE ARCHITECT TO APPROVE FINAL GRADING. PLANTING SHALL NOT OCCUR UNTIL FINAL GRADING IS APPROVED.
4. LOCATIONS OF PLANTS SHOWN ON DRAWING ARE APPROXIMATE. LANDSCAPE ARCHITECT TO FIELD APPROVE ALL FINAL LOCATIONS PRIOR TO INSTALLATION. LANDSCAPE CONTRACTOR HAS OPTION TO FLAG LOCATIONS OR PLACE CONTAINER MATERIAL.
5. DUE TO SEASONAL AND OR UNFORESEEN CONSTRAINTS SOME PLANT MATERIAL WILL POSSIBLY NOT BE AVAILABLE AT TIME OF INSTALLATION. LANDSCAPE CONTRACTOR TO SUBMIT LIST OF ANY NON-AVAILABLE MATERIAL TO LANDSCAPE ARCHITECT FOR REPLACEMENTS TO BE SELECTED.
6. ALL PLANT MATERIAL IS TO BE RETAIL QUALITY.
7. LANDSCAPE CONTRACTOR TO PROVIDE PICTURES OR SAMPLES OF ALL PLANT MATERIAL PRIOR TO INSTALLATION FOR APPROVAL.
8. ALL PLANT MATERIAL SOURCED FROM OUTSIDE OF ARIZONA TO BE PROPERLY ACCLIMATED TO ARIZONA CLIMATE DEPENDING ON TIME OF YEAR OF INSTALLATION. METHODS: SUN-SCREEN CLOTH/FABRIC TO BE INSTALLED ABOVE PLANT MATERIAL.
9. ALL CACTI OR ACCENT MATERIAL WITH SHARP THORNS TO BE PLANTED A MINIMUM OF 3'-0" CLEAR FROM SIDEWALKS
10. LANDSCAPE ARCHITECT RESERVES THE RIGHT TO REFUSE OR SEND BACK ANY PLANT MATERIAL THAT DOES NOT MEET QUALITY STANDARDS.

SALVAGE PLANT MATERIALS LEGEND

Sym.	Plant Name	Size	Qty	Remarks
Trees				
	<i>Olea europaea</i> 'Svan Hill' Swan Hill Olive	Salvage	9	
	<i>Olney tesota</i> Ironwood	36" box 38 box, 7.0'-8.0' High, 5.0'-6.0' Wide	1	
	<i>Parkinsonia florida</i> Blue Palo Verde	36" box 38 box, 8.0'-10.0' High, 5.0'-6.0' Wide, 1.75-2.25 Caliper	8	
	<i>Parkinsonia microphylla</i> Foothills Palo Verde	36" box 38 box, 5.0'-8.0' High, 4.0'-5.0' Wide, 1.5-2.0 Caliper	2	
	<i>Prosopis velutina</i> Native Mesquite	36" box 38 box, 9.0'-11.0' High, 5.0'-6.0' Wide, 1.75-2.5 Caliper	3	
Cacti				
	<i>Carnegiea gigantea</i> Saguaro	Salvage	18	



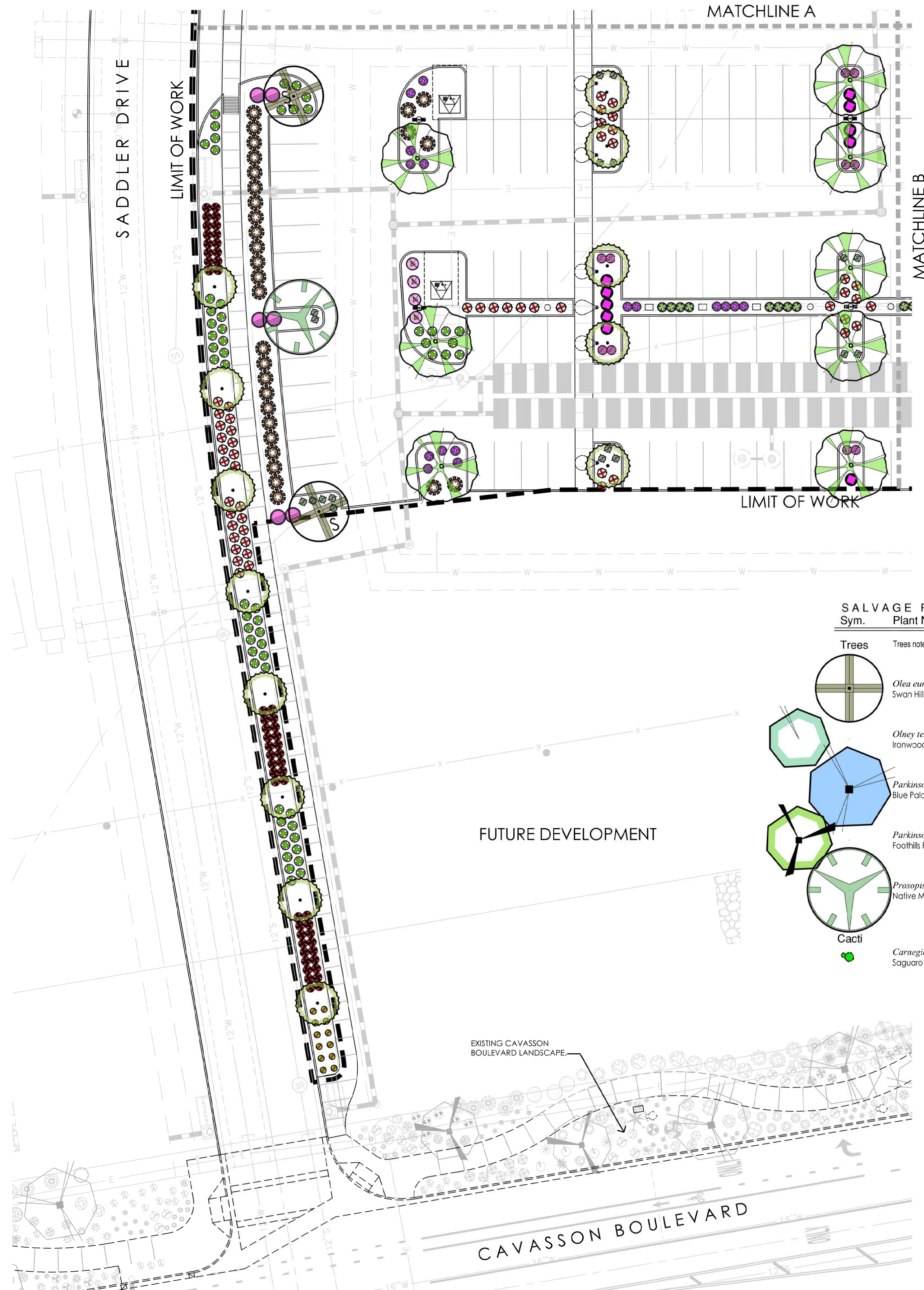
KEY MAP
SCALE: NTS



project #: NR1025
scale: 1" = 20'-0"
issued for: DR
drawn by: TEAM
date: 10.25.24
drawing: Planting Plan
L3.2
of

GREY PICKETT
landscape architecture | community design
7051 E. 5th Avenue, Suite 200
Scottsdale, AZ 85261
480.609.0099 | 480.609.0068

Cavasson
Retail and Medical Office Building
Scottsdale, Arizona



PLANT MATERIALS LEGEND

Sym.	Plant Name	Size	Qty	Remarks
Trees				
	<i>Acacia aneura</i> Mulga Acacia	36" box 38 box, 7.0'-9.0" High, 4.0'-6.0" Wide, 1.5-2.0 Caliper	39	ADWR
	<i>Caesalpinia cacalote</i> 'Smoothie' Thornless Cassalote	36" box 38 box, 8.0'-10.0" High, 5.0'-6.0" Wide, 1.5-2.0 Caliper	2	
	<i>Prosopis velutina</i> Native Mesquite	36" box 38 box, 9.0'-11.0" High, 5.0'-6.0" Wide, 1.75-2.5 Caliper	4	
	<i>Quercus virginiana</i> Southern Live Oak	36" box 38 box, 10.0'-12.0" High, 5.0'-7.0" Wide, 1.75-2.5 Caliper	23	
Shrubs				
	<i>Ambrosia deltoidea</i> Triangle Leaf Bursage	5 gal.	35	
	<i>Bougainvillea</i> 'Rosenka' Rosenka Bougainvillea	5 gal.	23	
	<i>Calliandra californica</i> Red Fairy Duster	5 gal.	4	
	<i>Calliandra eriophylla</i> Pink Fairy Duster	5 gal.	8	
	<i>Dalea frutescens</i> Black Dalea	5 gal.	24	
	<i>Encelia farinosa</i> Brittlebush	5 gal.	17	
	<i>Ericameria laricifolia</i> Turpentine Bush	5 gal.	26	
	<i>Justicia californica</i> Chuparosa	5 gal.	9	
	<i>Justicia californica</i> 'Yellow' Yellow Chuparosa	5 gal.	8	
	<i>Larrea tridentata</i> Creosote	5 gal.	15	
	<i>Leucophyllum langmaniae</i> 'Lynn's Legacy' Lynn's Legacy Sage	5 gal.	45	
	<i>Leucophyllum zygophyllum</i> 'Cimarron' Cimarron Sage	5 gal.	8	
	<i>Ruellia brittoniana</i> Ruellia	5 gal.	9	Purple Flower
	<i>Ruellia peninsularis</i> Desert Ruellia	5 gal.	21	
	<i>Russelia equisetiformis</i> Coral Fountain	15 gal.	112	
	<i>Salvia greggii</i> 'Alba' White Texas Sage	5 gal.	30	
	<i>Simmondsia chinensis</i> Jojoba	5 gal.	11	
	<i>Sphaeralcea ambigua</i> Globe Mallow	5 gal.	21	
	<i>Tecoma</i> 'Sparky' Sparky Tecoma	5 gal.	15	
Groundcovers				
	<i>Baileya multiradiata</i> Desert Marigold	1 gal.	79	
	<i>Chrysanthena mexicana</i> Damianita	1 gal.	10	
	<i>Dyssodia pentachaeta</i> Golden Dysodia	5 gal.	21	
	<i>Eremophila glabra</i> 'Mingenew Gold' Outback Sunrise Emu	3 gal.	163	
	<i>Glandularia gooddingii</i> Goodding Verbena	1 gal.	22	
	<i>Glandularia rigida</i> Sandpaper Verbena	5 gal.	48	
	<i>Lantana montevidensis</i> Purple Trailing Lantana	1 gal.	99	
	<i>Lantana montevidensis</i> 'White' White Lantana	1 gal.	119	
	<i>Lantana</i> 'New Gold' New Gold Lantana	1 gal.	21	
Cacti				
	<i>Agave deserti</i> Desert Agave	5 gal.	6	
	<i>Agave</i> 'Blue Glow' Blue Glow Agave	5 gal.	6	
	<i>Asclepias subulata</i> Desert Milkweed	1 gal.	9	
	<i>Cylindropuntia versicolor</i> Staghorn Cholla	5 gal.	7	
	<i>Echinocactus grusonii</i> Golden Barrel Cactus	5 gal.	8	
	<i>Euphorbia resinifera</i> Moroccan Mound	15 gal.	1	

SALVAGE PLANT MATERIALS LEGEND

Sym.	Plant Name	Size	Qty	Remarks
Trees				
Trees noted on plan with 'S' are salvage trees to be selected from on site nursery.				
	<i>Olea europaea</i> 'Swan Hill' Swan Hill Olive	Salvage	9	
	<i>Olneya tesota</i> Ironwood	36" box 38 box, 7.0'-8.0" High, 5.0'-6.0" Wide	1	
	<i>Parkinsonia florida</i> Blue Palo Verde	36" box 38 box, 8.0'-10.0" High, 5.0'-6.0" Wide, 1.75-2.25 Caliper	8	
	<i>Parkinsonia microphylla</i> Foothills Palo Verde	36" box 38 box, 5.0'-6.0" High, 4.0'-5.0" Wide, 1.5-2.0 Caliper	2	
	<i>Prosopis velutina</i> Native Mesquite	36" box 38 box, 9.0'-11.0" High, 5.0'-6.0" Wide, 1.75-2.5 Caliper	3	
Cacti				
	<i>Carnegiea gigantea</i> Saguaro	Salvage	18	

	<i>Fouquieria splendens</i> Ocotillo	bare root	8	
	<i>Hesperaloe parviflora</i> 'Perpa' Brakelights	3 gal.	109	
	<i>Hesperaloe parviflora-red</i> Red Hesperaloe	5 gal.	34	
	<i>Opuntia basilaris</i> Beavertail Prickly Pear	5 gal.	9	
	<i>Opuntia engelmannii</i> Engelmann's Prickly Pear	5 gal.	17	
	<i>Pedilanthus macrocarpus</i> Lady's Slipper	5 gal.	4	
	<i>Yucca baccata</i> Banana Yucca	5 gal.	4	
	<i>Yucca rostrata</i> Beaked Yucca	5 gal.	4	

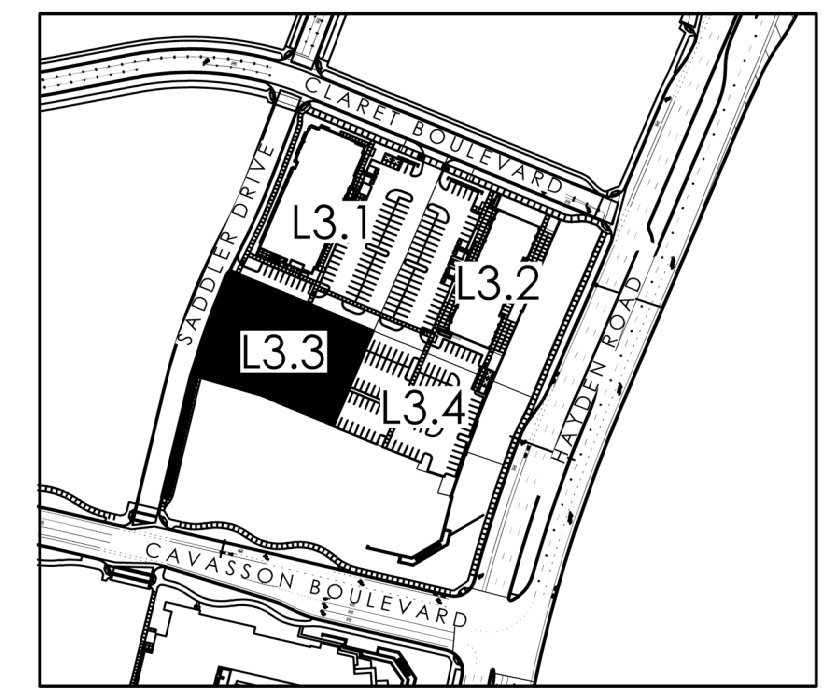
INERTS

Sym.	Description
	ALL LANDSCAPE AREAS TO RECEIVE 5/8" - 3" SCREENED 'SUPERIOR GOLD' DESERT PAVEMENT FROM ROCK PROS USA 480-591-5151. (3" DEPTH MINIMUM.)

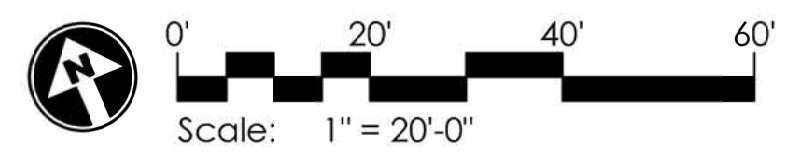
NOTES:

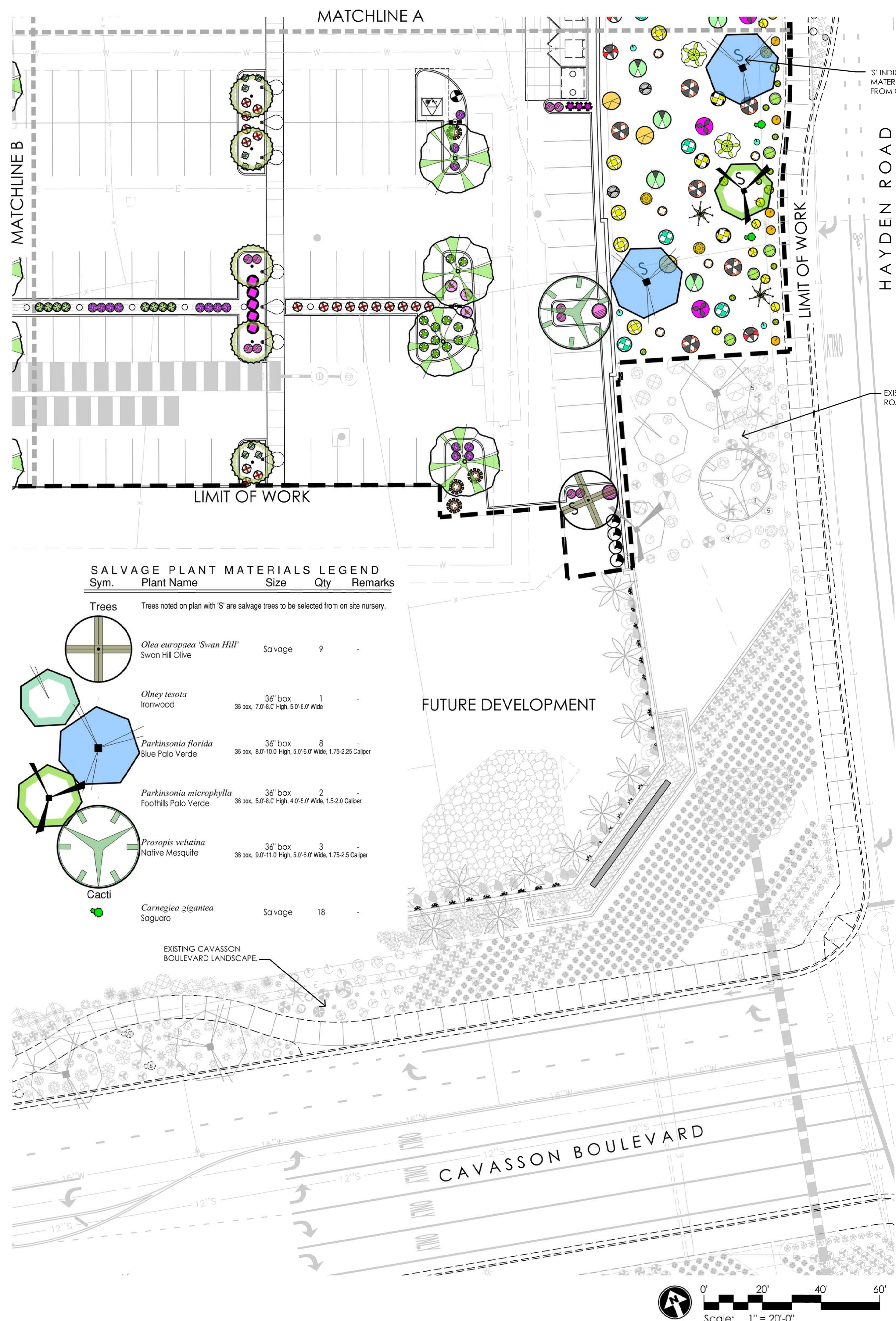
1. THE CONTRACTOR SHALL INSTALL NDS ROOT BARRIER PANELS AVAILABLE IN 20' ROLLS (OR APPROVED EQUAL) AT ALL TREES WITHIN 7'-0" FEET OF HARDSCAPE ELEMENTS INCLUDING (BUT NOT LIMITED TO) SIDEWALKS, ASPHALT, CONCRETE SLABS / FOOTINGS AND STRUCTURES. INSTALL PER ROOT BARRIER DETAIL. CONTRACTOR SHALL SUBMIT SPECIFICATION SHEETS OF PROPOSED ROOT BARRIER PANELS TO THE LANDSCAPE ARCHITECT FOR APPROVAL PRIOR TO INSTALLATION.
2. CONTRACTOR IS RESPONSIBLE FOR ALL SHIPPING / DELIVERY COSTS ASSOCIATED TO HAVE PLANT MATERIAL SHIPPED TO THE SITE FOR ANY OUT OF STATE MATERIALS. THIS INCLUDES, BUT IS NOT LIMITED TO, SATISFYING ALL DEPT. OF AGRICULTURE REQUIREMENTS ASSOCIATED WITH OBTAINING APPROVAL.
3. LANDSCAPE ARCHITECT TO APPROVE FINAL GRADING. PLANTING SHALL NOT OCCUR UNTIL FINAL GRADING IS APPROVED.
4. LOCATIONS OF PLANTS SHOWN ON DRAWING ARE APPROXIMATE. LANDSCAPE ARCHITECT TO FIELD APPROVE ALL FINAL LOCATIONS PRIOR TO INSTALLATION. LANDSCAPE CONTRACTOR HAS OPTION TO FLAG LOCATIONS OR PLACE CONTAINER MATERIAL.
5. DUE TO SEASONAL AND/OR UNFORESEEN CONSTRAINTS SOME PLANT MATERIAL WILL POSSIBLY NOT BE AVAILABLE AT TIME OF INSTALLATION. LANDSCAPE CONTRACTOR TO SUBMIT LIST OF ANY NON-AVAILABLE MATERIAL TO LANDSCAPE ARCHITECT FOR REPLACEMENTS TO BE SELECTED.
6. ALL PLANT MATERIAL IS TO BE RETAIL QUALITY.
7. LANDSCAPE CONTRACTOR TO PROVIDE PICTURES OR SAMPLES OF ALL PLANT MATERIAL PRIOR TO INSTALLATION FOR APPROVAL.
8. ALL PLANT MATERIAL SOURCED FROM OUTSIDE OF ARIZONA TO BE PROPERLY ACCLIMATED TO ARIZONA CLIMATE DEPENDING ON TIME OF YEAR OF INSTALLATION. METHODS: SUN-SCREEN CLOTH/FABRIC TO BE INSTALLED ABOVE PLANT MATERIAL.
9. ALL CACTI OR AGENT MATERIAL WITH SHARP THORNS TO BE PLANTED A MINIMUM OF 3'-0" CLEAR FROM SIDEWALKS
10. LANDSCAPE ARCHITECT RESERVES THE RIGHT TO REFUSE OR SEND BACK ANY PLANT MATERIAL THAT DOES NOT MEET QUALITY STANDARDS.

KEY MAP
SCALE: NTS



project #: NR1025
scale: 1" = 20'-0"
issued for: DR
drawn by: TEAM
date: 10.25.24
drawing: Planting Plan
L3.3
of





'S' INDICATES SALVAGE MATERIAL TO BE SELECTED FROM ONSITE NURSERY.

EXISTING HAYDEN ROAD LANDSCAPE.

EXISTING CAVASSON BOULEVARD LANDSCAPE.

SALVAGE PLANT MATERIALS LEGEND

Sym.	Plant Name	Size	Qty	Remarks
Trees				
Trees noted on plan with 'S' are salvage trees to be selected from on site nursery.				
	<i>Olea europaea</i> 'Swan Hill' Swan Hill Olive	Salvage	9	
	<i>Olney tesota</i> Ironwood	36" box 38 box, 7.0'-8.0" High, 5.0'-6.0" Wide	1	
	<i>Parkinsonia florida</i> Blue Palo Verde	36" box 38 box, 8.0'-10.0" High, 5.0'-6.0" Wide, 1.75-2.25 Caliper	8	
	<i>Parkinsonia microphylla</i> Foothills Palo Verde	36" box 38 box, 5.0'-8.0" High, 4.0'-5.0" Wide, 1.5-2.0 Caliper	2	
	<i>Prosopis velutina</i> Native Mesquite	36" box 38 box, 9.0'-11.0" High, 5.0'-6.0" Wide, 1.75-2.5 Caliper	3	
Cacti				
	<i>Carnegiea gigantea</i> Saguaro	Salvage	18	

PLANT MATERIALS LEGEND

Sym.	Plant Name	Size	Qty	Remarks
Trees				
	<i>Acacia aneura</i> Mulga Acacia	36" box 38 box, 7.0'-9.0" High, 4.0'-6.0" Wide, 1.5-2.0 Caliper	39	ADWR
	<i>Caesalpinia cacalote</i> 'Smoothie' Thornless Cassalote	36" box 38 box, 8.0'-10.0" High, 5.0'-6.0" Wide, 1.5-2.0 Caliper	2	
	<i>Prosopis velutina</i> Native Mesquite	36" box 38 box, 9.0'-11.0" High, 5.0'-6.0" Wide, 1.75-2.5 Caliper	4	
	<i>Quercus virginiana</i> Southern Live Oak	36" box 38 box, 10.0'-12.0" High, 5.0'-7.0" Wide, 1.75-2.5 Caliper	23	
Shrubs				
	<i>Ambrosia deltoidea</i> Triangle Leaf Bursage	5 gal.	35	
	<i>Bougainvillea</i> 'Rosenka' Rosenka Bougainvillea	5 gal.	23	
	<i>Calliandra californica</i> Red Fairy Duster	5 gal.	4	
	<i>Calliandra eriophylla</i> Pink Fairy Duster	5 gal.	8	
	<i>Dalea frutescens</i> Black Dalea	5 gal.	24	
	<i>Encelia farinosa</i> Brittlebush	5 gal.	17	
	<i>Ericameria laricifolia</i> Turpentine Bush	5 gal.	26	
	<i>Justicia californica</i> Chuparosa	5 gal.	9	
	<i>Justicia californica</i> 'Yellow' Yellow Chuparosa	5 gal.	8	
	<i>Larrea tridentata</i> Creosote	5 gal.	15	
	<i>Leucophyllum langamaniae</i> 'Lynn's Legacy' Lynn's Legacy Sage	5 gal.	45	
	<i>Leucophyllum zygophyllum</i> 'Cimarron' Cimarron Sage	5 gal.	8	
	<i>Ruellia brittoniana</i> Ruellia	5 gal.	9	Purple Flower
	<i>Ruellia peninsularis</i> Desert Ruellia	5 gal.	21	
	<i>Russelia equisetiformis</i> Coral Fountain	15 gal.	112	
	<i>Salvia greggii</i> 'Alba' White Texas Sage	5 gal.	30	
	<i>Simmondsia chinensis</i> Jojoba	5 gal.	11	
	<i>Sphaeralcea ambigua</i> Globe Mallow	5 gal.	21	
	<i>Tecoma</i> 'Sparky' Sparky Tecoma	5 gal.	15	
Groundcovers				
	<i>Baileya multiradiata</i> Desert Marigold	1 gal.	79	
	<i>Chrysactinia mexicana</i> Damianita	1 gal.	10	
	<i>Dysodia pentachaeta</i> Golden Dysodia	5 gal.	21	
	<i>Eremophila glabra</i> 'Mingenew Gold' Outback Sunrise Emu	3 gal.	163	
	<i>Glandularia gooddingii</i> Goodding Verbena	1 gal.	22	
	<i>Glandularia rigida</i> Sandpaper Verbena	5 gal.	48	
	<i>Lantana montevidensis</i> Purple Trailing Lantana	1 gal.	99	
	<i>Lantana montevidensis</i> 'White' White Lantana	1 gal.	119	
	<i>Lantana</i> 'New Gold' New Gold Lantana	1 gal.	21	
Cacti				
	<i>Agave deserti</i> Desert Agave	5 gal.	6	
	<i>Agave</i> x 'Blue Glow' Blue Glow Agave	5 gal.	6	
	<i>Asclepias subulata</i> Desert Milkweed	1 gal.	9	
	<i>Cylindropuntia versicolor</i> Staghorn Cholla	5 gal.	7	
	<i>Echinocactus grusonii</i> Golden Barrel Cactus	5 gal.	8	
	<i>Euphorbia resinifera</i> Moroccan Mound	15 gal.	1	

	<i>Fouquieria splendens</i> Ocotillo	bare root	8	
	<i>Hesperaloe parviflora</i> 'Perpa' Brakelights	3 gal.	109	
	<i>Hesperaloe parviflora-red</i> Red Hesperaloe	5 gal.	34	
	<i>Opuntia basilaris</i> Beavertail Prickly Pear	5 gal.	9	
	<i>Opuntia engelmannii</i> Engelmann's Prickly Pear	5 gal.	17	
	<i>Pedilanthus macrocarpus</i> Lady's Slipper	5 gal.	4	
	<i>Yucca baccata</i> Banana Yucca	5 gal.	4	
	<i>Yucca rostrata</i> Beaked Yucca	5 gal.	4	

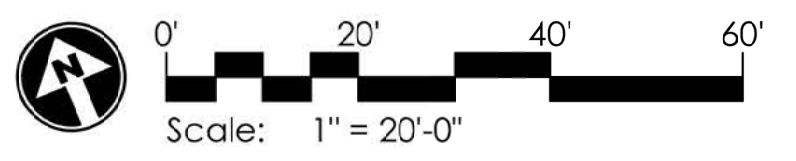
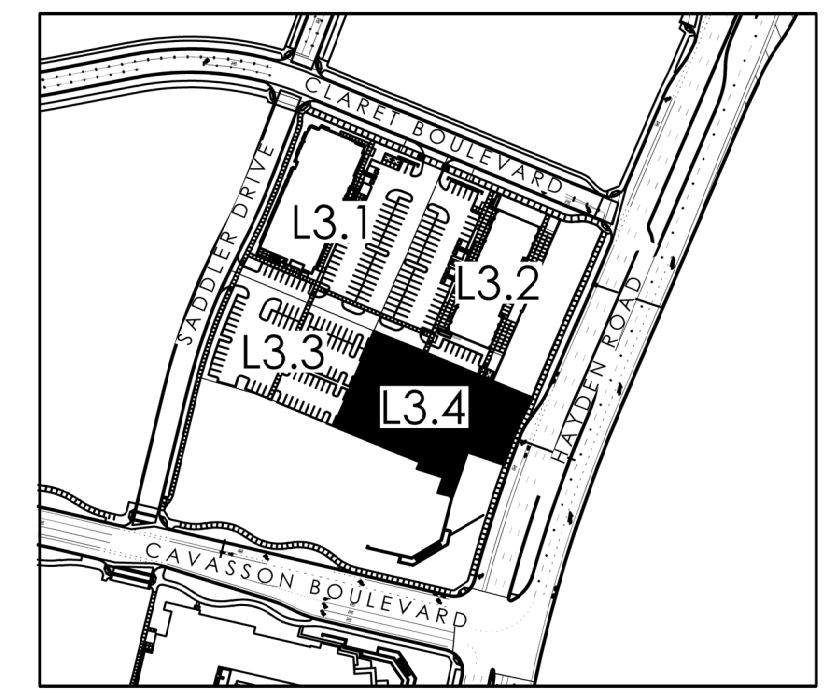
INERTS

Sym.	Description
	ALL LANDSCAPE AREAS TO RECEIVE 5/8" - 3" SCREENED 'SUPERIOR GOLD' DESERT PAVEMENT FROM ROCK PROS USA 480-591-5151. (3" DEPTH MINIMUM.)

NOTES:

1. THE CONTRACTOR SHALL INSTALL NDS ROOT BARRIER PANELS AVAILABLE IN 20' ROLLS (OR APPROVED EQUAL) AT ALL TREES WITHIN 7'-0" FEET OF HARDSCAPE ELEMENTS INCLUDING (BUT NOT LIMITED TO) SIDEWALKS, ASPHALT, CONCRETE SLABS / FOOTINGS AND STRUCTURES. INSTALL PER ROOT BARRIER DETAIL. CONTRACTOR SHALL SUBMIT SPECIFICATION SHEETS OF PROPOSED ROOT BARRIER PANELS TO THE LANDSCAPE ARCHITECT FOR APPROVAL PRIOR TO INSTALLATION.
2. CONTRACTOR IS RESPONSIBLE FOR ALL SHIPPING / DELIVERY COSTS ASSOCIATED TO HAVE PLANT MATERIAL SHIPPED TO THE SITE FOR ANY OUT OF STATE MATERIALS. THIS INCLUDES, BUT IS NOT LIMITED TO, SATISFYING ALL DEPT. OF AGRICULTURE REQUIREMENTS ASSOCIATED WITH OBTAINING APPROVAL.
3. LANDSCAPE ARCHITECT TO APPROVE FINAL GRADING. PLANTING SHALL NOT OCCUR UNTIL FINAL GRADING IS APPROVED.
4. LOCATIONS OF PLANTS SHOWN ON DRAWING ARE APPROXIMATE. LANDSCAPE ARCHITECT TO FIELD APPROVE ALL FINAL LOCATIONS PRIOR TO INSTALLATION. LANDSCAPE CONTRACTOR HAS OPTION TO FLAG LOCATIONS OR PLACE CONTAINER MATERIAL.
5. DUE TO SEASONAL AND OR UNFORESEEN CONSTRAINTS SOME PLANT MATERIAL WILL POSSIBLY NOT BE AVAILABLE AT TIME OF INSTALLATION. LANDSCAPE CONTRACTOR TO SUBMIT LIST OF ANY NON-AVAILABLE MATERIAL TO LANDSCAPE ARCHITECT FOR REPLACEMENTS TO BE SELECTED.
6. ALL PLANT MATERIAL IS TO BE RETAIL QUALITY.
7. LANDSCAPE CONTRACTOR TO PROVIDE PICTURES OR SAMPLES OF ALL PLANT MATERIAL PRIOR TO INSTALLATION FOR APPROVAL.
8. ALL PLANT MATERIAL SOURCED FROM OUTSIDE OF ARIZONA TO BE PROPERLY ACCLIMATED TO ARIZONA CLIMATE DEPENDING ON TIME OF YEAR OF INSTALLATION.
METHODS: SUN-SCREEN CLOTH/FABRIC TO BE INSTALLED ABOVE PLANT MATERIAL.
9. ALL CACTI OR ACCENT MATERIAL WITH SHARP THORNS TO BE PLANTED A MINIMUM OF 3'-0" CLEAR FROM SIDEWALKS
10. LANDSCAPE ARCHITECT RESERVES THE RIGHT TO REFUSE OR SEND BACK ANY PLANT MATERIAL THAT DOES NOT MEET QUALITY STANDARDS.

KEY MAP
SCALE: NTS



GREY PICKETT
 landscape architecture | community design
 7051 E. 5th Avenue, Suite 200
 Scottsdale, Arizona 85261
 480.609.0099 | 480.609.0068

Cavasson
 Retail and Medical Office Building
 Scottsdale, Arizona

project #: NR1025
 scale: 1" = 20'-0"
 issued for: DR
 drawn by: TEAM
 date: 10.25.24
 drawing: Planting Plan
L3.4
 of



Butler Design Group Inc.
 architects & planners
 5013 East Washington St. #100
 Phoenix, Arizona 85034
 Phone 602-957-1800

PRELIMINARY
 NOT FOR
 CONSTRUCTION

OWNERSHIP OF INSTRUMENTS OF SERVICE
 All reports, plans, specifications, computer files, third party notes and
 other documents and drawings prepared by the design professional
 shall remain the property of the design professional. The design professional shall retain all common law,
 statutory and other related rights, including the copyright therein.



CAVASSON

Retail North & M.O.B.
 Scottsdale, Arizona

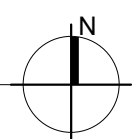
Current Submittal: DRB
 10/25/2024

Revisions:

Project No.: 15148
 Issue Date: 10/25/2024
 Drawn By: --
 Project Manager: --
 Title:

CONTEXT AERIAL

1 CONTEXT AERIAL
 SCALE: 1" = 160'-0"



DR23