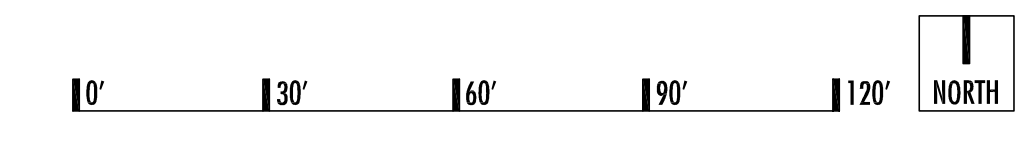




### Project Data

<b>Site Area:</b>	2.11 acres net (91,855 sf) 2.42 acres gross (105,370 sf)
<b>Residential Area:</b>	166,000sf gross (132,600sf leasable)
<b>Total Units:</b>	150 units 136 1-bedroom 14 2-bedroom
<b>Density:</b>	61.98 / acre gross
<b>Flex Office Area:</b>	4,000sf
<b>Parking Required:</b>	240 spaces 1-br: 1.3 per unit [ 136 x 1.3 = 177 spaces ] 2-br: 1.7 per unit [ 14 x 1.7 = 24 spaces ] Guest: 1/6 per unit [ 150 / 6 = 25 spaces ] Flex/Office: 1/300 sf [ 4000 sf / 300 sf = 14 spaces ]
<b>Parking Provided:</b>	286 spaces

Note: Existing overhead utility lines along north property line will be buried as part of this development.  
This project design will be based on the MCDOT benchmark system and in accordance with the FEMA Benchmark Maintenance criteria.



## Site Plan

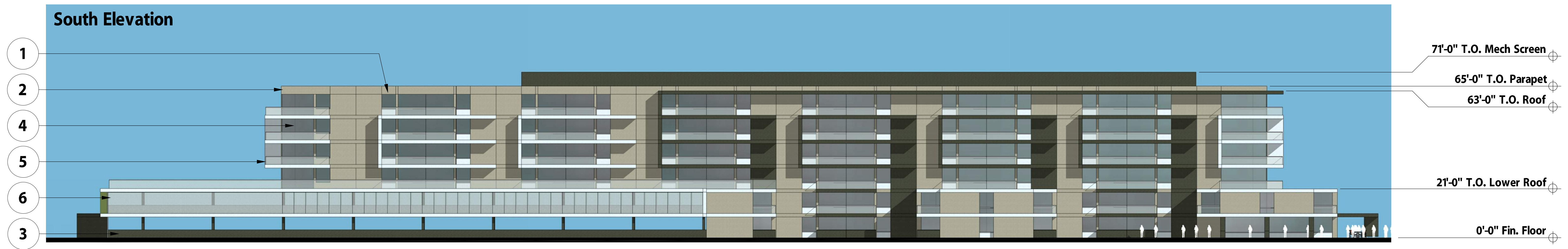
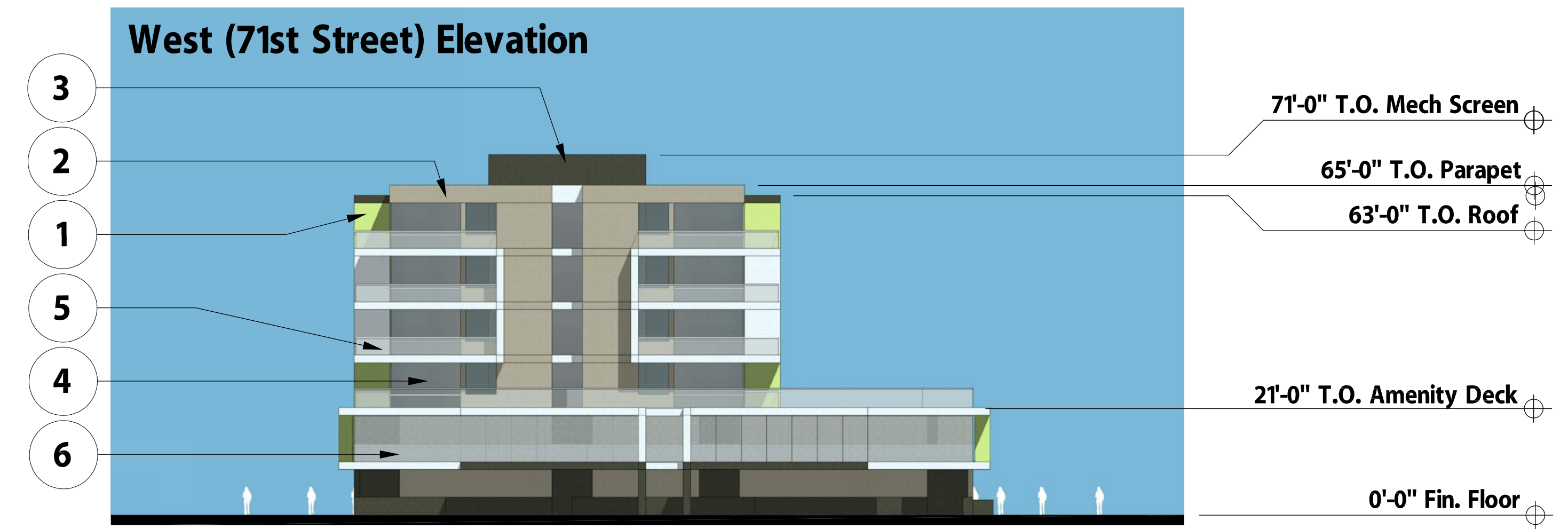
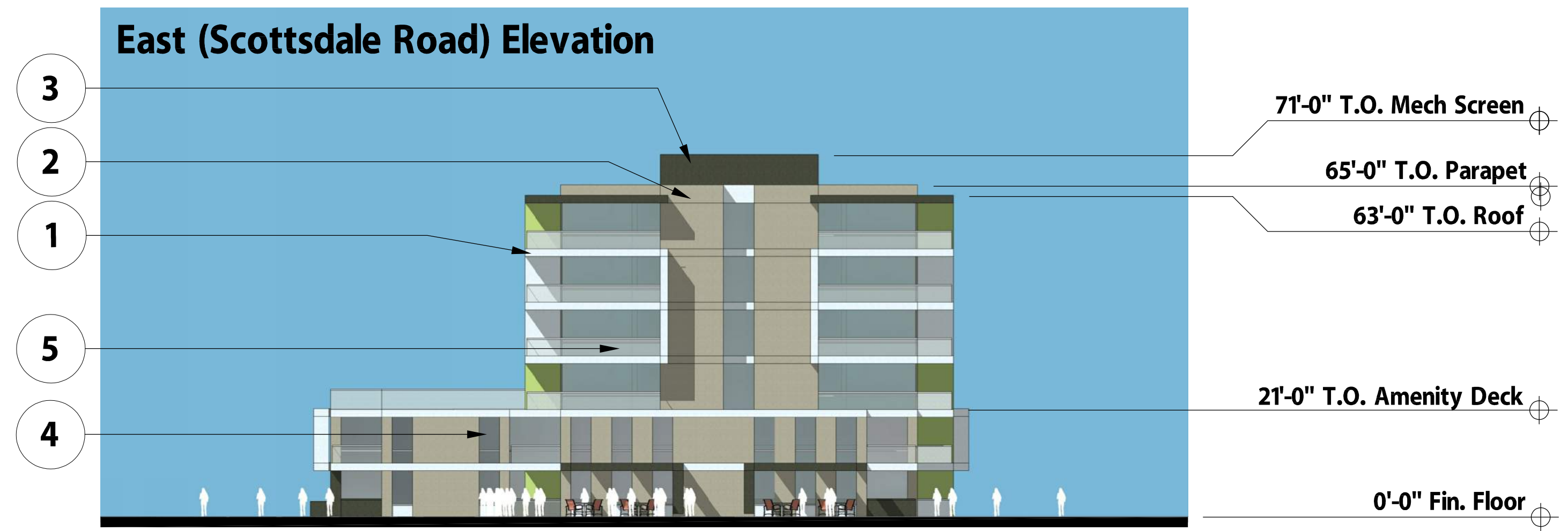
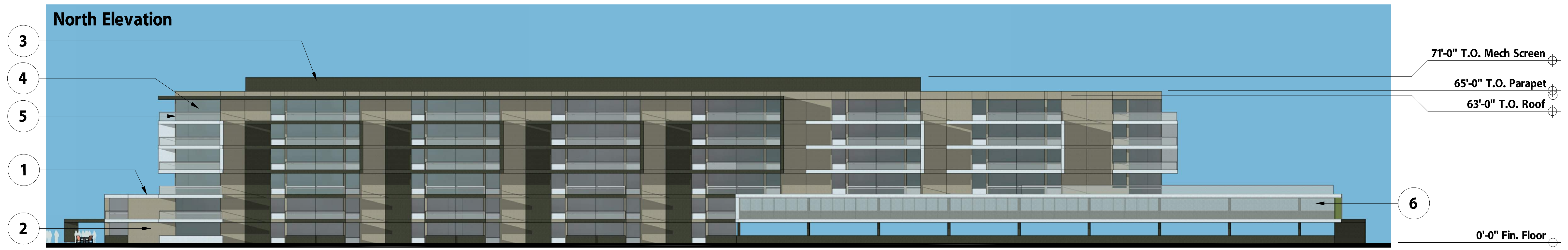
3202 SCOTTSDALE- Scottsdale, Arizona

[21137] 9-15-22

Notice of IP Rights: 2022 DAVIS. THESE DESIGNS ARE THE EXCLUSIVE PROPERTY OF DAVIS. NO USE OR REPRODUCTION IS PERMITTED WITHOUT THE EXPRESS WRITTEN PERMISSION OF DAVIS.







- 1 EIFS 01 - White Finish
- 2 EIFS 02- Beige Finish
- 3 EIFS 03- Brown Finish
- 4 GLAZING 01 - 1" Insulated Glazing w/ Black Aluminum Frame
- 5 SCREEN 01 - Perforated Guardrail Mesh w/ Black Aluminum Frame
- 6 SCREEN 02 - Perforated Parking Garage Screen

**Building Elevations**

0' 20' 40' 60' 80'

[21137] 9-15-22

# 3202 SCOTTSDALE- Scottsdale, Arizona

Notice of IP Rights: 2022 DAVIS. THESE DESIGNS ARE THE EXCLUSIVE PROPERTY OF DAVIS. NO USE OR REPRODUCTION IS PERMITTED WITHOUT THE EXPRESS WRITTEN PERMISSION OF DAVIS.