

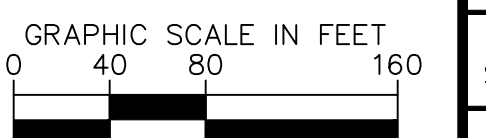
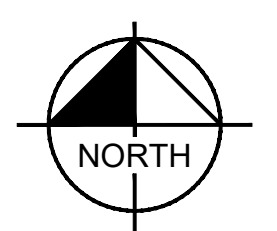
**LINE TABLE**

LINE	LENGTH	BEARING
L1	302.45	S3°48'29.23"E
L2	53.34	S12°25'55.50"W
L3	197.71	N81°47'39.20"E
L4	100.33	S74°08'53.89"E
L5	116.49	N84°58'32.58"E
L6	134.94	N19°58'18.44"E
L7	168.46	N0°08'33.71"W
L8	43.04	N43°59'43.49"W
L9	43.05	S43°51'13.60"E
L10	53.86	S0°00'00.00"E
L11	334.91	S15°51'06.11"W
L12	352.31	N0°03'19.19"W
L13	111.32	S89°59'49.38"E

**NOTE:**  
 LOT XX<sup>1</sup>: R1-70  
 LOT XX<sup>2</sup>: R1-43

**CURVE TABLE**

CURVE	RADIUS	LENGTH	CHORD BEARING	CHORD	DELTA	TANGENT
C1	500.00'	141.72'	N4°18'43"E	141.25'	16°14'25"	71.34'
C2	200.00'	386.20'	S42°53'13"E	328.93'	110°38'16"	289.04'
C3	600.00'	251.93'	N86°10'37"W	250.08'	24°03'27"	127.85'
C4	600.00'	162.41'	S81°54'11"E	161.92'	15°30'34"	81.71'
C5	600.00'	56.20'	N87°39'32"E	56.18'	5°22'00"	28.12'
C6	200.00'	280.97'	N44°43'48"E	258.43'	80°29'29"	169.29'
C7	600.00'	162.18'	S12°13'41"W	161.69'	15°29'15"	81.59'
C8	150.00'	52.66'	N9°54'51"E	52.39'	20°06'56"	26.60'
C9	100.00'	76.54'	N22°04'09"W	74.68'	43°51'10"	40.25'
C10	100.00'	76.54'	N21°55'37"W	74.68'	43°51'14"	40.25'
C11	230.00'	63.63'	N7°55'33"E	63.43'	15°51'06"	32.02'
C12	300.00'	130.92'	S77°29'41"E	129.89'	25°00'17"	66.52'



\* IN-LIEU PAYMENT FOR FULL HALF STREET IMPROVEMENTS TO BE MADE BY DEVELOPER AT TIME OF FINAL PLAT RECORDATION.

K:\VHK\_Civil\291641000 - 84th and Dynamite\CADD\Preliminary\Plat\291641000P.dwg Jun 09, 2026 David Swift  
 XREFS: K:\BEN\_291641000\BEN\_291641000.dwg K:\BEN\_291641000\BEN\_291641000.dwg K:\BEN\_291641000\BEN\_291641000.dwg  
 DATE: 06/09/2026 10:58:10 AM

**Kimley»Horn**

84TH AND DYNAMITE  
 SCOTTSDALE, ARIZONA  
 PRELIMINARY PLAT  
 SUBDIVISION PLAN

PRELIMINARY  
 FOR REVIEW ONLY  
 NOT FOR CONSTRUCTION

**Kimley»Horn**  
 ENGINEER: ZACH HILL  
 PE NO. 63454, DATE: 06/26

PROJECT NO.  
291641000

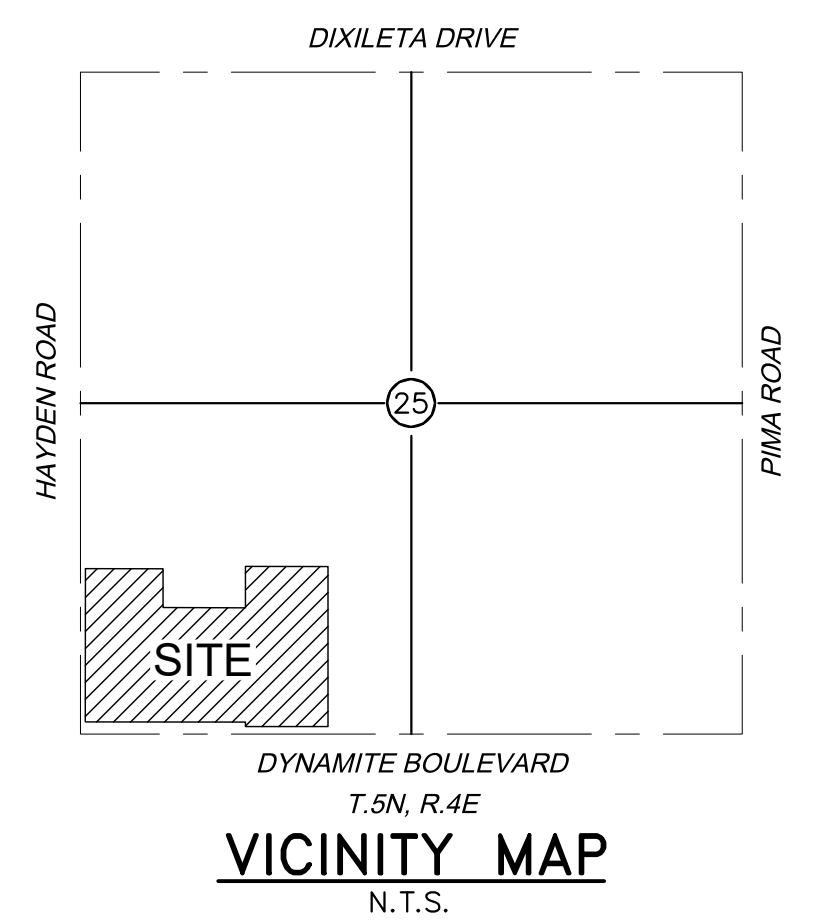
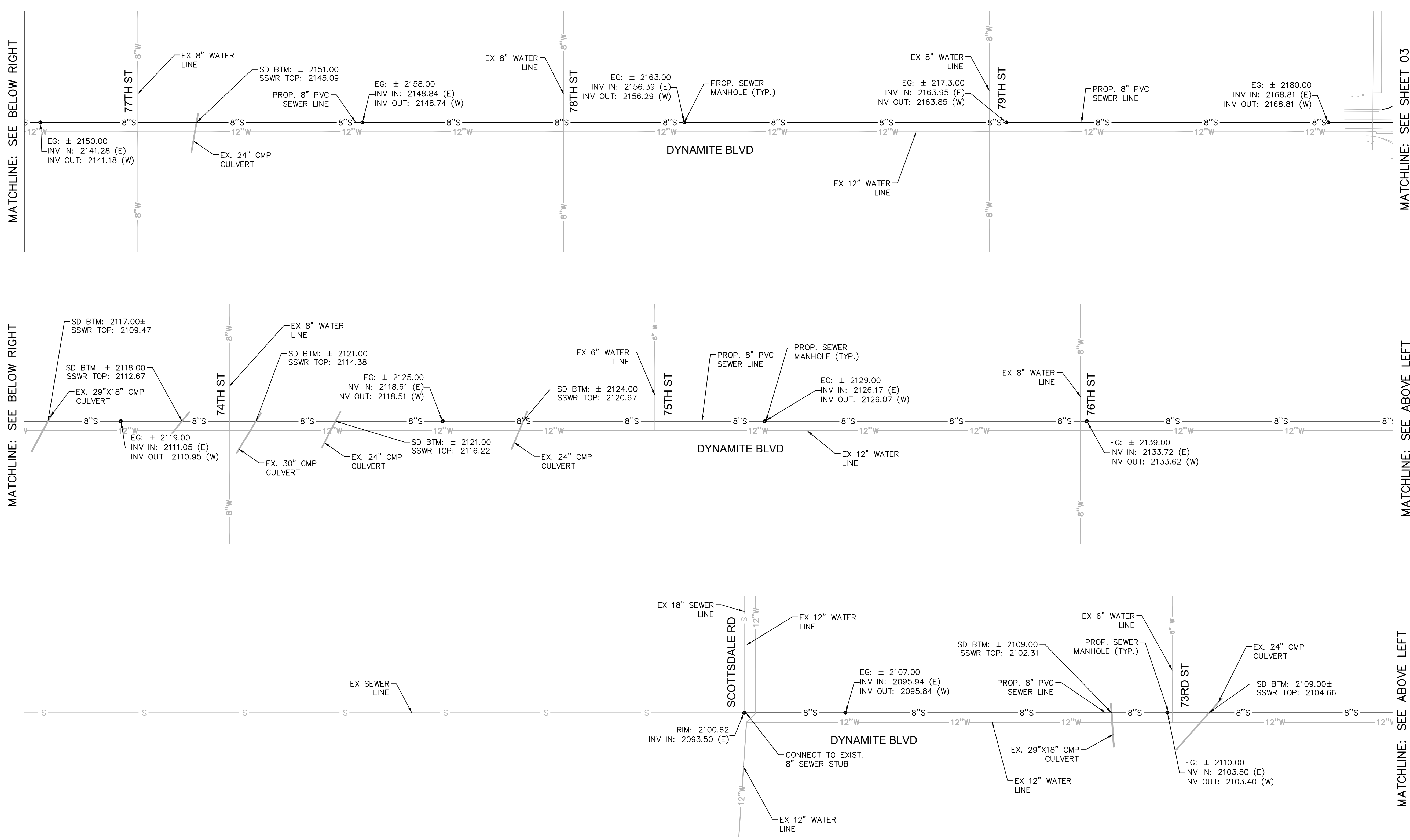
DRAWING NAME  
SUBDIVISION PLAN

02 OF 07

NO. \_\_\_\_\_ BY DATE \_\_\_\_\_  
 REVISION \_\_\_\_\_



K:\\_VHX\_Civil\291641000 - 84th and Dynamite\CADD\Preliminary\Pln\291641000.dwg Jun 09, 2026 David.Swift  
 XREFS: K:\\_VHX\_Civil\291641000 - 84th and Dynamite\CADD\291641000.dwg, K:\\_VHX\_Civil\291641000 - 84th and Dynamite\CADD\291641000.dwg, K:\\_VHX\_Civil\291641000 - 84th and Dynamite\CADD\291641000.dwg  
 THIS DOCUMENT IS THE PROPERTY OF KIMLEY-HORN AND ASSOCIATES, INC. IT IS TO BE USED ONLY FOR THE SPECIFIC PROJECT AND CLIENT FOR WHICH IT WAS PREPARED. REUSE OR REPRODUCTION OF THIS DOCUMENT WITHOUT WRITTEN AUTHORIZATION AND ADAPTATION BY KIMLEY-HORN AND ASSOCIATES, INC. SHALL BE WITHOUT LIABILITY TO KIMLEY-HORN AND ASSOCIATES, INC.



NO.	REVISION	BY	DATE	APPR.

**Kimley»Horn**  
 © 2026 KIMLEY-HORN AND ASSOCIATES, INC.  
 7740 North 16th Street, Suite 300  
 Phoenix, Arizona 85020 (602) 944-5500

84TH AND DYNAMITE  
 SCOTTSDALE, ARIZONA  
 OFF-SITE UTILITY PLAN  
 OFF-SITE UTILITY PLAN

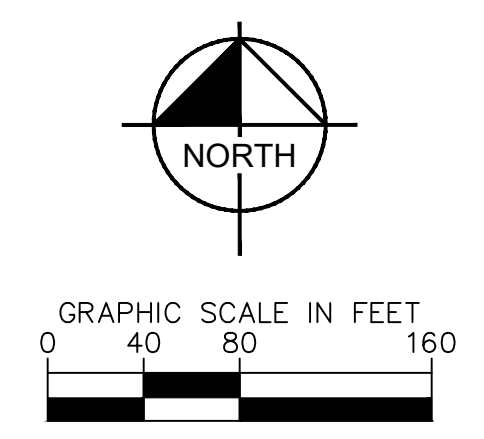
**PRELIMINARY**  
 FOR REVIEW ONLY  
 NOT FOR CONSTRUCTION

**Kimley»Horn**  
 ENGINEER: ZACH HILL  
 PE NO. 63454, DATE 06/26

PROJECT NO.  
 291641000

DRAWING NAME  
 OFF-SITE UTILITY PLAN

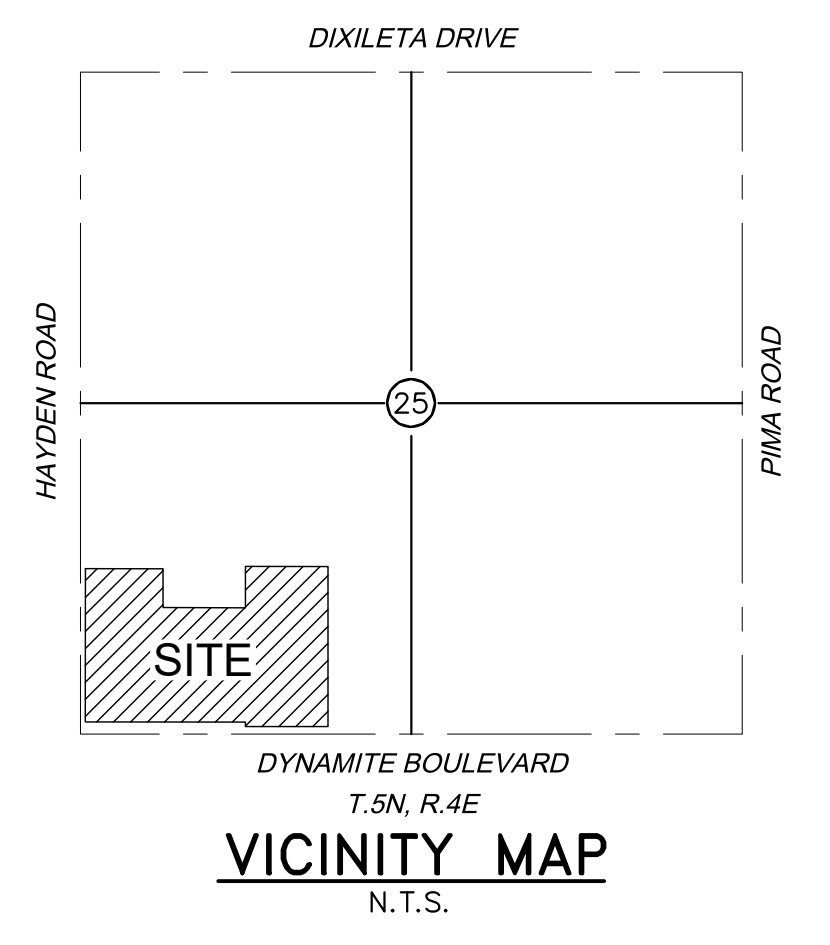
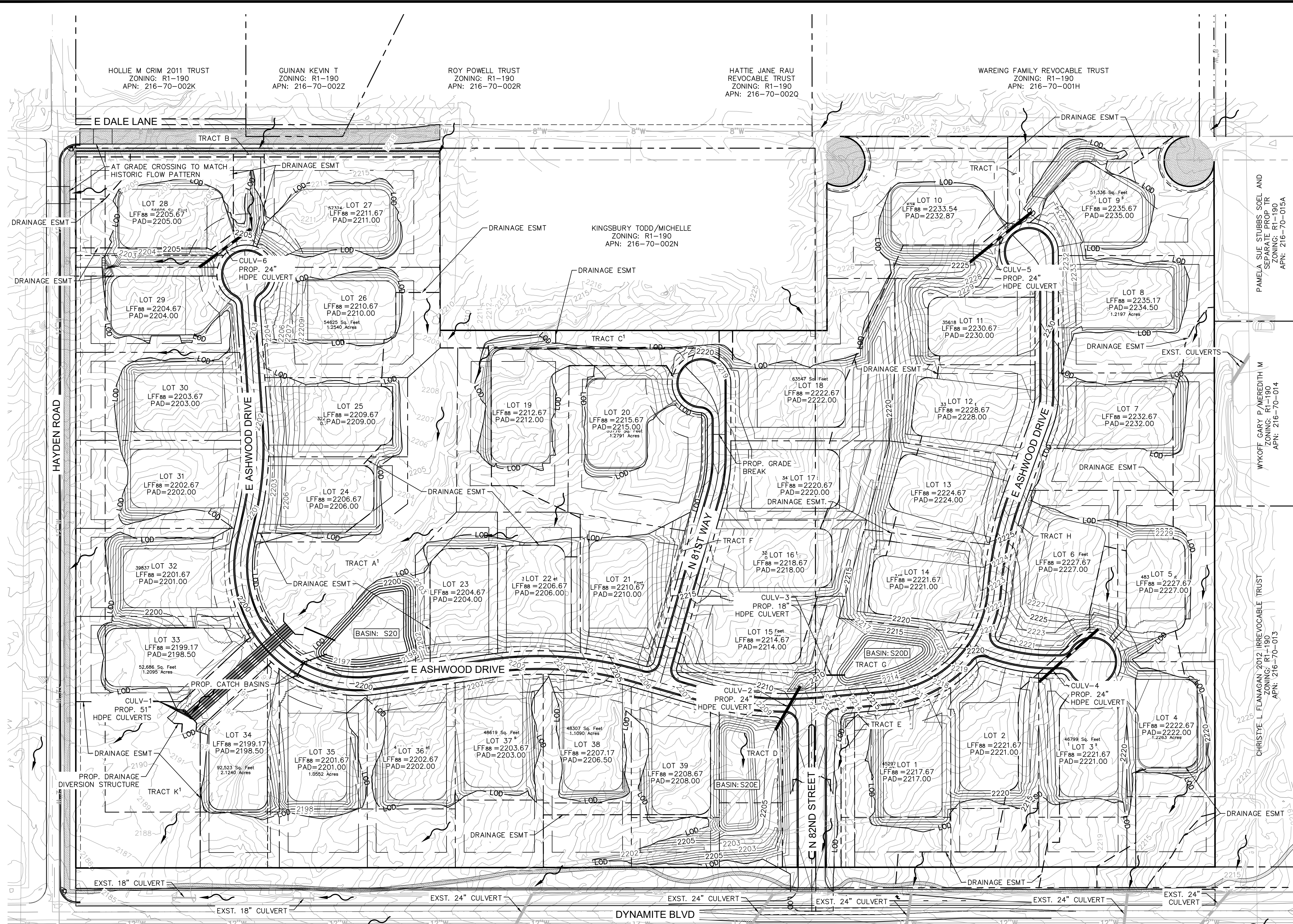
04 OF 07







K:\VHK\_Civil\291641000 - 84th and Dynamite CADD Preliminary Plan\291641000.dwg Jun 09, 2026 David Swift  
 XREFS: 291641000.dwg 291641000.dwg 291641000.dwg 291641000.dwg 291641000.dwg 291641000.dwg 291641000.dwg 291641000.dwg 291641000.dwg 291641000.dwg  
 OF AND UNPUBLISHED RELIANCE ON THIS DOCUMENT WITHOUT WRITTEN AUTHORIZATION AND ADAPTATION BY KIMLEY-HORN AND ASSOCIATES, INC.



NO.	REVISION	BY	DATE	APPR.

**Kimley»Horn**  
 © 2026 KIMLEY-HORN AND ASSOCIATES, INC.  
 7740 North 16th Street, Suite 300  
 Phoenix, Arizona 85020 (602) 944-9500

SCALE (H): 1"=80'  
 SCALE (V): NONE  
 DESIGNED BY: BRJ  
 DRAWN BY: LMW  
 CHECKED BY: BRJ  
 DATE: 6/9/2026

84TH AND DYNAMITE  
 SCOTTSDALE, ARIZONA  
 PRELIMINARY PLAN  
 PRELIMINARY GRADING AND DRAINAGE PLAN

PRELIMINARY  
 FOR REVIEW ONLY  
 NOT FOR CONSTRUCTION  
**Kimley»Horn**  
 ENGINEER: ZACH HILL  
 PE NO. 63454, DATE 06/26

PROJECT NO.  
 291641000  
 DRAWING NAME  
 GD  
 07 OF 07

