

DEVELOPMENT REVIEW BOARD REPORT



Meeting Date: February 4, 2021
General Plan Element: *Character and Design*
General Plan Goal: *Foster quality design that enhances Scottsdale as a unique southwestern desert community.*

ACTION

Cavasson Retail 6-DR-2020	Request by owner for approval of a site plan, landscape plan and building elevations for a new single-story, 15,000 square foot commercial shell building, designed to accommodate retail/restaurant uses, located on a +/- 5-acre site at the northwest corner of Hayden Road and Loop 101.
--	--

SUMMARY

Staff Recommendation

Approve, subject to the attached stipulations (Attachment #15)

Key Issues

- None

Items for Consideration

- Conformance with Development Review Board Criteria – staff confirms
- Integration of Sensitive Design Principles – staff confirms
- No community input received as of the date of this report

BACKGROUND

Location: 7965 E. Cavasson Boulevard

Zoning: Planned Community District, Planned Airpark Core Development (P-C PCP)

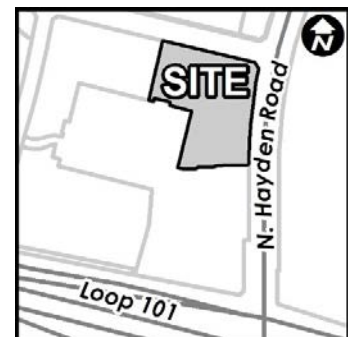
Adjacent Uses

North: Vacant (future hotel; 5-DR-2020)

East: Vacant

South: Corporate office, 5 stories, 74 feet in height, under construction (6-DR-2019)

West: Parking Garage



Property Owner

NRI-Cavasson, LLC

Applicant

Ken Miller, Butler Design Group
(602) 957-1800

Architect/Designer

Butler Design Group

Engineer

Hubbard Engineering

DEVELOPMENT PROPOSAL

The applicant seeks approval for a single-story retail building and associated site improvements. With the exception of a bank of spaces along the entry drive, all patron and employee parking is located west of the site in a centralized parking garage (3,750 spaces), intended to provide parking for the entire campus at build-out. Site highlights include an expansive patio/terrace space along the east side of the building and a strong pedestrian connection to the future hotel north of the site.

Development Review Board Criteria

Staff confirms that the development proposal generally meets the applicable Development Review Board Criteria. For a detailed analysis of the Criteria, please see Attachment #13.

STAFF RECOMMENDED ACTION

Staff recommends that the Development Review Board approve the Cavasson Retail development proposal per the attached stipulations, finding that the Character and Design Element of the General Plan, Greater Airpark Character Area Plan and Development Review Board Criteria have been met.

RESPONSIBLE DEPARTMENTS

STAFF CONTACTS

Planning and Development Services
Current Planning Services

Greg Bloemberg
Senior Planner
480-312-4306 gbloemberg@ScottsdaleAZ.gov

APPROVED BY



Greg Bloemberg, Report Author

1/12/2021

Date

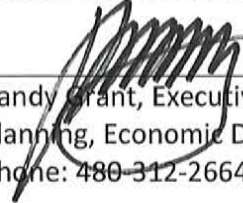


Brad Carr, AICP, LEED-AP, Planning & Development Area Manager
Development Review Board Liaison

1/25/2021

Date

Phone: 480-312-7713 Email: bcarr@scottsdaleaz.gov



Randy Grant, Executive Director

Planning, Economic Development, and Tourism

Phone: 480-312-2664 Email: rgrant@scottsdaleaz.gov

1/27/21

Date

ATTACHMENTS

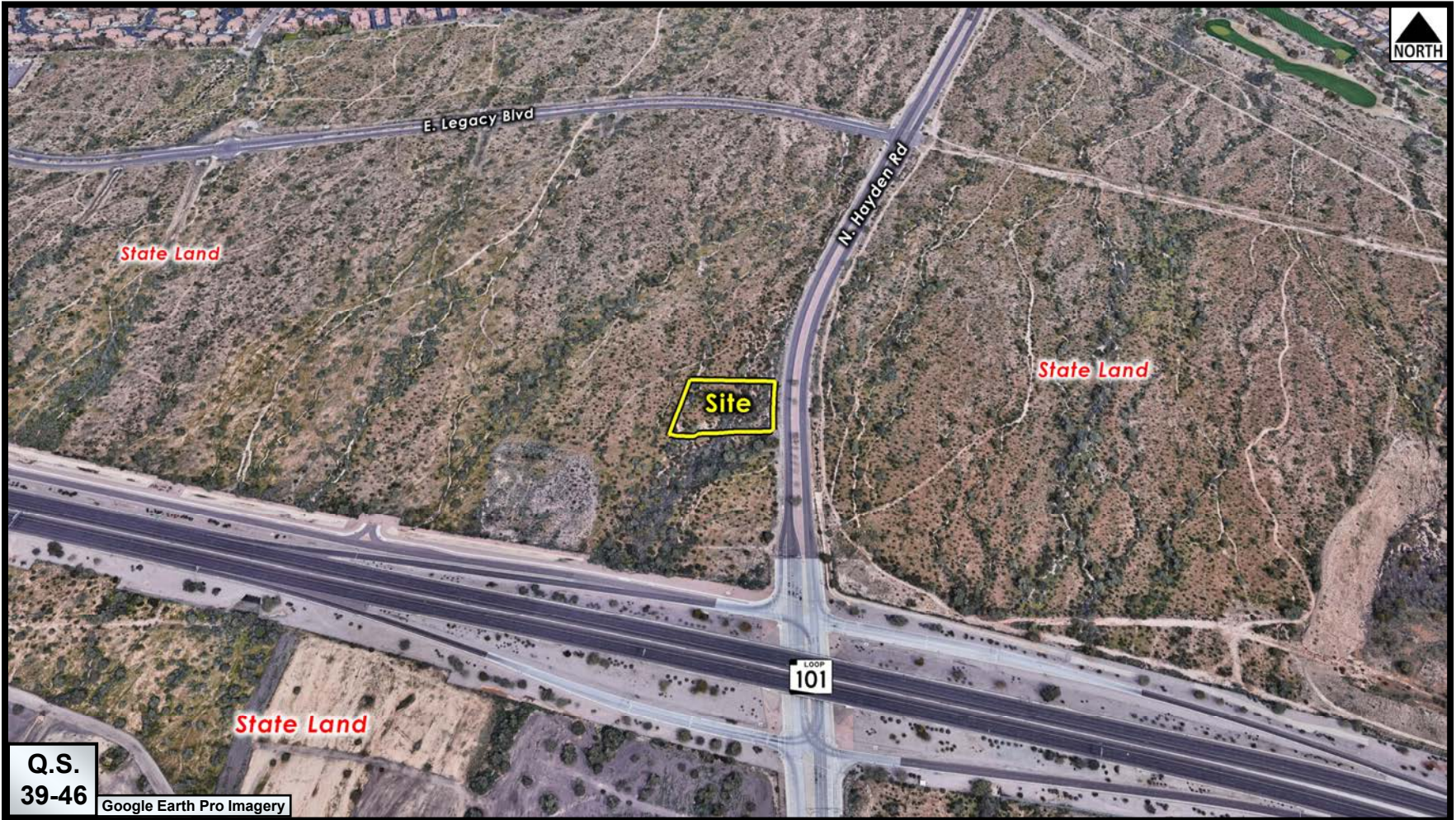
1. Context Aerial
2. Close-up Aerial
3. Combined Context Aerial and Site Plan
4. Site Plan
5. Open Space Plan
6. Landscape Plan
7. Building Elevations (color)
8. Perspectives
9. Materials and Colors Board
10. Lighting Site Plan
11. Exterior Lighting Cutsheets
12. Applicant's Narrative
13. Development Review Board Criteria Analysis
14. Development Information
15. Stipulations / Zoning Ordinance Requirements
16. Zoning Map



Context Aerial

6-DR-2020

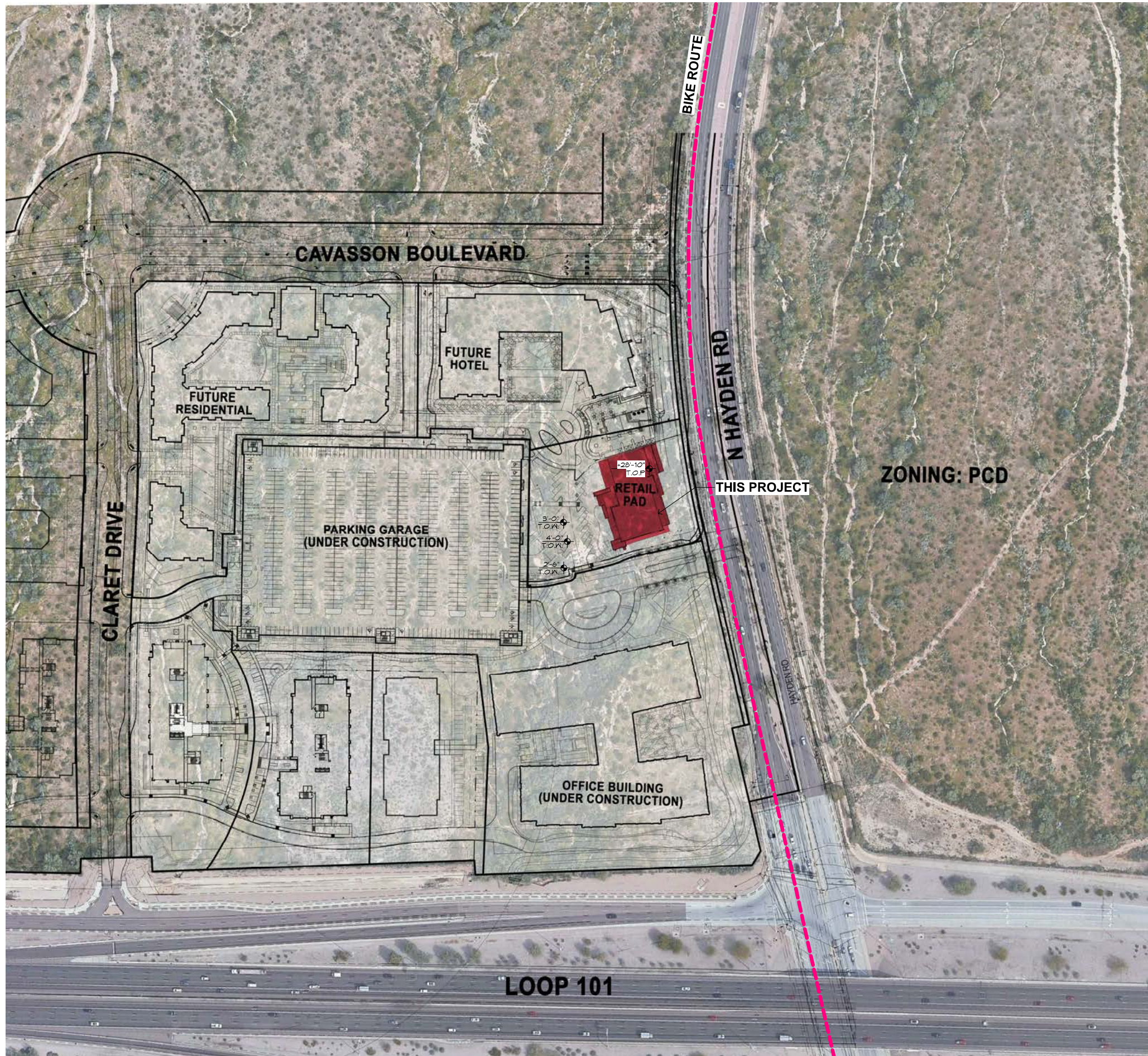
ATTACHMENT #1



Close-up Aerial

6-DR-2020

ATTACHMENT #2



Butler Design Group Inc.
 architects & planners
 5017 East Washington St. #107
 Phoenix, Arizona 85034
 Phone 602-957-1800

PRELIMINARY
 NOT FOR
 CONSTRUCTION

OWNERSHIP OF INSTRUMENTS OF SERVICE
 All drawings, specifications, reports, and other documents prepared by the design professional as instruments of service shall remain the property of the design professional. The design professional shall retain the right to use, modify, and otherwise disseminate the design professional's work, including the copyright therein.

CAVASSON
 RETAIL BUILDING
 SCOTTSDALE, AZ

Case #:
 Plan Check #:
 Date: 2020.01.31
 Revisions:

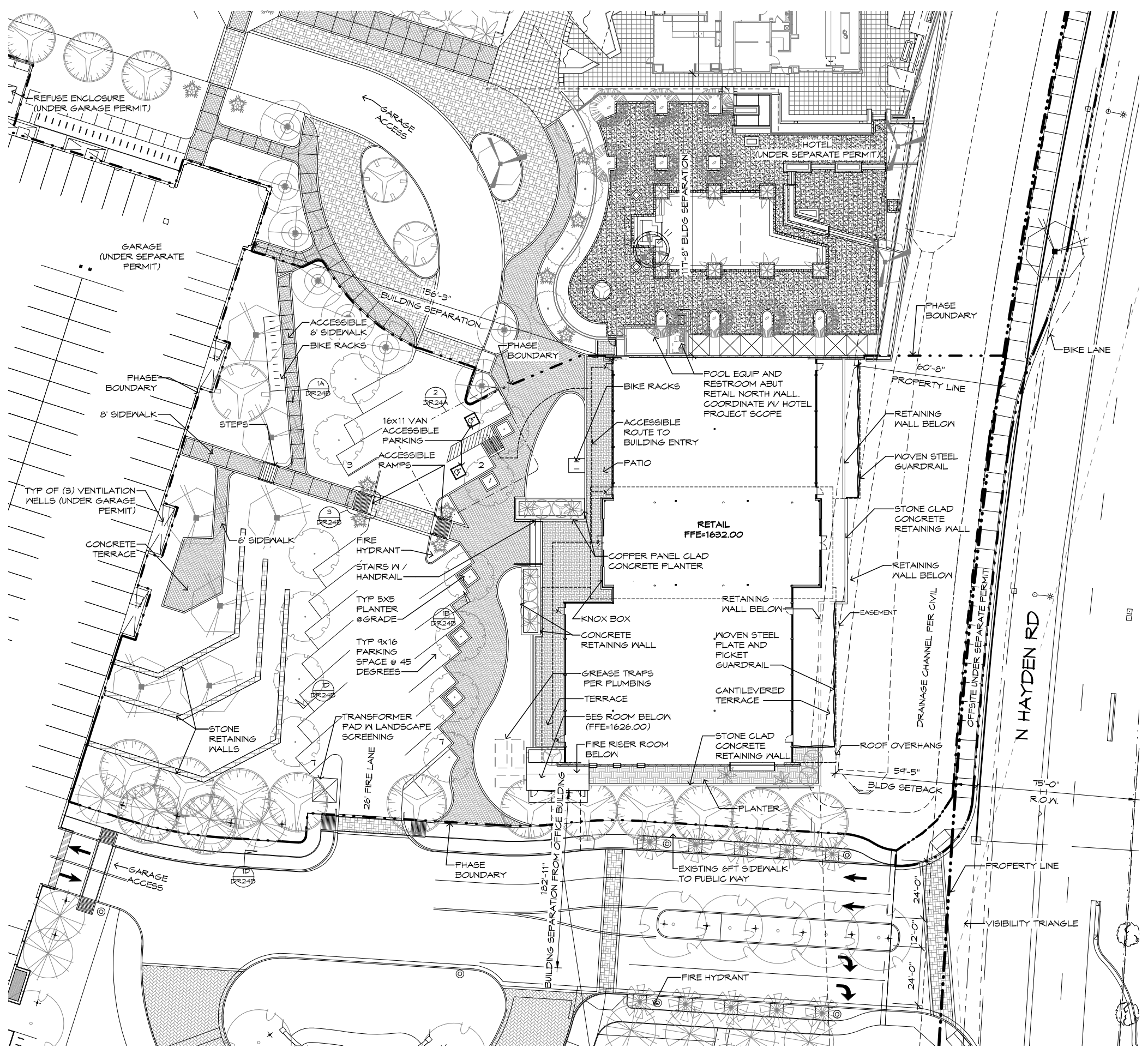
Project Number: 15148.300
 Drawn By: PP
 Title: CONTEXT AERIAL W/SITE IMPROVEMENTS

DR22

6-DR-2020
 6/29/2020

ATTACHMENT #3





SITE DATA

APN:
212-34-159D

ADDRESS:
1965 E CAVASSON BOULEVARD, SCOTTSDALE, AZ 85255

SITE AREAS
 MASTER PLAN AREA 30.1 AC (1,311,411 SF)
 GROSS PARCEL BOUNDARY 5.35 AC (233,046 SF)
 GROSS PHASE BOUNDARY 1.59 AC (69,235 SF)

EXISTING ZONING
PCD

ADJACENT SITES ZONING
PCD

BUILDING TYPE
TYPE V-B

BUILDING AREA
 RETAIL BUILDING 15,413 GSF
 LOT COVERAGE 20,920 SF (30% OF NET SITE AREA)

OPEN SPACE
 REQUIRED 17,308 SF (25%)
 PROVIDED 31,850 SF (46%)

BUILDING HEIGHT
 ALLOWABLE 60'
 PROVIDED 34' BUILDING HEIGHT/ 1-STORY

BUILDING SETBACKS
SETBACKS AND BUILDING SEPARATION ARE AS DIMENSIONED ON SITE PLAN

PARKING REQUIRED
 PARKING REQUIRED: 56 SPACES (1:250 GSF)
 ADA PARKING REQUIRED: 3 SPACES (5%)

SURFACE STREET PARKING PROVIDED
 STANDARD PARKING: 17 SPACES
 VAN ADA PARKING: 2 SPACES

GARAGE PARKING
 STANDARD PARKING: 36 SPACES
 VAN ADA PARKING: 1 SPACES

TOTAL SPACES 56 SPACES

BIKE PARKING
 BIKE PARKING REQUIRED: 6 SPACES (1:10 VEHICLE)
 BIKE PARKING PROVIDED: 24 SPACES

REFUSE
PRIVATE REFUSE COLLECTION PROVIDED BY OTHERS. SEE MASTER PLAN FOR TRASH ENCLOSURE LOCATION.

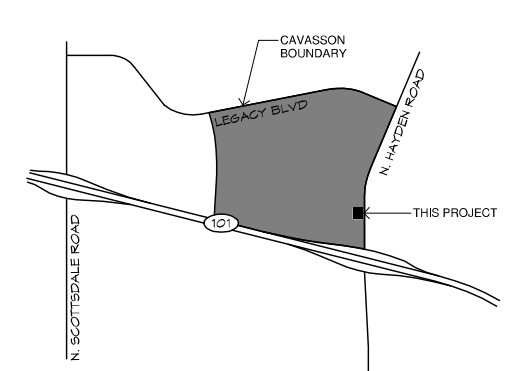
Bdg
Butler Design Group Inc.
architects & planners
5017 East Washington St. #107
Phoenix, Arizona 85034
Phone 602-957-1800

PRELIMINARY
NOT FOR
CONSTRUCTION

STATE OF ARIZONA DEPARTMENT OF INSTRUMENTS OF SERVICE
All drawings, plans, specifications prepared by the registered architect and other professionals shall remain the property of the design professional. The design professional shall retain all copyright, fee, ownership and other reserved rights, including the right to reuse.

CAVASSON
RETAIL BUILDING
SCOTTSDALE, AZ

VICINITY MAP



Case #:
Plan Check #:
Date: 2020.04.24

Revisions:

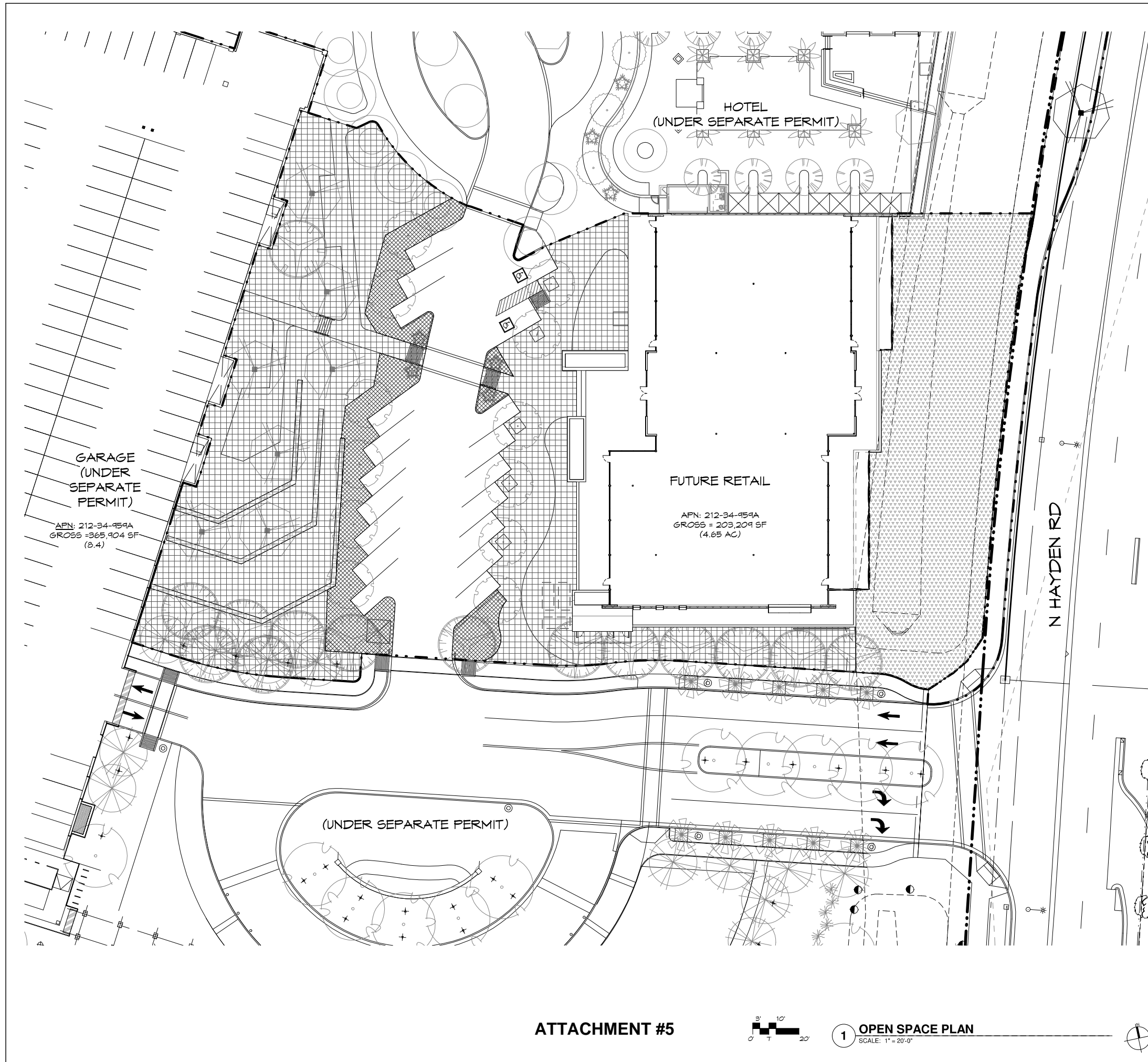
Project Number: 15148.300
 Drawn By: PP
 Title: SITE PLAN

ATTACHMENT #4

1 SITE DEVELOPMENT PLAN
SCALE: 1" = 20'-0"

DR23


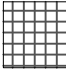
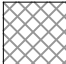
6-DR-2020
6/29/2020



OPEN SPACE DATA

PROJECT DATA ZONING: P-C PGP
 NET LOT AREA (PHASE BOUNDARY): 69,295 SQFT
 (OPEN SPACE PROVIDED) 39.6% ≥ (REQ. OPEN SPACE) 25%

OPEN SPACE LEGEND

-  DENOTES FRONT OPEN SPACE
10,864.58 SQFT
-  DENOTES OPEN SPACE OTHER THAN FRONTAL
OPEN SPACE
23,850.30 SQFT
-  DENOTES PARKING LOT LANDSCAPING
3,551.73 SQFT

OPEN SPACE CALCULATION

APN PARCEL NUMBER	PHASE SIZE SQFT	BUILDING FOOT PRINT	FRONTAGE SPACE	PAVEMENT	*OPEN SPACE	**OPEN SPACE %
212-34-459C	69,295	20,920	10,864.58	10,048.39	27,402.03	39.6%

*OPEN SPACE = GROSS LOT SIZE - BUILDING FOOTPRINT - FRONTAGE SPACE - PAVED AREAS
 **OPEN SPACE % = OPEN SPACE / PHASE SIZE

Bdg
Butler Design Group Inc.
 architects & planners
 5017 East Washington St. #107
 Phoenix, Arizona 85034
 Phone 602-957-1800

PRELIMINARY
 NOT FOR
 CONSTRUCTION

STATEMENT OF INSTRUMENTS OF SERVICE
 All drawings, plans, specifications prepared by or for the undersigned and all documents or records shall remain the property of the undersigned and shall not be used for any other project without the written consent of the undersigned. The undersigned shall not be held responsible for any errors, omissions and other related items, including the results of the work.

CAVASSON
 RETAIL BUILDING
 SCOTTSDALE, AZ

Case #:
 Plan Check #:
 Date: 2020.04.24
 Revisions:

Project Number: 15148.300
 Drawn By:
 Title: OPEN SPACE PLAN

DR25

6-DR-2020
 6/29/2020

ATTACHMENT #5



1 OPEN SPACE PLAN
 SCALE: 1" = 20'-0"

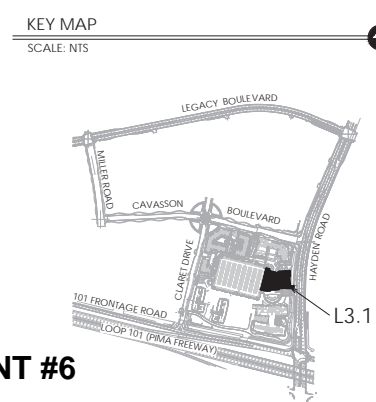
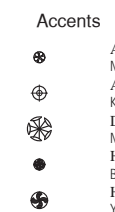
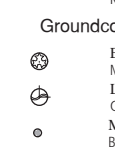
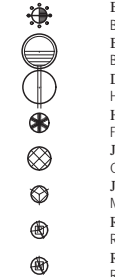
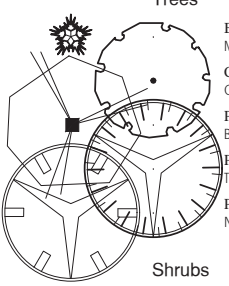
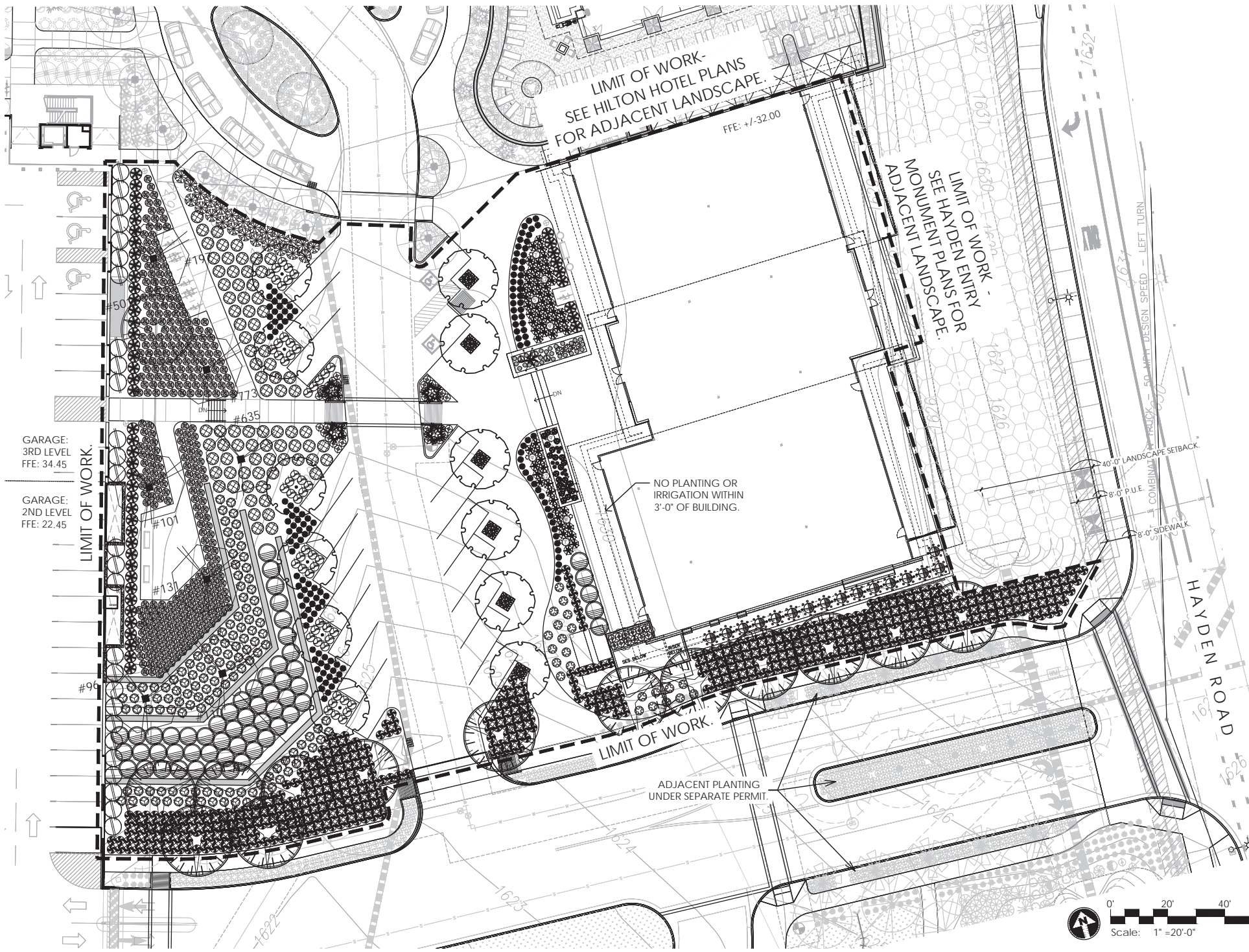


NOTES:

- THE CONTRACTOR SHALL INSTALL NDS ROOT BARRIER PANELS AVAILABLE IN 20' ROLLS (OR APPROVED EQUAL) AT ALL TREES WITHIN 7'-0" FEET OF HARDSCAPE ELEMENTS INCLUDING (BUT NOT LIMITED TO) SIDEWALKS, ASPHALT, CONCRETE SLABS / FOOTINGS AND STRUCTURES. INSTALL PER ROOT BARRIER DETAIL. CONTRACTOR SHALL SUBMIT SPECIFICATION SHEETS OF PROPOSED ROOT BARRIER PANELS TO THE LANDSCAPE ARCHITECT FOR APPROVAL PRIOR TO INSTALLATION.
- CONTRACTOR IS RESPONSIBLE FOR ALL SHIPPING / DELIVERY COSTS ASSOCIATED TO HAVE PLANT MATERIAL SHIPPED TO THE SITE FOR ANY OUT OF STATE MATERIALS. THIS INCLUDES, BUT IS NOT LIMITED TO, SATISFYING ALL DEPT. OF AGRICULTURE REQUIREMENTS ASSOCIATED WITH OBTAINING APPROVAL.
- LANDSCAPE ARCHITECT TO APPROVE FINAL GRADING. PLANTING SHALL NOT OCCUR UNTIL FINAL GRADING IS APPROVED.
- LOCATIONS OF PLANTS SHOWN ON DRAWING ARE APPROXIMATE. LANDSCAPE ARCHITECT TO FIELD APPROVE ALL FINAL LOCATIONS PRIOR TO INSTALLATION. LANDSCAPE CONTRACTOR HAS OPTION TO FLAG LOCATIONS OR PLACE CONTAINER MATERIAL.
- DUE TO SEASONAL AND OR UNFORESEEN CONSTRAINTS SOME PLANT MATERIAL WILL POSSIBLY NOT BE AVAILABLE AT TIME OF INSTALLATION. LANDSCAPE CONTRACTOR TO SUBMIT LIST OF ANY NON-AVAILABLE MATERIAL TO LANDSCAPE ARCHITECT FOR REPLACEMENTS TO BE SELECTED.
- ALL PLANT MATERIAL IS TO BE RETAIL QUALITY.
- LANDSCAPE CONTRACTOR TO PROVIDE PICTURES OR SAMPLES OF ALL PLANT MATERIAL PRIOR TO INSTALLATION FOR APPROVAL.
- ALL PLANT MATERIAL SOURCED FROM OUTSIDE OF ARIZONA TO BE PROPERLY ACCLIMATED TO ARIZONA CLIMATE DEPENDING ON TIME OF YEAR OF INSTALLATION.
METHODS: SUN-SCREEN CLOTH/FABRIC TO BE INSTALLED ABOVE PLANT MATERIAL.
- ALL CACTI OR ACCENT MATERIAL WITH SHARP THORNS TO BE PLANTED A MINIMUM OF 3'-0" CLEAR FROM SIDEWALKS
- LANDSCAPE ARCHITECT RESERVES THE RIGHT TO REFUSE OR SEND BACK ANY PLANT MATERIAL THAT DOES NOT MEET QUALITY STANDARDS.
- ALL GRADES ARE FOR DESIGN INTENT ONLY. REFER TO CIVIL GRADING PLANS.

RETAIL BUILDING PLANT MATERIALS LEGEND

Sym.	Plant Name	Size	Qty	Remarks
Trees				
	Brahea armata	8' tall	4	
	Mexican Blue Palm	8' tall	4	
	Chitalpa tashkentensis	36" box	12	
	Chitalpa	36" box	12	
	Parkinsonia florida	site salvage	7	
	Blue Palo Verde	site salvage	7	
	Prosopis hybrid 'Phoenix'	36" box	13	
	Thornless Mesquite	36" box	13	
	Prosopis velutina	site salvage	1	
	Native Mesquite	site salvage	1	
Shrubs				
	Bougainvillea 'Barbara Karst'	5 gal.	16	
	Bougainvillea	5 gal.	16	
	Bougainvillea 'Rosenka'	5 gal.	57	
	Bougainvillea	5 gal.	57	
	Dodonaea viscosa	5 gal.	27	
	Hop Bush	5 gal.	27	
	Hamelia patens	5 gal.	51	
	Firecracker Bush	5 gal.	51	
	Justicia californica	5 gal.	80	
	Chuparosa	5 gal.	80	
	Justicia spicigera	5 gal.	127	
	Mexican Honeysuckle	5 gal.	127	
	Ruellia brittoniana	5 gal.	164	Purple Flower
	Ruellia brittoniana	5 gal.	166	White Flower
	Ruellia	5 gal.	166	White Flower
Groundcovers				
	Eremophila glabra	5 gal.	22	
	Mingihew Gold	5 gal.	22	
	Lantana camara 'Gold Mound'	5 gal.	53	
	Gold Mound Lantana	5 gal.	53	
	Melampodium leucanthum	5 gal.	25	
	Blackfoot Daisy	5 gal.	25	
Accents				
	Aloe barbadensis	5 gal.	48	
	Medicinal Aloe	5 gal.	48	
	Anigozanthos flavidus	5 gal.	51	
	Kangaroo Paw	5 gal.	51	
	Dasyliro longissimum	5 gal.	24	
	Mexican Grass Tree	5 gal.	24	
	Hesperaloe parviflora 'Perpa'	Brakelights	146	
	Brakelights Red Yucca	3 gal.	146	
	Hesperaloe parviflora-yellow	5 gal.	505	
	Yellow Hesperaloe	5 gal.	505	
Cacti				
	Agave "AZ Smiles"	5 gal.	3	
	AZ Smiles Agave	5 gal.	3	
	Alluaudia procera	5 gal.	61	
	Madagascan Ocotillo	5 gal.	61	
	Carnegiea gigantea	see plan	9	
	Saguaro	see plan	9	
	Ferocactus gracilis	12" diameter.	3	
	Fire Barrel Cactus	12" diameter.	3	
	Fouquieria splendens	24" box	2	
	Ocotillo	24" box	2	
	Opuntia basilaris hybrid 'Baby Rita'	5 gal.	21	
	Baby Rita Prickly Pear	5 gal.	21	
	Pachycreus schottii f. monstrosus	1- (4)	9	Single arms
	Totem Pole Cactus	3- (3)	9	Single arms
	Yucca elata	5- (2)	9	Single arms
	Soapstone Yucca	24" box	2	
INERTS				
	AREAS ADJACENT TO RETAIL BUILDING AND GARAGE TO RECEIVE 3/4" SCREENED EXPRESS GOLD DECOMPOSED GRANITE FROM GRANITE EXPRESS 480-354-6809. (2" DEPTH MINIMUM.)			



GREY PICKETT
landscape architecture community design
7144 e stinson drive, suite 203
scottsdale, arizona 85251
480-609-0099 480-609-0068



CAVASSON
Cavasson Retail
Scottsdale AZ, 85255

CALL TWO WORKING DAYS
(602) 263-1100
1-800-STAKE-IT
(OUTSIDE MARICOPA COUNTY)

revisions:
▲
▲
▲
▲
▲
▲
project #: BDG025 scale: 1" = 20'-0"
issued for: Design Review
drawn by: TEAM date: 04/24/2020
drawing: Planting Plan

L3.1
of

ATTACHMENT #6

PRELIMINARY
NOT FOR
CONSTRUCTION

OWNERSHIP OF INSTRUMENTS OF SERVICE
The design professional shall retain the copyright in the design and all instruments of service that remain the property of the design professional. The design professional shall retain all contract fee, including and without limitation, including the copyright therein.



1 NORTH ELEVATION
SCALE: 1/8" = 1'-0"



2 SOUTH ELEVATION
SCALE: 1/8" = 1'-0"

GENERAL ELEVATION NOTES

- A. GRADES AT PERIMETER OF BUILDING ARE TO BE COORDINATED WITH THE CIVIL DOCUMENTS FOR ACTUAL FINISH GRADE LOCATIONS.
- B. REFER TO WINDOW TYPES FOR TEMPERED GLASS LOCATIONS.
- C. PAINT TRANSITIONS ARE TO BE COORDINATED WITH THE ARCHITECT PRIOR TO APPLICATION.
- D. SEE ELECTRICAL DOCUMENTS FOR EXTERIOR LIGHTING FIXTURE DATA.
- E. PROVIDE BUILDING ADDRESS NUMBERS AT STREET SIDE OF BUILDING AS SHOWN ON THE EXTERIOR ELEVATIONS.
- F. SIGNAGE BY OTHERS, UNDER SEPARATE PERMIT. PROVIDE ELECTRICAL AS REQUIRED.
- G. ALL EXPOSED METAL FLATES AND EXPOSED FLASHING ARE TO BE PAINTED TO MATCH ADJACENT BUILDING COLOR, UNLESS NOTED OTHERWISE.
- H. ALL SITE EQUIPMENT SHALL BE PAINTED TO MATCH ADJACENT BUILDING, SITE WALL, ETC.
- I. WHEN TWO DISSIMILAR MATERIALS ABUT, JOINT SEALANT TO BE COLOR MATCHED TO THE MATERIAL IN THE SAME PLANE AS THE SEALANT.
- J. ALL ARCHITECTURALLY EXPOSED STRUCTURAL STEEL (A588) TO BE FREE OF DEFECTS, STAMPS, MARKS AND IMPERFECTIONS.
- K. ALL EXPOSED WELDS TO BE CONTINUOUS OR OF EQUAL LENGTH AND SPACINGS. BONDO FILLER MAY BE REQUIRED TO MIMIC WELDS AT SOME AREAS.

MATERIAL / COLOR SCHEDULE

MARK	DESCRIPTION	FINISH/COLOR	MODEL	MANUFACTURER	COMMENTS
AL01	ALUMINUM	CLEAR ANODIZED	---	---	WINDOW/DOOR SYSTEMS
CC01	BOARD FORMED CONCRETE WALL	TBD	---	TBD	
EFO1	EIFS	MATCH LIMESTONE	TBD	DUNN EDWARDS	
GL01	LOW-E GLASS	CRYSTAL GREY	SNX 62/27	GUARDIAN	
MT01	ALUMINUM	COPPER ANODIZED	---	DRI-DESIGN	---
MT02	BOX-RIB METAL PANEL	NATIONWIDE GREY	TBD	TBD	20 GA STEEL
MT03	METAL FASCIA	NATIONWIDE GREY	TBD	TBD	22 GA STEEL
ST01	TEXAS LIMESTONE	BUFF	---	---	---
ST03	"DC RANCH" COBBLE STONE	DC RANCH STONE	---	---	---
ND01	GLU-LAM BEAM	DOUGLAS FIR	---	---	WIRE BRUSH FINISH

KEYNOTES

Case #:
Plan Check #:
Date: 2020.01.31

Revisions:

Project Number: 15148.300

Drawn By: JS

Title: BUILDING ELEVATIONS

DR37C

6-DR-2020

6/29/2020

PRELIMINARY
NOT FOR
CONSTRUCTION

OWNERSHIP OF INSTRUMENTS OF SERVICE
The design, plan, specification, contract, drawings, notes, and other documents and materials prepared by the design professional in connection with these drawings shall remain the property of the design professional and shall not be used for any other project without the written consent of the design professional.

CAVASSON

RETAIL BUILDING
SCOTTSDALE, AZ



1 EAST ELEVATION
SCALE: 1/8" = 1'-0"



2 WEST ELEVATION
SCALE: 1/8" = 1'-0"

GENERAL ELEVATION NOTES

- A. GRADES AT PERIMETER OF BUILDING ARE TO BE COORDINATED WITH THE CIVIL DOCUMENTS FOR ACTUAL FINISH GRADE LOCATIONS.
- B. REFER TO WINDOW TYPES FOR TEMPERED GLASS LOCATIONS.
- C. PAINT TRANSITIONS ARE TO BE COORDINATED WITH THE ARCHITECT PRIOR TO APPLICATION.
- D. SEE ELECTRICAL DOCUMENTS FOR EXTERIOR LIGHTING FIXTURE DATA.
- E. PROVIDE BUILDING ADDRESS NUMBERS AT STREET SIDE OF BUILDING AS SHOWN ON THE EXTERIOR ELEVATIONS.
- F. SIGNAGE BY OTHERS, UNDER SEPARATE PERMIT, PROVIDE ELECTRICAL AS REQUIRED.
- G. ALL EXPOSED METAL PLATES AND EXPOSED FLASHINGS ARE TO BE PAINTED TO MATCH ADJACENT BUILDING COLOR, UNLESS NOTED OTHERWISE.
- H. ALL SITE EQUIPMENT SHALL BE PAINTED TO MATCH ADJACENT BUILDING, SITE WALL, ETC.
- I. WHEN TWO DISSIMILAR MATERIALS ABUT, JOINT SEALANT TO BE COLOR MATCHED TO THE MATERIAL IN THE SAME PLANE AS THE SEALANT.

- J. ALL ARCHITECTURALLY EXPOSED STRUCTURAL STEEL (AESS) TO BE FREE OF DEFECTS, STAMPS, MARKS AND IMPERFECTIONS.
- K. ALL EXPOSED WELDS TO BE CONTINUOUS OR OF EQUAL LENGTH AND SPACING. BONDO FILLER MAY BE REQUIRED TO MIMIC WELDS AT SOME AREAS.

MATERIAL / COLOR SCHEDULE

MARK	DESCRIPTION	FINISH/COLOR	MODEL	MANUFACTURER	COMMENTS
ALO1	ALUMINUM	CLEAR ANODIZED	---	---	WINDOW/DOOR SYSTEMS
CCO1	BOARD FORMED CONCRETE WALL	TBD	---	TBD	
EFO1	EIFS	MATCH LIMESTONE	TBD	DUNN EDWARDS	
GLO1					
MT01	ALUMINUM	COPPER ANODIZED	---	DRI-DESIGN	---
MT02	BOX-RIB METAL PANEL	NATIONWIDE GREY	TBD	TBD	20 GA STEEL
MT03	METAL FASCIA	NATIONWIDE GREY	TBD	TBD	22 GA STEEL
ST01	TEXAS LIMESTONE	BUFF	---	---	---
ST03	"DC RANCH" COBBLE STONE	DC RANCH STONE	---	---	---
WDO1	GLU-LAM BEAM	DOUGLAS FIR	---	---	WIRE BRUSH FINISH

KEYNOTES

Case #:
Plan Check #:
Date: 2020.01.31

Revisions:

Project Number: 15148.300
Drawn By: PP
Title: BUILDING ELEVATIONS

DR37D

PRELIMINARY
NOT FOR
CONSTRUCTION

DISCLAIMER OF INSTRUMENTS OF SERVICE
All drawings, plans, specifications, schedules, reports, and other documents prepared by the design professional are for the use of the client only and are not to be used for any other purpose. The design professional shall not be held responsible for any errors or omissions in the drawings, plans, specifications, schedules, reports, and other documents prepared by the design professional, or for any consequences arising therefrom, including the cost of construction, delay, or other damages, resulting from the use of these drawings, plans, specifications, schedules, reports, and other documents for any purpose other than that intended by the design professional.



CAVASSON
RETAIL BUILDING
SCOTTSDALE, AZ

Case #: _____
Plan Check #: _____
Date: 2020.01.31
Revisions: _____

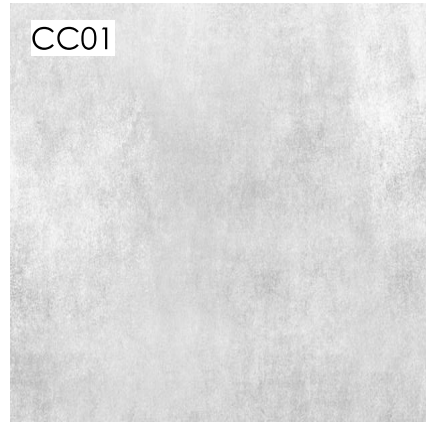
Project Number: 15148.300
Drawn By: _____
Title: EAST PERSPECTIVE

DR39B

ALUMINUM BY ATAS INTERNATIONAL INC.

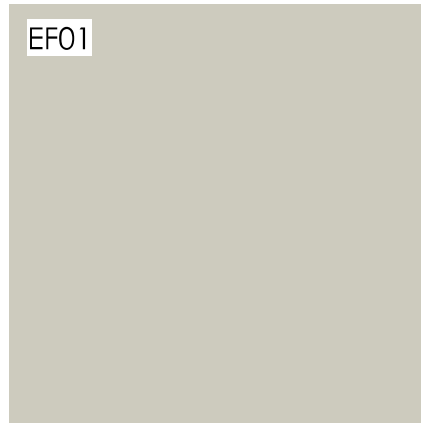


CLEAR ANODIZED ALUMINUM



BOARD FORMED CONCRETE

PAINT COLOR PALETTE BY DUNN EDWARDS



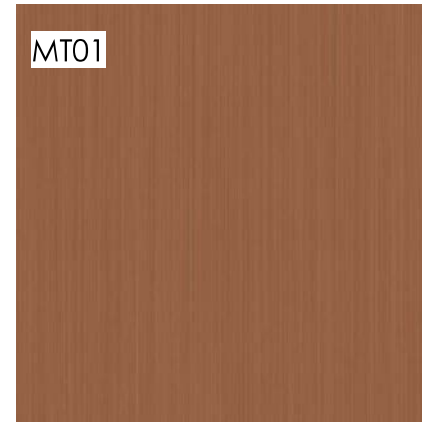
MUSLIN - DE 6227

GLAZING BY GUARDIAN



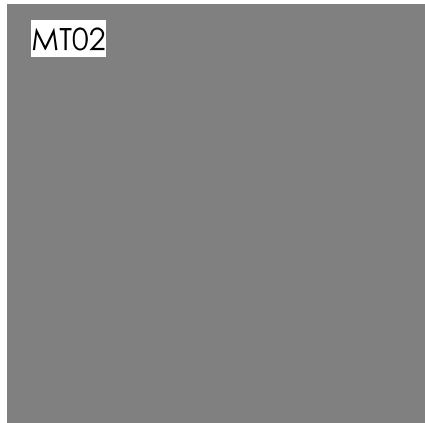
LOW-E GLASS CRYSTAL GREY

ALUMINUM BY DRI-DESIGN



COPPER ANODIZED

PAINT METALS BY -----



NATIONWIDE GREY

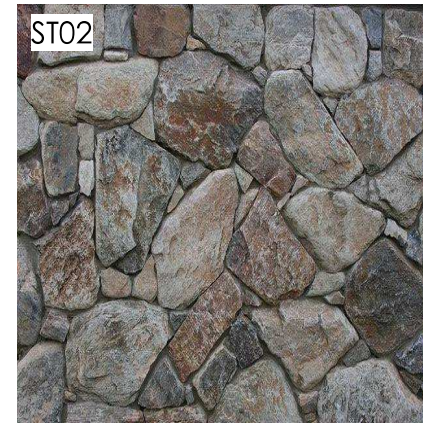


NATIONWIDE GREY

STONE BY SOLSTICE STONE



CORDOBA CREAM - RIVEN



DC RANCH COBBLE STONE

GLU-LAM BEAM



DOUGLAS FIR - CLEAR COAT



Butler Design Group Inc.
architects & planners
5017 East Washington St. #107
Phoenix, Arizona 85034
Phone 602-957-1800

PRELIMINARY
NOT FOR
CONSTRUCTION

OWNERSHIP OF INSTRUMENTS OF SERVICE
All drawings, specifications, reports, and other documents prepared by the design professional are the property of the design professional. The design professional shall retain the right to reuse, modify, and otherwise disseminate the design professional's work and other retained rights, including the copyright therein.

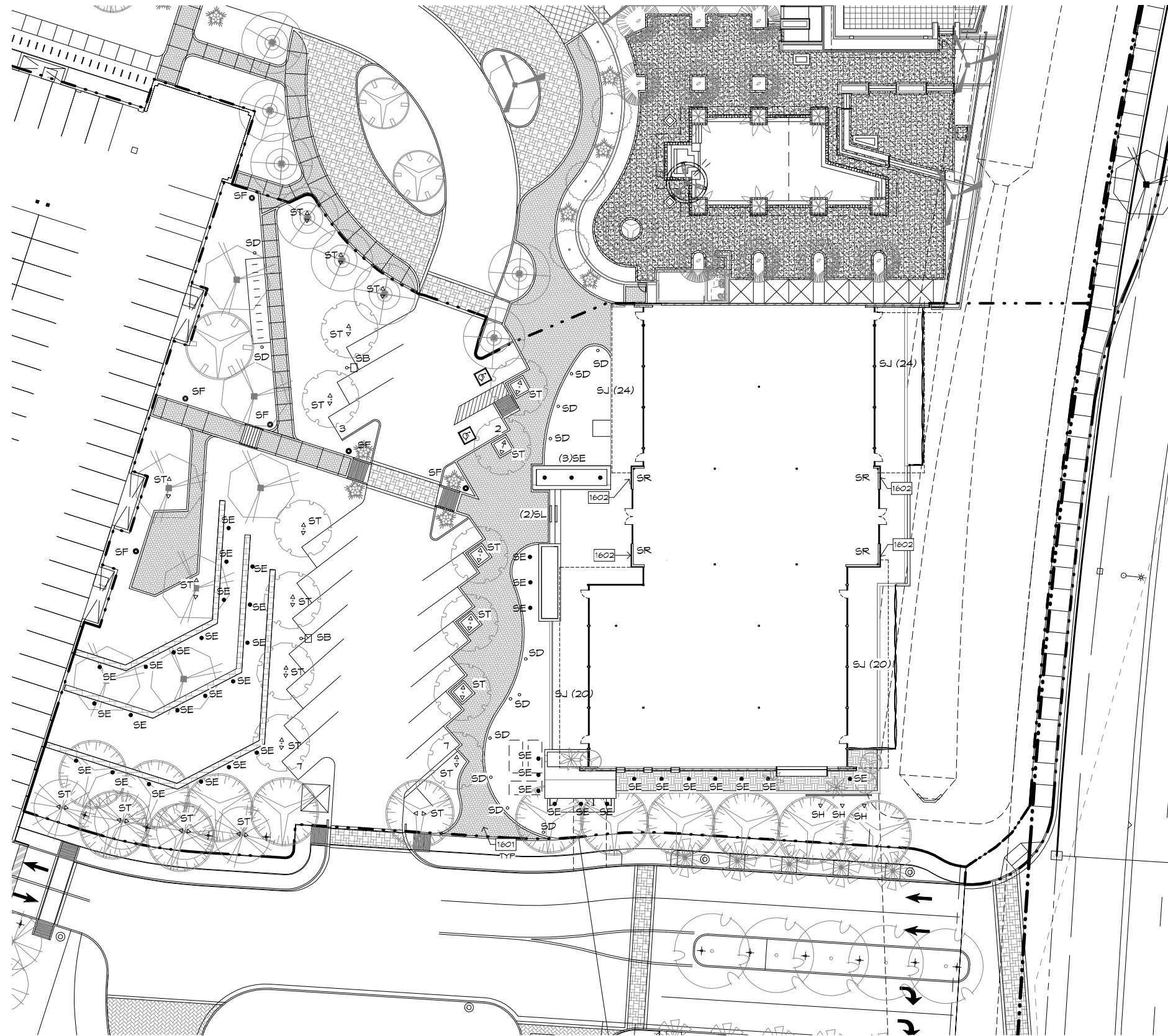
CAVASSON
RETAIL BUILDING
SCOTTSDALE, AZ

Case #: _____
Plan Check #: _____
Date: 2020.01.31
Revisions: _____

Project Number: 15148.300
Drawn By: PP
Title: MATERIAL BOARD

DR70

6-DR-2020
6/29/2020



GENERAL SITE LIGHTING NOTES

- A. ALL DIMENSIONS ARE TO TREE AND FIXTURE CENTERLINES, U.N.O.
- B. SEE ELECTRICAL PLANS FOR ADDITIONAL FIXTURE SPECIFICATION DATA AND CIRCUITING
- C. SEE RCP AND BUILDING ELEVATIONS FOR ADDITIONAL EXTERIOR LIGHTING DATA



Butler Design Group Inc.
 architects & planners
 5017 East Washington St. #107
 Phoenix, Arizona 85034
 Phone 602-957-1800

PRELIMINARY
 NOT FOR
 CONSTRUCTION

STATEMENT OF INSTRUMENTS OF SERVICE
 All drawings, plans, specifications prepared by Butler Design Group Inc. and other documents and instruments prepared by Butler Design Group Inc. are the property of Butler Design Group Inc. and shall remain the property of Butler Design Group Inc. until such time as they are returned to Butler Design Group Inc. in writing. Butler Design Group Inc. shall not be held responsible for any errors or omissions in any drawings, plans, specifications or other documents prepared by Butler Design Group Inc. or any third party. Butler Design Group Inc. shall not be held responsible for any errors or omissions in any drawings, plans, specifications or other documents prepared by Butler Design Group Inc. or any third party. Butler Design Group Inc. shall not be held responsible for any errors or omissions in any drawings, plans, specifications or other documents prepared by Butler Design Group Inc. or any third party.

SITE LIGHTING SCHEDULE

TAG	SB
TYPE	TRAFFIC POLE LIGHT
MFR	LITHONIA
MODEL	DSX1 LED P7 40K T3M MVOLT SPA NLTAIR2
TAG	SD
TYPE	BOLLARD
MFR	BESA
MODEL	99578/79818 K4
TAG	SE
TYPE	IN-GROUND WALL-WASH
TAG	SF
TYPE	PEDESTRIAN POLE LIGHT
MFR	LITHONIA
MODEL	MRP LED 42C 1000/40K SR5 MBOLT DDBXD
TAG	SH
TYPE	DIRECTIONAL SIGN LIGHT
TAG	ST
TYPE	TREE WELL UPLIGHT, QTY(2)
MFR	ASPEN LED
MODEL	12V LED16
TAG	SR
TYPE	WALL MOUNTED LIGHT
TAG	SL
TYPE	STAIR RISER LIGHT
TAG	SJ
TYPE	RECESSED LED DOWNLIGHT

KEYNOTES

- 1601 CENTER LIGHTS ON HOLE IN TREE GRATE AND OFFSET 2'-0" FROM CENTERLINE OF TRUNK, EACH SIDE.
- 1602 CUSTOM COPPER WALL SCONCE LIGHT @ 6'-0"

Case #:
 Plan Check #:
 Date: 2020.04.24

Revisions:

Project Number: 15148.300
 Drawn By: PP
 Title: EXTERIOR LIGHTING SITE PLAN

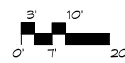
DR46

6-DR-2020
 6/29/2020

ATTACHMENT #10

1 LIGHTING COORDINATION PLAN

SCALE: 1" = 20'-0"



PRELIMINARY
NOT FOR
CONSTRUCTION

OWNERSHIP OF INSTRUMENTS OF SERVICE
The design and construction documents prepared by the undersigned are the property of the undersigned and shall remain the property of the undersigned. No part of these documents shall be reproduced, stored in a retrieval system, or transmitted in any form or by any means, electronic, mechanical, photocopying, recording, or by any information storage and retrieval system, without the prior written consent of the undersigned.

CAVASSON
RETAIL BUILDING
SCOTTSDALE, AZ

Case #: _____
Plan Check #: _____
Date: 2020.01.31

Revisions: _____

Project Number: 15148.300
Drawn By: _____

Title: MANUFACTURER
LIGHTING CUT SHEETS

DR48

6-DR-2020
6/29/2020

ST ASPEN LED Design2Ship™ WINSCAPE® 12V LED16

DESCRIPTION
Design2Ship™ is a quickship program with a 5 business day turn-ship volume.
The Aspen series accent lights are available for a variety of mounting applications including: up and, wall, and sign and a collection of accessories for use with Design2Ship™.

ORDERING INFORMATION
EXAMPLE: ASPEN QS A 3LED16 30K 12 NSP FLC KM BL

Color	Finish	Mounting	Control	Beam	Options
ASPEN	QS	3LED16 30K 12 NSP	FLC	KM	BL

WARRANTY
5 Year Limited Warranty

SF MRP LED LED Area Luminaire

Specifications
EPA: 1.22 ft
Luminaire Height: 6.00 ft
Overall Height: 32" (813 mm)
Diameter: 18" (457 mm)
Weight (max): 37.5 lbs (17 kg)

CSA Capable Luminaire
This luminaire is an A+ capable luminaire, which has been designed and tested to provide consistent color reproduction and uniform light temperature.
All configurations of this luminaire meet the Acuity Brands' specifications for the most demanding applications.
This luminaire is A+ Certified when ordered with DTL controls marked by a **DTL** in the product code. DTL, DCL, and DCLL equipped luminaires meet the A+ specification for luminaire photometric interoperability.
This luminaire is part of an A+ Certified solution for RDM™ or DALI™ wireless control networks, providing out-of-the-box control compatibility with simple commissioning when ordered with D-trace and control options marked by a **DTL** in the product code.
To learn more about A+, visit www.acuitybrands.com/a+.
1. See ordering tree for details.
2. A+ Certified Solutions for RDM require the order of one RDM mode per luminaire. Sold Separately. Link to Store: links.to.DTL.

ORDERING INFORMATION
EXAMPLE: MRP LED 42C 700 40K 5RS MVOLT DDBXD

Color	Finish	Mounting	Control	Beam	Options
MRP LED	42C	700 40K 5RS	MVOLT	DDBXD	

SD LED bollard - 360° distribution

Application
LED bollard - 360° distribution. This luminaire is designed to provide uniform illumination in a ground surface. Mounted with mounting system that allows the luminaire to be adjusted perpendicular of either boll or ornament.

Material
Luminaire housing and case constructed of die-cast and extruded marine grade, except the 3075 clear acrylic (3000) aluminum alloy. Holographic glass lens. Holographic glass lens. High to refractive index is coated. Weather-resistant stainless steel fastener. NEMA rated to North American Standards, suitable for wet locations. Protection class IP65.

Electrical
Operating voltage: 120-277VAC
Minimum start temperature: 40°F
LED module wattage: 12.0W
System wattage: 15.0W
Control: 0-10V dimmable
Color rendering index: Ra > 90
Luminaire life: 50,000 hours (L70)
Lifetime at Ta=45°C: 68,000 h (L70)

LED color temperature
3000K - Product number = **K4**
3500K - Product number = **K3B**
4000K - Product number = **K2**
5000K - Product number = **K2P**

BECA can supply you with module LED replacement modules for up to 30 years after the purchase of LED luminaires - see website for details.

Finish
All BECA standard finishes are matte, textured polyester powder coat with texture to 3 mil minimum.
Available colors: Bronze (BR) White (WH) Black (BK) Silver (SL) Blue (BL)

ORDERING INFORMATION
EXAMPLE: SD 12 40K 1 12V 12V 12V

SB D-Series Size 1 LED Area Luminaire

Specifications
EPA: 1.22 ft
Luminaire Height: 6.00 ft
Overall Height: 32" (813 mm)
Diameter: 18" (457 mm)
Weight (max): 37.5 lbs (17 kg)

Introduction
The modern styling of the D-Series is striking yet unobtrusive - making a bold, progressive statement even as it blends seamlessly with its environment. The D-Series distills the benefits of the latest in LED technology into a high performance, high efficiency, long-life luminaire.

Ordering Information
EXAMPLE: DSX1 LED P7 40K TSM MVOLT SPA NLTAR2 PRHN DDBXD

Color	Finish	Mounting	Control	Beam	Options
DSX1	P7	40K TSM	MVOLT	SPA	NLTAR2 PRHN DDBXD

SL Sun3 Round LED Recessed Uplight/Steplight

Description:
Sun3 3 inch Round LED Recessed Uplight/Steplight includes a 12 volt 6.5 watt high powered warm white 2666K color temperature LED, 60 lumens per watt/21 lumens total. Features a 16, 23, 36 or 47 degree precise beam and tempered glass lens with marine-grade aluminum beveled edge trim. Finish in Satin Aluminum. 70 percent lumen maintenance based on 50,000 hours of operation. Sun3 is suited for outdoor, ocean front environments using a well location electrical box or indoor using a standard octagon electrical box. Can be powered with a 12V-60.12 LED electronic low voltage, or 12VAC 1-100.12 or 1-300.12 magnetic low voltage power supply. Electronic low voltage power supply dimmable with an electronic low voltage dimmer. Lutron dimmers recommended. Dim to 9 percent with Lutron Diva DV9-3002, 21 percent with Lutron Signa SIGN-3002 or 31 percent with Lutron Maestro MREU-600. Magnetic low voltage power supply dimmable with a magnetic low voltage dimmer. Lutron dimmers recommended. Dim to 16 percent with Lutron Diva DMV-6002, or 39 percent with Lutron Signa SIGN-6002. The trim accepts optical accessories and dichroic color filters when used with the SUN3 LED accessories sold separately. ETL listed. Well location listed. 3.2 inch diameter x 3.4 inch height. Finish and color in 1 year warranty. SUN3 is constant voltage luminaire and it is listed to be used with the following accessories:

Technical Information
Luminous Flux: 211 Lumens
Lumens/Watt: 43.23
Lamp Color: 2666 K
Color Rendering: 80 CRI
Beam Angle: 47°
Lamp Life: 50,000 hours

Product Number: EDG56225

Company:	Future Type:	Date:
Product:	Approved By:	Nov 15, 2019

SJ gotham™ 4" Evo® Downlight

Optical System
• 5/8" diameter lensless semi-specular, multi off-axis or specular reflecting trim
• Patent Pending Ray™ optical design (U.S. Patent No. 8,800,050)
• 45° cutoff to source and source image
• Top-down flash characteristics
• Multiple color beam, suitable for task lighting

Mechanical System
• 5/8" diameter lensless semi-specular, multi off-axis or specular reflecting trim
• 1/4" recessed mounting base (maximum of 3/32" and minimum of 1/8", per material, 4" vertical adjustment)
• Locks in all trim, just installation
• 2.5/16" hole capacity, 8 (4 pin, 4 pin) 1.25/16" hole for 50°C
• Light engine and driver accessible through aperture
• In outdoor, recessed trim may be included with flangeless trim. Steps separately. Installs independently of the mounting frame to reduce chance of cancer case to eliminate.

Electrical System
• Fully compatible and applicable to most LED light engines
• 100% lumen maintenance at 50,000 hours
• Tested according to UL 79 and UL 80 standards
• Overhead and short-circuit protected
• 2.5/16" hole capacity, 8 (4 pin, 4 pin) 1.25/16" hole for 50°C optical

Warranty
• 5-year limited warranty. Complete warranty terms located at www.gothamlighting.com/warranty

CSA Capable Luminaire
This luminaire is an A+ capable luminaire, which has been designed and tested to provide consistent color reproduction and uniform light temperature.
All configurations of this luminaire meet the Acuity Brands' specifications for the most demanding applications.
This luminaire is part of an A+ Certified solution for DALI™ wireless control networks, providing out-of-the-box control compatibility with simple commissioning when ordered with D-trace and control options marked by a **DTL** in the product code.
To learn more about A+, visit www.acuitybrands.com/a+.
*See ordering tree for details.

ORDERING INFORMATION
EXAMPLE: SJ 4" Evo 40K 1 12V 12V 12V

SR ASPEN 36 WALL SCENCE

High quality LM88-based LEDs
for consistent long-life performance and color

Outstanding protection against the elements:
• Powder coat finishes
• Stainless Steel mounting hardware
• Impact-resistant, UV stabilized frosted acrylic lensing
• IP-65 Rated

Specifications

Specified Lumens	200
Watts	48
Voltage	Universal LED 12V, with integral transformer (2.0 amp position indicator)
Dimming	0-10V dim
Light Distribution	Spot/beam
Mounting Options	Wall
Performance Options	20-200 Watt Range Protection
Color Rendering	90+
Color Beaming	3° spot
Beam Spacing	80-100 mm
Beam Size	Non-adjustable
Wet Listed	Yes
General Listing	ETL
California Title 24	Can be used to comply with CE 24A Title 24 Part 6 for outdoor use. Registration with CEC Appliance Database not required.
Warranty	5 Year
Weight	3 lbs.

ORDERING INFORMATION

700WASP	Color	Finish	Mounting	Control	Beam	Options
700WASP	40K	1	12V	12V	12V	



Project Narrative

January 31, 2020

Nationwide Realty Investors' Cavasson, a 134-acre mixed-use development in Scottsdale, will include approximately 1.8 million square feet of market leading commercial office space, 1,600 multifamily units, hotels, retail, restaurants, services and amenities. The walkable community will include tree-lined sidewalks, bike paths, green spaces and community gathering places with ample parking. The project will include an infrastructure investment of approximately \$30 million—delivering new roads, sidewalks, improved connectivity and flood mitigation improvements which will benefit the property and significant acreage surrounding the development. Cavasson is located along Loop 101, at the southwest corner of Hayden Road and Legacy Boulevard.

The initial phase includes a new 460,000 square-foot regional headquarters building for Nationwide Insurance and six-story parking structure now under construction, multifamily apartments, five-story commercial office buildings, a full-service luxury hotel, and a retail & restaurant building.

This development review package presents Cavasson Retail, a single-story, 14,000 sf shell building, with parking, landscape, and pedestrian pathways linking adjacent building sites.

The proposed development complies with the General Plan, Zoning Ordinance, Commercial Design Guidelines, Design Standards and Policies Manual, and other applicable standards of the City of Scottsdale. Specifically, the project addresses the criteria of Scottsdale Zoning Ordinance Section 1.904 as follows:

1. The Board shall examine the design and theme of the application for consistency with the design and character components of the applicable guidelines, development standards, Design Standards and Policies Manual, master plans, character plan and General Plan.

The proposed development complies with guidelines and development standards applicable to the parcel, the Design Standards & Policies Manual, Design Guidelines for Office Development, the Greater Airport Character Area Plan, and the General Plan of the City of Scottsdale.

2. The architectural character, landscaping and site design of the proposed development shall:
 - a. Promote a desirable relationship of structures to one another, to open spaces and topography, both on the site and in the surrounding neighborhood;

The building is oriented to feature mountain views. The smaller scale of the building balances the scales of the larger office building to the south and hotel to the north and further provides an amenity to both. A park-like trail against the adjacent parking garage broadens the pedestrian experience by linking the project site to its neighbors. The dramatic patio cantilevers and stone site walls make an architectural feature out of the existing site slopes and elevate the aesthetic of the drainage channel along Hayden Rd. Landscaping along the internal streetscape is lush and consistent with a Sonoran Desert palette.

- b. Avoid excessive variety and monotonous repetition;

Each development within the Cavasson Master Plan is uniquely organized. This project offers a smaller scale structure: a jewel among the larger buildings that surround it. As such, there is no other building quite like it planned for Cavasson. It's cantilevering covered patios are a unique, pedestrian-friendly feature. Yet, select materials, site lighting and plantings are held in common between all buildings at Cavasson, serving to unify the collection of buildings into an experientially connected community.

- c. Recognize the unique climatic and other environmental factors of this region to respond to the Sonoran Desert environment, as specified in the Sensitive Design Principles;

The proposed development conforms with the Scottsdale Sensitive Design Principles. Buildings are oriented to emphasize views connecting occupants to the natural desert and mountains beyond. Patios with deep overhangs are provided to encourage occupant engagement with the exterior environment, while protecting them and the building from the harmful effects of the sun. Deeply recessed windows and doors not only provide visual interest but reinforce the "floating" horizontality of the roof planes, and the apparent weight of the stone walls that anchoring those planes to the ground. Exposed (yet protected) wood beams are employed to emphasize traditional construction methods within a modern context. Evocative materials in natural tones and textures seamlessly blend architecture and environment. Abundant shade trees and paved pathways provide exciting spaces for pedestrians to engage with each other and the landscape.

- d. Conform to the recommendations and guidelines in the Environmentally Sensitive Lands (ESL) Ordinance, in the ESL Overlay District; and

The ordinance is not applicable to this project.

- e. Incorporate unique or characteristic architectural features, including building height, size, shape, color, texture, setback or architectural details, in the Historic Property Overlay District.

Project is not located in the Historic Property Overlay District.

- 3. Ingress, egress, internal traffic circulation, off-street parking facilities, loading and service areas and pedestrian ways shall be so designed as to promote safety and convenience.

Vehicular and pedestrian safety is paramount. Building Egress/Ingress is organized along natural/assumed paths of pedestrian travel. Visitor parking is provided immediately adjacent to the building, limiting the need for folks unfamiliar with the property to traverse the site on foot. ADA parking is organized near the entry to allow mobility challenged persons access to the building without having to cross vehicular pathways. Most parking is available in the adjacent garage via most immediate access to the public way. This reduces the amount of vehicular traffic through the project site, creating a safer and more pedestrian friendly environment.

- 4. If provided, mechanical equipment, appurtenances and utilities, and their associated screening shall be integral to the building design.

All mechanical equipment is located on the roof for efficiency and so as not to encumber the site with unsightly devices. Rooftop screening is setback from the building perimeter to limit sight lines. To unify

the aesthetic, the screens utilize similar metal panels and colors as employed elsewhere on the building. Ground-mounted electrical transformers and utility pedestals are located where viewing from significant vehicular and pedestrian pathways will be limited, and all are screened with landscape. It is anticipated that any grease traps supporting any restaurant use of the space would be buried in the landscape at the southwest corner of the building.

5. Within the Downtown Area, building and site design shall:
 - a. Demonstrate conformance with the Downtown Plan Urban Design & Architectural Guidelines;
 - b. Incorporate urban and architectural design that address human scale and incorporate pedestrian-oriented environment at the street level;
 - c. Reflect contemporary and historic interpretations of Sonoran Desert architectural traditions, by subdividing the overall massing into smaller elements, expressing small scale details, and recessing fenestrations;
 - d. Reflect the design features and materials of the urban neighborhoods in which the development is located; and
 - e. Address building mass, height, materials, and intensity transitions between adjacent/abutting Type 1 and Type 2 Areas, and adjacent/abutting Type 2 Areas and existing development outside the Downtown Area.

The project is not located within the downtown area. These requirements are not applicable.

6. The location of artwork provided in accordance with the Cultural Improvement Program or Public Art Program shall address the following criteria:
 - a. Accessibility to the public;
 - b. Location near pedestrian circulation routes consistent with existing or future development or natural features;
 - c. Location near the primary pedestrian or vehicular entrance of a development;
 - d. Location in conformance with the Design Standards and Policies Manual for locations affecting existing utilities, public utility easements, and vehicular sight distance requirements; and
 - e. Location in conformance to standards for public safety.

Neither program is applicable to the project, though signature open space and enhanced pedestrian amenities are incorporated into the Cavasson master plan.

DEVELOPMENT REVIEW BOARD CRITERIA ANALYSIS

Per Section 1.904. of the Zoning Ordinance, in considering any application for development, the Development Review Board shall be guided by the following criteria:

1. The Board shall examine the design and theme of the application for consistency with the design and character components of the applicable guidelines, development standards, Design Standards and Policies Manual, master plans, character plan and General Plan.
 - Staff finds that the proposal responds favorably to the goals and policies of the Greater Airpark Character Area Plan by creating a pedestrian oriented design that includes thoughtfully placed gathering spaces and patios. Additionally, the proposal enhances the “city block” setting intended for the Cavasson project by providing contiguous pedestrian connectivity between the project and the rest of the campus that promotes greater walkability (Policy CD 1.1). The centrally located parking garage allows the pedestrian environment to be further enhanced and reduce surface parking that might otherwise interrupt pedestrian connectivity.
2. The architectural character, landscaping and site design of the proposed development shall:
 - a. Promote a desirable relationship of structures to one another, to open spaces and topography, both on the site and in the surrounding neighborhood;
 - b. Avoid excessive variety and monotonous repetition;
 - c. Recognize the unique climatic and other environmental factors of this region to respond to the Sonoran Desert environment, as specified in the Sensitive Design Principles;
 - d. Conform to the recommendations and guidelines in the Environmentally Sensitive Lands (ESL) Ordinance, in the ESL Overlay District; and
 - e. Incorporate unique or characteristic architectural features, including building height, size, shape, color, texture, setback or architectural details, in the Historic Property Overlay District.
 - The applicant states in the narrative that the smaller scale of the proposed building balances the scales of the larger office building to the south and future hotel to the north, while providing an amenity for both. The dramatic patio cantilevers and the stone walls transform the existing slopes and elevate the aesthetic of the large drainage channel along the Hayden Road frontage. Select materials, site lighting and plantings are held in common between all the buildings in Cavasson, serving to unify the collection of buildings into an experientially connected community. In response to the Sensitive Design Principles, the patios with deep overhangs are proposed to encourage occupant engagement with the exterior environment. Additionally, windows and doors are deeply recessed to provide visual interest and reinforce the “floating” horizontality of the roof planes, and the apparent weight of the stone walls that anchor those planes to the ground.
 - Staff finds the proposal is generally responsive to the Sensitive Design Principles, specifically through the use of overhangs and shade elements to minimize solar heat gain. Colors and textures are consistent with the surrounding desert context and other buildings on the site, and the exaggerated entry feature adds visual interest and minimizes monotony.
3. Ingress, egress, internal traffic circulation, off-street parking facilities, loading and service areas and pedestrian ways shall be designed as to promote safety and convenience.

- The applicant states in the narrative that vehicular and pedestrian safety is paramount. To that end, visitor parking is provided immediately adjacent to the building, limiting the need for visitors unfamiliar with the property to traverse the site on foot. Centralized parking in the garage reduces the volume of vehicular traffic through the site, creating a safer and more pedestrian friendly environment.
 - Staff finds that the site design emphasizes the pedestrian realm by providing wide and plentiful sidewalks and plaza spaces. While the parking garage is not immediately adjacent to the building entrance, sidewalks are placed to provide the most direct route to the building entrance from the garage, and crosswalks consisting of custom pavers are provided to clearly delineate connections that cross the driveway.
4. If provided, mechanical equipment, appurtenances and utilities, and their associated screening shall be integral to the building design.
 - The applicant confirms in the narrative that rooftop mechanical will be fully screened and integrated into the building design through the use of parapets and screening materials consistent with the exterior skin of the building. To unify the aesthetic, screening utilizes similar metal panels and colors employed elsewhere on the building. It is anticipated that any grease traps for a restaurant use in the building would be buried in the landscape area immediately southwest of the building.
 5. Within the Downtown Area, building and site design shall:
 - a. Demonstrate conformance with the Downtown Plan Urban Design & Architectural Guidelines;
 - b. Incorporate urban and architectural design that address human scale and incorporate pedestrian-oriented environment at the street level;
 - c. Reflect contemporary and historic interpretations of Sonoran Desert architectural traditions, by subdividing the overall massing into smaller elements, expressing small scale details, and recessing fenestrations;
 - d. Reflect the design features and materials of the urban neighborhoods in which the development is located; and
 - e. Incorporate enhanced design and aesthetics of building mass, height, materials and intensity with transitions between adjacent/abutting Type 1 and Type 2 Areas, and adjacent/abutting Type 2 Areas and existing development outside the Downtown Area.
 - This criterion is not applicable.
 6. The location of artwork provided in accordance with the Cultural Improvement Program or Public Art Program shall address the following criteria:
 - a. Accessibility to the public;
 - b. Location near pedestrian circulation routes consistent with existing or future development or natural features;
 - c. Location near the primary pedestrian or vehicular entrance of a development;
 - d. Location in conformance with Design Standards and Policies Manual for locations affecting existing utilities, public utility easements, and vehicular sight distance requirements; and
 - e. Location in conformance to standards for public safety.
 - This criterion is not applicable.

DEVELOPMENT INFORMATION

Zoning History

The site is part of the Crossroads East master-planned community, which encompasses approximately 1,000 acres, and was originally approved in 2002 (19-ZN-2002). Per that zoning case, the entire Crossroads East development is zoned Planned Community (P-C) District. As properties are acquired, the developer coordinates with the Arizona State Land Department, who owns the land, to select a P-C comparable zoning district from a Land Use Budget table, included as part of the Development Plan. The developer for this site selected Planned Airpark Core (PCP) zoning and received approval for amended PCP development standards under case 19-ZN-2002#6.

Community Involvement

With the submittal of the application, staff notified all property owners within 750 feet of the site. In addition, required signage was posted on the site by the City announcing the hearing date. As of the publishing of this report, staff has not received any community input regarding the application.

Context

Located at the southwest corner of Hayden Road and Cavasson Blvd. the site is part of the Cavasson Development Plan (19-ZN-2002#6) which encompasses +/- 124 acres at the northwest corner of Hayden & the Loop 101 Freeway. The only other development on the site is the Nationwide Corporate Headquarters building south of the project site and a large parking garage (6-DR-2019). Another office building (51-DR-2019) is under construction at the northeast corner of Miller Road & the Loop 101 Freeway.

Project Data

- Existing Use: Vacant
- Proposed Use: Retail/restaurant
- Parcel Size: 233,178 square feet / 5.3 acres (net)
- Total Building Area: 13,992 square feet
- Floor Area Ratio Allowed: Cumulative (19-ZN-2002#6)
- Building Height Allowed: 84 feet (inclusive of rooftop appurtenances)
- Building Height Proposed: 34 feet (inclusive of rooftop appurtenances)
- Parking Required: 56 spaces
- Parking Provided: 3,750 spaces (garage) + 20 surface spaces
- Open Space Required: 17,303 square feet
- Open Space Provided: 31,850 square feet

**Stipulations for the
Development Review Board Application:
Cavasson Retail
Case Number: 6-DR-2020**

These stipulations are intended to protect the public health, safety, welfare, and the City of Scottsdale.

APPLICABLE DOCUMENTS AND PLANS:

1. Except as required by the Scottsdale Revised Code (SRC), the Design Standards and Policies Manual (DSPM), and the other stipulations herein, the site design and construction shall substantially conform to the following documents:
 - a. Architectural elements, including dimensions, materials, form, color, and texture shall be constructed to be consistent with the building elevations provided by Butler Design Group, with a city staff date of 5/19/2020.
 - b. The location and configuration of all site improvements shall be consistent with the site plan provided by Butler Design Group, with a city staff date of 5/19/2020
 - c. Landscape improvements, including quantity, size, and location shall be installed to be consistent with the preliminary landscape plan provided by Greey-Pickett, with a city staff date of 5/19/2020.
 - d. The case drainage report provided by Hubbard Engineering and accepted in concept by the Stormwater Management Department of the Planning and Development Services.
 - e. The water and sewer basis of design report submitted by Hubbard Engineering and accepted by the Water Resources Department.

RELEVANT CASES:

Ordinance

- A. At the time of review, the applicable Zoning cases for the subject site were: 19-ZN-2002 and 19-ZN-2002#6

ARCHAEOLOGICAL RESOURCES:

Ordinance

- B. Any development on the property is subject to the requirements of Scottsdale Revised Code, Chapter 46, Article VI, Section 46-134 - Discoveries of archaeological resources during construction.

ARCHITECTURAL DESIGN:

DRB Stipulations

2. All exterior window glazing shall be recessed a minimum of fifty (50) percent of the wall depth, including glass windows within any tower/clerestory elements. The amount or recess shall be measured from the face of the exterior wall to the face of the glazing, exclusive of external detailing.

With the final plan submittal, the developer shall provide head, jamb and sill details clearly showing the amount of recess for all window types.

3. All exterior doors shall be recessed a minimum of thirty (30) percent of the wall depth, the amount of recess shall be measured from the face of the exterior wall to the face of the glazing, exclusive of external detailing. With the final plan submittal the developer shall provide head, jamb and sill details clearly showing the amount of recess for all door types.

SITE DESIGN:

DRB Stipulations

4. No parking stalls shall be allowed immediately adjacent to pedestrian crossings.

LANDSCAPE DESIGN:

DRB Stipulations

5. Landscape pots and/or raised landscape planters (if provided) shall be a minimum of 36 inches in diameter, a sufficient depth to support the root system of the plants located in the pots/planters.

EXTRIOR LIGHTING:

Ordinance

- C. All exterior luminaires mounted eight (8) feet or higher above finished grade, shall be directed downward.

DRB Stipulations

6. All exterior luminaires shall meet all IES requirements for full cutoff and shall be aimed downward and away from property line except for sign and landscape lighting.
7. Incorporate the following parking lot and site lighting into the project's design:
 - a. The maintained average horizontal luminance level, at grade on the site, shall not exceed 2.0 foot-candles. All exterior luminaires shall be included in this calculation.
 - b. The maintained maximum horizontal luminance level, at grade on the site, shall not exceed 8.0 foot-candles. All exterior luminaires shall be included in this calculation.
 - c. The initial vertical luminance at 6-foot above grade, along the entire property line shall not exceed 1.0 foot-candle. All exterior luminaires shall be included in this calculation.
 - d. The total lumen per luminaire shall not exceed 24,000 lumens.
 - e. All exterior lighting shall have a color temperature of 3000 Kelvin or less.

STREET INFRASTRUCTURE:

Ordinance

- D. All street infrastructure improvements shall be constructed in accordance with this City of Scottsdale (COS) Supplement to MAG Specifications and Details, and the Design Standards and Policies Manual.

DRB Stipulations

8. Prior to the issuance of any building permit for the development project, the property owner shall submit and obtain approval of civil construction documents to construct the following improvements:

CASE NO. 6-DR-2020

a. N HAYDEN RD.

- i. Driveway connection shall be of Type CH and designed to restrict egressing left turn movements.

- 9. All curb ramps for public and pedestrian sidewalks that intersect public and private streets, or driveways that intersect public and private streets, shall have truncated domes that are colored to match Frazee Western Reserve (8617N) color, or Sherman Williams (SW7055) Enduring Bronze (246-C7).

DRAINAGE AND FLOOD CONTROL:

DRB Stipulations

- 10. With the civil construction document submittal, the property owner shall submit a final drainage report that demonstrates consistency with the DS&PM and the case drainage report accepted in concept by the Stormwater Manager or designee.
- 11. All headwalls and drainage structures shall be integrally colored concrete to blend with the color of the surrounding natural desert.

EASEMENTS DEDICATIONS:

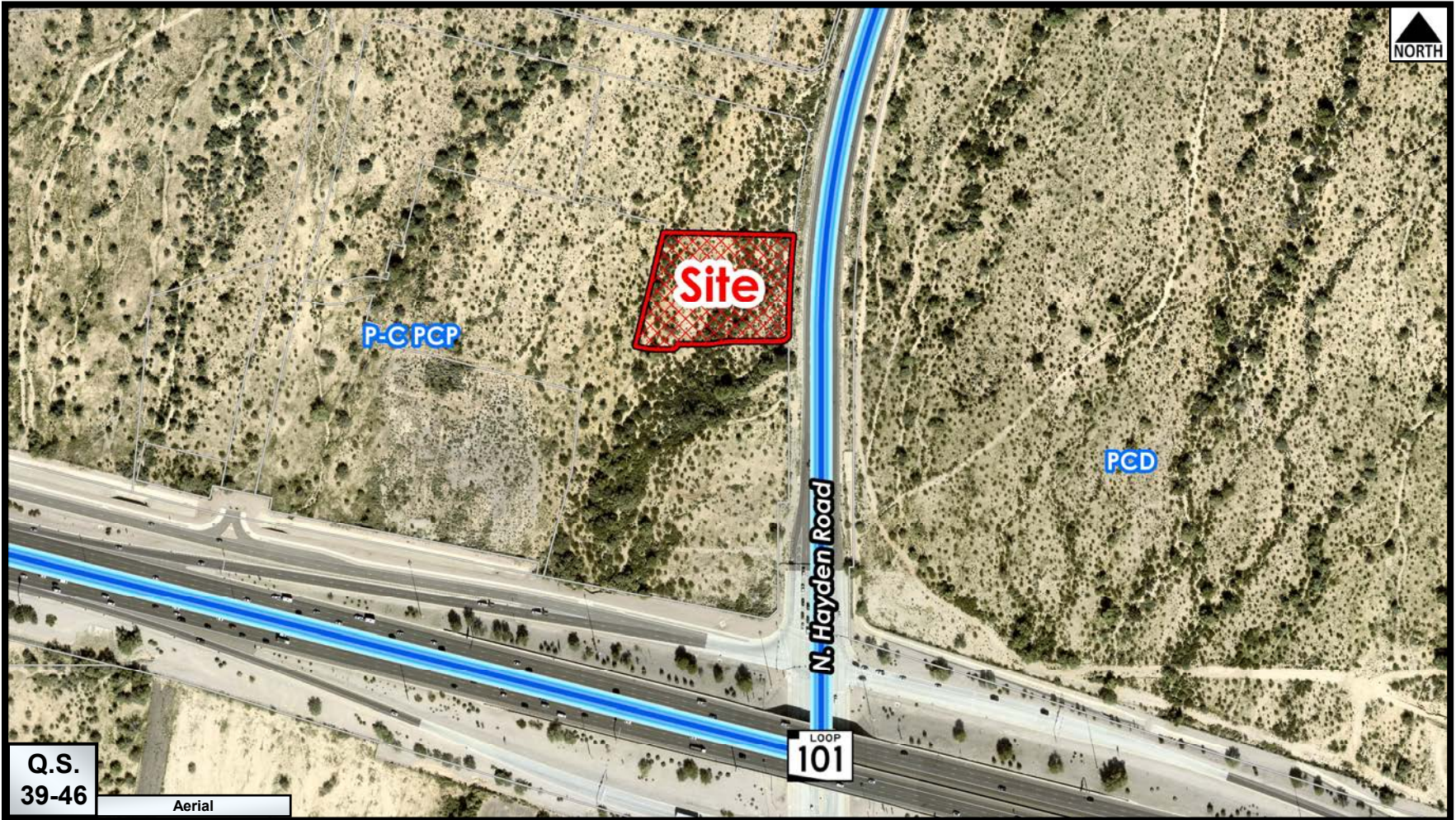
DRB Stipulations

- 12. Prior to the issuance of any building permit for the development project, the property owner shall dedicate the following easements to the City of Scottsdale on a final plat or map of dedication:
 - a. A sight distance easement, in conformance with figures 5.3-26 and 5.3-27 of Section 5.3 of the DSPM, where a sight distance triangle(s) cross on to the property.
 - b. A continuous Public Non-Motorized Access Easement to the City of Scottsdale to contain any portion of the public sidewalk in locations where the sidewalk crosses on to the lot.
 - c. A one (1) foot Vehicle Non-Access Easement along N. Hayden Rd frontage except at proposed driveway connections.

ADDITIONAL ITEMS:

DRB Stipulations

- 13. All exterior signage requires separate review and approval.



Zoning Aerial

6-DR-2020