

**Scottsdale General Plan 2035:
Environmental Sustainability**
Scottsdale Environmental Advisory Commission
May 5, 2022

Tonight's Item

Presentation and discussion regarding Scottsdale General Plan 2035 as it relates to goals, policies and implementation items associated with environmental sustainability.

What is a General Plan?

The General Plan is:

- Community Vision/City Policy
- Community-wide Goals
- Guides Decisions
- Legal Mandate
- Framework for More Specific Planning
- Establishes the Mixture/Location of Land Uses

The General Plan is NOT:

- Zoning
- Rigid or Static
- Budget
- Specific Project
- Capital Project
- Master Plan
- “Just the land use map”

Arizona State Statutes & General Plan 2035

Required under ARS 9-461.05

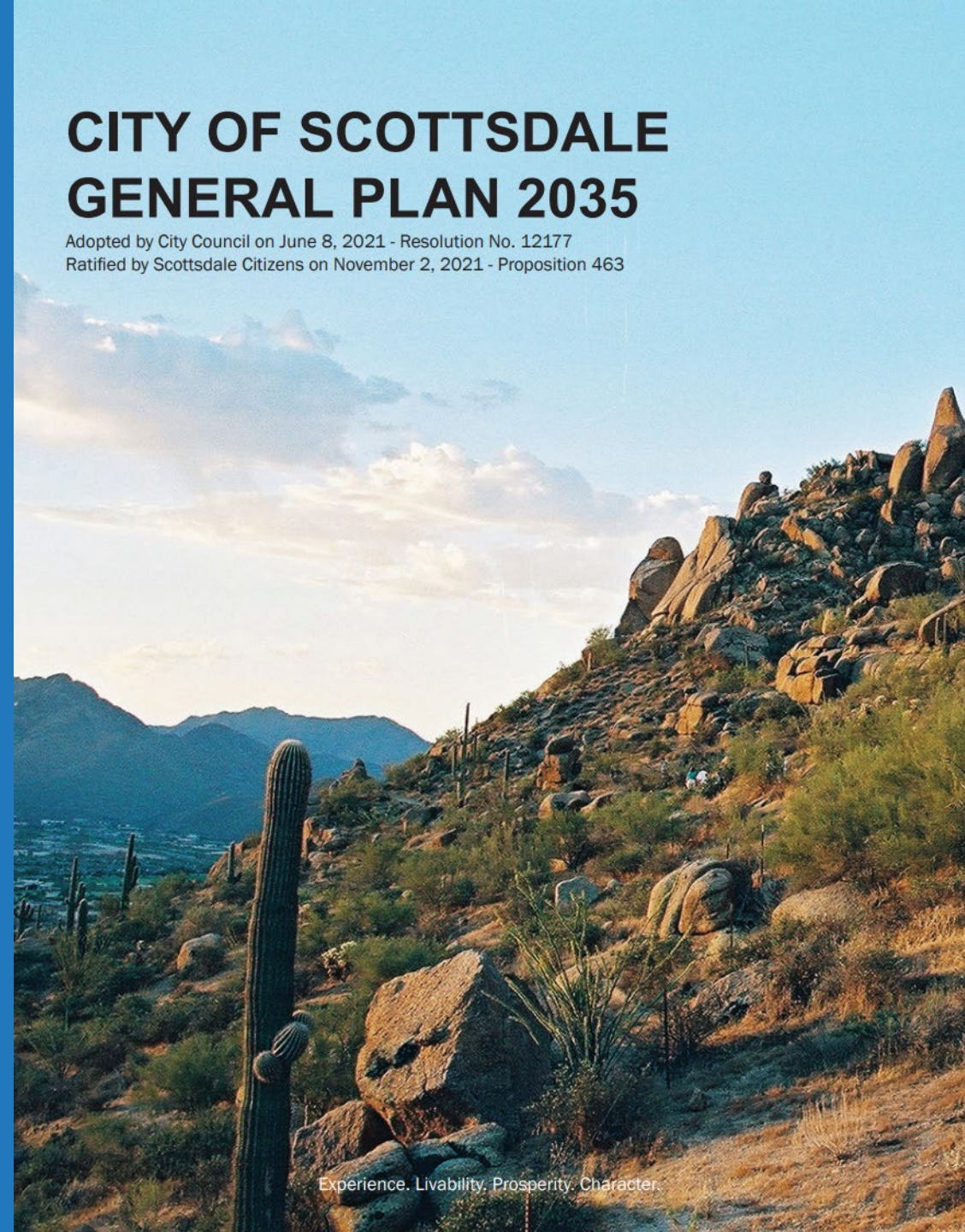
- Effective up to 10 years
- Update required every 10 years
 - Enhanced Public Outreach
 - Planning Commission Recommendation
 - City Council Adoption
 - Voter Ratification

General Plan 2035

- City Council Adopted June 8, 2021
- Ratified by public vote November 2, 2021

CITY OF SCOTTSDALE GENERAL PLAN 2035

Adopted by City Council on June 8, 2021 - Resolution No. 12177
Ratified by Scottsdale Citizens on November 2, 2021 - Proposition 463



Citizen Review Committee Appointments

Boards and Commissions with General Plan related content:

- Airport Advisory Commission
- Development Review Board
- **Scottsdale Environmental Advisory Commission**
- Historic Preservation Commission
- Human Relations Commission
- Human Services Commission
- Industrial Development Authority Board
- Library Board
- McDowell Sonoran Preserve Commission
- Neighborhood Advisory Commission
- Parks & Recreation Commission
- Tourism Development Commission
- Transportation Commission

VISION

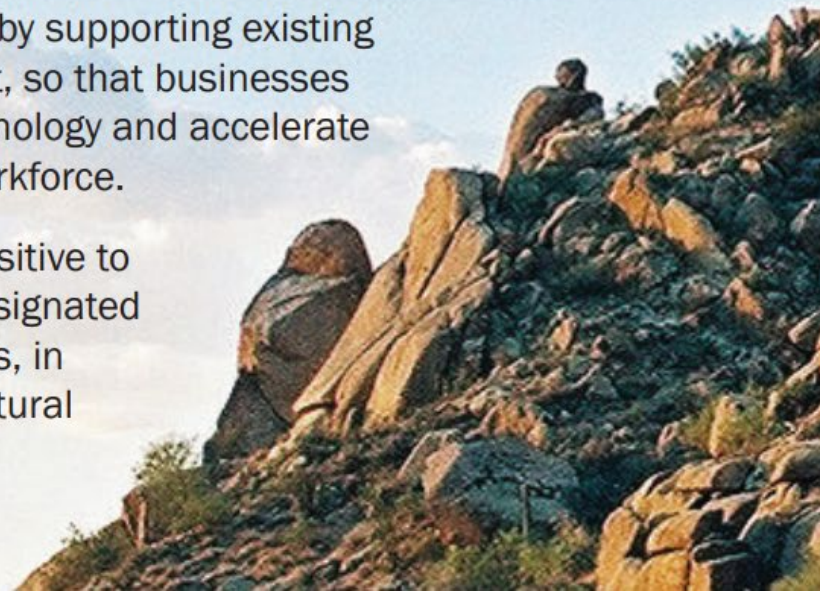
Scottsdale will continue to be an exceptional Sonoran Desert experience and premier international destination, where our Western heritage is valued. Our diverse neighborhoods foster outstanding livability, connectivity, healthy lifestyles, and a sustainable environment. Scottsdale will thrive by attracting and retaining business centers of excellence that encourage innovation and prosperity.

Exceptional Experience. Scottsdale has a reputation as an inclusive community, with natural desert beauty, the McDowell Sonoran Preserve, high-quality design standards, a vibrant downtown, world-class events and resorts, and diverse arts and culture venues.

Outstanding Livability. Scottsdale offers a variety of multi-generational lifestyle choices that are responsibly planned, connected, attractive, and supported with appropriate infrastructure and services for urban, suburban, and rural living. Neighborhood life promotes well-being and public safety via reliable municipal services.

Community Prosperity. Scottsdale will continue to thrive by supporting existing small businesses and fostering a pro-business environment, so that businesses can grow or choose to locate in Scottsdale to leverage technology and accelerate innovation and creativity, buoyed by a knowledge-based workforce.

Distinctive Character. Scottsdale will respect and be sensitive to our history and legacy found in the heart of Old Town, in designated Historic Preservation neighborhoods, at archaeological sites, in the equestrian community, and within cultural and architectural resources which define our sense of place.



OUR COMMUNITY VALUES



These values will be at the forefront of our decision making in implementing our vision, community aspirations, and goals found in the General Plan and shall be the basis upon which inconsistencies in the General Plan are resolved (values listed are of equal importance):

- **Respect Character and Culture**

Enhance and protect Scottsdale's unique features, neighborhood identity, character, livability, southwestern heritage, and tourism through appropriate land uses and high standards for design. Create vibrant and attractive places that accommodate a variety of ages and incomes and support the arts and multicultural traditions.

- **Conserve and Preserve the Environment**

Lead the region in the stewardship and sustainable management of the Sonoran Desert environment and conservation of natural resources and open spaces for the visual, physical, and personal enrichment of everyone.

- **Collaborate and Engage**

Promote strong, visionary leadership that is transparent, responsive, and efficient; collaborates regionally; respects and honors our community values; recognizes the benefit of interactive community involvement and volunteerism; and embraces citizens as active partners in decisions that affect their neighborhoods and city.

- **Foster Well-Being**

Promote a culture of lifelong physical and mental health, safety, and well-being for residents, visitors, employers, and employees. Foster social connectivity across cultural and generational boundaries by cultivating a welcoming environment; respecting human dignity; and recognizing and embracing citywide and regional diversity.

- **Connect the Community**

Connect all community members within the city and to the region by striving for cost-effective, adaptable, innovative, safe, and efficient mobility options. Connectivity and mobility involve more than getting people from here to there, connectivity and mobility influence the form and comfort of urban communities.

- **Revitalize Responsibly**

Vigorously evaluate the short- and long-term impacts of development and redevelopment decisions to ensure that public and private investment work collaboratively to support and maintain the unique features and local identity that make Scottsdale special, and contribute positively to the community's physical, fiscal, and economic needs and high quality of life.

- **Advance Innovation and Prosperity**

Embrace a diverse and innovative economy to sustain our high quality of life through a variety of businesses, health and research institutions, and educational, technological, tourism and cultural elements.

Sustainability & Environment Chapter

Focus on environmental resources and open spaces.

- Five state-mandated elements:
 - Open Space
 - Environmental Planning
 - Conservation
 - Water Resources
 - Energy



Open Space Element[‡]

Topics covered include open space types, the Scottsdale McDowell Sonoran Preserve, and open space management.

- Goals Include (‡Indicates State Statute Required):

Goal OS 1 Provide open space types‡

Goal OS 2 Fulfill Preserve initiative

Goal OS 3 Preserve natural open spaces

Goal OS 4 Maintain a continuous open space system

Goal OS 5 Provide developed open space opportunities

Goal OS 6 Relate to land use and character

Goal OS 7 Manage open space‡

Goal OS 8 Acquire, expand, improve open spaces‡

Goal OS 9 Expand the regional open space system‡





OPEN SPACE ELEMENT[‡]

Safe, accessible open space is vital for sustaining a high quality of life, thus, a strategically planned, balanced, and connected system of open spaces is essential to both citizen and visitor enjoyment. The City of Scottsdale commits to providing, maintaining, enhancing, and expanding both active and passive open spaces throughout the community to serve the local citizens and remain a highly desirable tourism destination.

Common open spaces serve a variety of functions, such as recreation, aesthetics, and flood control. Throughout Scottsdale, several types of open spaces create different experiences. The Scottsdale McDowell Sonoran Preserve is a continuous tract of natural open space. It protects significant wildlife habitat, maintains the community's connection to the natural Sonoran Desert, and represents an image and character that is uniquely Scottsdale. Other important swaths of preserved natural open space include those dedicated within the Environmentally Sensitive Lands District (ESL). This forward-thinking ordinance serves as a regulatory guide for protecting our environmentally sensitive desert lands, washes, and wildlife corridors, including protection from natural hazards. The ESL District also promotes conservation of natural resources, including watersheds, streams, and aquifers. A major developed open space, the Indian Bend Wash Greenbelt serves as a recreation and flood control tool, as well as a significant segment of the regional park system. Smaller parks next to school sites allow for dual use by the neighborhood and school.

As Scottsdale nears build-out, sustaining existing open spaces and creating new open spaces will be even more important. Regional collaboration in open space matters will help to ensure that current and future community members and visitors continue to enjoy our open spaces.

Through the goals and policies of this element, Scottsdale will sustainably protect and manage its open space resources.

Goals and Policies

Goal OS 1 †

Provide four primary public and private open space types: the Scottsdale McDowell Sonoran Preserve, natural open spaces, developed open spaces, and continuous open spaces.

Policies

OS 1.1 Scottsdale McDowell Sonoran Preserve. Provide an integrated public desert open space system consisting of mountains, desert, and natural areas to maintain scenic views, preserve wildlife and desert plant habitats, and protect archaeological and historical resources and sites, while providing public access for educational purposes and passive outdoor recreational opportunities. It is important to sustain Scottsdale's Preserve as natural Sonoran Desert for current and future generations. *[Cross-reference Land Use; Recreation; Environmental; Planning and Conservation Elements]*

OS 1.2 Natural Open Space. Provide public and private, natural open spaces to preserve wildlife habitat, views, and sensitive historical/archeological sites, and, where appropriate, incorporate areas for passive recreation. *[Cross-reference Environmentally Sensitive Lands District (ESL); and, Land Use; Healthy Community; Arts, Culture & Creative Community; Recreation; Environmental Planning; and Conservation Elements]*

OS 1.3 Continuous Open Spaces. Develop a system of continuous open spaces that connect citywide and regionally. Such open spaces include washes (inclusive of Vista Corridors), streetscapes, wildlife corridors, trails, and canals. *[Cross-reference Character & Design; Land Use; Healthy Community; Recreation; Environmental Planning; and Conservation Elements]*

OS 1.4 Developed Open Space. Offer public and private parks and open spaces to accommodate both active and passive recreation. *[Cross-reference Land Use; Healthy Community; and Recreation Elements]*



Goal OS 2

Fulfill the Scottsdale McDowell Sonoran Preserve initiative to create an integrated desert open space and wildlife corridor system that connects to the regional Sonoran Desert open space system.

Policies

OS 2.1 Complete the land acquisition for the Scottsdale McDowell Sonoran Preserve. *[Cross-reference Land Use; Conservation; and Environmental Planning Elements]*

OS 2.2 Ensure development in proximity to the Scottsdale McDowell Sonoran Preserve respects its unique location, minimizes impacts to the natural environment, and contributes to the community's visual and physical access to open space and the mountains. *[Cross-reference Character & Design; Land Use; Healthy Community; Environmental Planning; and Conservation Elements]*

OS 2.3 Restore ecological habitat in degraded areas (e.g., burned, grazed, vehicular damage, invasive species) of the Scottsdale McDowell Sonoran Preserve. *[Cross-reference Environmental Planning and Conservation Elements]*

OS 2.4 Protect wildlife corridors, habitat, and trail crossings when planning future mobility routes through and adjacent to the Scottsdale McDowell Sonoran Preserve. *[Cross-reference Recreation; Environmental Planning; Circulation; and Conservation Elements]*



Goal OS 3

Maintain the lush desert character and wildlife corridors by protecting and preserving natural open spaces.

Policies

OS 3.1 Celebrate Scottsdale's identity as a desert city by preserving existing natural open space, supporting the preservation of the natural ecosystem, and protecting sensitive environmental features. *[Cross-reference Land Use; Conservation; and Environmental Planning Elements]*

OS 3.2 Protect environmentally sensitive lands from the impacts of development. *[Cross-reference Land Use; Conservation; and Environmental Planning Elements]*

OS 3.3 Provide opportunities for people to experience and enjoy the Sonoran Desert and mountains, while balancing public access and preservation needs.

Goal OS 4

Visually and physically connect open spaces to maintain a continuous open space system.

Policies

- OS 4.1** Develop a public trail and path system that links to other city and regional systems. *[Cross-reference Healthy Community and Recreation Elements]*
- OS 4.2** Identify and consider the positive and negative impacts of proposed projects on viewsheds. *[Cross-reference Character & Design and Land Use Elements]*
- OS 4.3** As development and redevelopment occurs along transportation corridors, ensure the preservation of mountain viewsheds, the Sonoran Desert, natural features, and landmarks that enhance the unique image and aesthetics of major streets through open space buffering. The following Visually Significant Roadway designations should be applied:

- **Scenic Corridors** should be designated along major streets where a significant landscaped buffer is needed between streets and adjacent land uses, where an enhanced streetscape appearance is desired, and where views to mountains and natural or man-made features will be maximized. Scenic Corridors may provide enhanced opportunities for open space, scenic viewing, trails, and pathways in the community.
- **Buffered Roadways** should be designated along major streets to provide an aesthetic or environmental buffer, enhance the unique image of the streetscape, and reduce the impacts that major streets may have on adjacent land uses.
- **Desert Scenic Roadways** should be designated along the one-mile and half-mile streets within Environmentally Sensitive Lands that are not already designated as Scenic Corridors or Buffered Roadways. These designations maintain and enhance open spaces along streets in environmentally sensitive locations.
- Apply a **Preserve Scenic Buffer** along streets within and adjacent to the Recommended Study Boundary (RSB) of the Scottsdale McDowell Sonoran Preserve.

[Cross-reference Character & Design; Land Use; Arts, Culture & Creative Community; Recreation; Environmental Planning; Conservation Elements; and Visually Significant Roadways Map in Character & Design Element]

- OS 4.4** Encourage the use of drainage areas, Vista Corridors, and transmission line corridors as open space opportunities. *[Cross-reference Healthy Community; Recreation; Conservation; and Public Services & Facilities Elements]*
- OS 4.5** Locate parks to enhance unique landmarks and environmentally significant areas. *[Cross-reference Character & Design; Land Use; Recreation; and Conservation Elements]*

Goal OS 5

Provide developed open space and outdoor opportunities in Scottsdale neighborhoods, giving priority to areas that are most lacking open space.

Policies

- OS 5.1** Ensure that open spaces in public ownership remain unrestricted and accessible to community members for compatible recreational use. *[Cross-reference Recreation and Public Services & Facilities Elements]*



- OS 5.2** Locate publicly accessible and useable open spaces within Growth and Activity Areas and established neighborhoods. *[Cross-reference Land Use; Healthy Community; Growth Areas; Recreation; and Neighborhood Preservation & Revitalization Elements]*

- OS 5.3** Capitalize on opportunities to create new, or connect and expand existing, open spaces in established areas when redevelopment occurs. *[Cross-reference Land Use and Conservation, Rehabilitation, & Redevelopment Elements]*

- OS 5.4** Expand resident use of city tourism venues, such as WestWorld and Scottsdale Stadium, to maximize the benefit of these facilities to the community. *[Cross-reference Character & Design; Land Use; and Recreation Elements]*

- OS 5.5** Develop a series of linked public spaces throughout downtown that are connected by pedestrian corridors. *[Cross-reference Character & Design; Land Use; Recreation; and Circulation Elements]*

Goal OS 6

Design and manage open spaces to relate to surrounding land uses and character.

Policies

- OS 6.1⁺** Evaluate the design of open spaces with the following primary determinants: aesthetics, neighborhood and service area needs, public safety, visual and functional connectivity, social and economic impacts, maintenance requirements, water consumption, drainage considerations, multi-use, Character Area, desert preservation, and wildlife corridor protection. *[Cross-reference Character & Design; Land Use; Healthy Community; Recreation; Environmental Planning; Conservation; Water Resources; Cost of Development; Safety; Public Services & Facilities; and Neighborhood Preservation & Revitalization Elements]*
- OS 6.2** Protect the different priorities and management objectives for each of the Open Space Land Use categories. *[Cross-reference Land Use Element]*
- OS 6.3** Aesthetically and sensitively integrate utilities and other public facilities into open spaces. *[Cross-reference Character & Design and Public Services & Facilities Elements]*
- OS 6.4** Ensure development plans respect existing topography, view corridors, wildlife corridors, and open space. Where possible, enhance existing viewsheds as areas are developed and redeveloped. *[Cross-reference Character & Design; Land Use; Environmental Planning; and Conservation Elements]*
- OS 6.5** Provide ample shade in public open spaces as appropriate for the type of open space. *[Cross-reference Character & Design; Recreation; and Environmental Planning Elements]*

Goal OS 7⁺

Manage a comprehensive open space program that is responsive to public and environmental needs.

Policies

- OS 7.1** Continue to encourage active citizen involvement in the development and management of open space. *[Cross-reference Community Involvement Element]*
- OS 7.2** Provide consistent and effective operations and maintenance for all open space facilities. *[Cross-reference Public Services & Facilities Element]*
- OS 7.3** Promote “docent” or “steward” programs to help maintain open spaces and lower associated operational costs. *[Cross-reference Community Involvement and Healthy Community Elements]*
- OS 7.4** Protect important natural areas, parks, and other open space systems as primary elements in growth planning and endangered species and watershed protection. *[Cross-reference Land Use; Growth Areas; Environmental Planning; and Conservation Elements]*

Goal OS 8⁺

Acquire new, expand existing, and improve established open spaces for public use.

Policies

- OS 8.1** Require landowners in the development process to dedicate useable public open space in new development. *[Cross-reference Character & Design; Land Use; Recreation; Environmental Planning; Conservation; Public Services & Facilities; and Neighborhood Preservation & Revitalization Elements]*
- OS 8.2** Expand the provision of public open spaces through public/private partnerships. *[Cross-reference Character & Design; Land Use; and Recreation Elements]*



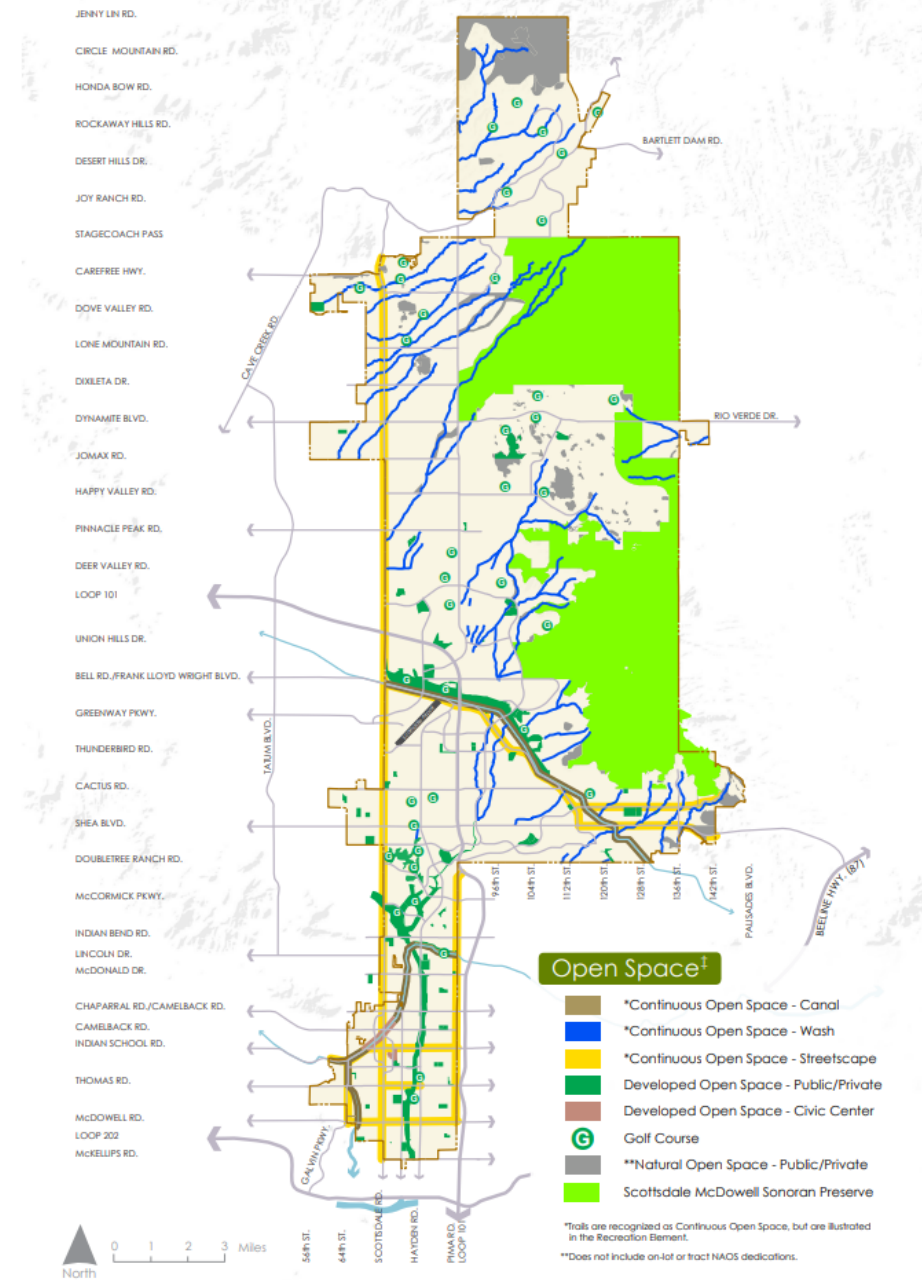
- OS 8.3** Require new development and redevelopment to connect and provide public access to neighboring open spaces, park sites, or planned open spaces. *[Cross-reference Character & Design and Land Use Elements]*
- OS 8.4 †** Encourage public acquisition of natural or developed open space through direct purchase, purchase of development rights, purchase of open space easements, donations, or other means. *[Cross-reference Land Use Element]*
- OS 8.5 †** Create usable open spaces from existing rights-of-way, sidewalk widening, street realignment, development of trails, and other creative solutions. *[Cross-reference Character & Design; Recreation; Circulation; and Public Services & Facilities Elements]*
- OS 8.6 †** Renovate, renew, and upgrade city parks and recreation facilities in response to changing community demographics, priorities, and needs. *[Cross-reference Public Services & Facilities Element]*
- OS 8.7** Ensure the interconnectivity of trails and streets while safeguarding existing rights-of-way. *[Cross-reference Circulation and Bicycling Elements]*
- OS 8.8** Increase the city's tree canopy to provide more shade, particularly in high-volume pedestrian areas, such as public parks, recreation facilities, and Growth and Activity Areas.
- OS 8.9** Provide open space access and trailhead areas with facilities for public use. *[Cross-reference Recreation and Public Buildings Elements]*

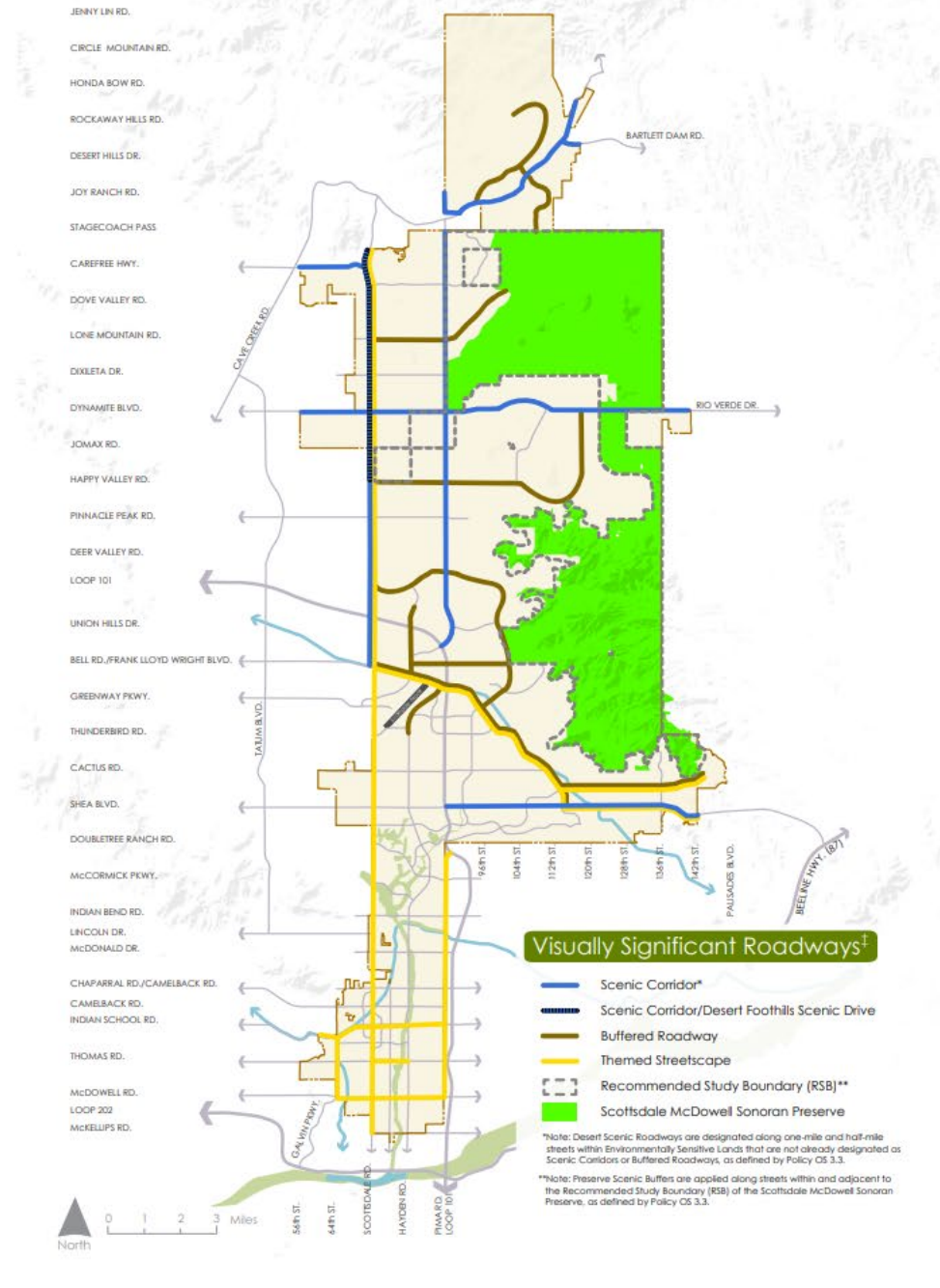
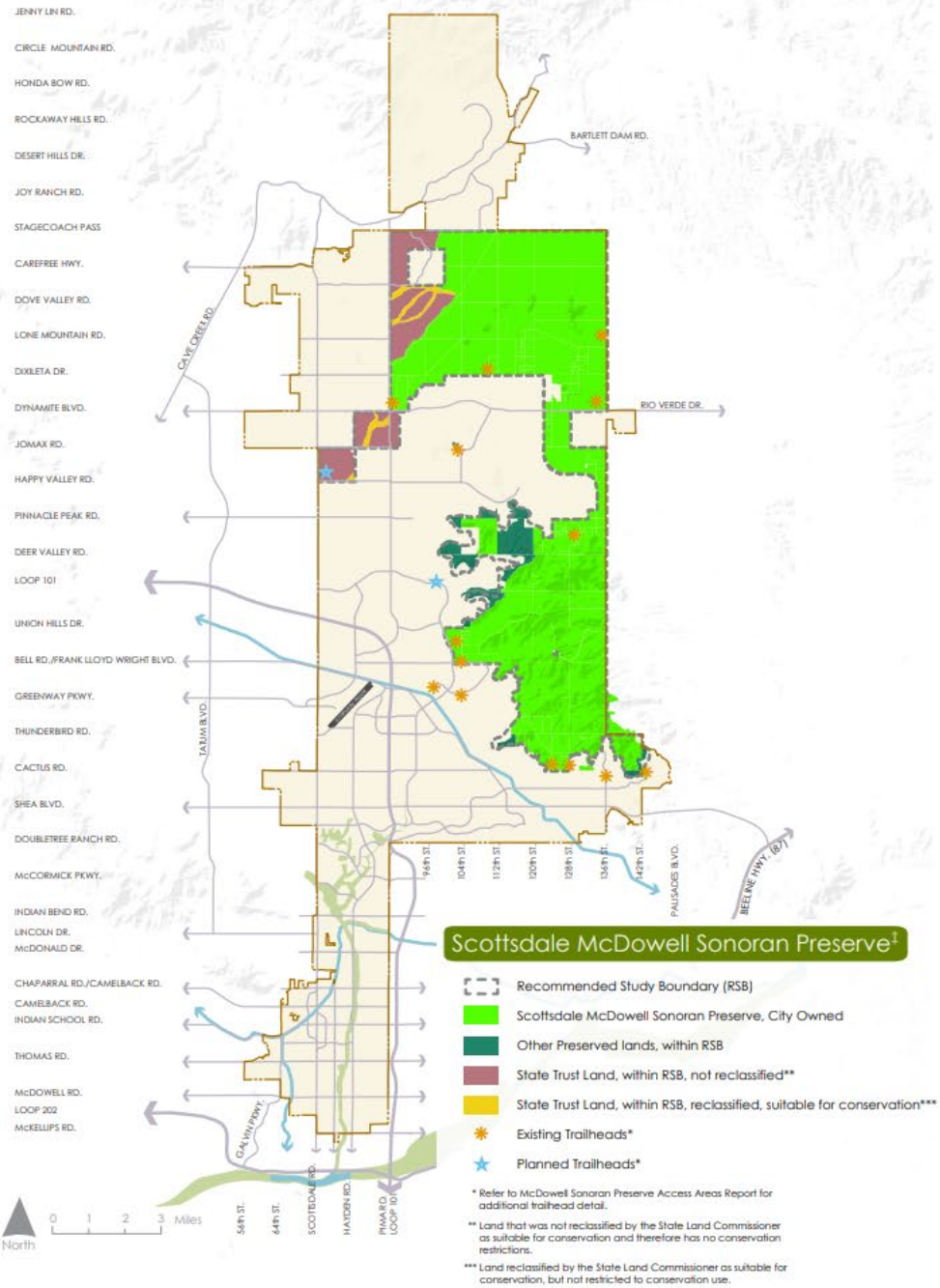
Goal OS 9 †

Cooperate with other agencies to preserve, protect, connect, maintain, and expand the regional open space system.

Policies

- OS 9.1 †** Engage with other public and private agencies on the planning and development of open space sites and facilities next to city boundaries.
- OS 9.2 †** Support the regional open space network and coordinate with adjacent jurisdictions to supply open space systems, interconnected trail networks, recreation opportunities, stormwater drainage, and sensitive wildlife habitat and migration routes. *[Cross-reference Recreation; Environmental Planning; and Conservation Elements]*





Environmental Planning Element ‡

Topics covered in this element include Sonoran Desert habitat protection, air quality, recycling, green building, and water quality

- Goals Include (‡Indicates State Statute Required):

Goal EP 1 Protect and enhance habitats

Goal EP 2 Demonstrate environmental stewardship

Goal EP 3 Improve air quality‡

Goal EP 4 Expand recovery, reuse, and recycling

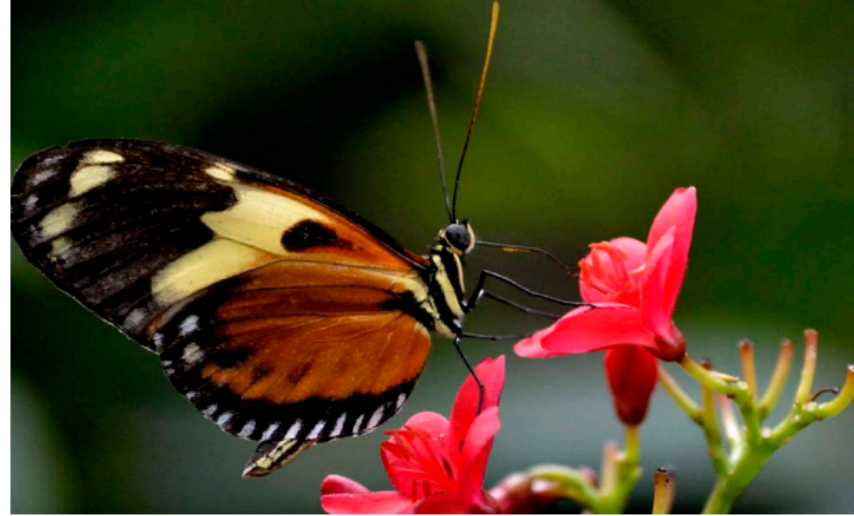
Goal EP 5 Encourage environmentally sound design

Goal EP 6 Surpass water quality standards‡

Goal EP 7 Reduce heat islands

Goal EP 8 Plan, prepare, adapt for climate impacts





ENVIRONMENTAL PLANNING ELEMENT⁺

Scottsdale is a Sonoran Desert community, and citizens recognize that the unique and delicate desert environment is valuable for community health, character, economic vitality, and quality of life. We pride ourselves as a leader and are committed to environmental stewardship and sustainability.

The city's environment includes both the ecological systems, which sustain Sonoran vegetation and wildlife, and natural and man-made elements that provide clean air and water, protect the community from hazards, and create a naturally beautiful and enjoyable setting.

Without careful planning and stewardship, our healthy natural systems may be negatively impacted by regional population growth, urban development, climate change, and everyday life. Some of the impacts can be rising temperatures, poor air quality, resource depletion, increased waste, and stress on our water supplies. To preserve Scottsdale as a highly livable city that is environmentally and economically healthy, Scottsdale proactively seeks ongoing mitigation and resiliency solutions to these challenges. This element provides goals and policies for protecting and enhancing Scottsdale's natural and human habitats and built environments for current and future generations.

Goals and Policies

Goal EP 1

Protect and enhance Scottsdale's human and Sonoran Desert habitats.

Policies

- EP 1.1** Retain Scottsdale's Sonoran Desert aesthetic values and heritage. *[Cross-reference Character & Design; Arts, Culture & Creative Community; and Conservation Elements]*
- EP 1.2 †** Protect the unique, rare, and significant features of Scottsdale's natural environment, and educate landowners and developers on their preservation options using the Environmentally Sensitive Lands District (ESL) as a guide. *[Cross-reference Character & Design; Open Space; and Conservation Elements]*
- EP 1.3** Require developments to retain and integrate the Sonoran Desert ecosystem. *[Cross-reference Character & Design and Conservation Elements]*
- EP 1.4 †** Preserve local plants, wildlife, and natural resources to maintain the biodiversity and long-term sustainability of the area's ecology. *[Cross-reference Character & Design and Conservation Elements]*
- EP 1.5** Integrate environmental quality protection into all phases of local planning, policy, and development. *[Cross-reference Character & Design and Conservation Elements]*



Goal EP 2

Demonstrate and expand the city's leadership in environmental stewardship and sustainability.

Policies


- EP 2.1** Educate and inform the community of the significance and fragility of the Sonoran Desert environment and the city's environmental protection efforts, including the Environmentally Sensitive Lands District (ESL) and its role in securing Natural Area Open Space. *[Cross-reference Open Space and Conservation Elements]*
- EP 2.2** Support and encourage citizens, groups, community partnerships, and local businesses to maintain and enhance environmental features and landscapes. *[Cross-reference Open Space and Community Involvement Elements]*
- EP 2.3** Foster community stewardship and a sense of personal responsibility for the natural environment. *[Cross-reference Open Space; Healthy Community; and Community Involvement Elements]*
- EP 2.4** Expand Scottsdale's Green Building Program to maintain regional and national leadership in green and low-impact development. *[Cross-reference Conservation and Energy Elements]*



Goal EP 3 †

Participate in local and regional efforts to improve air quality.


Policies

- EP 3.1** Reduce automobile emissions through traffic management; transportation improvements; promotion of a wide variety of mobility options; travel demand reduction strategies; expansion of regional connectivity; and use of electric and alternative fuel vehicles. *[Cross-reference Energy; Circulation; and Bicycling Elements]*
- 
- EP 3.2** Actively participate in regional coordination, partnerships, and funding decisions for air quality improvement and reduced vehicle emissions and trips.
- EP 3.3** Expand the use of alternative mobility options, for example electric and clean fuel alternatives, through investment in environmental infrastructure such as electrical recharge and clean-fuel refilling stations, to achieve or exceed regional clean air goals. *[Cross-reference Energy Element]*
- EP 3.4** Seek to reduce activities that contribute to air pollution and significant air pollution events by promoting alternatives such as the conversion of wood to gas fireplaces and gas to electric yard equipment.
- EP 3.5** Reduce the community's contribution to regional dust and particulate air pollution created by man-made sources, such as construction, maintenance equipment, vehicles, and untreated vacant lots/unpaved parking areas.

Goal EP 4

Expand the circular economy by maximizing resource recovery, reuse and recycling, and promoting use of recycled, recyclable, and renewable materials.

Policies

- EP 4.1** Maintain and expand citywide recycling programs, particularly for tourist areas, businesses, multi-family housing, institutional facilities, special events, and public spaces. *[Cross-reference Public Services & Facilities Element]*
- EP 4.2** Encourage private establishments to minimize waste generation, and establish effective programs for waste reduction, reuse, and recycling of resources. *[Cross-reference Public Services & Facilities Element]*
- EP 4.3** Strive for zero waste in city operations.
- EP 4.4** Whenever possible, use paperless media and limit the use of hard copy materials for city programs and projects. *[Cross-reference Community Involvement Element]*
- EP 4.5** Ensure the recycling and/or reuse of building materials to reduce construction waste.
- EP 4.6** Support regional waste reduction efforts, policies, and regulations.
- EP 4.7** Identify, promote, and support opportunities to use solid waste and recycled materials as marketable commodities.
- EP 4.8** Strive to reduce single-use, non-recyclable, and non-compostable packaging and bags.
- 
- EP 4.9** Implement programs and initiatives, such as composting, to reduce the amount of biodegradable waste going to the landfill. *[Cross-reference Public Services & Facilities Element]*
- EP 4.10** Promote zero waste certified events in the city, such as the Waste Management Open, as a means to educate the community on the importance of understanding and reducing waste.
- EP 4.11** Adopt city green purchasing policies and practices.
- EP 4.12** Promote commercial and multi-family recycling and green waste diversion.

Goal EP 5

Encourage environmentally sound green buildings and low-impact site plans that support sustainable desert living.

Policies

- EP 5.1 Protect and enhance the natural desert elements of all development sites. *[Cross-reference Character & Design; Open Space; and Conservation Elements]*
- EP 5.2 Increase the use of green infrastructure, including low-impact development (LID) stormwater management techniques, such as curb openings and permeable pavement. *[Cross-reference Conservation Element]*
- EP 5.3 Construct durable and sustainable buildings using green building principles. *[Cross-reference Character & Design; Housing; Conservation; and Energy Elements]*
- EP 5.4 Promote passive solar site and building design strategies that recognize and respond to the Sonoran Desert climate. *[Cross-reference Character & Design and Energy Elements]*
- EP 5.5 Expand Green Building construction standards to include all new and remodeled residential and commercial buildings. *[Cross-reference Character & Design and Energy Elements]*
- EP 5.6 Reduce regulatory barriers to encourage green commercial and residential building retrofits. *[Cross-reference Character & Design and Energy Elements]*



Goal EP 6 †

Meet or surpass all applicable water quality standards.

Policies

- EP 6.1 Continue to provide a safe and healthy environment for community members through water and wastewater treatment processes. *[Cross-reference Water Resources Element]*
- EP 6.2 Ensure Scottsdale drinking water continues to meet or surpass all Federal Environmental Protection Agency standards by updating or adding necessary treatment technologies to existing facilities. *[Cross-reference Water Resources Element]*
- EP 6.3 Maintain the Industrial Pretreatment Program to ensure businesses and industries meet city, state, and federal regulations to protect publicly owned wastewater collection and treatment systems. *[Cross-reference Water Resources Element]*
- EP 6.4 Partner with public agencies, water providers, and water industry associations to participate in water quality and treatment research for the benefit of Scottsdale citizens. *[Cross-reference Water Resources and Conservation Elements]*

Goal EP 7

Identify and reduce heat islands.

Policies

- EP 7.1 Identify areas most impacted by the heat island effect, and prioritize mitigation for these areas to reduce heat impacts.
- EP 7.2 Incorporate development strategies such as shared parking models and the use of “cool materials” (e.g., landscaping, green roofs, reflective pavement, heat reduction asphalt coatings, permeable concrete, and treated dirt areas) to help reduce the heat island effect. *[Cross-reference Character & Design Elements]*
- EP 7.3 Develop and support programs, such as a Tree Canopy Plan, that identify and increase vegetation and shading in areas of high pedestrian activity. *[Cross-reference Character & Design and Open Space Elements]*
- EP 7.4 Promote the long-term management and maintenance of urban and open area vegetation and protect and expand the provision of private and public open spaces to reduce the heat island effect.
- EP 7.5 Minimize asphalt and promote alternative parking surfaces.
- EP 7.6 Engage with, learn from, and collaborate with regional, statewide, and national governmental and other entities for best practices on heat mitigation strategies.

Goal EP 8

Plan, prepare, and adapt for significant climate impacts on city infrastructure and operations.

Policies

- EP 8.1** Develop, adopt, and implement climate action and resiliency strategies that address areas of climate mitigation planning such as emissions, drought, energy, transportation, and extreme heat.
- EP 8.2** Increase energy efficiency in buildings and vehicle fleets.
- EP 8.3** Encourage use of clean, renewable energy sources.
- EP 8.4** Employ green building and green infrastructure best practices.
- EP 8.5** Establish land use and mobility plans that decrease transportation carbon emissions.
- EP 8.6** Encourage waste reduction and water conservation.

Conservation Element[‡]

Topics covered in this element include natural resource management, water conservation, stormwater management and biodiversity

- Goals Include (‡Indicates State Statute Required):

Goal CONSV 1 Achieve a sustainable balance‡

Goal CONSV 2 Protect ecosystems‡

Goal CONSV 3 Protect watersheds‡

Goal CONSV 4 Conserve water‡

Goal CONSV 5 Minimize erosion‡





CONSERVATION ELEMENT⁺

Scottsdale is continuously improving efforts to safeguard and conserve its environmental resources. The community is dedicated to the efficient use of natural resources and steadfastly works toward the long-term sustainability of non-renewable resources. Many resources, such as wildlife, watersheds, and others, however, cross geographic and jurisdictional boundaries. Therefore, regional coordination is essential in achieving the community's conservation goals.

One natural resource that is critical to our daily lives is water. As citizens, we can contribute to water conservation by consuming less, using water more efficiently, and avoiding waste; installing rainwater harvesting systems; maximizing the use of native plants for landscaping; and reusing treated wastewater.

As Scottsdale matures, development will place pressure on lands at the urban fringe. This can have unintended consequences on the natural environment, including degradation of water quality, loss of habitat, and diminished scenic views. The challenge remains in achieving a balance between orderly development and the protection of Scottsdale's natural resources.

The goals and policies in this element guide Scottsdale's conservation efforts to provide a healthy and diverse environment for future generations.

Goals and Policies

Goal CONSV 1 †

Achieve a sustainable balance between the conservation of natural resources and development of the built environment.

Policies

- CONSV 1.1** Promote local and regional public and private partnerships to reduce natural resource consumption, such as aggressive conservation, reuse, and recycling programs. *[Cross-reference Environmental Planning and Public Services & Facilities Elements]*
- CONSV 1.2** Use best practices in natural resource management to enhance, restore, and sustain our Sonoran Desert ecosystem. *[Cross-reference Environmental Planning and Public Services & Facilities Elements]*
- CONSV 1.3** Promote local and regional cooperation among natural resource management agencies, professionals, and local school districts in developing environmental education materials and outreach programs. *[Cross-reference Environmental Planning Element]*
- CONSV 1.4** Encourage landscape designs that promote water conservation, prevent erosion, reduce the heat island effect, and decrease stormwater runoff. *[Cross-reference Character & Design; Open Space; and Environmental Planning Elements]*
- CONSV 1.5** Protect and restore ecosystems that maintain water quality, reduce flooding, and enhance sustainable resource development. *[Cross-reference Environmental Planning; Water Resources; and Safety Elements]*

**Goal CONSV 2 †**

Protect and manage Sonoran Desert biodiversity and native ecosystems.

Policies

- CONSV 2.1** Preserve, salvage, and/or restore native plants, wildlife habitat, and natural resources to maintain the biodiversity and long-term sustainability of the area's desert ecology and character. *[Cross-reference Character & Design and Environmental Planning Elements]*
- CONSV 2.2** Encourage landscaping that limits the amount of grass and makes optimal use of native desert plants. *[Cross-reference Character & Design and Environmental Planning Elements]*
- CONSV 2.3** Maintain natural washes as wildlife movement corridors and avoid disturbances to preserve habitat linkages. *[Cross-reference Open Space and Environmental Planning Elements]*
- CONSV 2.4** Identify, protect, and restore habitats for endangered, rare, and threatened species. *[Cross-reference Environmental Planning Element]*
- CONSV 2.5** Prevent the introduction and control further spread of invasive species. *[Cross-reference Environmental Planning Element]*
- CONSV 2.6** Incorporate and maintain wildlife habitat elements in park design and common area landscaped areas. *[Cross-reference Character & Design; Open Space; Recreation; and Environmental Planning Elements]*
- CONSV 2.7** Strive to reduce pesticide use by employing non-chemical and less-toxic pest management strategies.



Goal CONSV 3 †

Protect the integrity of watersheds.

Policies

CONSV 3.1 † Identify potential sources of watershed contamination, continue to remediate groundwater contamination, and apply preventative measures to avoid future contamination of groundwater resources. *[Cross-reference Environmental Planning and Water Resources Elements]*

CONSV 3.2 Monitor stormwater runoff to identify opportunities to reduce surface water pollution. *[Cross-reference Environmental Planning Element]*

CONSV 3.3 Improve stormwater quality through best management practices.

CONSV 3.4 Explore groundwater contamination prevention techniques, such as minimizing use of chemicals for landscape maintenance. *[Cross-reference Environmental Planning Element]*

CONSV 3.5 Identify sources responsible for watershed contamination and educate the community on watershed pollution prevention measures. *[Cross-reference Environmental Planning and Water Resources Elements]*

CONSV 3.6 Use natural watercourse and watershed pollution management techniques, such as “green” or low-impact infrastructure, vegetation, erosion control measures, and settling ponds. *[Cross-reference Environmental Planning Element]*



Goal CONSV 4 †

Conserve water and encourage the reuse of wastewater.

Policies

CONSV 4.1 Continue to maintain and expand the reclaimed water distribution system, as feasible, and continue to develop and implement a salinity reduction program for reuse of reclaimed water. *[Cross-reference Water Resources Element]*

CONSV 4.2 Consider multiple-use facilities when planning resource conservation programs, including the integration of recharge sites with natural or constructed habitat, as allowed per the Arizona Department of Environmental Quality and Arizona Department of Water Resources.

CONSV 4.3 Continue to thoroughly review development impacts on water use, and encourage development design that fosters water conservation. *[Cross-reference Character & Design; Environmental Planning; Water Resources; and Cost of Development Elements]*

CONSV 4.4 Effectively monitor and maintain the water distribution system to minimize water conveyance loss. *[Cross-reference Water Resources Element]*

CONSV 4.5 Increase recycled water use and encourage the adoption of water conservation measures and best management practices by local industries. *[Cross-reference Water Resources Element]*

CONSV 4.6 Continue to inform, educate, and incentivize the community regarding water conservation practices. *[Cross-reference Water Resources Element]*

CONSV 4.7 Support rainwater harvesting and stormwater capture in site planning and building design. *[Cross-reference Character & Design; Environmental Planning; and Water Resources Elements]*

CONSV 4.8 Explore new and evolving water conservation and reuse technologies and use them as appropriate. *[Cross-reference Water Resources Element]*

CONSV 4.9 Review and revise city code and ordinance requirements that potentially hinder water conservation practices. *[Cross-reference Water Resources Element]*

Goal CONSV 5 †

Retain and prevent erosion of significant watercourses and water bodies.*Policies*

- CONSV 5.1** Discourage and minimize clearing and grading within sites located in areas designated as Environmentally Sensitive Lands (ESL). *[Cross-reference Character & Design; Open Space; and Land Use Elements]*
- CONSV 5.2 †** Maintain existing and promote wise placement of native plants as the primary means to control erosion and retain Sonoran Desert character. *[Cross-reference Character & Design and Environmental Planning Elements]*
- CONSV 5.3 †** Strive to restore erosion-damaged areas to their previous conditions to reduce water consumption and restore desert wildlife habitat. *[Cross-reference Environmental Planning Element]*
- CONSV 5.4 †** Encourage preservation of the 100-year floodplains and washes as natural drainage ways, where possible. If hazard prevention measures are necessary, use context-sensitive design elements. *[Cross-reference Character & Design; Open Space; and Safety Elements]*
- CONSV 5.5** Manage streams, washes, and floodplains to maintain their multiple biological, physical, and social values.
- CONSV 5.6** For flood control channel design, a high priority should be placed on:
- Sensitive aesthetic treatment;
 - Neighborhood character compatibility; and
 - Effects on the entire ecosystem, including plant and animal habitat.

[Cross-reference Character & Design; Environmental Planning; and Neighborhood Preservation & Revitalization Elements]

Water Resources Element ‡

Topics covered in this element include long-term water supply and drought preparation

- Goals Include (‡Indicates State Statute Required):

Goal WR 1 Ensure long-term water supplies‡

Goal WR 2 Prepare for climatic impacts





WATER RESOURCES ELEMENT[‡]

Scottsdale has a multi-faceted water resources portfolio aimed at providing the community with a reliable long-term assured water supply. This portfolio consists of surface water supplies, which include Salt and Verde River water from Salt River Project and Colorado River water from Central Arizona Project; groundwater supplies; and reclaimed water. Scottsdale's water resource systems include water supplies, water treatment, water transmission and delivery, wastewater collection, wastewater treatment systems, and both reclaimed and irrigation water distribution systems.[‡]

As required by the State of Arizona, Scottsdale has an assured water supply designation that ensures sufficient water supplies are available for the next 100 years before allowing any new development. Scottsdale has focused on obtaining surface water supplies, increasing recharge efforts, and reducing groundwater pumping. In 2006, the city achieved a significant milestone by reaching safe-yield in groundwater usage, where groundwater recharge is greater than the amount pumped. Scottsdale is demonstrating responsible stewardship of groundwater resources and maintaining a sustainable water supply for future generations by not withdrawing more groundwater than is replenished through natural or artificial recharge.

Although Scottsdale manages and protects the water supply, the first and most critical step in planning and preparing for drought is proactive conservation of water by using water efficiently, reducing waste, and maximizing use of reclaimed water and harvested rainwater. All citizens can help ensure we have enough water for future generations by efficient use of water on a daily basis.

The goals and policies of the Water Resources Element ensure that Scottsdale continues to provide safe, reliable, and quality drinking water to the community, now and into the future.

Goals and Policies

Goal WR 1 †

Ensure renewable, long-term water supplies for the community.

Policies

- WR 1.1 †** Maintain State-mandated safe-yield conditions in the city's water service area by minimizing groundwater pumping and maximizing the amount of groundwater recharge. *[Cross-reference Conservation and Water Resources Development Elements]*
- WR 1.2 †** Protect and continually monitor the existing supply and ensure adequate future supply of renewable water sources, including those derived from Colorado River and Salt River Project water rights, credits, and/or reclaimed water, to meet growth projections. *[Cross-reference Conservation Element]*
- WR 1.3 †** Update the city's 100-year Assured Water Supply designation as new sources of water supply are acquired.
- WR 1.4** Continue to manage water and wastewater resources as critical parts of a sustainable community. *[Cross-reference Environmental Planning; Conservation; and Public Services & Facilities Elements]*
- WR 1.5** Encourage private septic system users to connect to the city's sewer collection system.
- WR 1.6** Continue to provide a reliable, high-quality water and wastewater system that achieves the highest level of customer satisfaction.
- WR 1.7 †** Site, drill, construct, and equip new groundwater recharge wells in the most effective locations available to help stabilize groundwater levels, protect water supplies, and mitigate land subsidence.
- WR 1.8** Ensure the city's drinking water distribution system can effectively deliver drinking water to every part of the water service area. *[Cross-reference Public Services & Facilities Element]*
- WR 1.9** Continue working with regional partners, other government entities, and tribal communities to facilitate shared water demand and sustainable management of water resources.
- WR 1.10** Proactively maintain and replace water delivery and effluent recapture system infrastructure. *[Cross-reference Public Services & Facilities Element]*

- WR 1.11** Expand and modify the reclaimed water distribution system, as feasible, to enhance groundwater recharge and reuse. *[Cross-reference Conservation Element]*
- WR 1.12** Enhance procedures, through best management practices, to guard against security breaches to water supply.

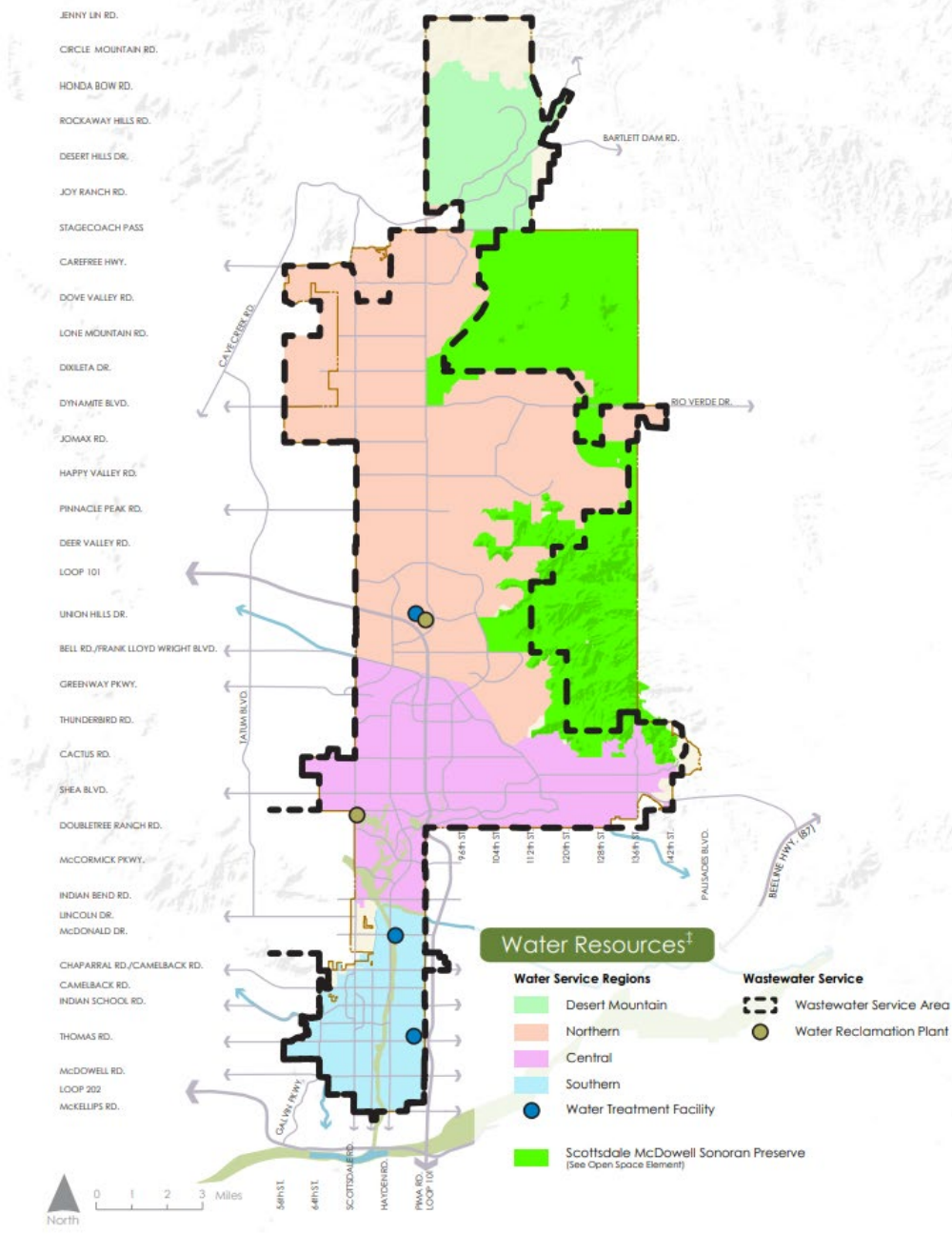
Goal WR 2

Plan, prepare for, and adapt to significant climatic impacts on the water supply, such as short-term and extended drought.

Policies

- WR 2.1** Educate the public on preparedness, planning, and response for drought and other emergencies affecting the water supply. *[Cross-reference Conservation and Safety Elements]*
- WR 2.2** Closely monitor drought conditions and implement the mitigation measures required. *[Cross-reference Conservation and Safety Elements]*
- WR 2.3** Minimize the impacts of drought on residents by using short-term and long-term approaches to drought preparedness, response, and recovery. *[Cross-reference Safety Element]*
- WR 2.4** Effectively communicate the procedures and available resources to the community in the event of extreme drought or other emergency. *[Cross-reference Safety Element]*
- WR 2.5** Update Scottsdale's Drought Management Plan every five years to reflect current and projected water supplies, demands, and infrastructure with an emphasis on water use efficiency. *[Cross-reference Conservation and Safety Elements]*
- WR 2.6** Perform water-use audits of city facilities and programs to assess and reduce water usage. *[Cross-reference Recreation, Open Space, Public Services & Facilities, and Public Buildings Elements]*
- WR 2.7** Expand the Water Conservation Program to increase efficiency and reduce per capita usage.





Energy Element[‡]

Topics covered in this element include energy efficiency, city facilities, and renewable energy sources.

- Goals Include (‡Indicates State Statute Required):

Goal E 1 Become a net-zero community

Goal E 2 Reduce energy consumption

Goal E 3 Promote energy efficiency

Goal E 4 Increase energy efficiency of city facilities

Goal E 5 Develop renewable energy sources‡





ENERGY ELEMENT⁺

A safe, reliable energy supply is important to commerce and the city's overall health. Using renewable energy systems allows Scottsdale to become more independent and less reliant on greenhouse gas emitting fossil fuels. Moving to clean energy sources demonstrates the city's commitment to a sustainable energy future. Furthermore, reducing energy consumption and encouraging conservation per capita are critical to future economic and environmental vitality.

In Scottsdale, the most viable renewable energy resource is solar energy. Other sources of renewable energies include water and wind generation; however, Scottsdale has no significant sources of these other renewable energy generation types.

The city's total demand for energy will increase with projected population growth. Therefore, Scottsdale must provide flexibility and incentives for energy efficiency and renewable energy technologies. Furthermore, protecting existing energy resources from security breaches and other supply and distribution vulnerabilities will remain important to ensure no permanent or long-term damage to power system operations occurs.

The goals and policies included in this element seek to balance the energy needs of consumers with the community's clean and renewable energy sources.

Goals and Policies

Goal E 1

Work toward becoming a net-zero energy community that balances energy efficiency with renewable energy generation.

Policies

- E 1.1 † Encourage and provide incentives for efficient use of energy, including the use of solar energy.
- E 1.2 † Assess and identify policies and practices that provide for greater uses of renewable energy sources.
- E 1.3 Support off-site or shared renewable energy generation for a group of buildings or entire neighborhood.
- E 1.4 † Consider the use of alternative finance options to achieve renewable energy supply goals.
- E 1.5 Promote renewable energy-ready designs for new construction and major remodels. [Cross-reference Character & Design and Environmental Planning Elements]
- E 1.6 Promote energy efficiency improvements for existing residential properties and educate property owners on opportunities for such improvements.



Goal E 2

Reduce per capita energy consumption and promote energy efficiency.

Policies

- E 2.1 Develop public-private partnerships to provide energy efficiency education and incentive programs.
- E 2.2 Promote use and provide education on the benefits of energy efficiency best practices.
- E 2.3 Explore emerging smart energy technologies.
- E 2.4 Support development of regional waste-to-energy facilities. [Cross-reference Environmental Planning and Public Services & Facilities Elements]
- E 2.5 Encourage local industries to adopt energy efficiency measures and renewable energy to minimize the environmental impacts of their operations.
- E 2.6 Support efforts to make energy usage and its associated impacts more transparent for greater understanding by property owners and tenants.

Goal E 3

Promote building and site designs that maximize energy efficiency.

Policies

- E 3.1** Encourage the use of natural properties and sustainable building systems (e.g., sun, shade, thick walls, insulation) to reduce the demand for and use of mechanical cooling and heating systems. *[Cross-reference Character & Design and Environmental Planning Elements]*
- E 3.2** Encourage the use of drought tolerant landscaping to reduce summer solar heat gain. *[Cross-reference Character & Design and Environmental Planning Elements]*
- E 3.3** Promote solar energy opportunities in building and site design. *[Cross-reference Character & Design and Environmental Planning Elements]*
- E 3.4** Incorporate healthy, resource- and energy-efficient materials and methods in design, construction, and remodeling of buildings. *[Cross-reference Character & Design; Housing; Healthy Community; Conservation; and Environmental Planning Elements]*
- E 3.5** Orient buildings and lots in ways that minimize summer solar heat gain, maximize roof solar access and natural ventilation, and limit roof solar access obstructions of neighboring structures. *[Cross-reference Character & Design and Environmental Planning Elements]*
- E 3.6** Improve the energy efficiency of the building envelope, heating and cooling systems, lighting, and appliances.



Goal E 4

Seek creative means to increase the energy efficiency of city facilities and operations.

Policies

- E 4.1** Promote fuel conservation in city vehicles, and use clean, alternative fuels.
- E 4.2** Reduce energy consumption in the provision of municipal services and maintenance of city infrastructure, without affecting the quality and quantity of services. *[Cross-reference Public Services & Facilities and Public Buildings Elements]*
- E 4.3** Develop strategies to lower utility costs and reinvest savings into energy efficiency measures and renewable energy. *[Cross-reference Public Buildings Element]*
- E 4.4** Perform energy audits and benchmarking of city facilities, projects, and programs to assess their energy efficiency potential. *[Cross-reference Public Services & Facilities and Public Buildings Elements]*
- E 4.5** Incorporate renewable energy technologies in the design of city facilities. *[Cross-reference Public Buildings Element]*
- E 4.6** Aim for net zero energy in city operations through the use of public-private partnerships and other means available.

Goal E 5 †

Support the development of renewable energy sources that are compatible with Scottsdale's environmental and aesthetic goals.

Policies

- E 5.1** Support regional efforts to increase the supply of energy from renewable sources, distributed generation, and cogeneration. *[Cross-reference Public Services & Facilities Element]*
- E 5.2** Optimize existing energy infrastructure and encourage interconnection with smart grid technologies. *[Cross-reference Public Services & Facilities Element]*
- E 5.3** Diversify the city's energy supply sources with emphasis on cost-effective, efficient, clean, renewable, reliable, and secure energy sources. *[Cross-reference Public Services & Facilities Element]*
- E 5.4** Promote clean and renewable energy and fuel sources to reduce the community's dependence on fossil fuels.

Implementation Chapter

Implementation is the goal of the General Plan

- Recommend measures to put the Plan into effect
- Promote public interest and understanding
- Communicate with other public officials, agencies and organizations
- Develop specific plans to implement the General Plan
- To receive and utilize grants or other financial assistance
- Render an annual report to City Council on the status of the General Plan
- Create and maintain a Capital Improvement Program (CIP)

SUSTAINABILITY & ENVIRONMENT						
Program	Elements Implemented	Years 1-5	Years 5-10	Years 10-20	On-Going/ Periodic	Responsible Agency
Assured Water Supply	EV, S, WR				■	Water Resources
Drought Management Plan Updates	WR, S		■			Water Resources
Energy Efficiency & Clean Fuel Updates	CD, CRR, E, EP, H, LU	■				Environmental Initiatives
Green Building Program/Energy & Building Code Review/Update	CD, CONSV, CRR, E, EP, GA, H, HC, NPR, PB				■	Environmental Initiatives
Heat Mitigation Plan	CD, CONSV, EP	■				Environmental Initiatives
Infrastructure Improvements Plan	COD, CONSV, CRR, EV, GA, OS, PSF	■				Water Resources
Integrated Water Resources Master Plan Update	COD, CONSV, CRR, EP, LU, WR	■				Water Resources
Scottsdale McDowell Sonoran Preserve Land Acquisition	ACC, EP, EV, LU, OS, R, T				■	Preservation
Scottsdale McDowell Sonoran Preserve Access Improvements	ACC, CONSV, HC, EP, EV, LU, NPR, OS, R, T				■	Community Services, Preservation
Native Plant Ordinance	CD, CONSV, EP, GA, H, HC, NPR, OS		■		■	Planning & Development
Net-Zero Energy Strategic Plan	CRR, E, EP, LU	■				Environmental Initiatives
Recycling/Solid Waste Programs Review/Update	COD, CONSV, E, EP, PSF	■			■	Solid Waste
Stormwater Program & Master Plan Update	CRR, CONSV, EP, LU, OS, PSF, S		■		■	Stormwater
Sustainability/Resiliency Plan	CD, CONSV, E, EP, EV, GA, H, HC, LU, OS, PB	■				Environmental Initiatives
Amend Code and Ordinances to align with Sustainability Plan	CD, CONSV, E, EP, EV, GA, H, HC, LU, OS, PB	■				Environmental Initiatives
Water Conservation Program	CONSV, EP				■	Water Resources
Water Quality Reporting	CI, CONSV, EP, WR				■	Water Resources

ELEMENT LEGEND
ACC= Arts, Culture & Creative Community
All- All Elements/Entire General Plan
B= Bicycling
C= Circulation
CD= Character & Design
CI= Community Involvement
COD= Cost of Development
CONSV= Conservation
CRR= Conservation, Rehabilitation, & Redevelopment
E= Energy
EDU= Education
EP= Environmental Planning
EV= Economic Vitality
GA= Growth Areas
H= Housing
HC= Healthy Community
LU= Land Use
NPR= Neighborhood Preservation & Revitalization
OS= Open Space
PB= Public Buildings
PSF= Public Services & Facilities
R= Recreation
S= Safety
T= Tourism
WR= Water Resources

Current Work Of SEAC

- Supported Energy Efficiency & Clean Fuel Updates;
- Supported Green Building Program/Energy & Building Code Review/Update; and
- Supporting initiatives or efforts to further the city in its ability to establish a Sustainability/ Resiliency Plan:
 - Arizona State University and the Rob and Melani Walton Sustainability Solutions Services (RMWSSS) Strategies for a Cooler Scottsdale Study;
 - Working with ASU/RMWSSS to define the scope of work for the development of the Scottsdale Sustainability Plan; and

Scottsdale General Plan 2035

OVERVIEW

The General Plan is the primary tool for guiding the future of the city. It contains the community's goals and policies on character and design, land use, open space and the natural environment, business and economics, neighborhood vitality, transportation and growth. It shapes the physical form of the city, yet it also addresses other aspects, such as community services, protection of desert and mountain lands, and the character of neighborhoods.

The General Plan provides a guide for day-to-day, short- and long-term decision making. Scottsdale's General Plan has three interrelated roles:

- It is an expression of the community vision, aspirations, values, and goals;
- It is a decision-making guide; and
- It fulfills State and City Charter legal requirements.

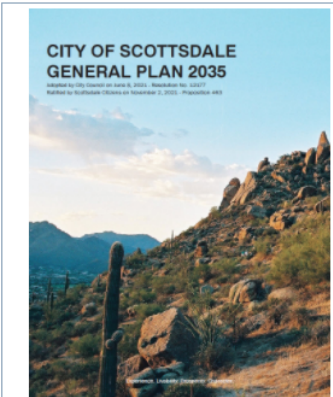
The General Plan (Scottsdale General Plan 2035) was adopted by City Council on June 8, 2021 and ratified by the Scottsdale voters in November 2021, per state statute requirements.

SCOTTSDALE GENERAL PLAN 2035

The General Plan varies from the structure outlined in state law. Some of the state mandated elements have been combined and some have been expanded beyond what is required by the state. The Scottsdale General Plan also includes seven community created elements: Character & Design, Arts, Culture & Creative Community, Healthy Community, Tourism, Education, Economic Vitality, and Community Involvement. As such, City of Scottsdale General Plan 2035 is divided into twenty-four elements which contain the city's goals and policies on each of the various subjects covered within the plan.

General Plan goals and policies are implemented through ordinances, regulations, ongoing procedures,

recommendations from City boards and commissions, and decisions made by the City Council. The General Plan is carried out by private and public agencies and the community.



Download
"General Plan 2035"
PDF File

Contact Information

City of Scottsdale - General Plan

P: [480-312-3111](tel:480-312-3111)

Email: generalplan@scottsdaleaz.gov

Erin Perreault, AICP

Long Range Planning Director

P: [480-312-7093](tel:480-312-7093)

Email: eperreault@ScottsdaleAZ.gov

Adam Yaron

Principal Planner

P: [480-312-2761](tel:480-312-2761)

Email: ayaron@ScottsdaleAZ.gov

Taylor Reynolds

Project Coordination Liaison

P: [480-312-7924](tel:480-312-7924)

Email: treynolds@ScottsdaleAZ.gov

Additional Information

[General Plan Amendments](#)

[General Plan 2035 Executive Summary](#)

[General Plan Resources](#)

[Long Range Planning](#)

Keyword "General Plan"



**Scottsdale General Plan 2035:
Environmental Sustainability**
Scottsdale Environmental Advisory Commission
May 5, 2022

