



**Community & Economic Development Division
Planning and Development Services**

7447 East Indian School Road, Suite 105
Scottsdale, Arizona 85251

To: Historic Preservation Commission
From: Ben Moriarity, Senior Planner
Through: Adam Yaron, Commission Liaison
CC: Erin Perreault, AICP, Planning, Economic Development, & Tourism Executive Director
Date: February 1, 2024
Re: Item 6: Scottsdale's register of historic and cultural resources

The purpose of this item is to inform the Commission on recent changes to the Scottsdale Historic Register. No action is required, the Commission may discuss the register as an information/non-action item.

Within the Historic Preservation Commission's purpose, powers, and duties the Commission is to maintain Scottsdale's register of historic and cultural resources. The Scottsdale Historic Register has been a static list of historic buildings and districts within Scottsdale since its inception. The register includes properties designated as Historic by the Historic Preservation Commission and City Council along with their address, construction year, when it was placed on the register, and architect associated with the building. While adding the recently designated City Hall building to the register staff has taken the opportunity to revamp the function and appearance of Scottsdale's register of historic and cultural resources.

The updated register is designed to be presentable when printed, but also have greater function digitally. The Historic Significance reports and Historic Preservation Plan Design Guidelines for the historic properties have been linked along with the property locations linked to a map from the register for ease of navigation.

ATTACHMENTS

1. Scottsdale Historic Register 2022
2. Revised Scottsdale Historic Register 2024

SCOTTSDALE HISTORIC REGISTER

Properties, structures or districts are listed below in order of the date when the Scottsdale City Council placed the resource on the Scottsdale Historic Register and by the historic name of the use, structure, district or property. This official Scottsdale Historic Register was updated September 2022.

Scottsdale Grammar School No. 1 (Little Red School House)

7333 East Scottsdale Mall

Date Placed on Register: May 23, 2000 by Resolution No. 5550

Date of Construction: 1909

National Register Listing: June 1994

Cavalliere's Blacksmith Shop

3805 North Brown Avenue

Date Placed on Register: May 23, 2000 by Resolution No. 5550

Date of Construction: 1920

Farmer's State Bank of Scottsdale (Rusty Spur)

7245 East Main Street

Date Placed on Register: May 23, 2000 by Resolution No. 5550

Date of Construction: 1921

First U. S. Post Office Building (Porter's)

3944 North Brown Avenue

Date Placed on Register: May 23, 2000 by Resolution No. 5550

Date of Construction: 1929

Scottsdale Grammar School No. 2 (Loloma School)

3720 North Marshall Way

Date Placed on Register: May 23, 2000 by Resolution No. 5550

Date of Construction: 1928

Johnny Rose's Pool Hall (Mexican Imports)

3933 North Brown Avenue

Date Placed on Register: Oct. 3, 2000 by Ordinance No. 3341, 22-ZN-2000

Date of Construction: 1923

Our Lady of Perpetual Help Mission Church

3821 North Brown Avenue

Date Placed on Register: April 3, 2001 by Ordinance No. 3374, 1-ZN-2001

Date of Construction: 1933

Architect: Robert Evans

National Register Listing: September 2018

Titus House

1319 North Hayden Road

Date Placed on Register: May 1, 2001 by Resolution No. 5776

Date of Construction: 1892

Architect: James Creighton

National Register Listing: May 1982

Cattle Track Complex

6105-6207 North Cattle Track

Date Placed on Register: May 1, 2001 by Resolution No. 5776

Dates of Construction: Multiple. George L. Ellis House at 105 North Cattle Track - 1937, expansion in 1940's, plus four workshop-studios, including 1930s barn converted into Phil Curtis studio/residence in 1940s, three residential-studios and one pump house of varying vintage. Kueffner Residence at 6207 North Cattle Track - 1938, plus two workshop/studios.

Architect: George Ellis for majority of complex

National Register Listing: September 1999

Saba's Department Store

7254 East Main Street

Date Placed on Register: May 1, 2001 by Resolution No. 5776

Dates of Construction: 1921 (Sterling Drug Store), historic alteration in 1948

Hotel Valley Ho

6850 East Main Street

Date Placed on Register: July 1, 2002 by Ordinance No. 3453, 7-ZN-2002

Dates of Construction: 1956 Valley Ho, two 1958 additional wings to north

Architect: Edward L. Varney Assoc.

Craftsman Court

7121-7141 East 5th Avenue

Date Placed on Register: July 1, 2002 by Ordinance No. 3454, 8-ZN-2002

Dates of Construction: seven building complex began in 1955,

Architect: T.S. Montgomery

National Register Listing: July 2018

Adobe Apartments

7037-7041 East 1st Avenue

Date Placed on Register: July 1, 2002 by Ordinance No. 3455, 9-ZN-2002

Date of Construction: 1949, residential addition in 2002

Pink Pony Restaurant

3831 North Scottsdale Road

Date Placed on Register: May 4, 2004 by Ordinance No. 3562, 19-ZN-2003

Dates of Construction: 1954 (Sprouse-Reitz Drugstore), historic alteration in 1970

Sugar Bowl Restaurant

3935 and 4005 North Scottsdale Road

Date Placed on Register: May 4, 2004 by Ordinance No. 3563, 20-ZN-2003

Dates of Construction: 1950 (Western Motor Service), historic alteration in 1958

Town and Country Scottsdale Historic District

Southwest corner of Oak Street and 74th Street

Location: Between Oak St. and Monte Vista Rd, and between 72nd Place and 74th Street

62 single-family homes on approximately 12 acres

Date Placed on Register: June 7, 2005 by Ordinance No. 3619, 24-ZN-2004

Dates: Subdivided in 1958; homes for sale in 1959

Builder: Fred E. "Woody" Woodworth,

Architect: Ralph Haver

National Register Listing: September 2009

Village Grove 1-6 Historic District

Southwest corner of Oak Street and 68th Street

Location: Between Oak Street and Almeria Road and between 66th Place and 69th Street
255 single-family homes on approximately 72 acres

Date Placed on Register: June 7, 2005 by Ordinance No. 3620, 25-ZN-2004

Dates: Six subdivision plats in 1957

Builder: Allied Construction Company

National Register Listing: May 2010

Taliesin West

12621 North Frank Lloyd Boulevard

Located on 10.6 acres, north of the CAP Canal at the base of the McDowell Mountains

Date Placed on Register: April 4, 2006 by Ordinance No. 3667, 21-ZN-2005

Dates of Construction: 1937-1959

Architect: Frank Lloyd Wright (Additions/Alterations after Mr. Wright's death in 1959 by Taliesin Fellowship and Apprentices of Frank Lloyd Wright)

National Register Listing: February 1974; National Historic Landmark: May 1982;

UNESCO World Heritage Site: July 2019

Kerr Cultural Center

6110 North Scottsdale Road

Location: approximately ½ acre off Rose Lane

Date Placed on Register: June 17, 2008 by Resolution 7615 for a Conservation Easement

Dates of Construction: Louise Lincoln Kerr Residence 1948; Studio 1959 with 1969 and later additions/alterations to the north and west

National Register Listing: April 2010

Road Amundsen Pullman Car

7301 East Indian Bend Road

Location: .07 acres within City of Scottsdale's McCormick-Stillman Railroad Park

Date Placed on Register: July 1, 2009 by Ordinance No. 3861, 3-ZN-2009

Date of Construction: Built in 1928, moved to city-owned park in 1974

Builder: George Pullman, Pullman Car Company

National Register Listing: September 2009

Charles Miller House

6938 East 1st Street

Location: .06 acres within Charles Miller Square on Northwest corner of Goldwater Boulevard and 1st Street

Date Placed on Register: February 16, 2010 by Ordinance No. 3886, 11-ZN-2009

Date of Construction: About 1913, moved in 1955 and 2001 to prevent demolition

Designer/Builder: Wood-frame Craftsman Bungalow probably built by Charles Miller, owner, from a pre-fabricated kit or from a set of working drawings available at the time

Villa Monterey Units 1-7 Historic District

East and West of Miller Road, North and South of Chaparral Road and Miller Road

Location: 758 homes and 13 common tracts on approximately 115 acres with 7 Homeowners Associations (HOAs). Unit 1 is West of Miller Road; Units 2, 3, 4 and 5 are East of Miller Road and South of Chaparral Road; and Units 6 and 7 are West of Miller Road and North of Chaparral Road

Date Placed on Register: June 7, 2011 by Ordinance No. 3944, 13-ZN-2010

Dates of Construction: 1961-1969

Architect: Ralph Haver and Associates

Builder: Butler Homes, David Friedman, President

Glass and Garden Community Church (The Garden Church)

8620 East McDonald Drive

Location: 4.55 acres on the NEC of McDonald & 86th

Date Placed on Register: June 18, 2013 by Ordinance No. 4090,
14-ZN-2012

Date of Construction: 1966

Architect: E. Logan Campbell

Engineer: John K. Parsons

Holy Cross Lutheran Church

3110 North Hayden Road

Location: Northwest of Hayden Road and Thomas Road on 1.97 acres

Date Placed on Register: June 18, 2013 by Ordinance No. 4091, 15-ZN-2012

Date of Construction: 1961; 1964 education buildings addition

Architect: William D. Knight, Jr.

First Church of Christ, Scientist (Christian Scientist Church)

6427 East Indian School Road

Location: 1.8 acres on south side of Indian School Road, south of Arizona Canal

Date Placed on Register: June 18, 2013 by Ordinance No. 4089, 5-ZN-2013

Date of Construction: 1962; 1971 addition

Architect: T. S. Montgomery

Sands North Townhouses Historic District

7322 East Joshua Tree Lane

Location: east side of North Scottsdale Road approximately 660 feet south of the
intersection of East Indian Bend Road and North Scottsdale Road

Date Placed on Register: October 1, 2019 by Ordinance No. 4426, 9-ZN-2019

Date of Construction: 1972

Builder: Emron Thomas (E.T.) Wright

National Register Listing: September 2022

Kimsey Building

7120 E Indian School Road

Location: north side of East Indian School Road approximately 400 feet west of the
intersection of East Indian School Road and North Scottsdale Road

Date Placed on Register: April 6, 2021 by Ordinance No. 4491, 10-ZN-2020

Date of Construction: 1963

Architect: Ralph Haver

Historic resources (properties, structures, and districts) are listed chronologically by when they were placed on the Scottsdale Historic Register. [Links](#) to Historic Significance Assessments and Design Guidelines are provided. This official Scottsdale Historic Register was last reviewed and updated August 2023.



Scottsdale Grammar School No. 1 (Little Red School House)

7333 East Scottsdale Mall

Construction: 1909

Placed on Register: May 23, 2000 by Resolution No. 5550

National Register Listing: June 1994

[Historic Significance Assessment](#) | [Design Guidelines](#) | [Map](#)



Cavalliere's Blacksmith Shop

3805 North Brown Avenue

Construction: 1920

Placed on Register: May 23, 2000 by Resolution No. 5550

[Historic Significance Assessment](#) | [Design Guidelines](#) | [Map](#)



Farmer's State Bank of Scottsdale (Rusty Spur)

7245 East Main Street

Construction: 1921

Placed on Register: May 23, 2000 by Resolution No. 5550

[Historic Significance Assessment](#) | [Design Guidelines](#) | [Map](#)



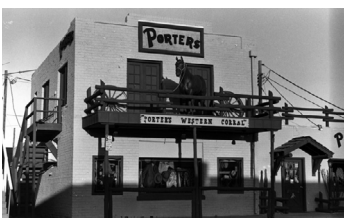
Johnny Rose's Pool Hall (Mexican Imports)

3933 North Brown Avenue

Construction: 1923

Placed on Register: October 3, 2000 by Ordinance No. 3341, 22-ZN-2000

[Historic Significance Assessment](#) | [Design Guidelines](#) | [Map](#)



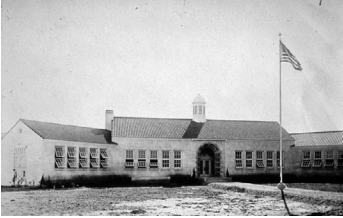
First U. S. Post Office Building (Porter's)

3944 North Brown Avenue

Construction: 1929

Placed on Register: May 23, 2000 by Resolution No. 5550

[Historic Significance Assessment](#) | [Design Guidelines](#) | [Map](#)



Scottsdale Grammar School No. 2 (Loloma School)

3720 North Marshall Way

Construction: 1928

Placed on Register: May 23, 2000 by Resolution No. 5550

[Historic Significance Assessment](#) | [Design Guidelines](#) | [Map](#)



Our Lady of Perpetual Help Mission Church

3821 North Brown Avenue

Construction: 1933 - Architect: Robert Evans

Placed on Register: April 3, 2001 by Ordinance No. 3374, 1-ZN-2001

National Register Listing: September 2018

[Historic Significance Assessment](#) | [Design Guidelines](#) | [Map](#)



Titus House

1310 North Hayden Road

Construction: 1892 - Architect: James Creighton

Placed on Register: May 1, 2001 by Resolution No. 5776

National Register Listing: May 1982

[Historic Significance Assessment](#) | [Design Guidelines](#) | [Map](#)



Saba's Department Store

7254 East Main Street

Construction: 1921 (Sterling Drug Store)

Placed on Register: May 1, 2001 by Resolution No. 5776

[Historic Significance Assessment](#) | [Design Guidelines](#) | [Map](#)



Cattle Track Complex

6105 - 6207 North Cattle Track

Construction: Multiple, 1930s - 1940s - Architect: George Ellis

Placed on Register: May 1, 2001 by Resolution No. 5776

National Register Listing: September 1999

[Historic Significance Assessment](#) | [Design Guidelines](#) | [Map](#)



Hotel Valley Ho

6850 East Main Street

Construction: 1956 - Architect: Edward L. Varney Assoc.

Placed on Register: July 1, 2002 by Ordinance No. 3453, 7-ZN-2002

[Historic Significance Assessment](#) | [Design Guidelines](#) | [Map](#)



Adobe Apartments

7037-7041 East 1st Avenue

Construction: 1949, residential addition in 2002

Placed on Register: July 1, 2002 by Ordinance No. 3455, 9-ZN-2002

[Historic Significance Assessment](#) | [Design Guidelines](#) | [Map](#)



Craftsman Court

7121-7141 East 5th Avenue

Construction: 1955 - Architect: T.S. Montgomery

Placed on Register: July 1, 2002 by Ordinance No. 3454, 8-ZN-2002

National Register Listing: July 2022

[Historic Significance Assessment](#) | [Design Guidelines](#) | [Map](#)



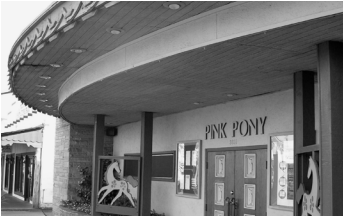
Sugar Bowl Restaurant

3935 and 4005 North Scottsdale Road

Construction: 1950 (Western Motor Service)

Placed on Register: May 4, 2004 by Ordinance No. 3563, 20-ZN-2003

[Historic Significance Assessment](#) | [Design Guidelines](#) | [Map](#)



Pink Pony Restaurant

3831 North Scottsdale Road

Construction: 1954 (Sprouse-Reitz Drugstore)

Placed on Register: May 4, 2004 by Ordinance No. 3562, 19-ZN-2003

[Historic Significance Assessment](#) | [Design Guidelines](#) | [Map](#)



Town and Country Scottsdale Historic District

Southwest corner of Oak Street and 74th Street

Between Oak St. and Monte Vista Rd, 72nd Place and 74th Street

62 single-family homes on approximately 12 acres

Construction: 1958 - 1960

Builder: Fred E. "Woody" Woodworth - Architect: Ralph Haver

Placed on Register: June 7, 2005 by Ordinance No. 3619, 24-ZN-2004

National Register Listing: September 2009

[Historic Significance Assessment](#) | [Design Guidelines](#) | [Map](#)



Village Grove 1-6 Historic District

Southwest corner of Oak Street and 68th Street
Between Oak Street and Almeria Road, 66th Place and 69th Street
255 single-family homes on approximately 72 acres

Construction: 1957 - 1959 - Builder: Allied Construction Company
Placed on Register: June 7, 2005 by Ordinance No. 3620, 25-ZN-2004
National Register Listing: May 2010

[Historic Significance Assessment](#) | [Design Guidelines](#) | [Map](#)



Taliesin West

12621 North Frank Lloyd Boulevard

Construction: 1937 - 1959 - Architect: Frank Lloyd Wright

Placed on Register: April 4, 2006 by Ordinance No. 3667, 21-ZN-2005
National Register Listing: February 1974
National Historic Landmark: May 1982
UNESCO World Heritage Site: July 2019

[Historic Significance Assessment](#) | [Design Guidelines](#) | [Map](#)



Kerr Cultural Center

6110 North Scottsdale Road

Construction: 1948-1959, Louise Lincoln Kerr Residence

Placed on Register: June 17, 2008 by Resolution 7615

National Register Listing: April 2010

[Historic Significance Assessment](#) | [Design Guidelines](#) | [Map](#)



Road Amundsen Pullman Car

7301 East Indian Bend Road

Construction: 1928, moved to city-owned park in 1974

Builder: George Pullman, Pullman Car Company

Placed on Register: July 1, 2009 by Ordinance No. 3861, 3-ZN-2009
National Register Listing: September 2009

[Historic Significance Assessment](#) | [Map](#)



Charles Miller House

6938 East 1st Street

Construction: 1913, moved in 1955 and 2001 to prevent demolition

Designer/Builder: Likely Charles Miller

Placed on Register: February 16, 2010 by Ordinance No. 3886, 11-ZN-2009

[Historic Significance Assessment](#) | [Map](#)



Villa Monterey Units 1-7 Historic District

East & West of Miller Road, North & South of Chaparral Road
758 homes and 13 common tracts on approximately 115 acres

**Construction: 1961-1969 - Architect: Ralph Haver and Associates
Builder: Butler Homes**

Placed on Register: June 7, 2011 by Ordinance No. 3944, 13-ZN-2010
[Historic Significance Assessment](#) | [Design Guidelines](#) | [Map](#)



Glass and Garden Community Church (The Garden Church)

8620 East McDonald Drive

Construction: 1966 - Architect: E. Logan Campbell

Placed on Register: June 18, 2013 by Ordinance No. 4090, 14-ZN-2012
[Historic Significance Assessment](#) | [Map](#)



Holy Cross Lutheran Church

3110 North Hayden Road

Construction: 1961 - 1964 - Architect: William D. Knight, Jr.

Placed on Register: June 18, 2013 by Ordinance No. 4091, 15-ZN-2012
[Historic Significance Assessment](#) | [Map](#)



First Church of Christ, Scientist (Christian Scientist Church)

6427 East Indian School Road

Construction: 1962 - 1971 - Architect: T. S. Montgomery

Placed on Register: June 18, 2013 by Ordinance No. 4089, 5-ZN-2013
[Historic Significance Assessment](#) | [Map](#)



Sands North Townhouses Historic District

7233 East Joshua Tree Lane

Construction: 1972 - Builder: Emron Thomas (E.T.) Wright

Placed on Register: October 1, 2019 by Ordinance No. 4426, 9-ZN-2019
National Register Listing: September 2022

[Historic Significance Assessment + Design Guidelines](#) | [Map](#)



Kimsey Building

7120 E Indian School Road

Construction: 1963 - Architect: Ralph Haver

Placed on Register: April 6, 2021 by Ordinance No. 4491, 10-ZN-2020
[Historic Significance Assessment + Design Guidelines](#) | [Map](#)



City Hall

3939 North Drinkwater Boulevard

Construction: 1968 - Architect: Bennie M. Gonzales

Placed on Register: June 13, 2023 by Ordinance No. 4597, 3-ZN-2023

[Historic Significance Assessment + Design Guidelines](#) | [Map](#)